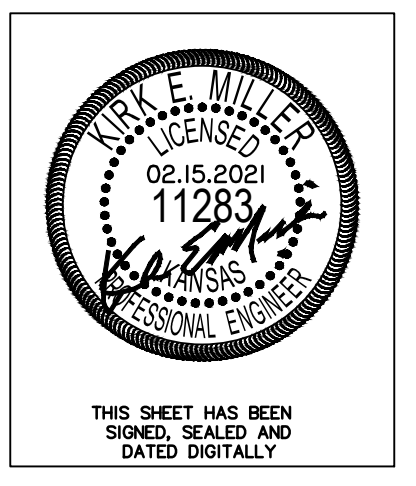


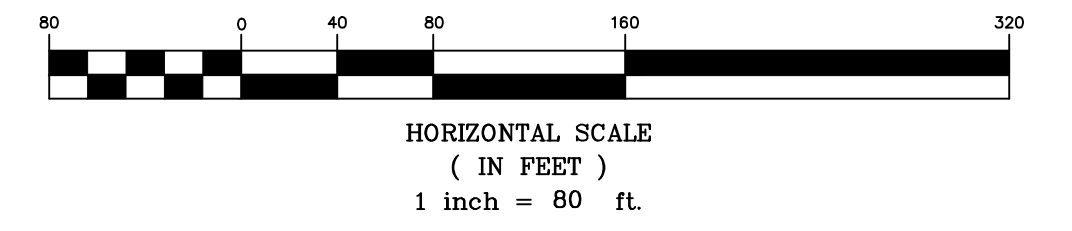
Point #	Northing	Easting	Desc.
1	1656640.78	1638176.43	5/8" Rebar
2	1655443.59	1638172.31	5/8" Rebar
3	1655435.54	1637716.05	5/8" Rebar
4	1655371.55	1637717.12	5/8" Rebar
5	1655368.48	1637533.84	5/8" Rebar
6	1656929.71	1637506.56	5/8" Rebar

Point #	Northing	Easting	Desc.
10	1655388.15	1638015.86	Sta 0+00 Line 1
11	1655456.60	1638016.07	Sta 0+68.46 Line 1
12	1655573.60	1637977.22	Sta 1+90.24 Line 1
13	1655510.55	1637966.39	Sta 2+31.75 Line 1
14	1655451.36	1637702.91	Sta 3+11.71 Line 2
15	1655450.72	1637664.58	Sta 3+53.04 Line 2

Point #	Northing	Easting	Desc.
16	1655448.64	1637540.44	Sta 4+75.70 Line 2
17	1655573.46	1637538.26	Sta 6+00.54 Line 2
18	1655829.42	1637533.79	Sta 8+56.54 Line 2
19	1655691.17	1637698.89	Sta 2+39.84 Line 3
20	1655703.53	1637660.34	Sta 2+83.17 Line 3
21	1655972.10	1637847.38	Sta 0+00 Line 4
22	1655825.93	1637849.83	Sta 1+46.19 Line 4



THIS SHEET HAS BEEN SIGNED, SEALED AND DATED DIGITALLY.



Fox Run Addition (Phase II)
Control Map
Wichita, Kansas

	PROJECT NUMBER			
	KEM NO. 20061	FILE SWS	DATE 09/2020	SHEET 2.0
DESIGN ME	DRAWN ZS	REVISED 02/15/2021		