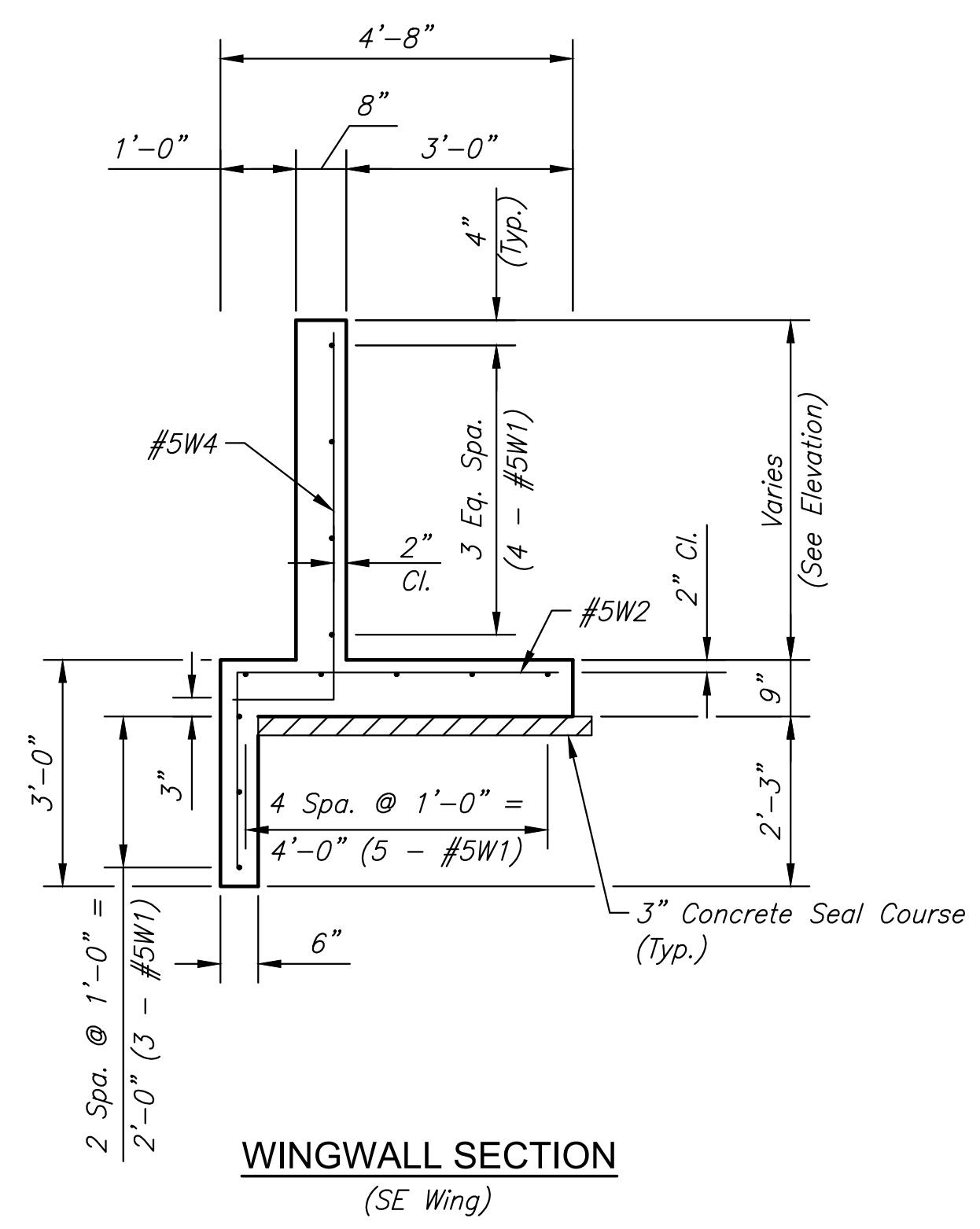
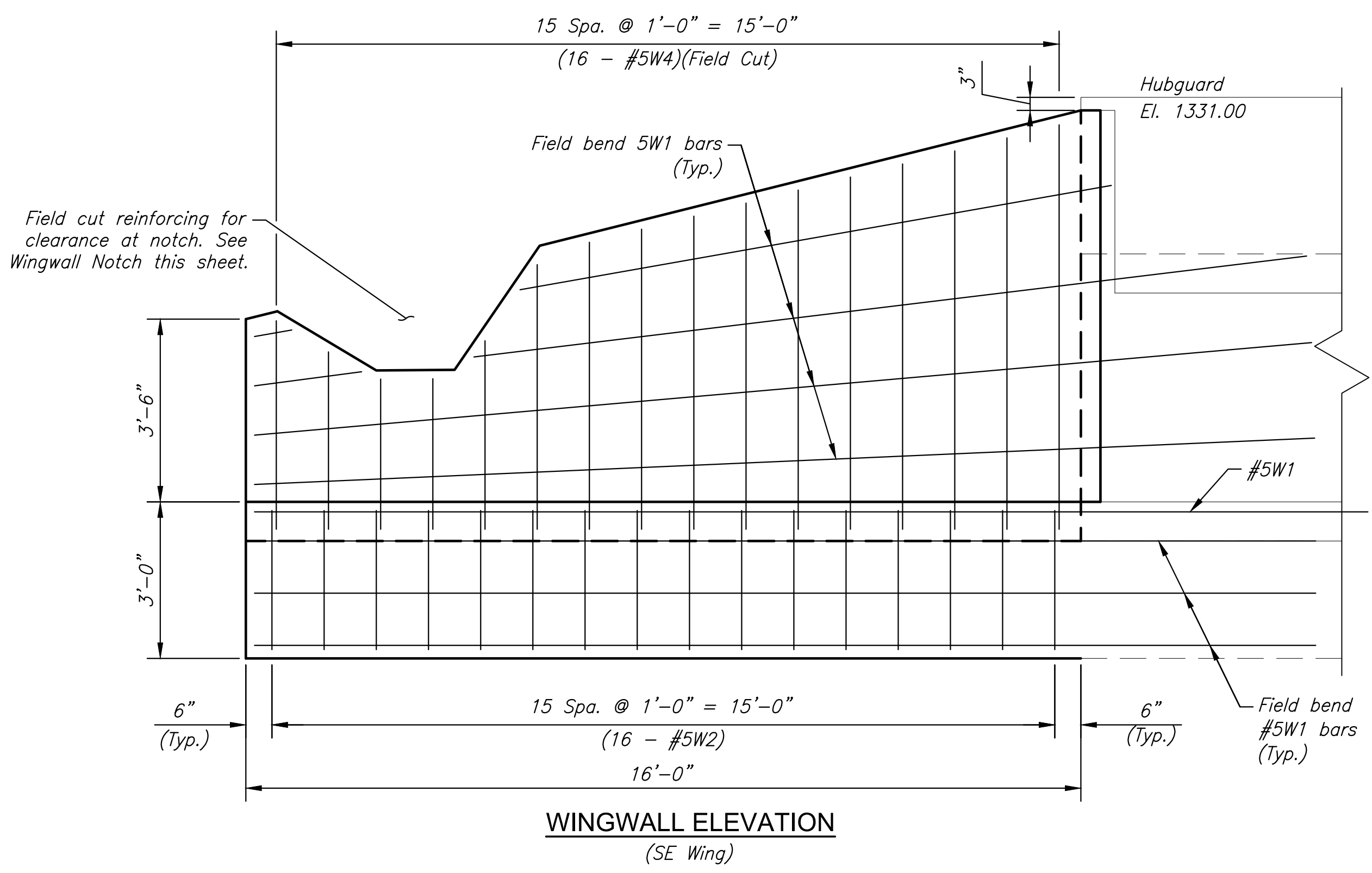


J:\PROJECTS\2019\1901010483_COW_RCB_TYLER AND HARRY_190483 CAD\SHOTS\06 CIVIL\BRIDGE\190483-05-2522.DWG
 PLOTTED: Thursday, February 11, 2021 @ 03:03PM

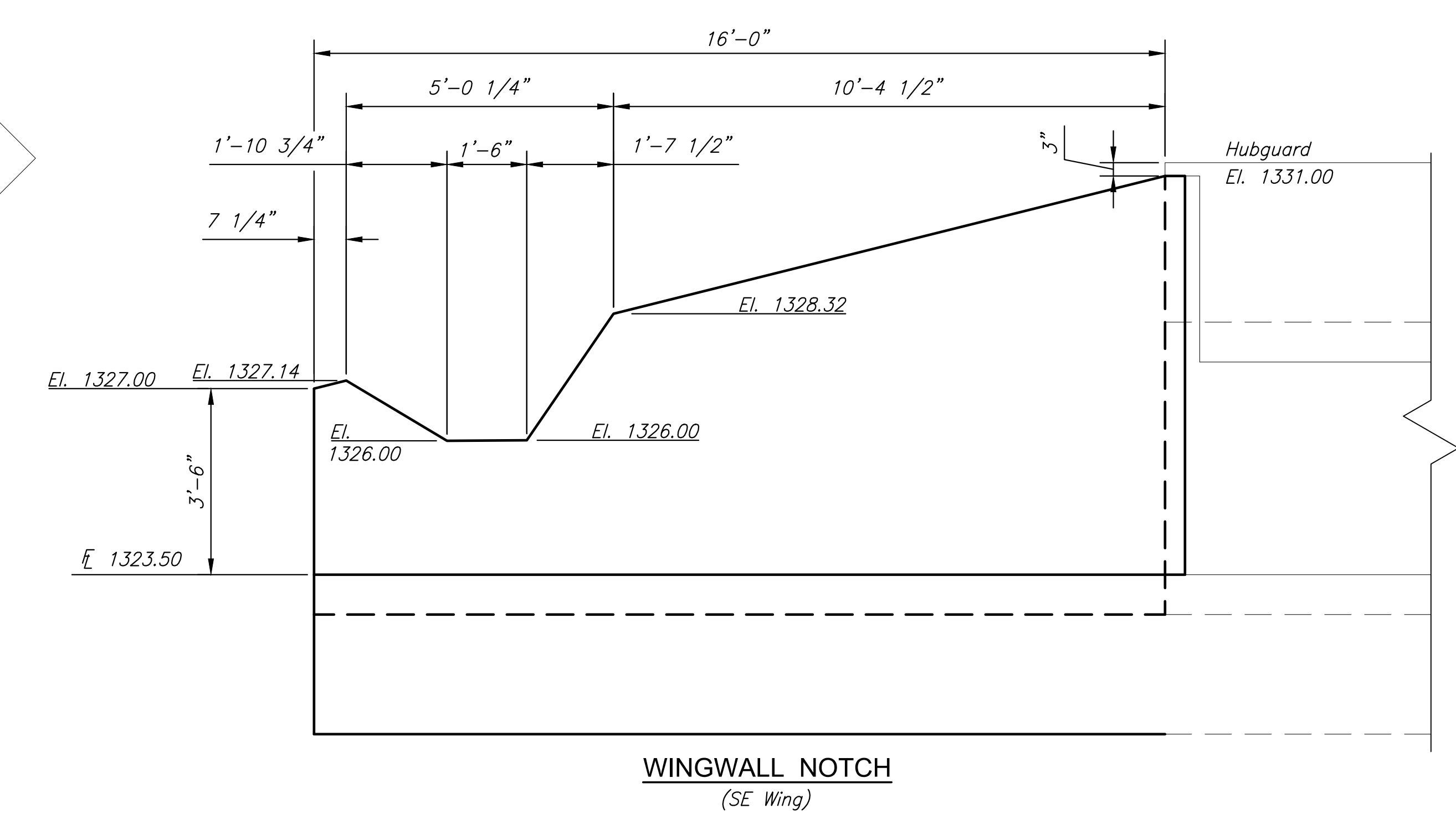
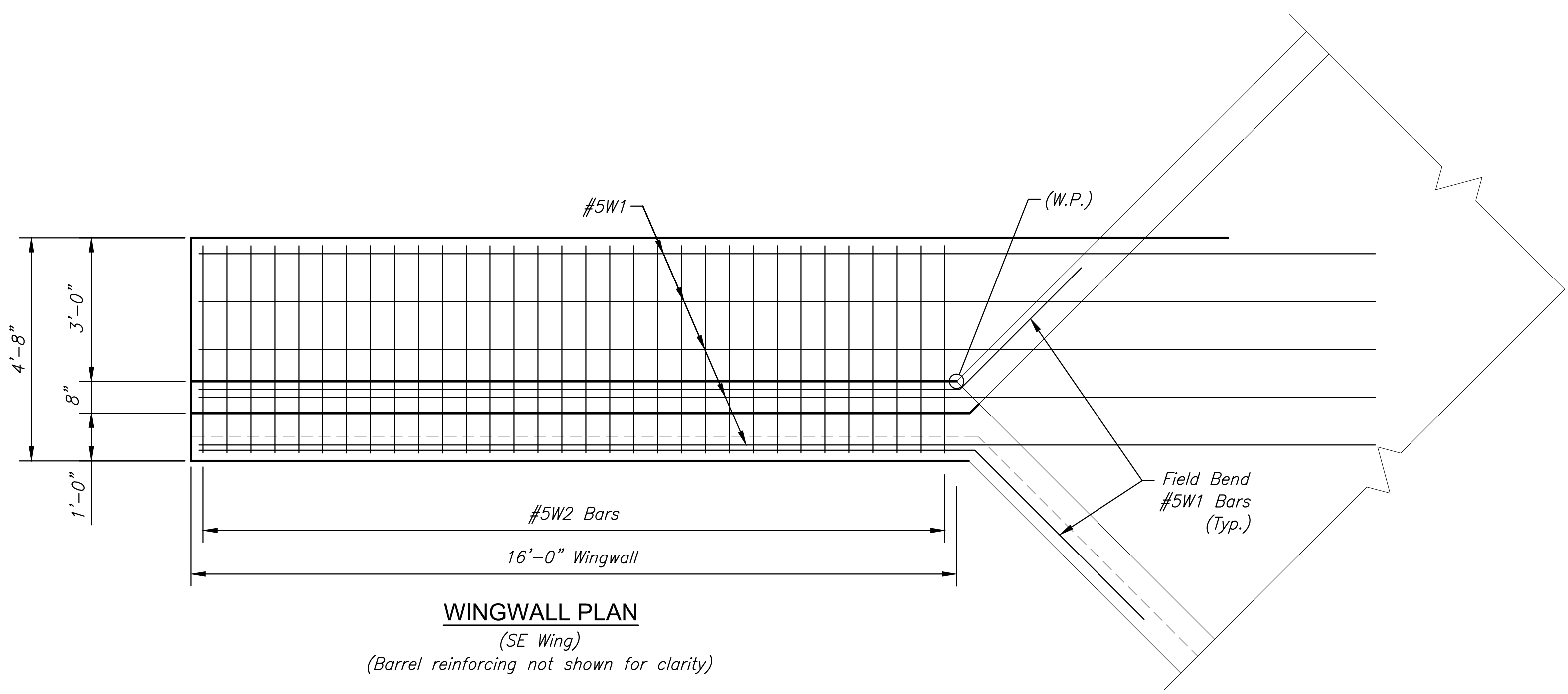
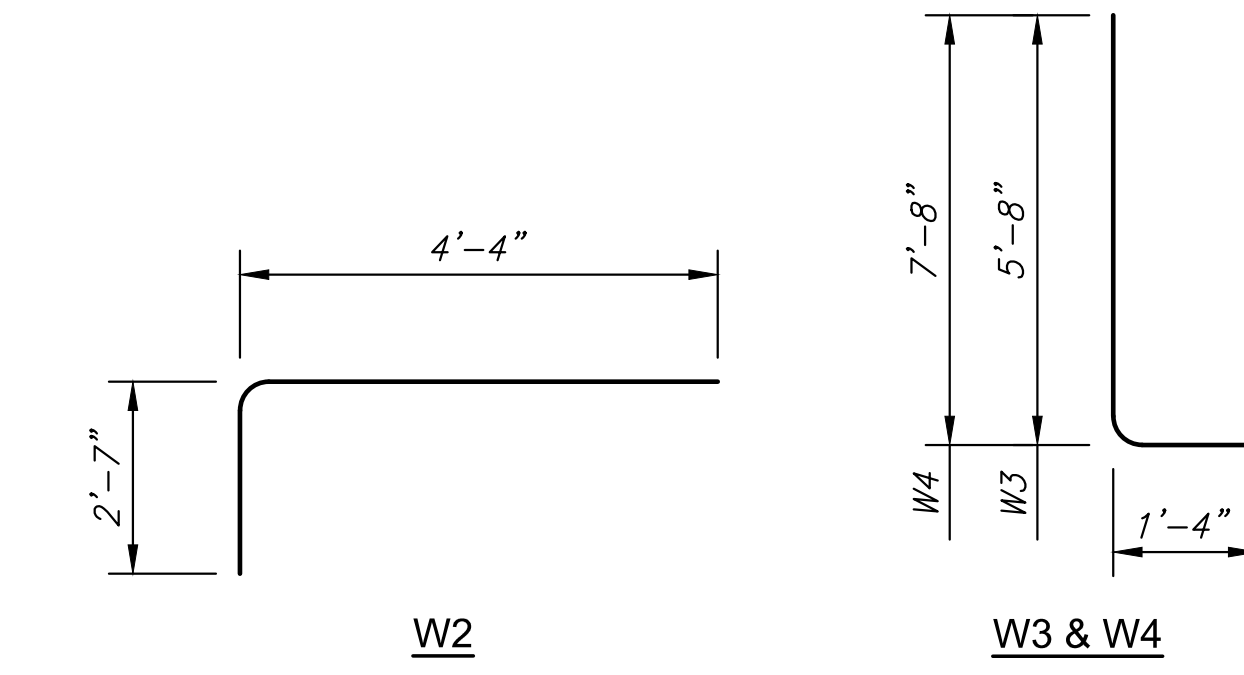


FOR INFORMATION ONLY

SUMMARY OF QUANTITIES (All Wings & Aprons)	
Concrete (Grade 4.0)	34.5 C.Y.
Reinforcing Steel (Gr. 60)	2,050 Lbs.
Concrete for Seal Course	2.9 C.Y.
Welded Wire Fabric (Apron)	590 Lbs.

FOR INFORMATION ONLY

BILL OF REINFORCING STEEL (Grade 60)(All Wings)							
Straight Bars				Bent Bars			
Mark	Size	No.	Length	Mark	Size	No.	Length
W1	#5	48	21'-0"	W2	#5	64	6'-11"
				W3	#5	32	7'-0"
				W4	#5	32	9'-0"



RCB REPLACEMENT-TYLER & HARRY
 PLANS FOR
 CITY OF WICHITA, KANSAS

©2021 MKEC Engineering
 All Rights Reserved
 www.mkec.com
 These drawings and their contents, including, but not limited to, all concepts, designs, & ideas are the exclusive property of MKEC Engineering (MKEC), and may not be used or reproduced in any way without the express consent of MKEC.

S.E. WING DETAILS

PROJECT NO.	1901010483	
DATE	FEB. 2021	
SCALE	N.T.S.	
DESIGNED	DRAWN	CHECKED
KJS	RAM	KJS

NO.	REVISION	DATE

SHEET NO.
13 OF 41