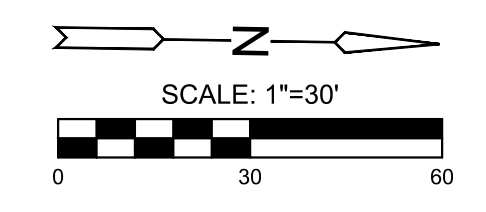
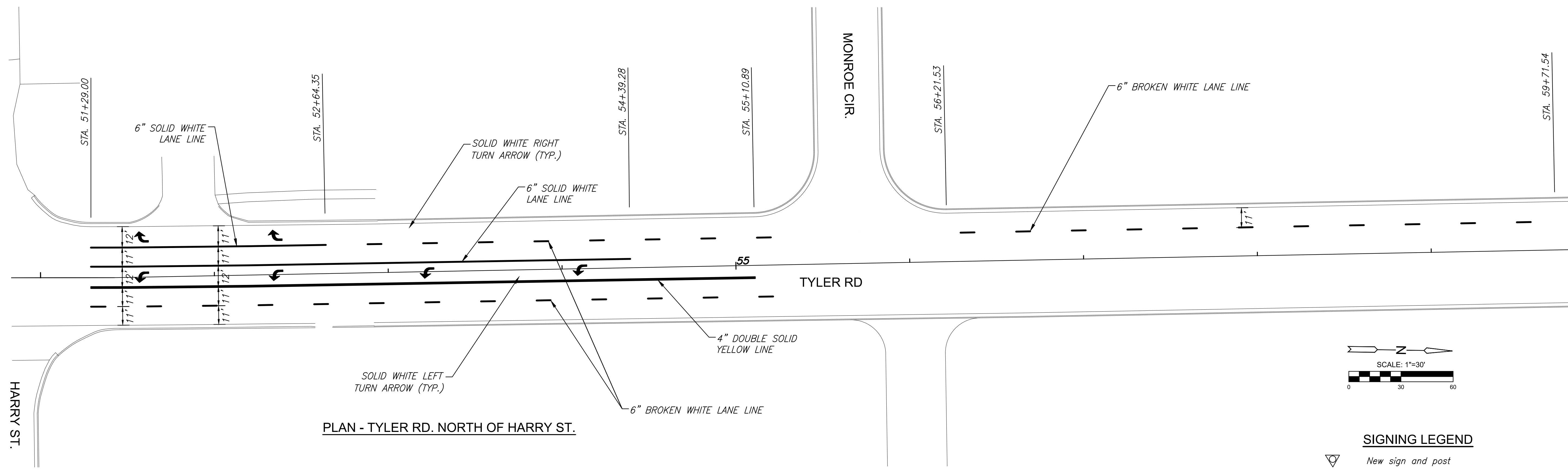
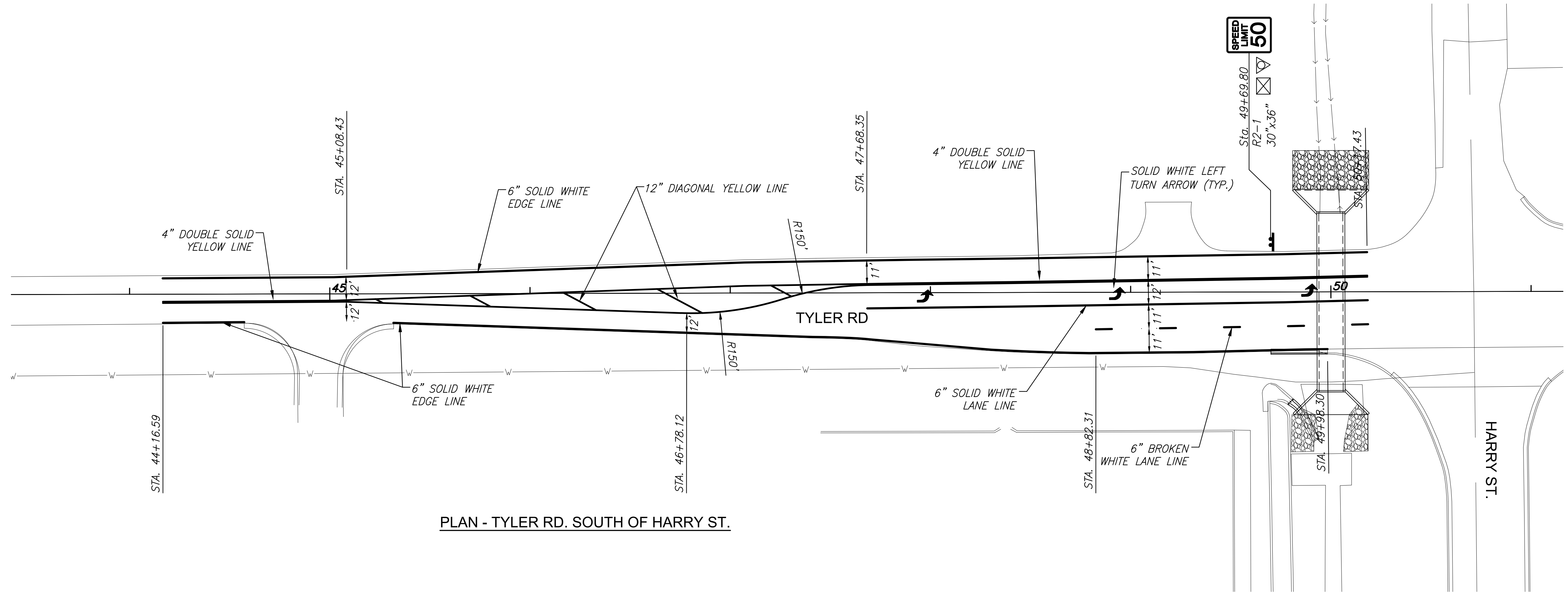


PLOTTED: Thursday, February 11, 2021 @ 03:05PM

J:\PROJECTS\2019\19010483_COW_RCB_TYLER AND HARRY_190483_CADD\SHOTS\06 CIVIL\PAV\190483-06-5600.DWG



- SIGNING LEGEND**
- New sign and post
 - Remove sign, post, & return to owner
 - Sign (2-post)



PLANS FOR
RCB REPLACEMENT-TYLER & HARRY
CITY OF WICHITA, KANSAS

©2021 MKEC Engineering All Rights Reserved www.mkec.com
These drawings and their contents, including, but not limited to, all concepts, designs, & ideas are the exclusive property of MKEC Engineering (MKEC), and may not be used or reproduced in any way without the express consent of MKEC.

PAVEMENT MARKING AND SIGNING PLAN

PROJECT NO.	19010483	
DATE	FEB. 2021	
SCALE	1" = 30'	
DESIGNED	DRAWN	CHECKED
JRA	C-JL	JRA

NO.	REVISION	DATE

SHEET NO.
25 OF 41