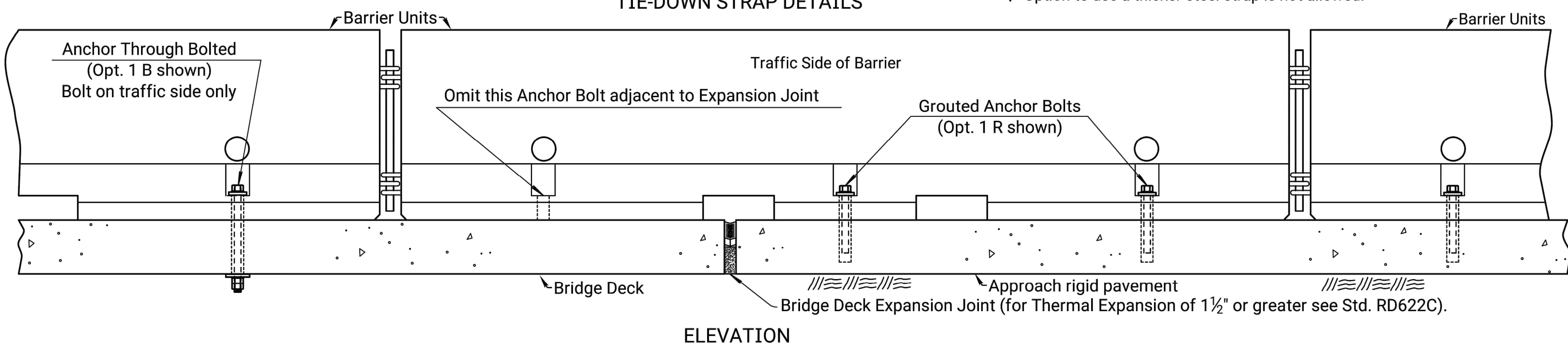
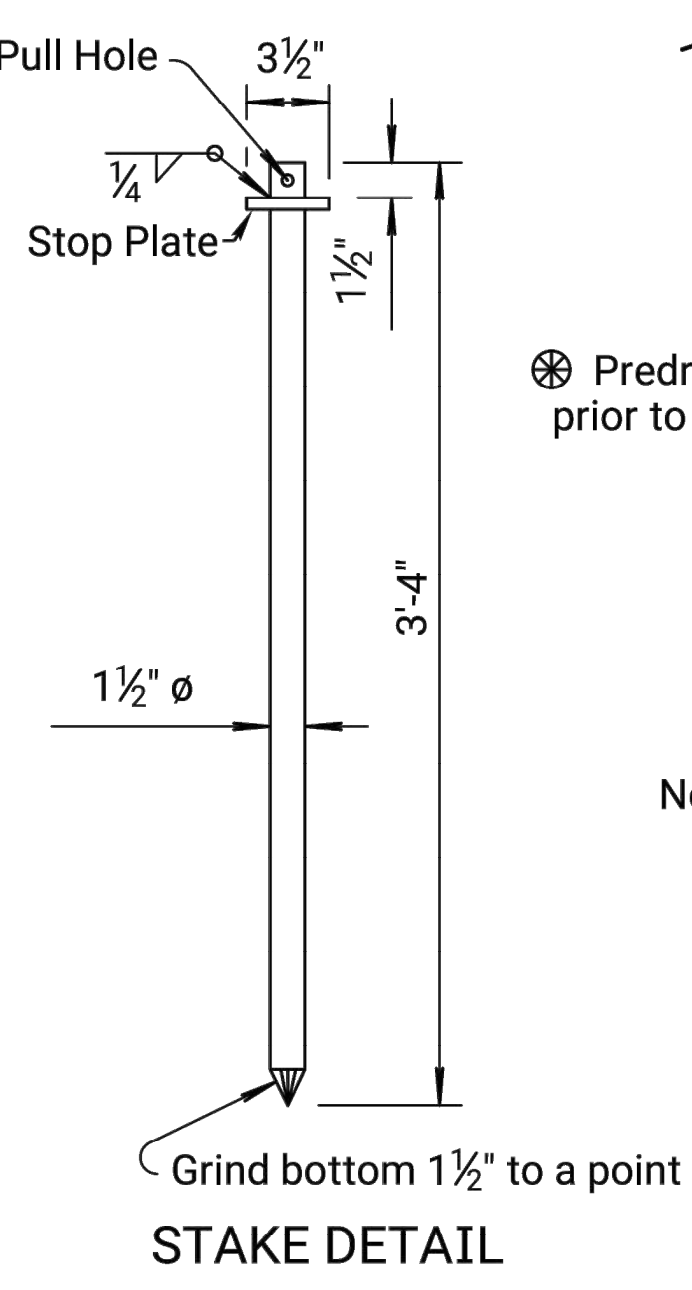
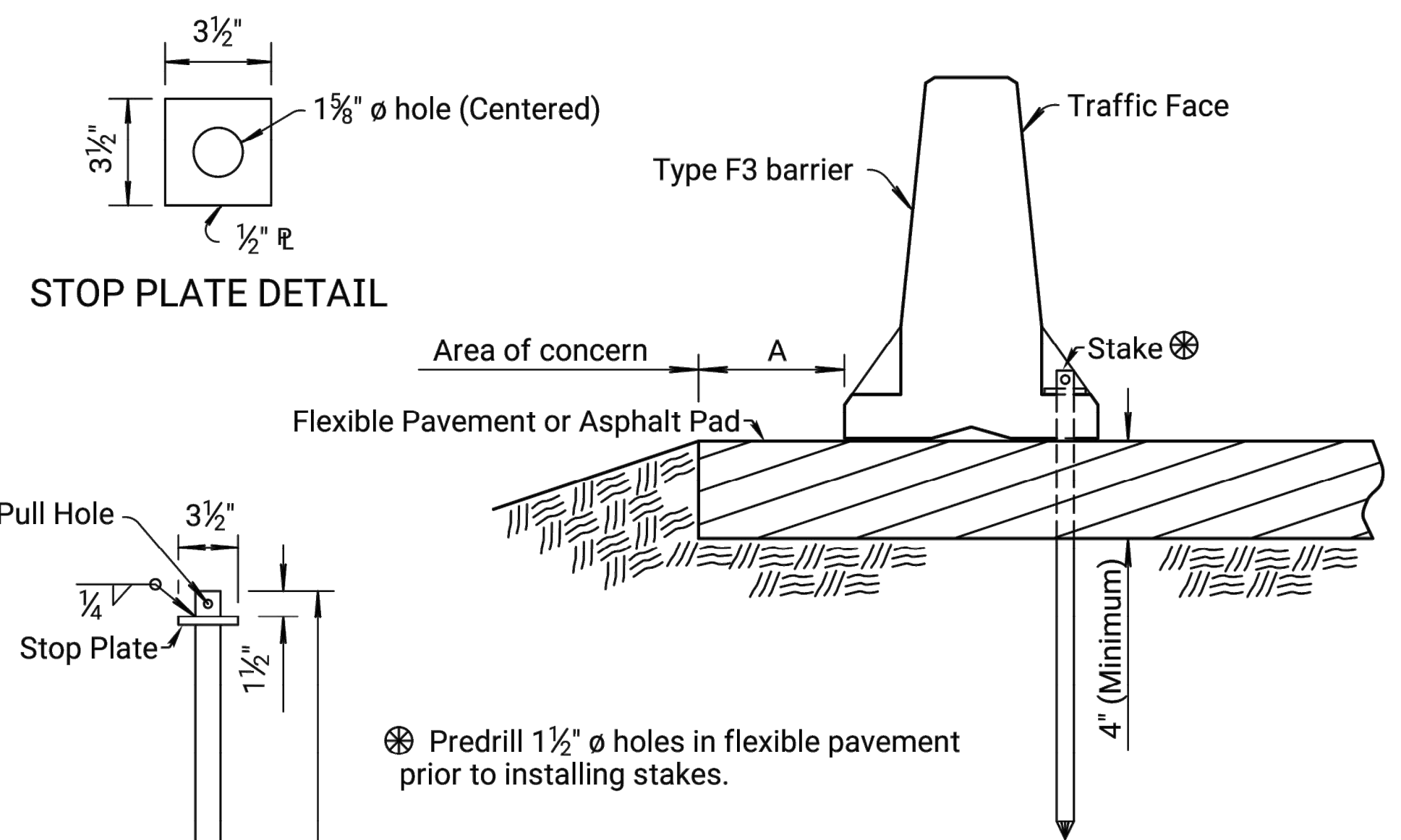
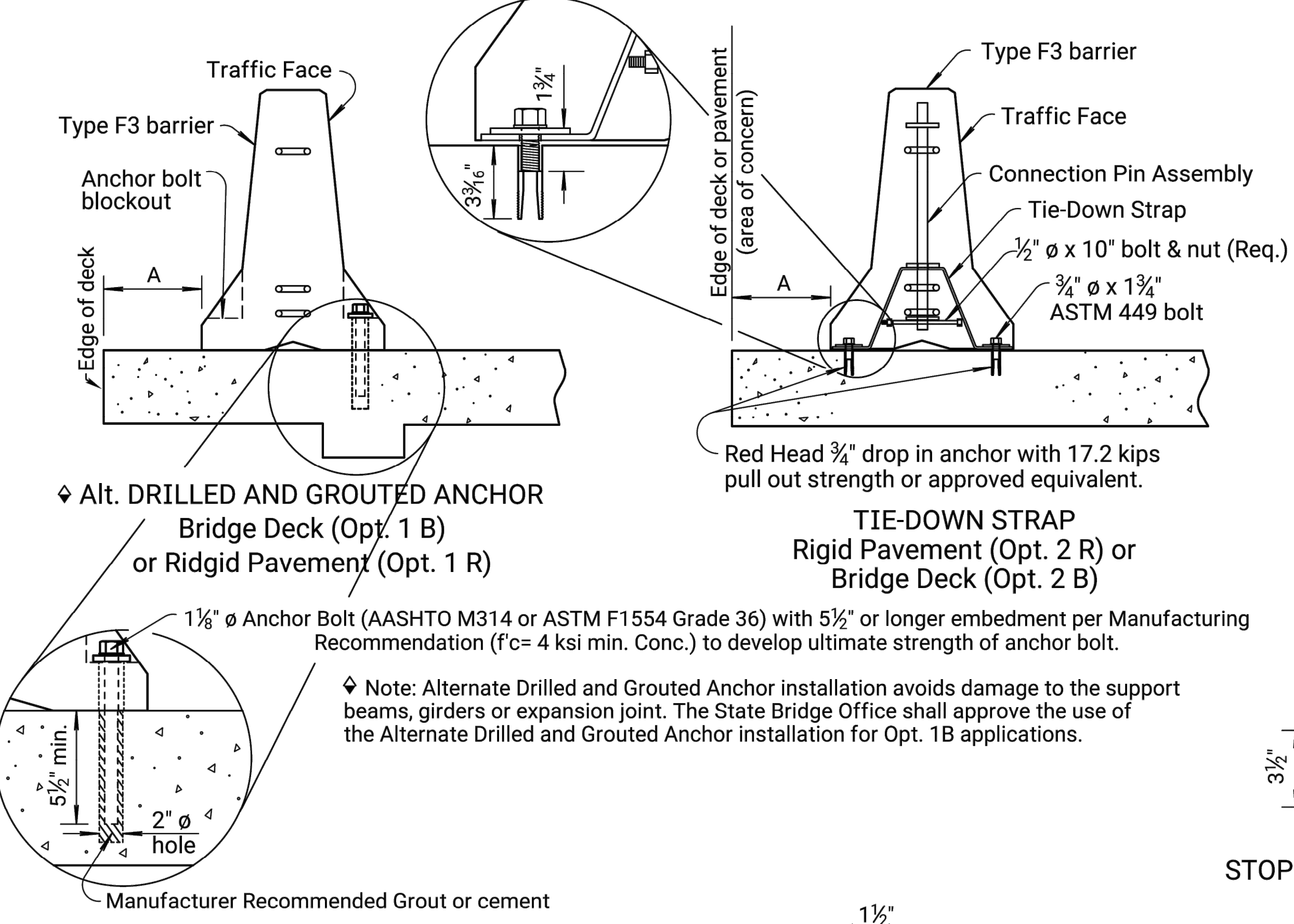
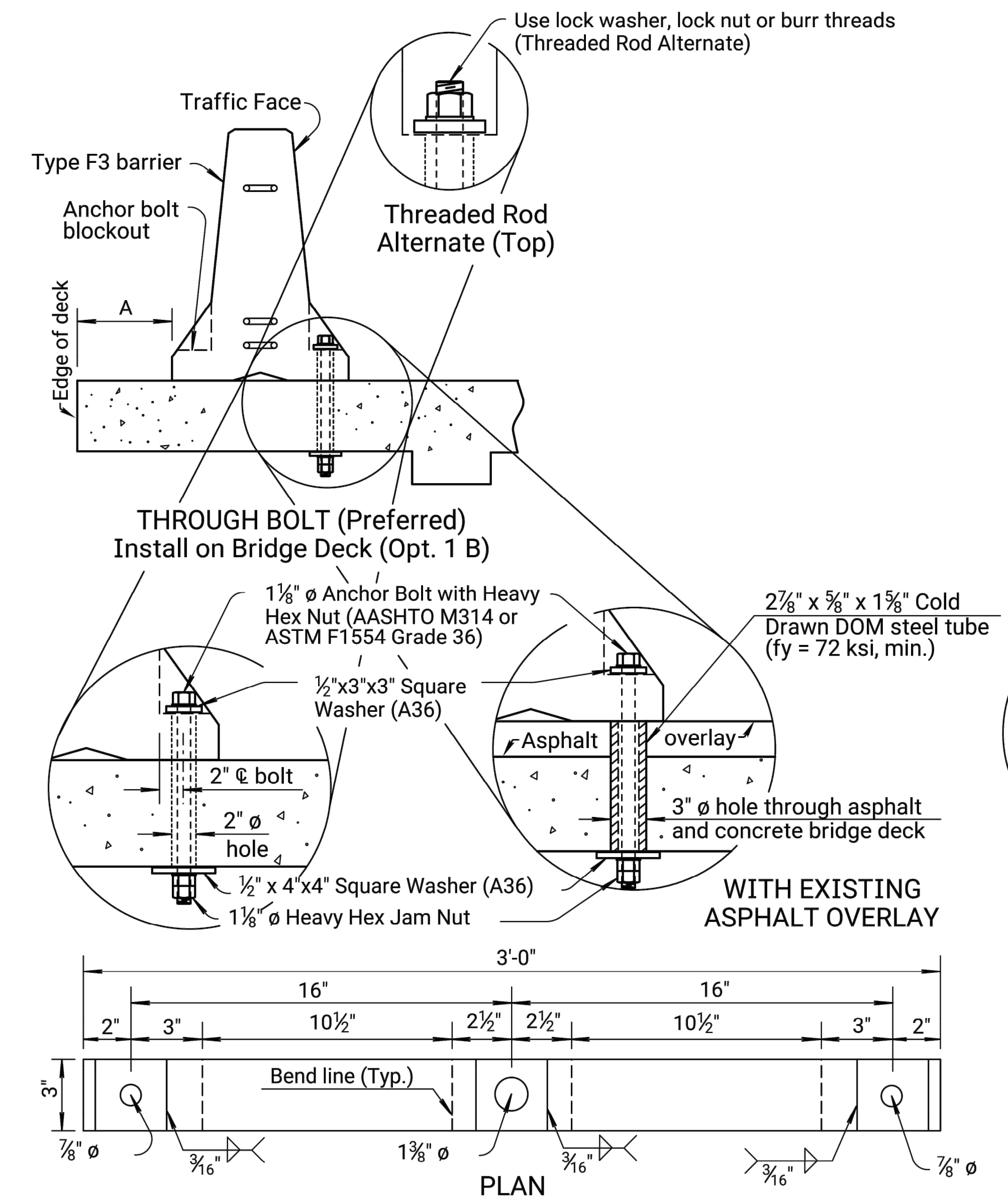


| STATE | PROJECT NO. | YEAR | SHEET NO. | TOTAL SHEETS |
|--------|-------------|------|-----------|--------------|
| KANSAS | | | | |

| Option | BRIDGE DECK APPLICATION | |
|--------|-------------------------|--|
| 1B | $0' \leq A < 2'$ | Anchor each barrier with 3 bolts on traffic face |
| 2B | $\Delta 2' \leq A < 4'$ | Anchor with Tie-down strap connector |
| 3B | $A \geq 4'$ | No anchorage required unless shown on plans |

| Option | ROAD PAVEMENT APPLICATION | |
|--------|---------------------------|--|
| 1R | $0' \leq A < 2'$ | Anchor each barrier with 3-bolts on traffic face |
| 2R | $6' \leq A < 2'$ | Anchor with Tie-down Strap or Staked Down (flexible) |
| 3R | $A \geq 2'$ | No anchorage required |

Δ This dimension may be reduced to 1' on a newly constructed Bridge Deck.
 Note: BRIDGE APPLICATION (Opt. 1 B) may be used in lieu of (Opt. 2 B) with prior approval from the State Bridge Office.



FLEXIBLE PAVEMENT ROAD APPLICATION ELEVATION - STAKED DOWN (Opt. 2 R)

Note: See Std. Drawing No. RD622 for details and quantities not shown on this sheet.

| NO. | DATE | REVISIONS | BY | APPD. |
|-----|----------|--|--------|--------|
| 6 | 12-31-13 | Rev. Note (Alt. Drill. & Grout. Anch.) | S.W.K. | J.O.B. |
| 5 | 6-27-11 | Revised General Note | S.W.K. | J.O.B. |
| 4 | 9-14-10 | Add. through bolt with asphalt over. | S.W.K. | J.O.B. |
| 3 | 2-2-10 | Rev. Anchor to Tie-down callout | S.W.K. | J.O.B. |

KANSAS DEPARTMENT OF TRANSPORTATION

TEMPORARY CONCRETE SAFETY BARRIER TYPE F3 ANCHORAGE

RD622B

| | | | |
|---------------|------------|------------------------|----------------|
| FHWA APPROVAL | 9-4-14 | APP'D. James O. Brewer | TRACED Bowser |
| DESIGNED | DETAIL | QUANTITIES | TRACE CK. King |
| DESIGN CK. | DETAIL CK. | QUAN. CK. | |

Note to Designer: For use on Haunched slab bridges, the Road Designer shall coordinate with the Bridge Designer for "corridor in the reinforcing steel layout to accommodate barrier anchoring". Road Designer shall coordinate with Bridge Designer to accommodate for expansion during construction.
 Plotted 28-MAR-2018 14:59
 Drawn By: jacob.lawhorn
 File: working_rd622b.dgn