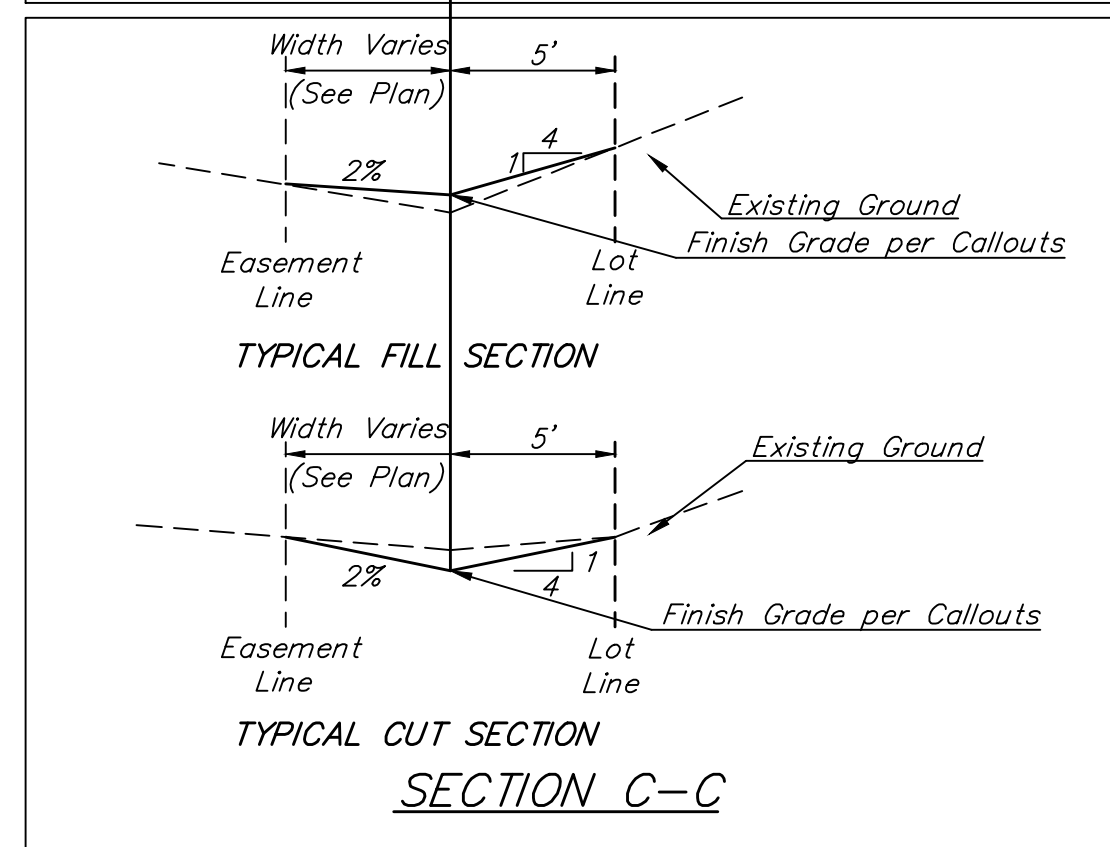
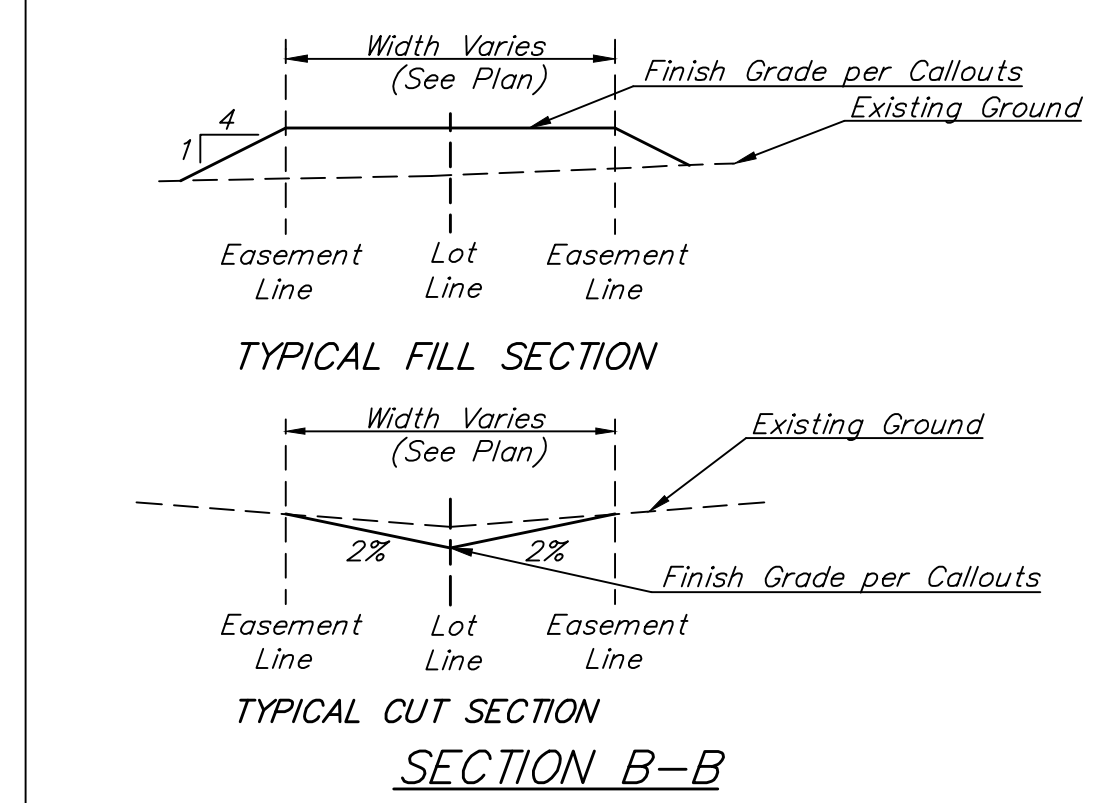
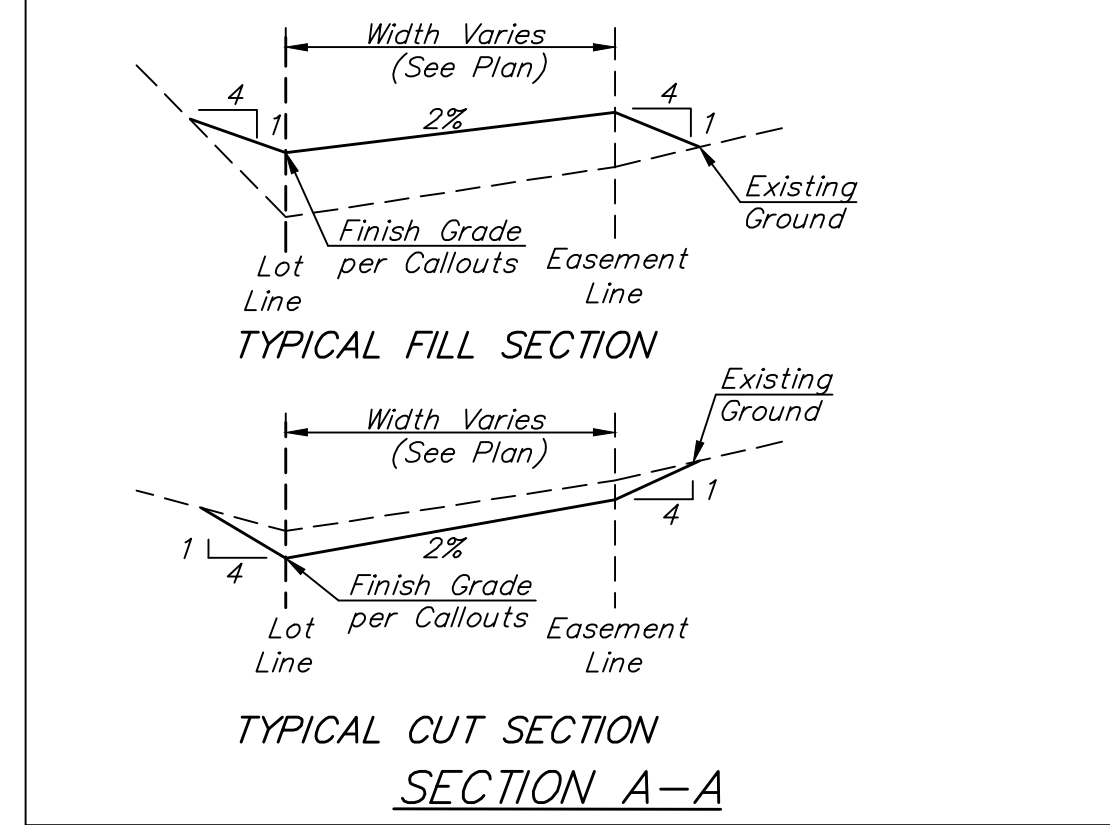
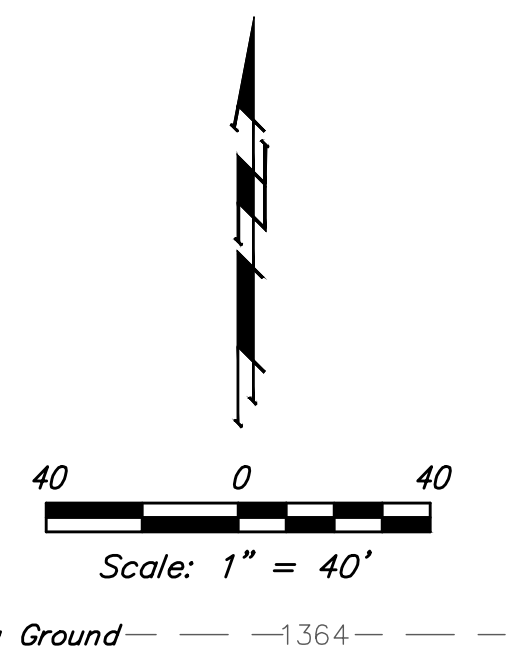


BENCHMARK:
 "+ cut in the top of curb adjacent to the common lot line of Lots 3-4, BLK D, Sandcrest 3rd Add. Elev = 1327.57 (NAVD88)

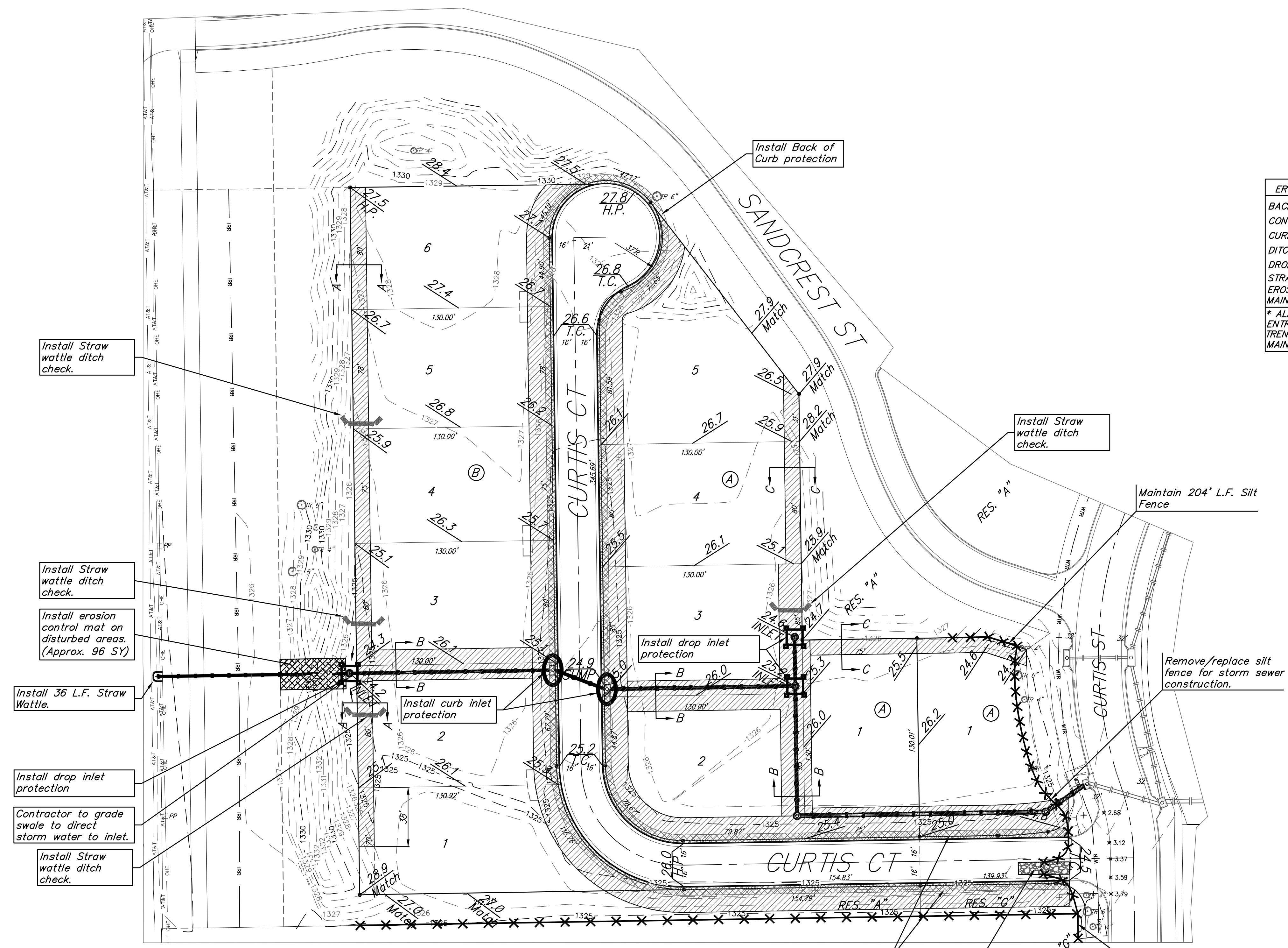
"+" cut in the front top center of the westerly curb inlet 131' North of the center line of Curtis Ct. in Curtis St. in Sandcrest Add. Elev = 1321.79 (NAVD88)



26.1 = Proposed Grades
 = Easements To Be Graded

Approximate Easement Grading Quantities:
 (For Information Only)
 Excavation: 136 C.Y.
 Fill: 30 C.Y.

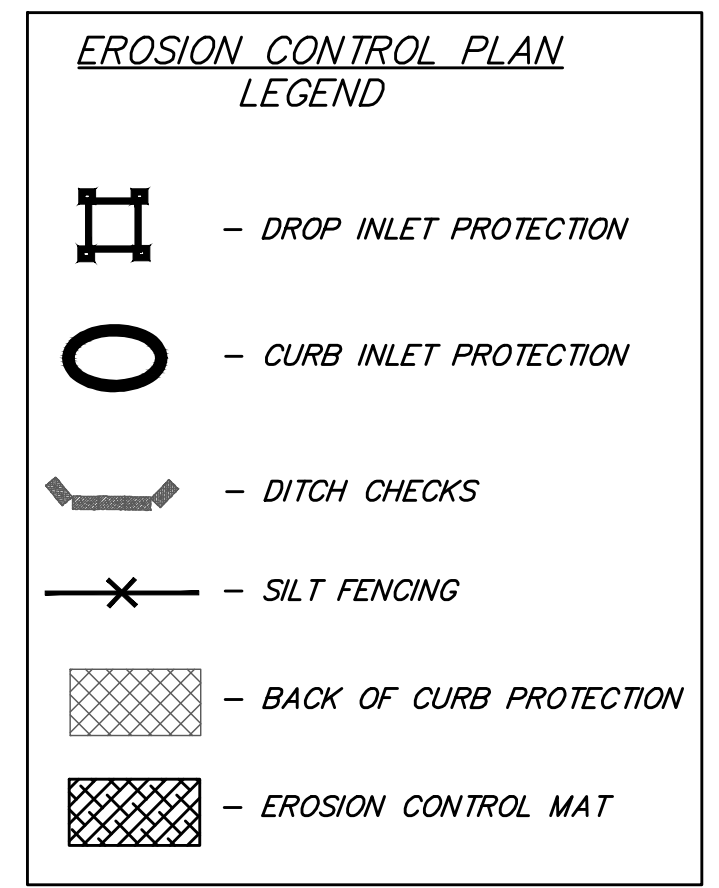
The Contractor shall grade the easements as shown to the elevations given on the easement grading plan.
 The Contractor shall 'straight' grade the easements between the elevations given. Where a callout designates 'Match', the Contractor will grade to the existing ground elevation.
 Excess excavation from easement grading and from sanitary sewer construction shall be placed on the lots as indicated to the elevations shown.
 All cost to be included in the Lump Sum bid item "Easement Grading"



NOTE: For Front Easement Grading, (See Pavement Sections, Sta. 2+00).

EROSION CONTROL MEASURE	INSTALL	MAINTAIN
BACK OF CURB PROTECTION (LF)	1,525	0
CONSTRUCTION ENTRANCE (EA)	0	1
CURB INLET BARRIER (EA)	2	0
DITCH CHECK (EA)	4	0
DROP INLET PROTECTION (EA)	3	0
STRAW WATTLE (LF)	36	0
EROSION CONTROL MAT (SY)	96	0
MAINTAIN EROSION CONTROL BMP's (LS)	0	1

* ALL EXISTING BMPs INCLUDING CONSTRUCTION ENTRANCE, SEDIMENT BARRIERS, SILT FENCE, CUT-OFF TRENCH, AND EROSION CONTROL MAT SHALL BE MAINTAINED AND REPAIRED IF NECESSARY.



NOTES:
 1. Contractor shall make sure all erosion control is in place before project is accepted. This plan represents the minimum standard. Any additional erosion control measures shall be installed by the Contractor as needed.
 2. Removal of Gravel Construction Entrance for pavement construction shall be included in bid item "Site Clearing"
 3. This Plan is Not To Be Used As A Comprehensive Grading Plan. All Spot Elevations Are Proposed & Subject To Change.
 All areas disturbed during construction shall be seeded, mulched, and fertilized as per Cover Sheet General Notes.

Baughman SC Addition
EROSION CONTROL
 Street Improvements

Baughman Company, P.A. 315 Ellis St. Wichita, KS 67211 P 316-262-7271 F 316-262-0149
 ENGINEERING | SURVEYING | PLANNING | LANDSCAPE ARCHITECTURE

PROJECT NUMBER 472-2020-085594	DESIGN AEG	DRAWN CDW
REVISIONS:	APPROVED	DATE 04/14/21
	SCALE Noted	SHEET 6 OF 24

E:\Projects\SC Addition_19-11-P499\Engineering\Phase 1\SC Plans\STR\STR_19-11-E430.dwg