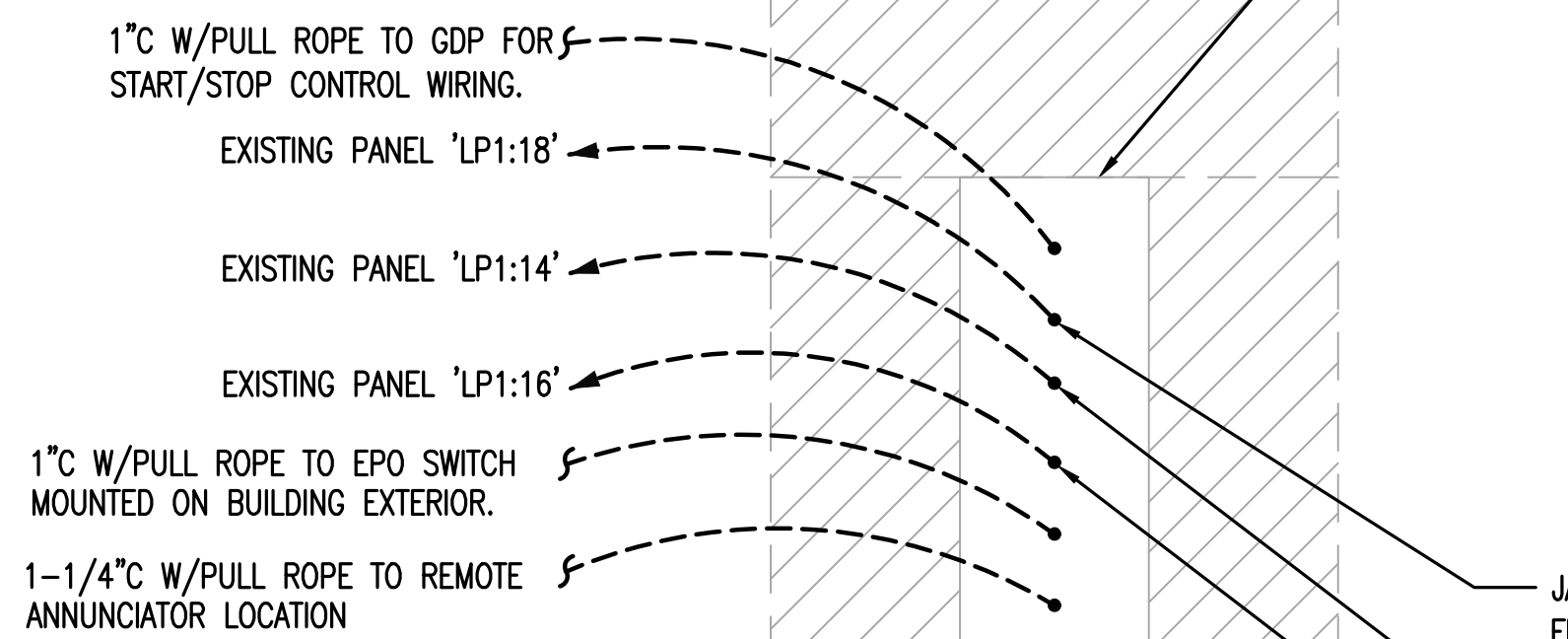


1 TYPICAL RECEPTACLE MOUNTING DETAIL
NO SCALE

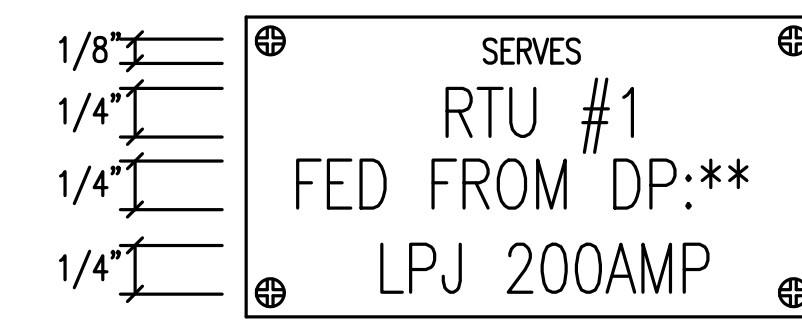


NOTE: ALL CONDUIT SHALL BE 1" MINIMUM UNLESS OTHERWISE NOTED.

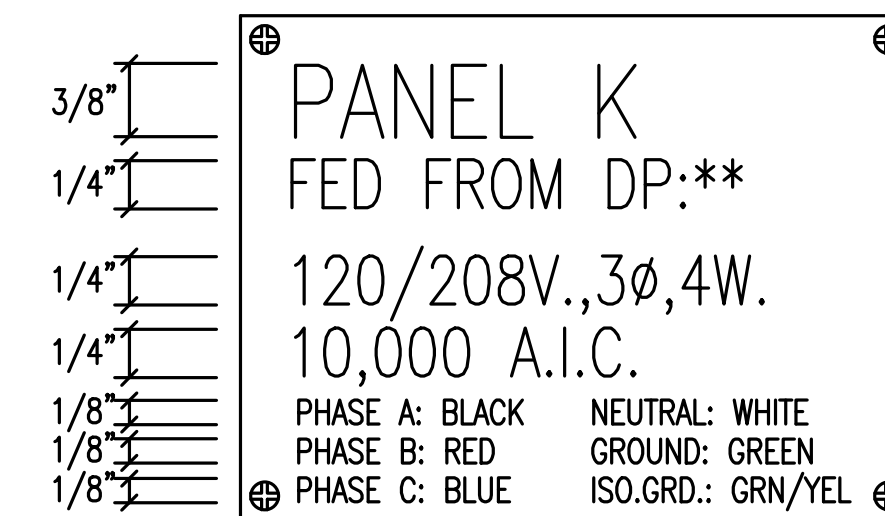
2 ENLARGED GENERATOR DETAIL
NO SCALE



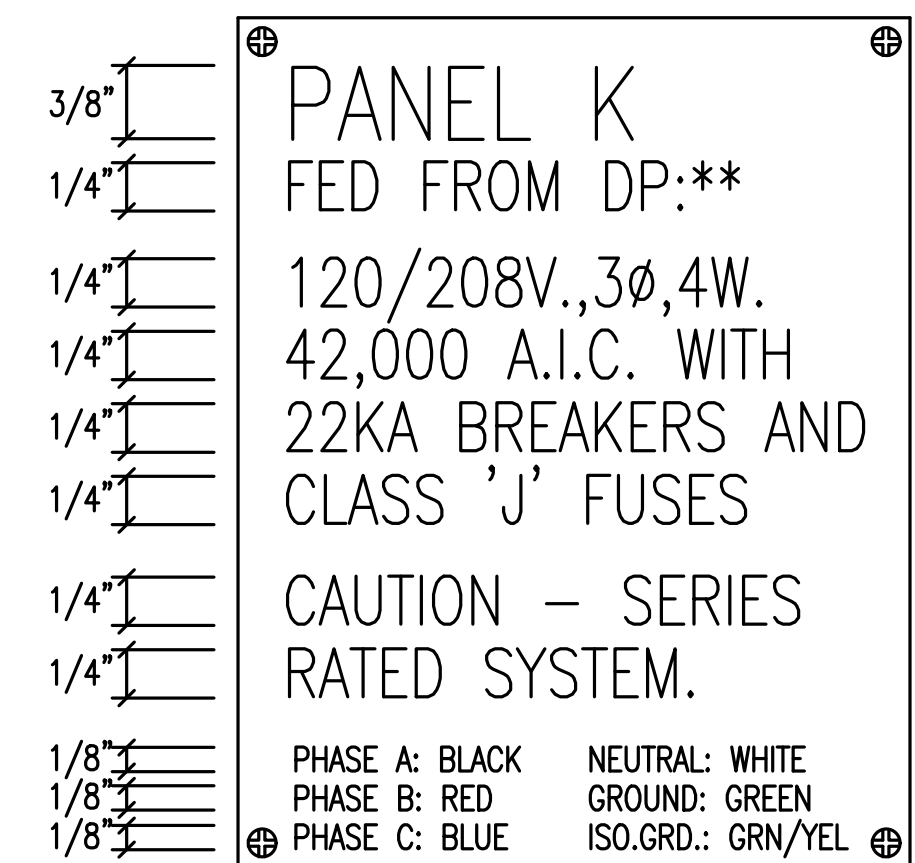
SWITCHBOARD/DISTRIBUTION PANEL/MOTOR CONTROL CENTER BREAKER/SWITCH



DISCONNECT SWITCH



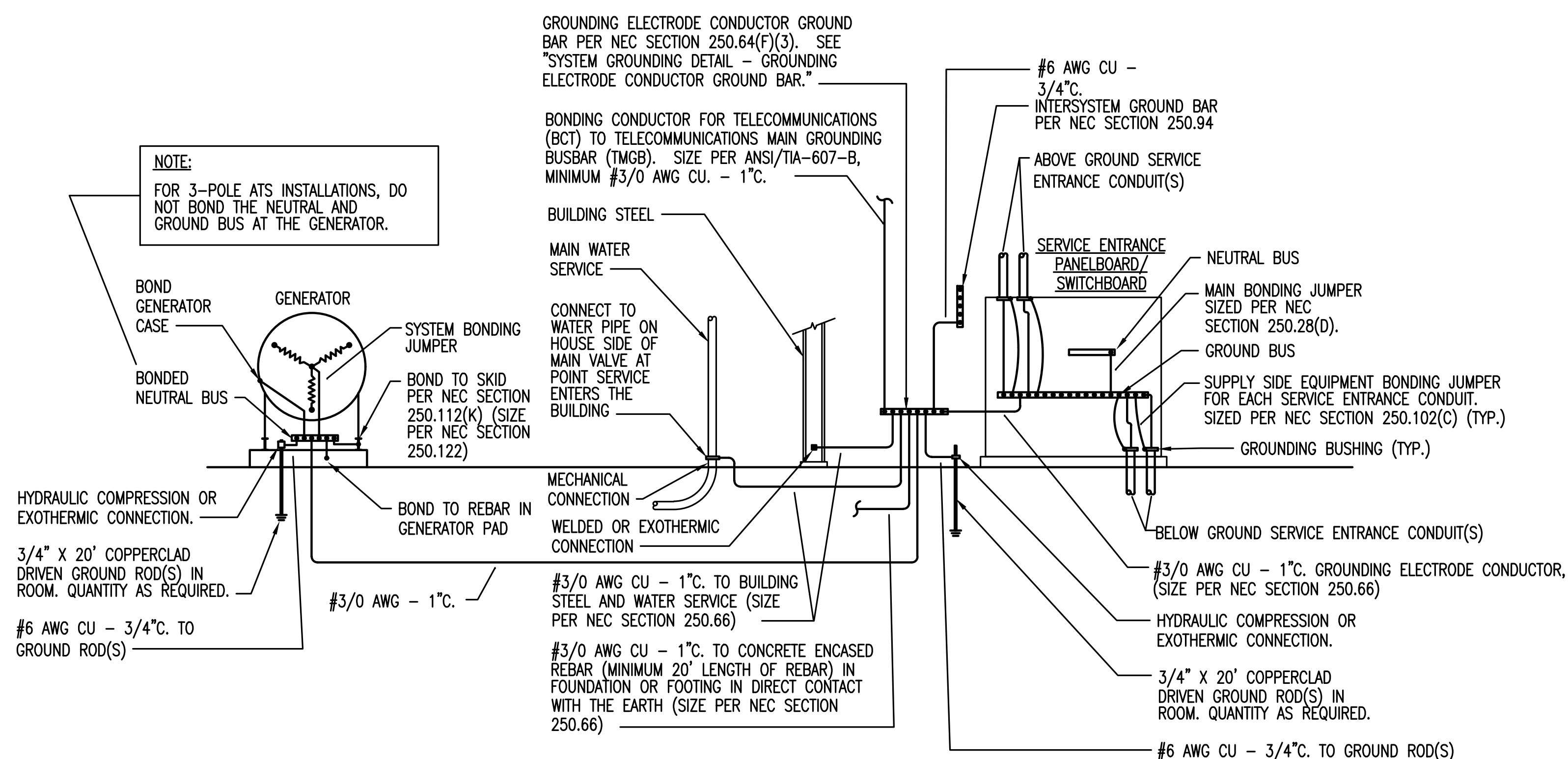
BRANCH CIRCUIT/DISTRIBUTION PANEL



BRANCH CIRCUIT/DISTRIBUTION PANEL SERIES RATED

4 TYPICAL NAME PLATES
NO SCALE

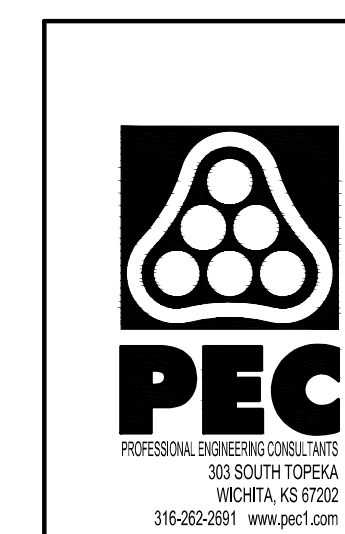
NOTE: SEE SPECIFICATION SECTION 260500 FOR NAME PLATE COLOR REQUIREMENTS.



- NOTES:
1. PROVIDE OTHER GROUNDING CONNECTIONS AS SPECIFIED IN NEC SECTION 250.50.
 2. LABEL EACH GROUNDING ELECTRODE CONDUCTOR AND BONDING JUMPER.
 3. WHERE CONDUCTORS ARE ROUTED IN FERROUS CONDUIT, BOND BOTH ENDS OF THE CONDUIT TO THE CONDUCTOR.

3 SYSTEM GROUNDING DETAIL - PANEL WITH 4-POLE ATS
NO SCALE DESIGNER NOTE: USE WHERE SERVICE HAS GROUND FAULT PROTECTION.

Saved: 03-02-2021 1:54:06 PM by JOSE RAMOS
 Plot Scale: 1:1 03-04-2021 11:36:32 AM by JOSE RAMOS
 U:\Wichita-Facility\180537\000\Elec\Drawings\180537-000 - E501



4			
3			
2			
1	CONSTRUCTION DOCUMENTS		03-04-21
No.	Revision	By	Date
CITY OF WICHITA, KANSAS			
ELECTRICAL DETAILS			
STANDBY POWER GENERATION - SOUTHEAST PUMP STATION			
Professional Engineering Consultants, P.A. 303 S. TOPEKA • WICHITA, KANSAS 67202 316-262-2691 • FAX 316-262-3003			
Designed by	DCG	Job No.	180537-000
Drawn by	JAR	Checked by	DCG
Date	MARCH 2021	Dwg No.	E501