

SANITARY SEWER IMPROVEMENTS

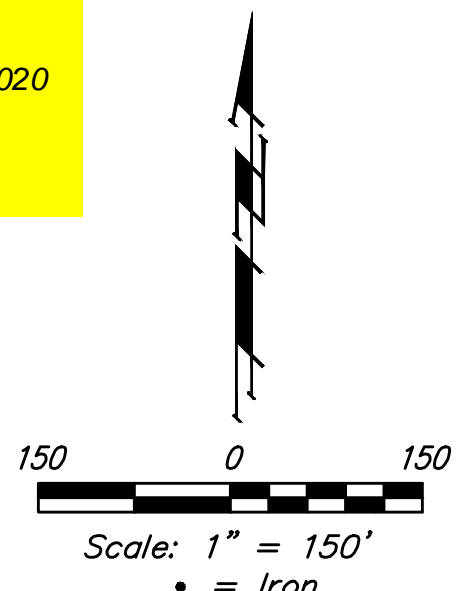
to serve

THE RANCH ADDITION - PHASE II

CITY OF WICHITA, KANSAS

Gary Janzen, P.E. City Engineer
 Project Number: ~~468-84920~~ 468-2019-015116
 OCA Number 744526

Nowak - Contractor
 K. Yale - City of Wichita, Field Project Engineer
 R. Skilling - City of Wichita, Inspector
 As-built
 Stubs & Risers
 Release Date (for connection purposes only): 11/5/2020
 Completion Date: 5/5/2021
 pdf: 4/01/2021 apr



GENERAL NOTES:

1. Contractor will be required to provide notice to utility companies a minimum of seventy-two (72) hours prior to any excavation, as follows:

Kansas One-Call	687-2470
The Contractor must notify the following in case of an emergency:	
Cox Communications	262-4270
Kansas Gas Service	1-888-482-4950
Westar Energy	383-8650
Aquila Energy	1-800-303-0357
AT&T	268-2245
City of Wichita Water Dept.	268-4563
City of Wichita Sewer Maint.	268-4024
City of Wichita Storm Sewer Maint.	268-4090
City of Wichita Traffic Maint.	268-4034
Conoco Phillips Pipeline Co.	1-877-267-2290
Southern Star Pipeline Co.	529-6600
Kinder-Morgan Pipeline Co.	1-888-844-5658
2. Utility service lines, poles, valve boxes, meters, and etcetera are to be adjusted as necessary by others prior to construction unless the plans specifically call for their adjustment by the Contractor or unless the plans specifically identify a utility to be adjusted by its owner during construction. Existing utilities and their location, as shown on the plans, represent the best information obtainable for design. The Contractor will be required to work around existing utilities within the right-of-way which do not conflict with proposed construction.
3. Rubble from the removal of miscellaneous structures and excess excavation which is to be wasted shall be disposed of on sites to be provided by the Contractor. These sites shall be approved by the Engineer as to suitability, appearance and site location. Locations, in the opinion of the Engineer, that will leave an unsightly appearance will not be approved. All disposal sites must be approved by the Kansas Department of Health and Environment. Material either stockpiled or disposed of in a flood plain would require a Kansas State Board of Agriculture permit. Any material dumped in waters of the United States or wetlands is subject to U.S. Corps. of Engineers permitting regulations. Any material buried or stockpiled beyond approved construction limits would require additional archaeological investigations unless buried in a previously approved borrow location.
4. Trees and shrubs in public right-of-way which are in direct conflict with proposed new construction shall be removed by the Contractor with the Engineer's approval. Trees and shrubs which are not in direct conflict with proposed new construction shall be saved and protected from damage.
5. The Contractor shall give all property owners and/or tenants of developed property abutting the construction of this project a minimum of ten (10) days notice prior to start of construction.
6. The Contractor shall be responsible for preserving property irons. The Contractor will be required to re-establish any property irons which are damaged or destroyed by his construction operations. Such irons shall be re-established by a licensed land surveyor in accordance with state laws.
7. All existing and proposed erosion control measures including silt fencing, erosion control mat, straw bales, inlet barriers, and const. entrance shall be maintained throughout construction by the contractor and until project is accepted by the City of Wichita. The on-site engineer shall complete weekly reports on the status of erosion control measures. The contractor shall be required to comply with maintenance and/or replacement of erosion control measures as determined by the on-site engineer until project is accepted by City of Wichita. Maintenance and/or replacement of erosion control measures to be paid by L.S. bid item "Maintain Existing BMP's."
8. All excess excavation shall remain on-site and shall be stockpiled or spread at a location determined by the engineer.
9. The Contractor shall be responsible for maintaining continuous flow of sewage through construction. Contractor's proposed method for maintaining sewage flow shall be approved by the Engineer. Cost of maintaining flow of sewage through construction will not be paid for directly and this cost shall be considered as subsidiary to the other pay items of work.
10. All areas disturbed during construction shall be seeded as follows (Temporary Seeding):

Seed:	Rye grass (PLS)---5 lbs./1000 Sq. Ft.
-------	---------------------------------------

 All costs associated with seeding shall be included in bid item "Seeding". All seeding operations shall conform to City of Wichita Standard Specifications.
11. The Developer for this project is Kevin Mullen, RBR Land, LLC (316) 684-7300.

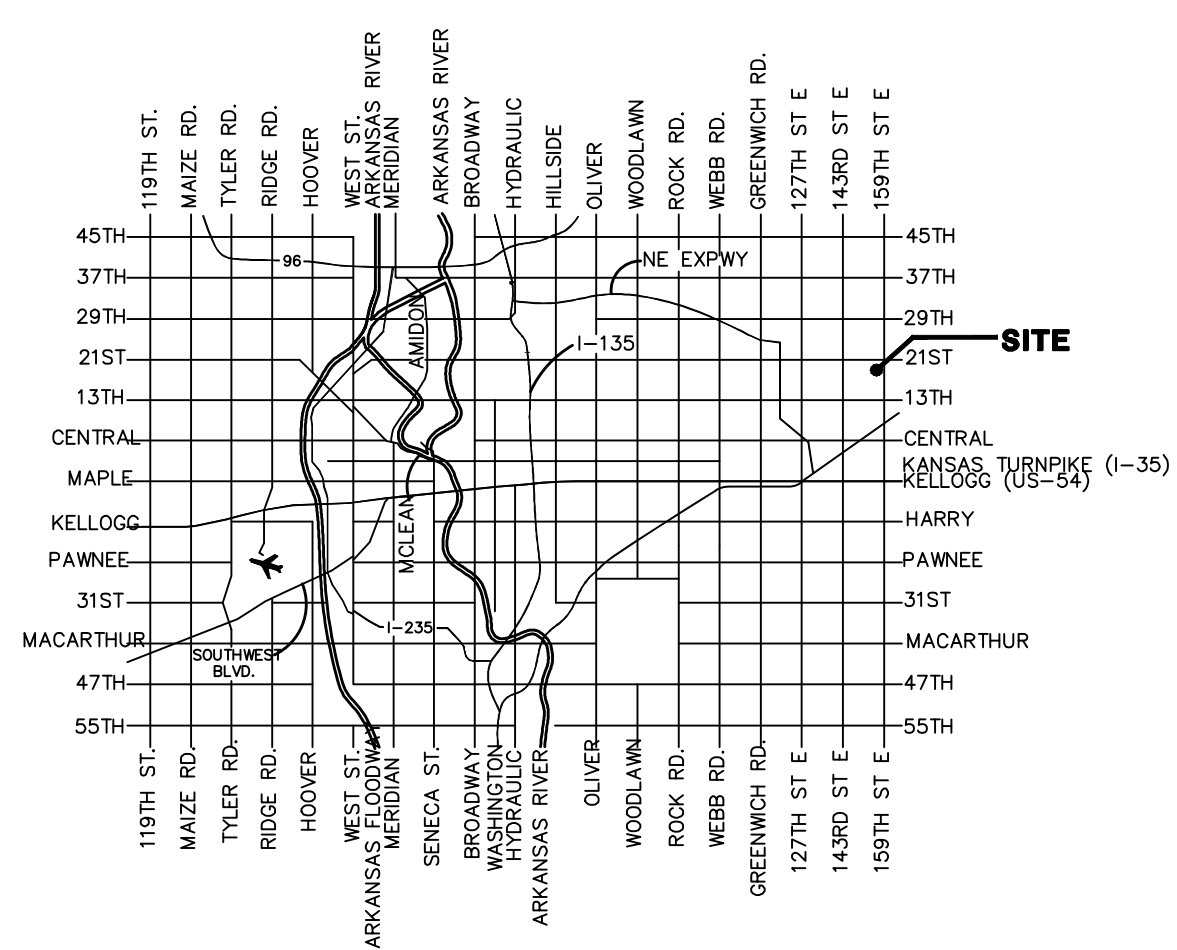
SHEET INDEX

Title Sheet	1
Line 1, Line 1A, & Line 1B	2
Line 1 & Line 1C	3
Erosion Control Plan	4
Erosion Control BMP Details	5-9
Standard Manhole Detail	10
Ring & Cover Detail	11
Vertical Riser Detail	12
Clean Out Detail	13
Coordinate Sheet	14
Copy of Plat	15

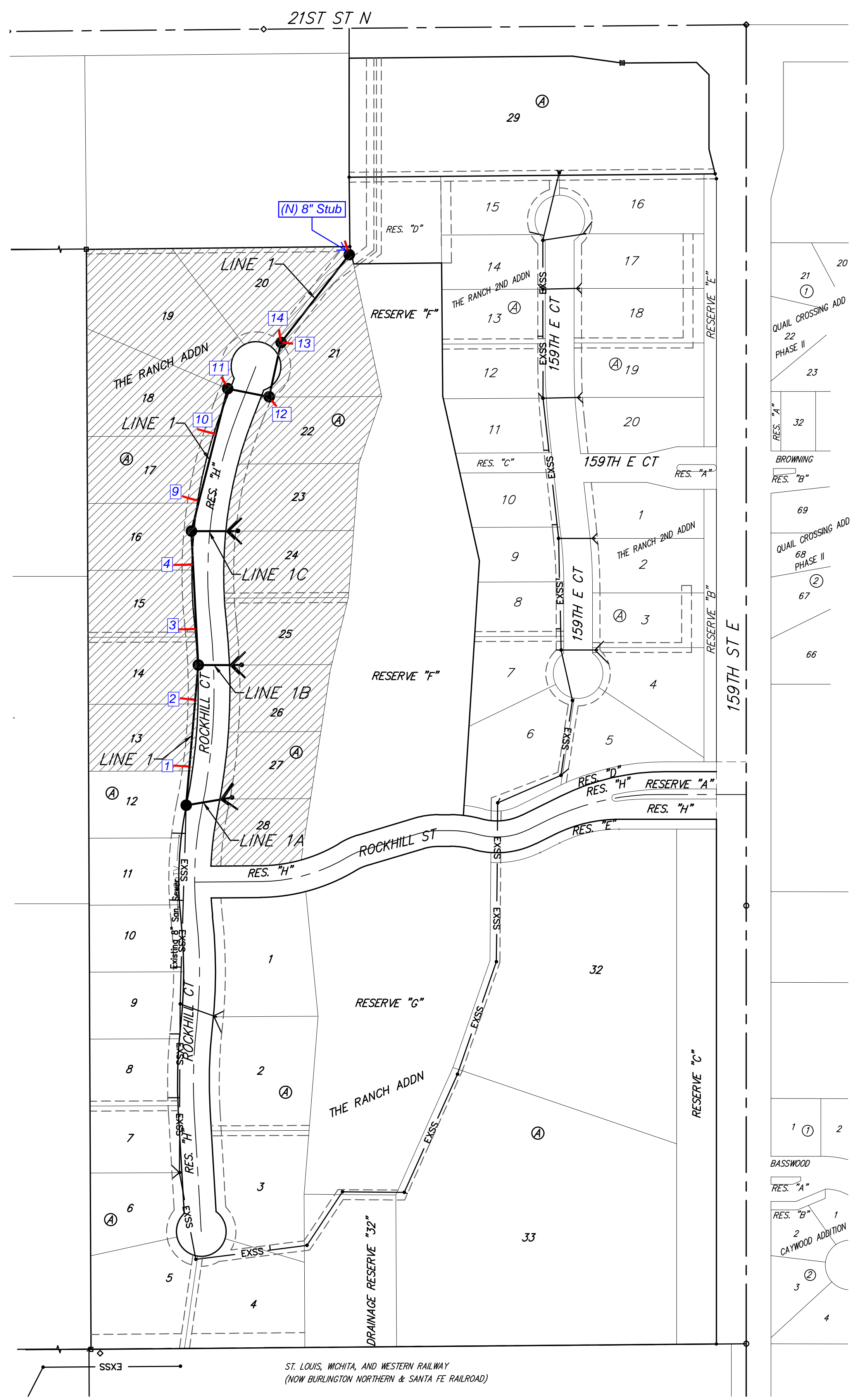
BENCHMARKS

"□" Cut Top of Curb Adjacent to the Southeast Corner, Lot 10, Block A, The Ranch Addition.
 Elev. = 1361.69 NAVD88

"▣" Cut Top of Curb North End of North Return Rock Hill & Rock Hill Ct. West of Southwest Corner, Lot 28, Block A, The Ranch Addition
 Elev. = 1362.94 NAVD88



VICINITY MAP



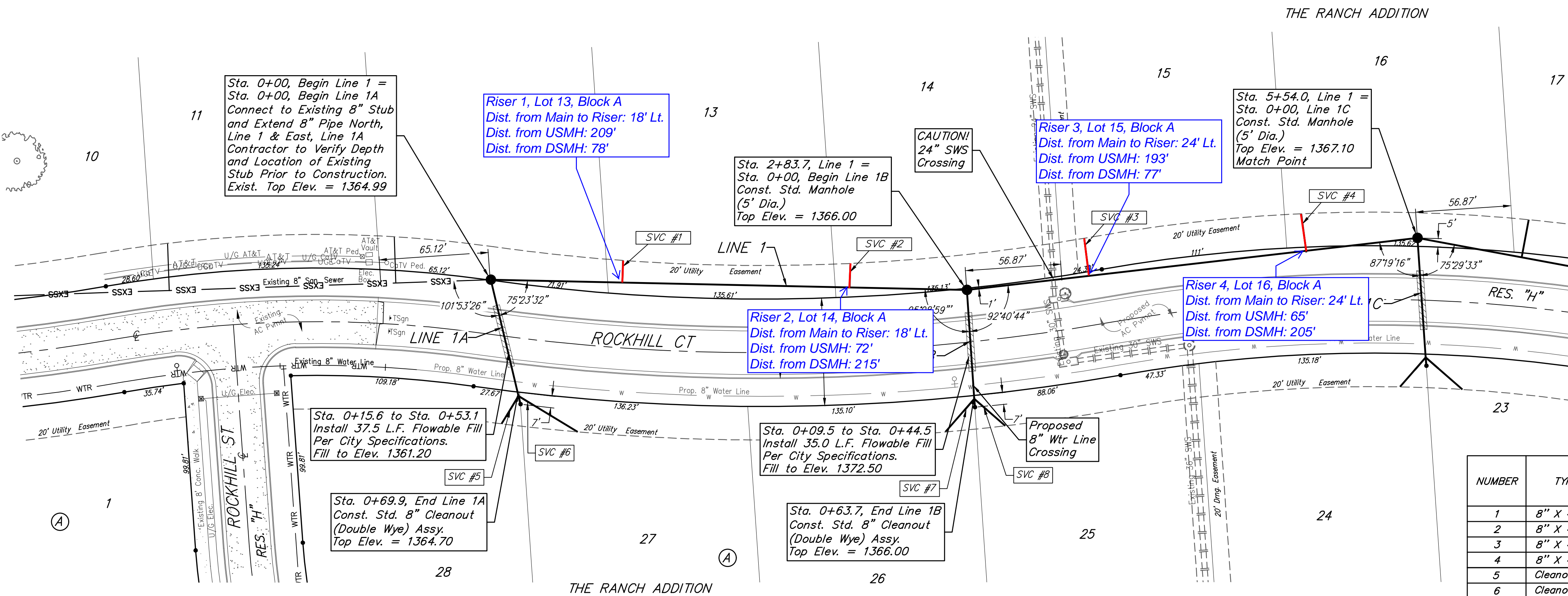
BENEFIT DISTRICT

Baughman Company, P.A. 315 Ellis St. Wichita, KS 67211 P 316-262-7271 F 316-262-0149
 ENGINEERING | SURVEYING | PLANNING | LANDSCAPE ARCHITECTURE

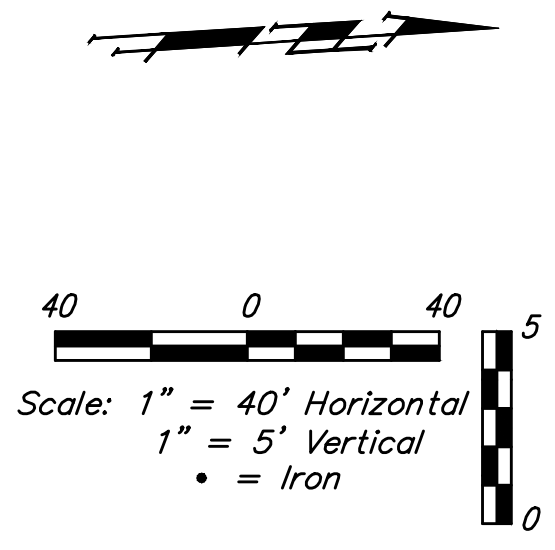
KANSAS
 PROFESSIONAL ENGINEER
 No. 17919
 Exp. 5/31/2022

BENCHMARKS:
 "□" Cut Top of Curb Adjacent to the Southeast Corner, Lot 10, Block A, The Ranch Addition. Elev. = 1361.69 NAVD88

"田" Cut Top of Curb North End of North Return Rock Hill & Rock Hill Ct. West of Southwest Corner, Lot 28, Block A, The Ranch Addition. Elev. = 1362.94 NAVD88



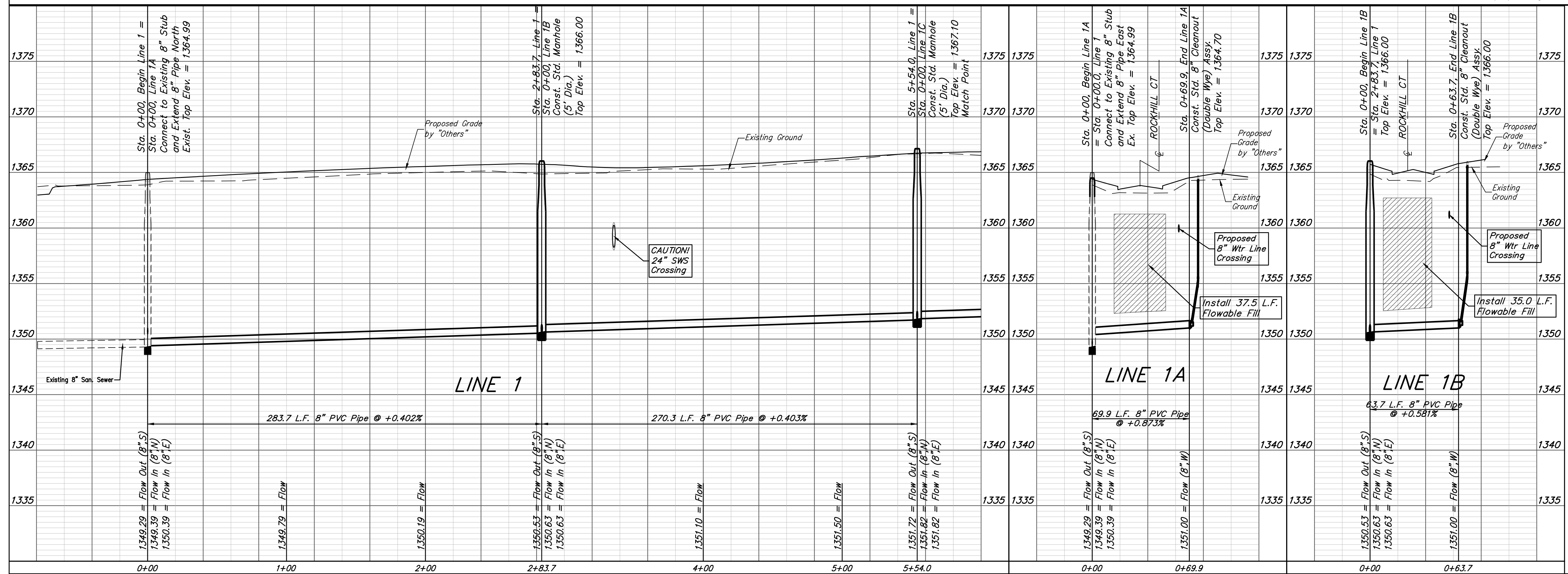
The Contractor shall be required to backfill trench with sand from Sta. 0+00 to Sta. 5+54.0, Line 1. To be bid as "L.F. Fill, Sand, Flushed & Vibrated"



SEWER SERVICE TABLE

NUMBER	TYPE	LOCATION			FOR INFORMATION ONLY	
		LOT NO.	BLOCK NO.	LINE NO. STATION/DIRECTION	APPROXIMATE LENGTH 4" PIPE	
					VERTICAL	HORIZONTAL
1	8" X 4" Tee	13	A	1 0+79.0/Lt.	10.8'	13.2'
2	8" X 4" Tee	14	A	1 2+14.0/Lt.	11'	14.5'
3	8" X 4" Tee	15	A	1 3+58.0/Lt.	10.4'	22.6'
4	8" X 4" Tee	16	A	1 4+88.0/Lt.	10.6'	23.3'
5	Cleanout Wye	28	A	1A 0+69.9/Rt.	9.1'	19.4'
6	Cleanout Wye	27	A	1A 0+69.9/Lt.	8.7'	41.3'
7	Cleanout Wye	10	A	1B 0+63.7/Rt.	10.1'	26.1'
8	Cleanout Wye	25	A	1B 0+63.7/Lt.	10.1'	24.5'

NOTE: Vertical Riser Pipe shall be extended to 2' minimum above ground water elevation and 4' maximum below proposed ground elevation.



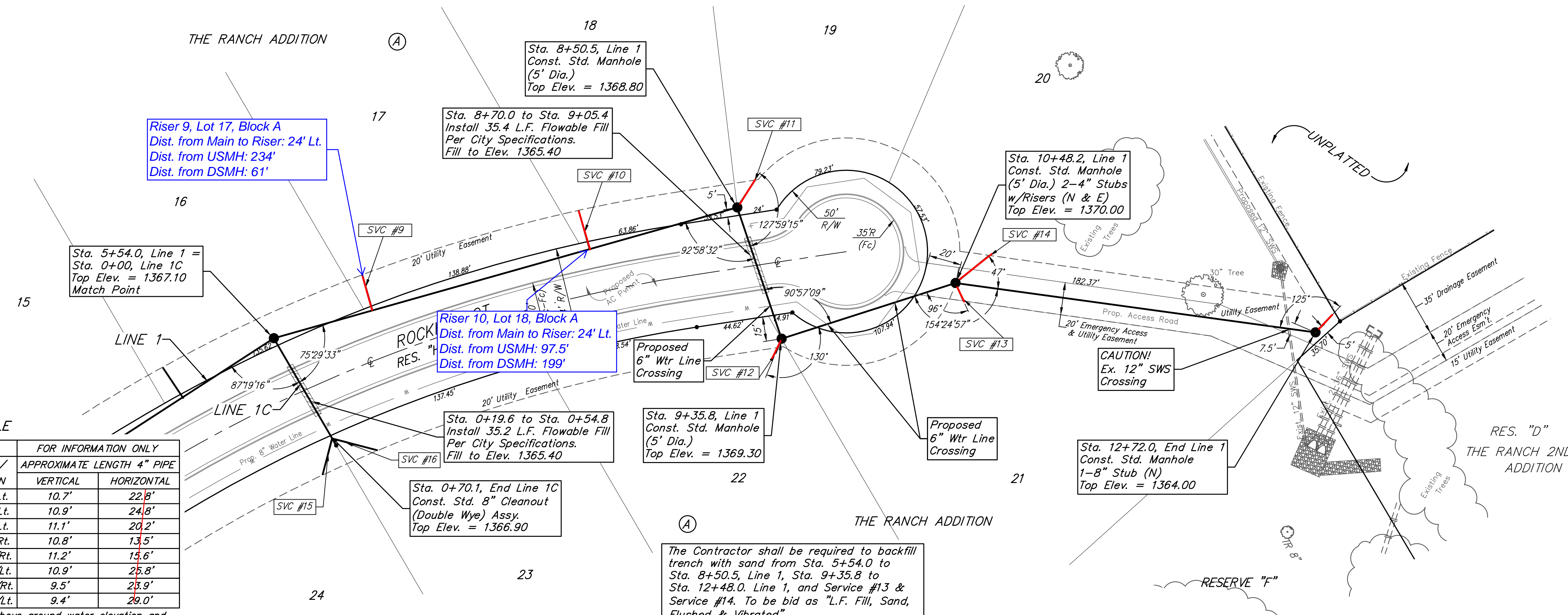
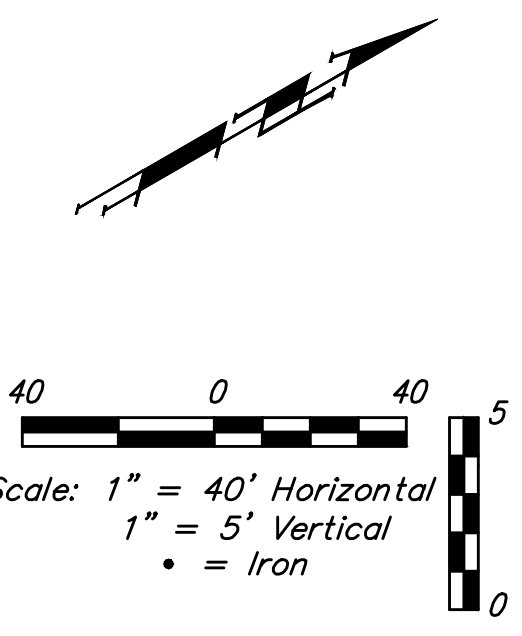
Baughman The Ranch Addition - Phase II
LINE 1, 1A & 1B
 Sanitary Sewer Improvements

PROJECT NUMBER: 468-84920
 DESIGN: DRAWN
 APPROVED: DATE: May 21, 2020
 SCALE: Noted
 SHEET: **2 OF 15**

REVISIONS:

BENCHMARKS:
 "□" Cut Top of Curb Adjacent to the Southeast Corner, Lot 10, Block A, The Ranch Addition.
 Elev. = 1361.69 NAVD88

"田" Cut Top of Curb North End of North Return Rock Hill & Rock Hill Ct. West of Southwest Corner, Lot 28, Block A, The Ranch Addition.
 Elev. = 1362.94 NAVD88

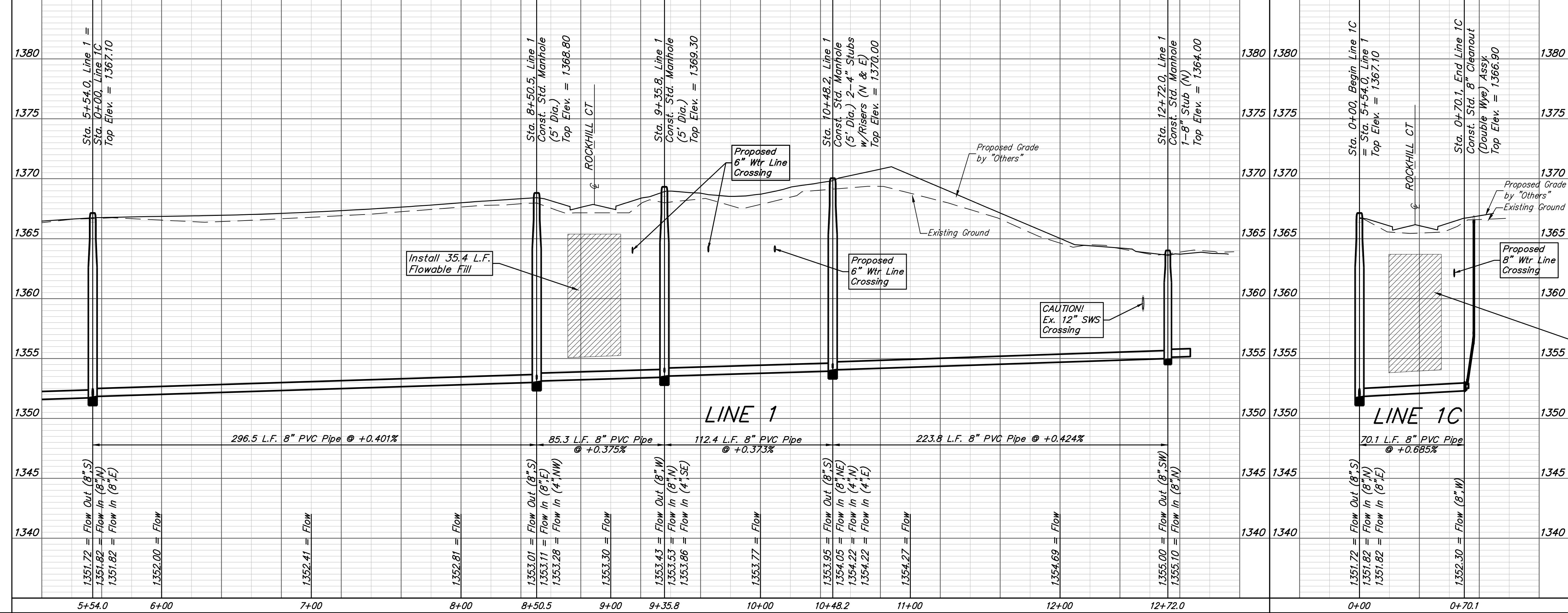


SEWER SERVICE TABLE

NUMBER	TYPE	LOCATION				FOR INFORMATION ONLY	
		LOT NO.	BLOCK NO.	LINE NO.	STATION/DIRECTION	APPROXIMATE LENGTH 4" PIPE	VERTICAL
9	8" X 4" Tee	17	A	1	6+17.0/Lt.	10.7'	22.8'
10	8" X 4" Tee	18	A	1	7+56.0/Lt.	10.9'	24.8'
11	4" Stub	19	A	1	8+50.5/Lt.	11.1'	20.2'
12	4" Stub	22	A	1	9+35.8/Rt.	10.8'	13.5'
13	4" Stub	21	A	1	10+48.2/Rt.	11.2'	15.6'
14	4" Stub	20	A	1	10+48.2/Lt.	10.9'	25.8'
15	Cleanout Wye	24	A	1C	0+70.1/Rt.	9.5'	23.9'
16	Cleanout Wye	23	A	1C	0+70.1/Lt.	9.4'	29.0'

NOTE: Vertical Riser Pipe shall be extended to 2' minimum above ground water elevation and 4' maximum below proposed ground elevation.

The Contractor shall be required to backfill trench with sand from Sta. 5+54.0 to Sta. 8+50.5, Line 1, Sta. 9+35.8 to Sta. 12+48.0, Line 1, and Service #13 & Service #14. To be bid as "L.F. Fill, Sand, Flushed & Vibrated"



Install 35.2 L.F. Flowable Fill



Baughman The Ranch Addition - Phase II
LINE 1 & 1C
 Sanitary Sewer Improvements

Baughman Company, P.A. 315 Ellis St. Wichita, KS 67211 P 316-262-7271 F 316-262-0149
 ENGINEERING | SURVEYING | PLANNING | LANDSCAPE ARCHITECTURE

PROJECT NUMBER: 468-84920 DESIGN: DRAWN: DATE: May 21, 2020
 REVISIONS: APPROVED: Noted SHEET: 3 OF 15

C:\Projects\The Ranch_12081989\Engineering\Phase 2\SS_2021-E481\SS PLANS.dwg