

# GENERAL NOTES:

1. Contractor will be required to provide notice to utility companies a minimum of seventy-two (72) hours prior to any excavation, as follows:

Kansas One-Call 687-2470

The Contractor must notify the following in case of an emergency:

Cox Communications 262-4270  
 Kansas Gas Service 1-888-482-4950  
 Westar Energy 383-8650  
 Aquila Energy 1-800-303-0357  
 AT&T 268-2245  
 City of Wichita Water Dept. 268-4563  
 City of Wichita Sewer Maint. 268-4024  
 City of Wichita Storm Sewer Maint. 268-4090  
 City of Wichita Traffic Maint. 268-4034  
 Conoco Phillips Pipeline Co. 1-877-267-2290  
 Southern Star Pipeline Co. 529-6600  
 Kinder-Morgan Pipeline Co. 1-888-844-5658

2. Utility service lines, poles, valve boxes, meters, and etcetera are to be adjusted as necessary by others prior to construction unless the plans specifically call for their adjustment by the Contractor or unless the plans specifically identify a utility to be adjusted by its owner during construction. Existing utilities and their location, as shown on the plans, represent the best information obtainable for design. The Contractor will be required to work around existing utilities within the right-of-way which do not conflict with proposed construction.

3. Rubble from the removal of miscellaneous structures and excess excavation which is to be wasted shall be disposed of on sites to be provided by the Contractor. These sites shall be approved by the Engineer as to suitability, appearance and site location. Locations, in the opinion of the Engineer, that will leave an unsightly appearance will not be approved. All disposal sites must be approved by the Kansas Department of Health and Environment. Material either stockpiled or disposed of in a flood plain would require a Kansas State Board of Agriculture permit. Any material dumped in waters of the United States or wetlands is subject to U.S. Corps of Engineers permitting regulations. Any material buried or stockpiled beyond approved construction limits would require additional archaeological investigations unless buried in a previously approved borrow location.

4. Trees and shrubs in public right-of-way which are in direct conflict with proposed new construction shall be removed by the Contractor with the Engineer's approval. Trees and shrubs which are not in direct conflict with proposed new construction shall be saved and protected from damage.

5. The Contractor shall give all property owners and/or tenants of developed property abutting the construction of this project a minimum of ten (10) days notice prior to start of construction.

6. The Contractor shall be responsible for preserving property irons. The Contractor will be required to re-establish any property irons which are damaged or destroyed by his construction operations. Such irons shall be re-established by a licensed land surveyor in accordance with state laws.

7. All existing and proposed erosion control measures including silt fencing, erosion control mat, straw bales, inlet barriers, and const. entrance shall be maintained throughout construction by the contractor and until project is accepted by the City of Wichita. The on-site engineer shall complete weekly reports on the status of erosion control measures. The contractor shall be required to comply with maintenance and/or replacement of erosion control measures as determined by the on-site engineer until project is accepted by City of Wichita. Maintenance and/or replacement of erosion control measures to be paid by L.S. bid item "Maintain Existing BMP's."

8. All excess excavation shall remain on-site and shall be stockpiled or spread at a location determined by the engineer.

9. The Contractor shall be responsible for maintaining continuous flow of sewage through construction. Contractor's proposed method for maintaining sewage flow shall be approved by the Engineer. Cost of maintaining flow of sewage through construction will not be paid for directly and this cost shall be considered as subsidiary to the other pay items of work.

10. All areas disturbed during construction shall be seeded as follows (Temporary Seeding):  
 Seed: Rye grass (PLS)--5 lbs./1000 Sq. Ft.

All costs associated with seeding shall be included in bid item "Seeding". All seeding operations shall conform to City of Wichita Standard Specifications.

11. Trees and shrubs in the work area which are in direct conflict with proposed new construction shall be removed by the Contractor ONLY with the Developer or Baughman Company approval. Trees and shrubs which are not in direct conflict with proposed new construction shall be saved and protected from damage. If trimming is necessary, a chainsaw shall be used. Breaking limbs with equipment will not be allowed. An on-site pre-construction meeting will occur prior to any construction to discuss tree removal, tree protection, and tree trimming.

12. The Developer for this project is Jay Russell  
 P.O. Box 75337  
 Wichita, KS 67272  
 (316)990-2105  
 jr@jussellco.com

13. Construction Sequence: This construction sequence is a recommendation and may be adjusted by City of Wichita Construction Engineering.

- 1) Water Line project is planned to be first due to lines being deeper than sanitary sewer and storm sewer.
- 2) Sanitary sewer project
- 3) Streets/SWS project

## BENCHMARKS

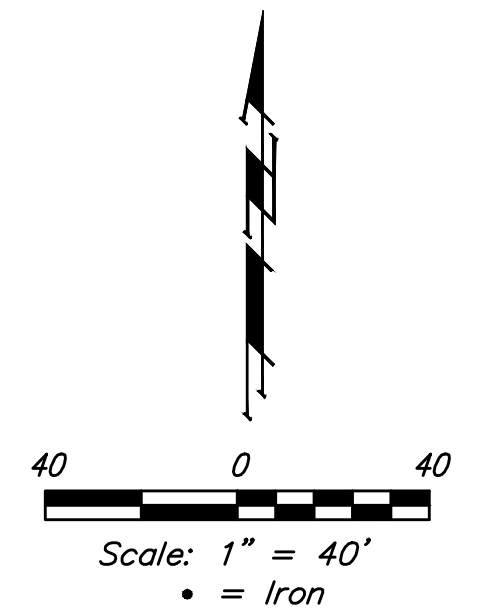
\*" cut in the top of curb adjacent to the common lot line of Lots 3-4, BLK D, Sandcrest 3rd Add.  
 Elev = 1327.57 (NAVD88)

\*" cut in the front top center of the westerly curb inlet 131' North of the center line of Curtis Ct. in Curtis St. in Sandcrest Add.  
 Elev = 1321.79 (NAVD88)

# SANITARY SEWER IMPROVEMENTS to serve **SC ADDITION** CITY OF WICHITA, KANSAS

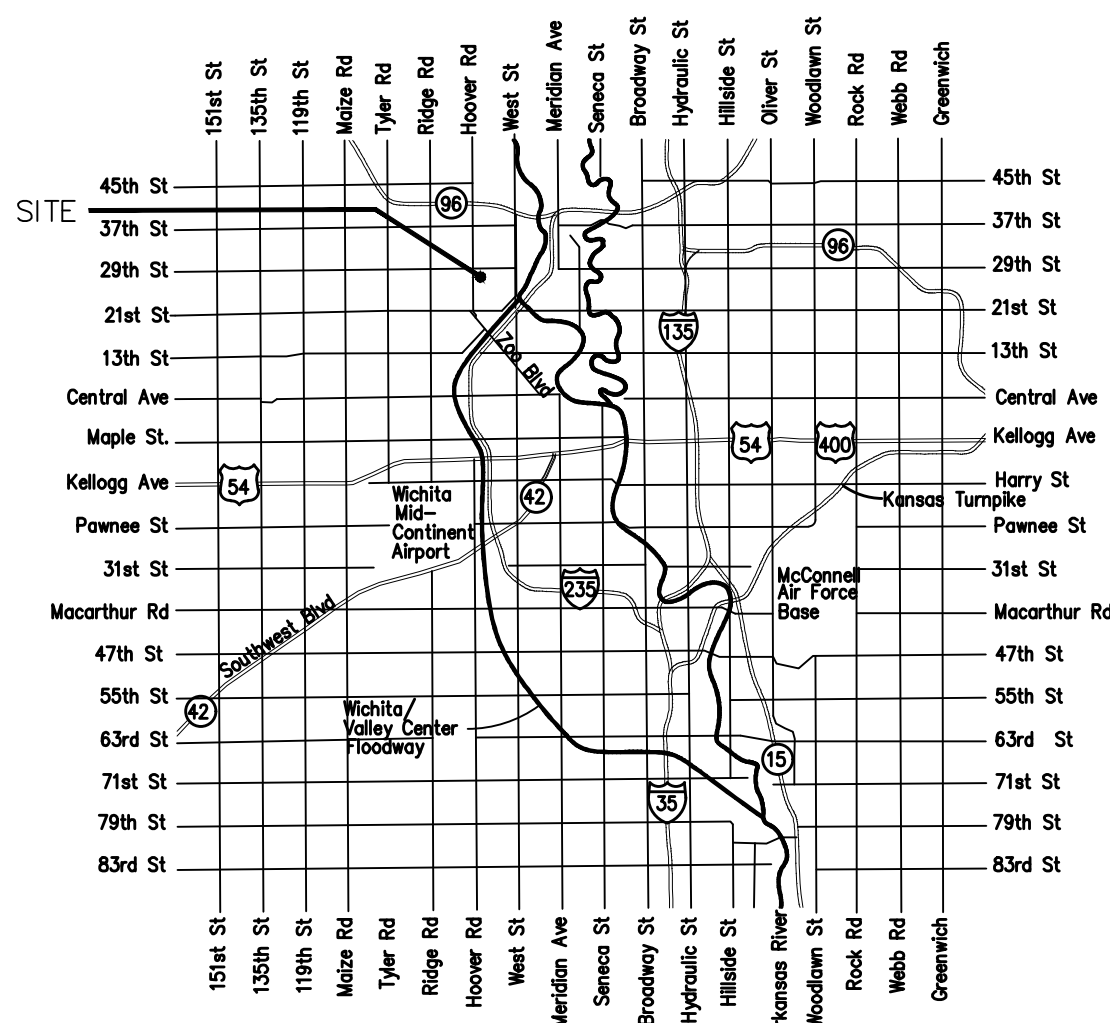
Gary Janzen, P.E. City Engineer  
 Project Number 468-2020-001910  
 OCA Number 810010

Apex Excavating - Contractor  
 B. Woods - City of Wichita, Field Project Engineer  
 I. Powell - Baughman, Inspector  
 As-built  
 Stubs & Risers  
 Release Date (for connection purposes only): 11/7/2020  
 Completion Date: 5/4/2021  
 pdf: apr 4/2/2021



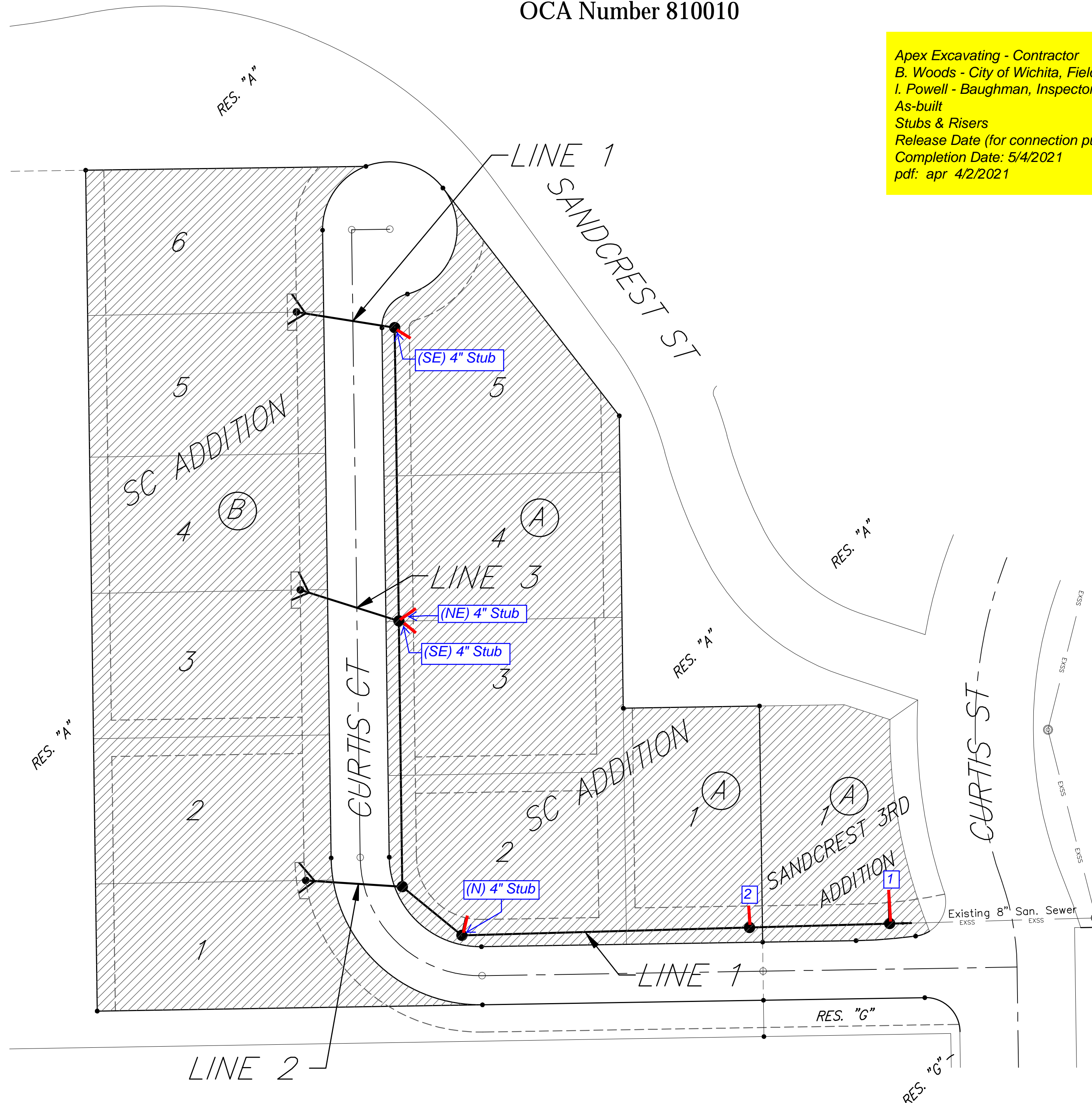
## SHEET INDEX

Title Sheet	1
Line 1	2
Line 2 & 3	3
Erosion Control Plan	4
Erosion Control BMP Details	5-9
Standard Manhole Detail	10
Ring & Cover Detail	11
Vertical Riser Detail	12
Cleanout Detail	13
Coordinate Sheet	14
Copy of Plat	15



Vicinity Map

BENEFIT DISTRICT



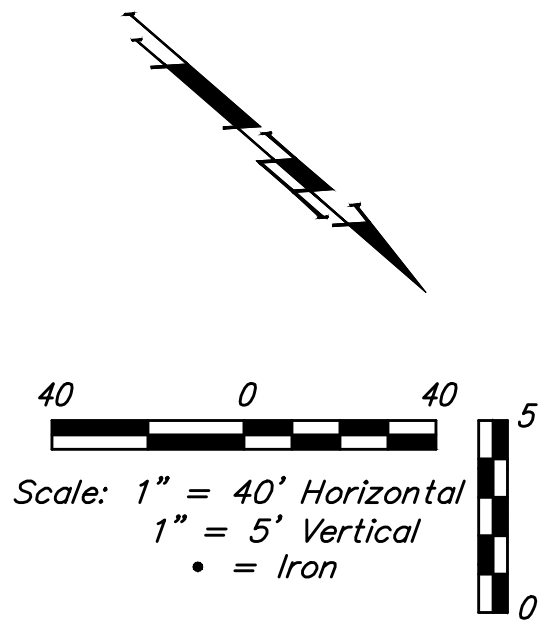
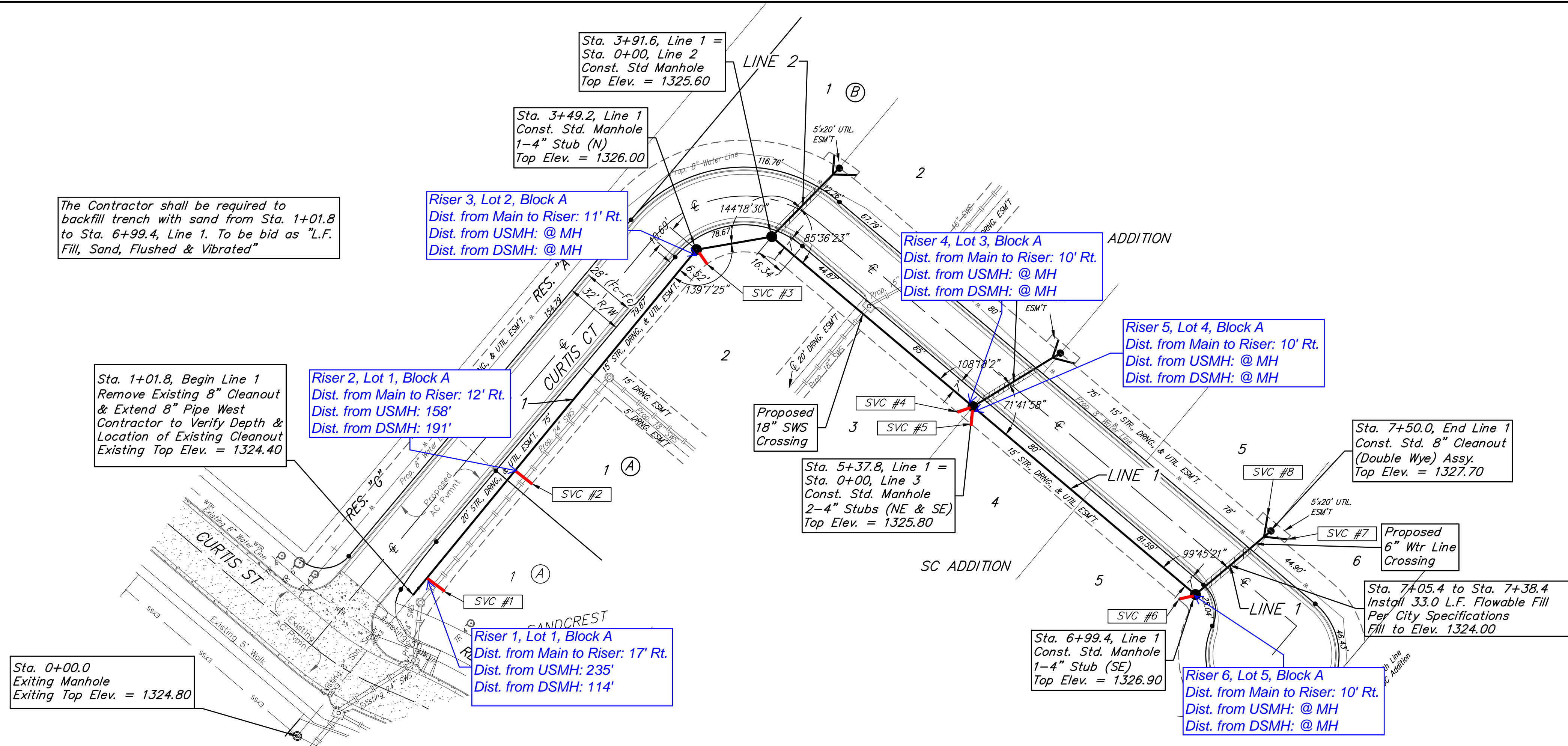
**Baughman**  
 Baughman Company, P.A. 315 Ellis St. Wichita, KS 67211 P 316-262-7271 F 316-262-0148  
 ENGINEERING | SURVEYING | PLANNING | LANDSCAPE ARCHITECTURE



**BENCHMARK:**  
 "+ cut in the top of curb adjacent to the common lot line of Lots 3-4, BLK D, Sandcrest 3rd Add. Elev = 1327.57 (NAVD88)

"+" cut in the front top center of the westerly curb inlet 131' North of the center line of Curtis Ct. in Curtis St. in Sandcrest Add. Elev = 1321.79 (NAVD88)

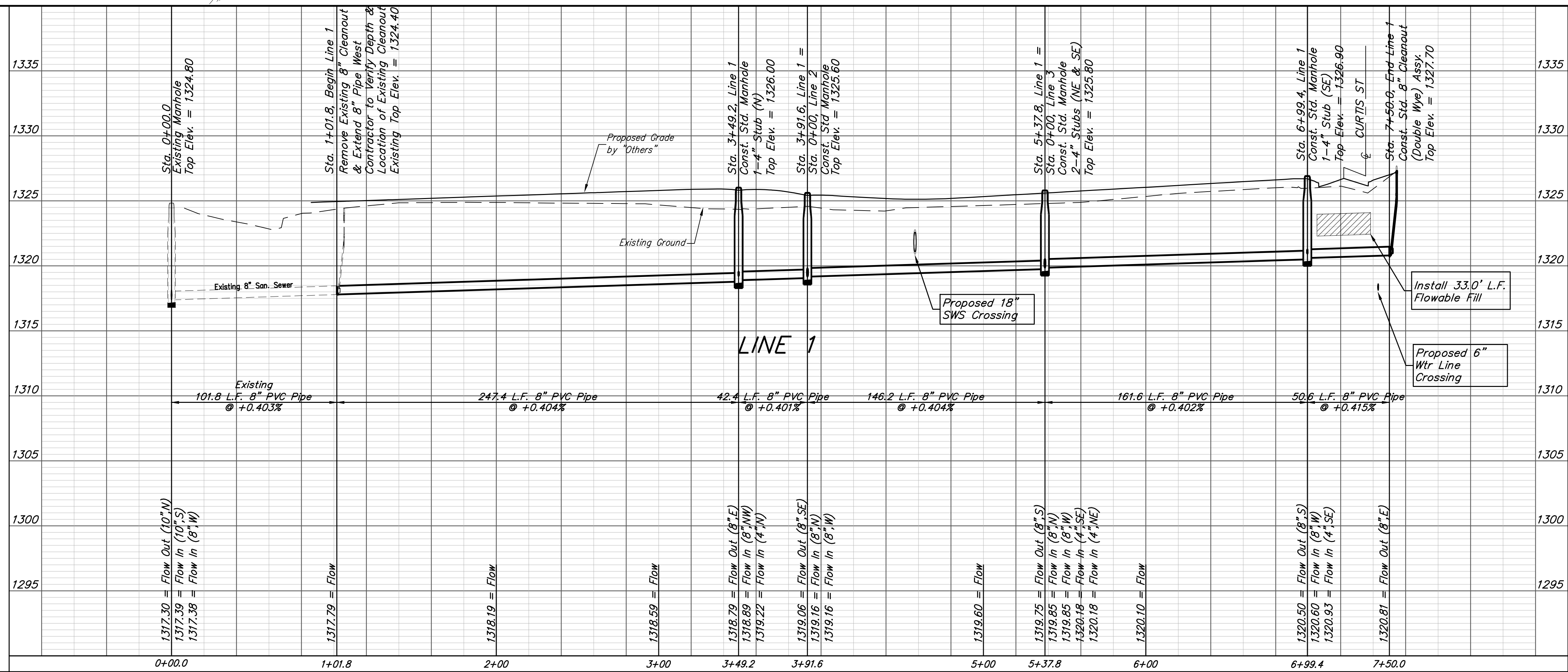
The Contractor shall be required to backfill trench with sand from Sta. 1+01.8 to Sta. 6+99.4, Line 1. To be bid as "L.F. Fill, Sand, Flushed & Vibrated"



SEWER SERVICE TABLE

NUMBER	TYPE	LOCATION				FOR INFORMATION ONLY	
		LOT NO.	BLOCK NO.	LINE NO.	STATION/ DIRECTION	APPROXIMATE LENGTH 4" PIPE VERTICAL	HORIZONTAL
1	8" X 4" Tee	1	A	1	1+14/Rt.	2.0'	17'
2	8" X 4" Tee	1	A	1	1+91/Rt.	2.0'	12'
3	4" Stub	2	A	1	3+48.1/Rt.	0.0'	11'
4	4" Stub	3	A	1	5+38.2/Rt.	0.0'	10'
5	4" Stub	4	A	1	5+38.2/Rt.	0.0'	10'
6	4" Stub	5	A	1	6+99.8/Rt.	0.0'	10'
7	Wye Ext	6	A	1	7+50.3/Rt.	0.0'	9'
8	Wye Ext	7	A	1	7+50.3/Lt.	0.0'	6'

NOTE: If vertical length is greater than zero, vertical riser pipe shall be extended to 2' minimum above ground water elevation and 4' maximum below proposed ground elevation.



**Baughman** SC Addition  
**LINE 1**  
 Sanitary Sewer Improvements

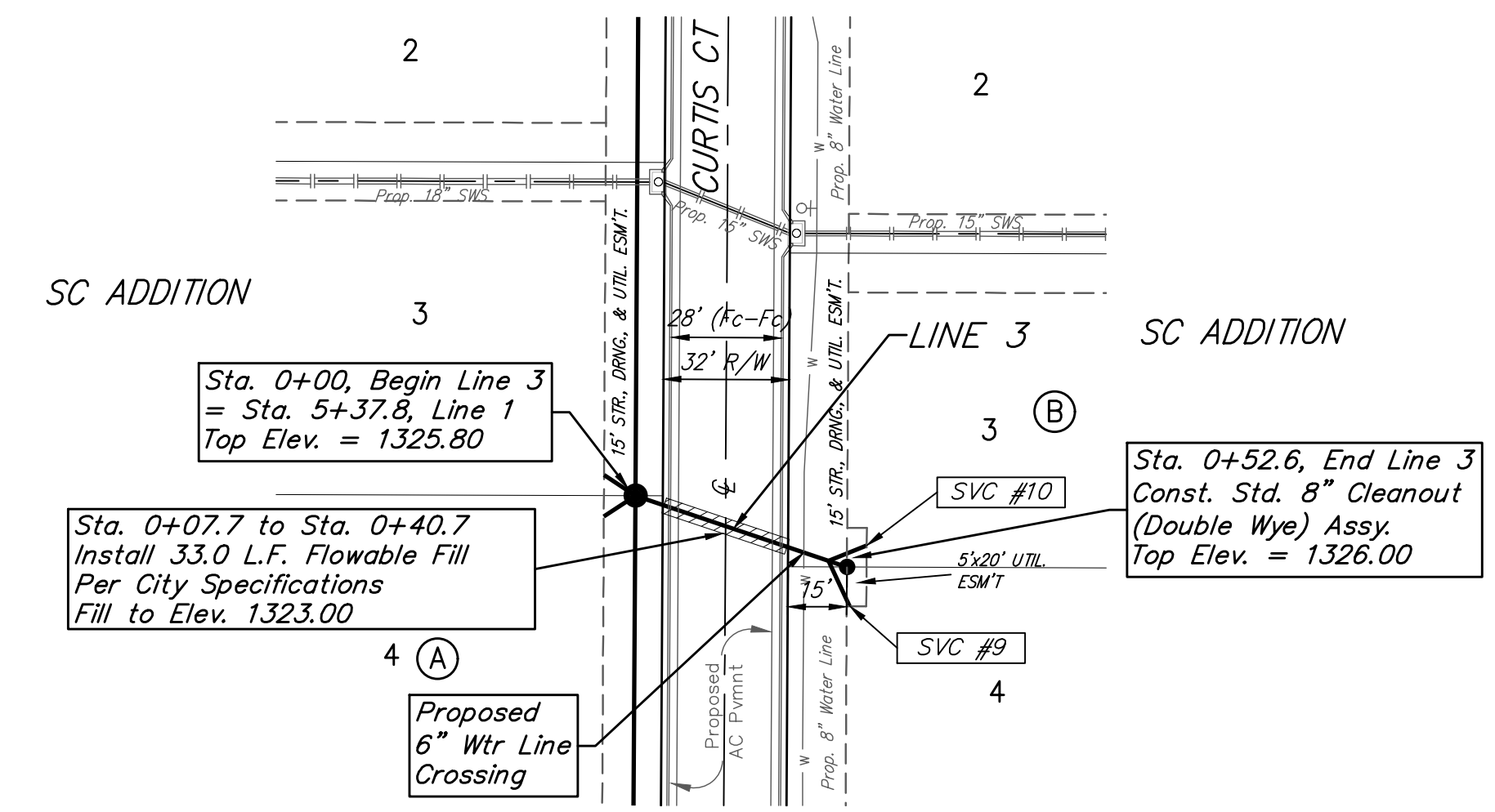
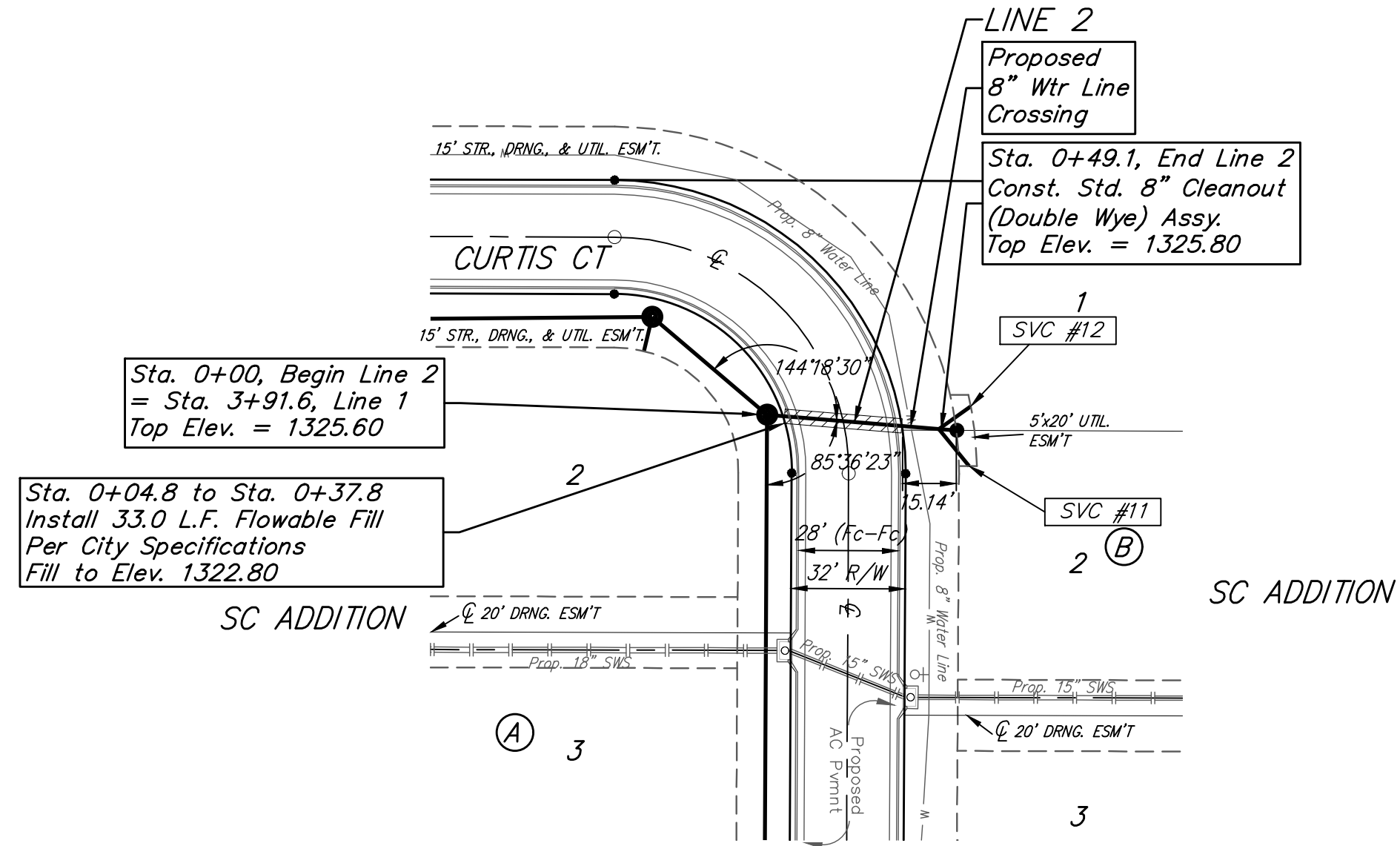
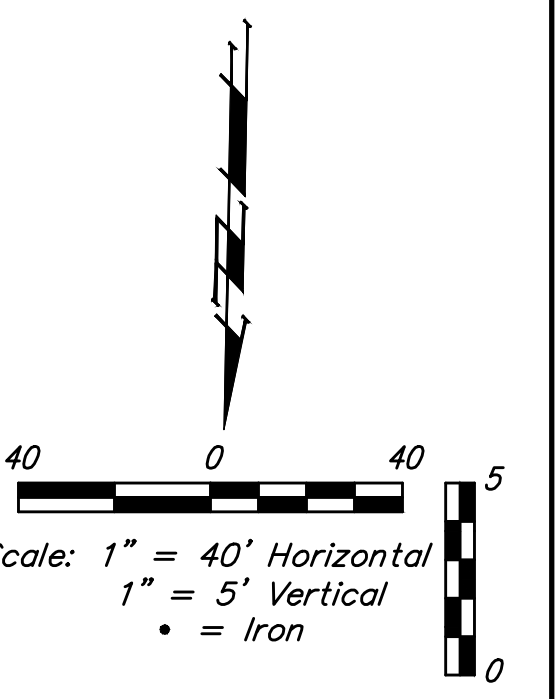
Baughman Company, P.A. 315 Ellis St. Wichita, KS 67211 P 316-262-7271 F 316-262-0149  
 ENGINEERING | SURVEYING | PLANNING | LANDSCAPE ARCHITECTURE

PROJECT NUMBER: 468  
 DESIGN: AEG  
 DRAWN: CDW  
 APPROVED: [Signature]  
 DATE: 6/27/20  
 SCALE: Noted  
 SHEET: 2 OF 15



**BENCHMARK:**  
 "+ cut in the top of curb adjacent to the common lot line of Lots 3-4, BLK D. Sandcrest 3rd Add. Elev = 1327.57 (NAVD88)

"+" cut in the front top center of the westerly curb inlet 131' North of the center line of Curtis Ct. in Curtis St. in Sandcrest Add. Elev = 1321.79 (NAVD88)



SEWER SERVICE TABLE

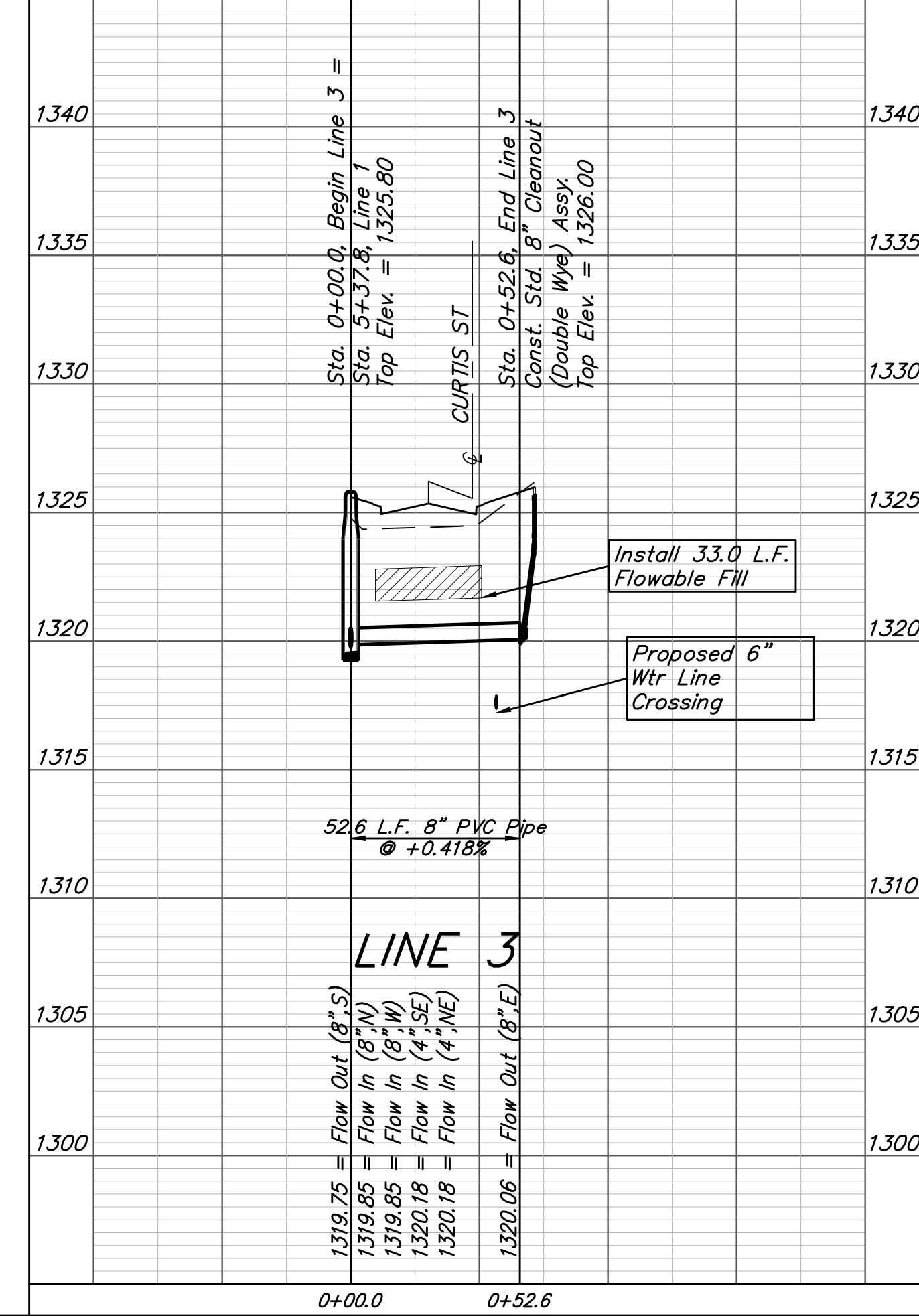
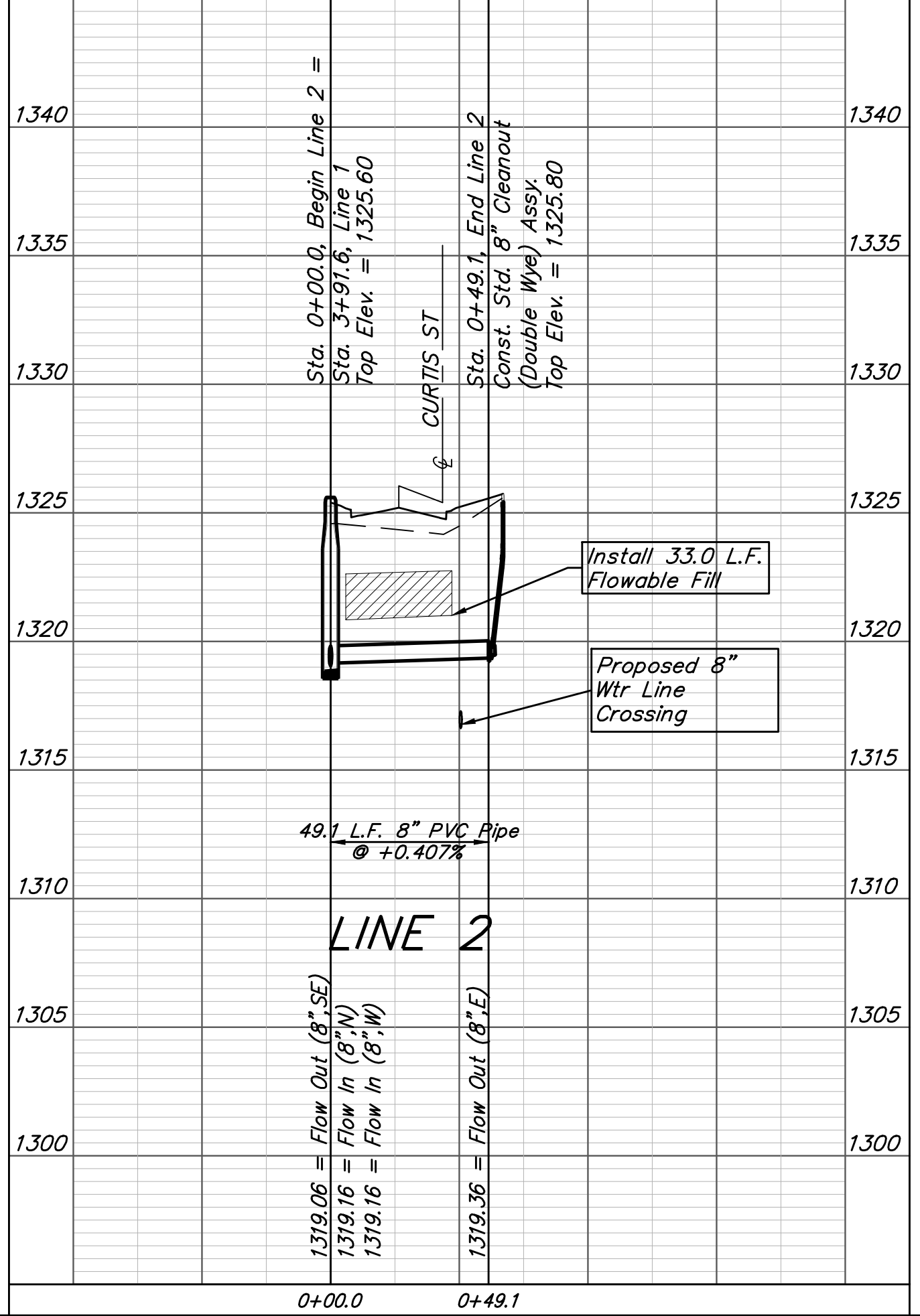
NUMBER	TYPE	LOCATION				FOR INFORMATION ONLY	
		LOT NO.	BLOCK NO.	LINE NO.	STATION/DIRECTION	APPROXIMATE LENGTH 4" PIPE	
						VERTICAL	HORIZONTAL
11	Wye Ext	1	B	2	0+49.1/Rt.	0.0'	11'
12	Wye Ext	2	B	2	0+49.1/Lt.	0.0'	6'

NOTE: If vertical length is greater than zero, vertical riser pipe shall be extended to 2' minimum above ground water elevation and 4' maximum below proposed ground elevation.

SEWER SERVICE TABLE

NUMBER	TYPE	LOCATION				FOR INFORMATION ONLY	
		LOT NO.	BLOCK NO.	LINE NO.	STATION/DIRECTION	APPROXIMATE LENGTH 4" PIPE	
						VERTICAL	HORIZONTAL
9	Wye Ext	4	B	3	0+52.6/Rt.	0.0'	9'
10	Wye Ext	3	B	3	0+52.6/Lt.	0.0'	6'

NOTE: If vertical length is greater than zero, vertical riser pipe shall be extended to 2' minimum above ground water elevation and 4' maximum below proposed ground elevation.



**Baughman** SC Addition  
**LINE 2 & 3**  
 Sanitary Sewer Improvements

Baughman Company, P.A. 315 Ellis St. Wichita, KS 67211 P 316-262-7271 F 316-262-0149  
 ENGINEERING | SURVEYING | PLANNING | LANDSCAPE ARCHITECTURE

PROJECT NUMBER: 468  
 DESIGN: AEG  
 DRAWN: CDW

APPROVED: [Signature]  
 DATE: 6/27/20

SCALE: Noted  
 SHEET: 3 OF 15

E:\Projects\Sandcrest 5th Addition\_19-11-F499\Engineering\Phase 1\SC Plans\SS\SS\_19-11-E429.dwg