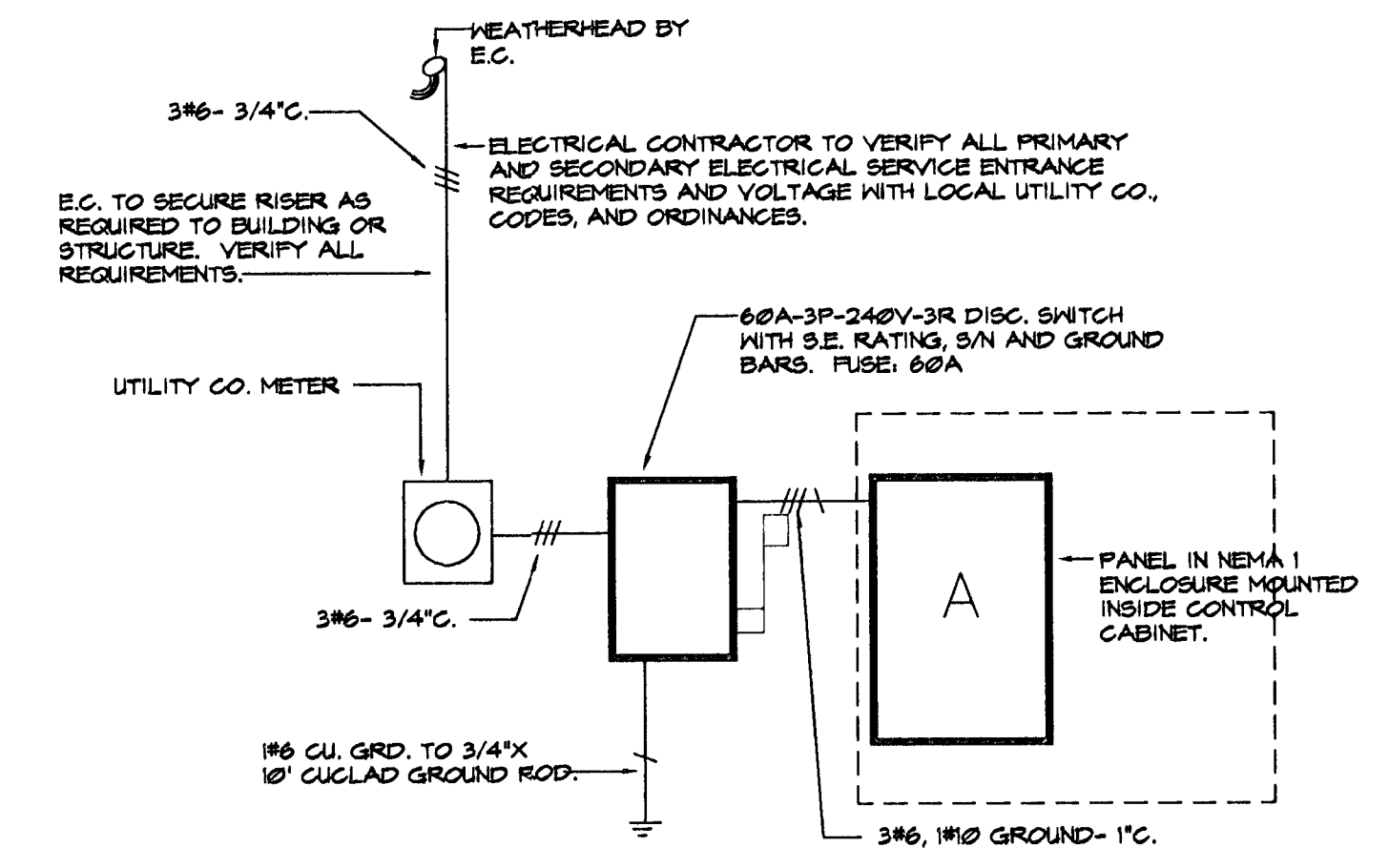


**CONTROL CABINET "A" WIRING DETAIL**

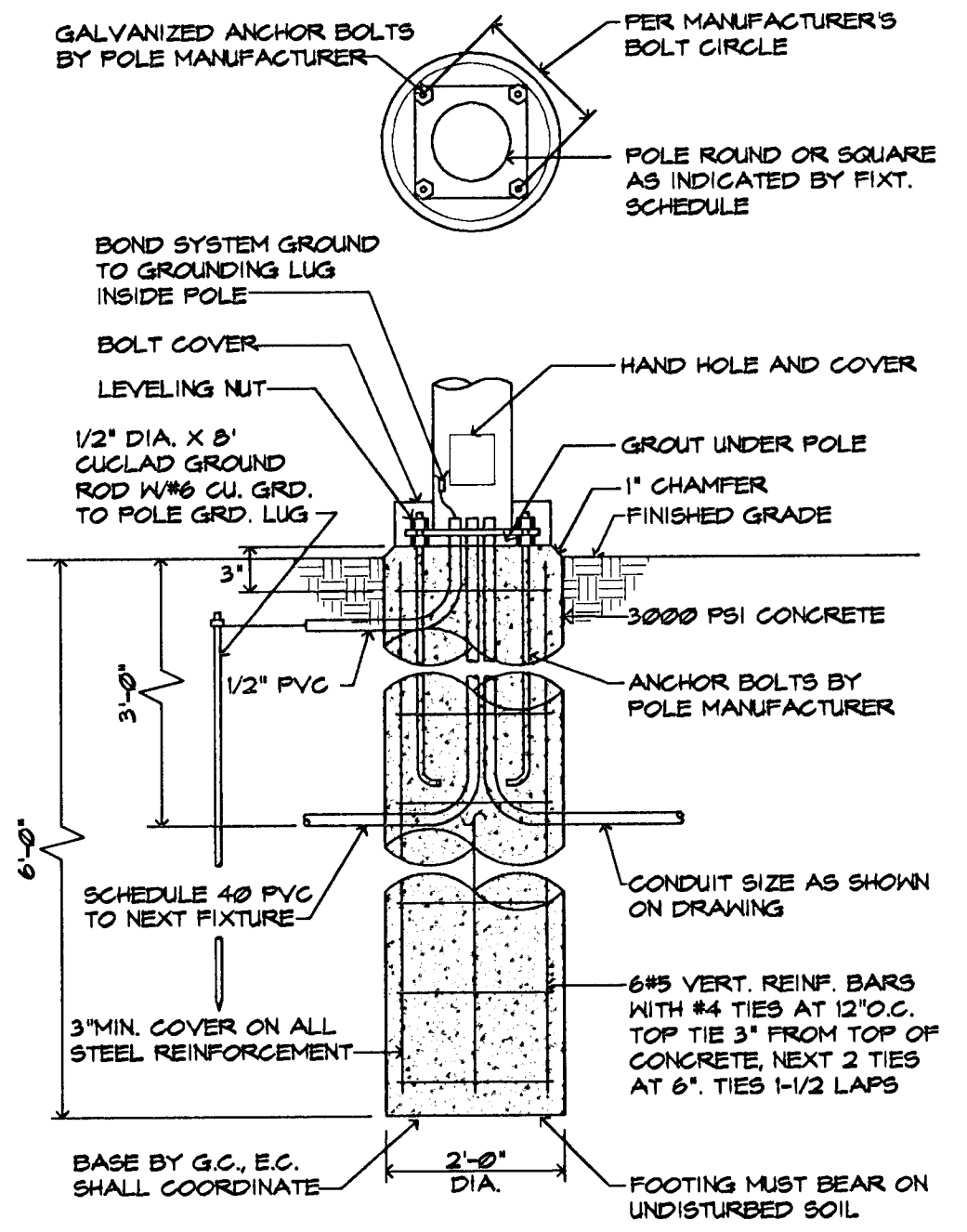
NO SCALE

| PANEL DESIG. | DAYS/10.24V<br>19.24V<br>27/1400V<br>36.44V | MAINS RATING (AMPS)<br>MLO BKR | MOUNTING | BRANCH CIRCUIT BREAKERS (AMPS/POLE) |      |      |      | SUPPLY DEVICE RATING (SH/FUSE) | CIRCUIT NUMBER | FIBER IDENT. |
|--------------|---|--------------------------------|----------|-------------------------------------|------|------|------|--------------------------------|----------------|--------------|
|              |   |                                |          | STATUS                              | 20/2 | 20/2 | 20/2 |                                |                |              |
| A            | •   | 100                            | •        | ACTIVE                              | 2    | 2    |      | 100/100                        | -----          |              |
|              |   |                                |          | SPARE                               | 2    | -    |      |                                |                |              |
|              |   |                                |          | ACTIVE                              |      |      |      |                                |                |              |
|              |   |                                |          | SPARE                               |      |      |      |                                |                |              |
|              |   |                                |          | ACTIVE                              |      |      |      |                                |                |              |
|              |   |                                |          | SPARE                               |      |      |      |                                |                |              |



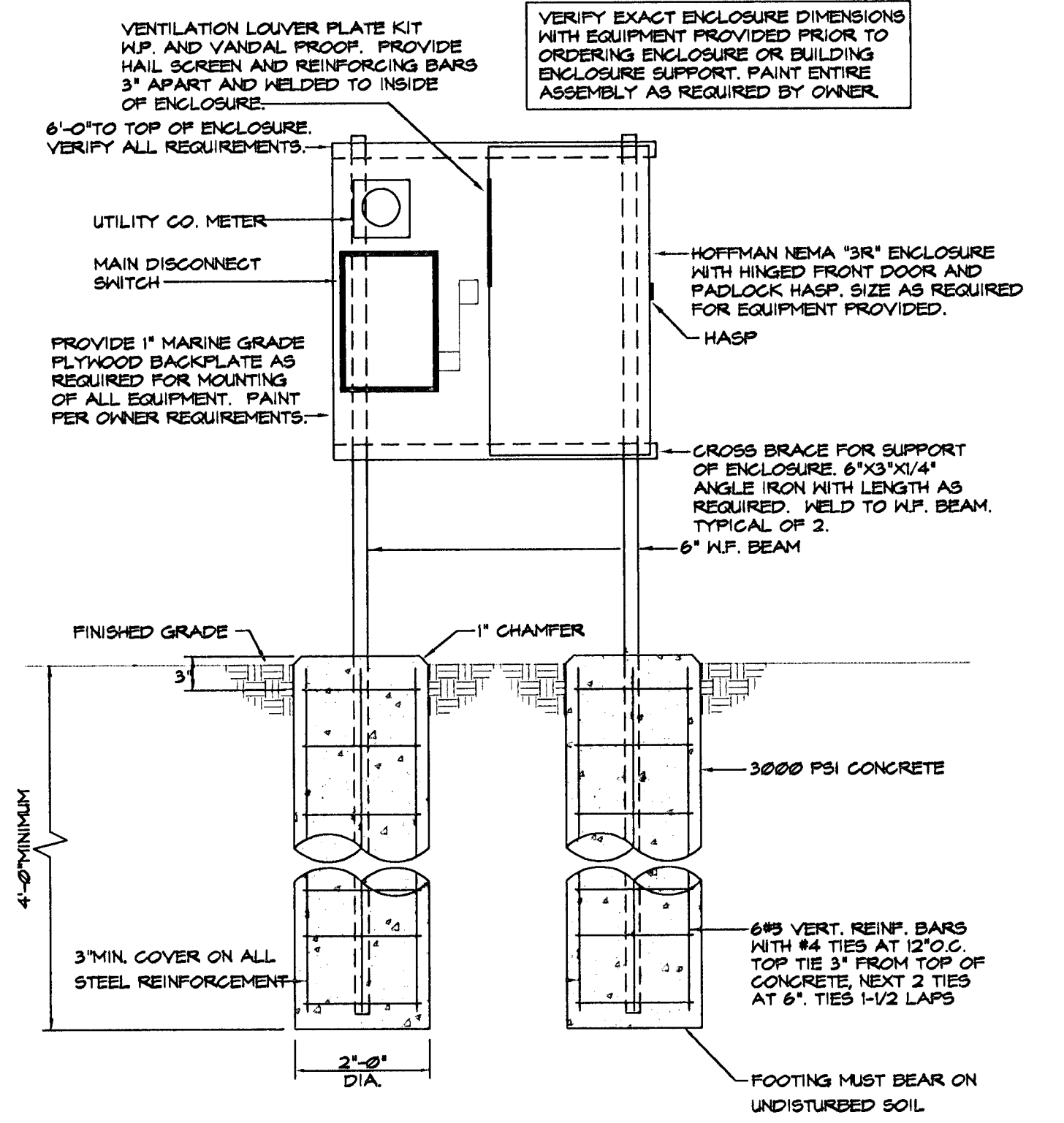
**SERVICE ENTRANCE RISER DIAGRAM - PANEL 'A'**

NO SCALE



**POLE BASE DETAIL**

N.T.S.



**CONTROL PANEL ENCLOSURE DETAIL**

NO SCALE

- GENERAL NOTES:**
1. ALL CONDUITS TO BE ROUTED MINIMUM 30" BELOW GRADE.
  2. E.C. SHALL VISIT JOBSITE PRIOR TO BID AND VERIFY ALL EXISTING CONDITIONS AND REQUIREMENTS.
  3. E.C. TO CLOSELY COORDINATE ELECTRICAL INSTALLATION WITH PAVING AND CONCRETE WORK ON THIS PROJECT.
  4. E.C. TO VERIFY ALL SERVICE ENTRANCE CONNECTIONS REQUIREMENTS WITH K.G.I.E. PRIOR TO BID.
  5. ALL CONDUITS BELOW GRADE TO BE SCH. 40 PVC, WITH STEEL ELLS AND RISERS.
  6. ALL POLE BASES AND CONCRETE WORK ASSOCIATED WITH ELECTRICAL INSTALLATION TO BE THE RESPONSIBILITY OF THE ELECTRICAL CONTRACTOR.

**Wilson Darnell Mann PA**  
 architecture site planning interiors  
 105 N. Washington Wichita, Kansas 67202 316-262-4700

COPYRIGHT © 1993  
 Wilson Darnell Mann, PA

prints issued  
 0-11-94 FIELD CHK

WDM no. 94008

draw LME check

**319 & 325 BROADWAY  
 PARKING LOT**  
 319 & 325 BROADWAY  
 WICHITA, KANSAS

ELECTRICAL  
 DIAGRAMS AND  
 DETAILS

319 & 325 BROADWAY & PARKING LOT DATE: 04/27/94 TIME: 09:43