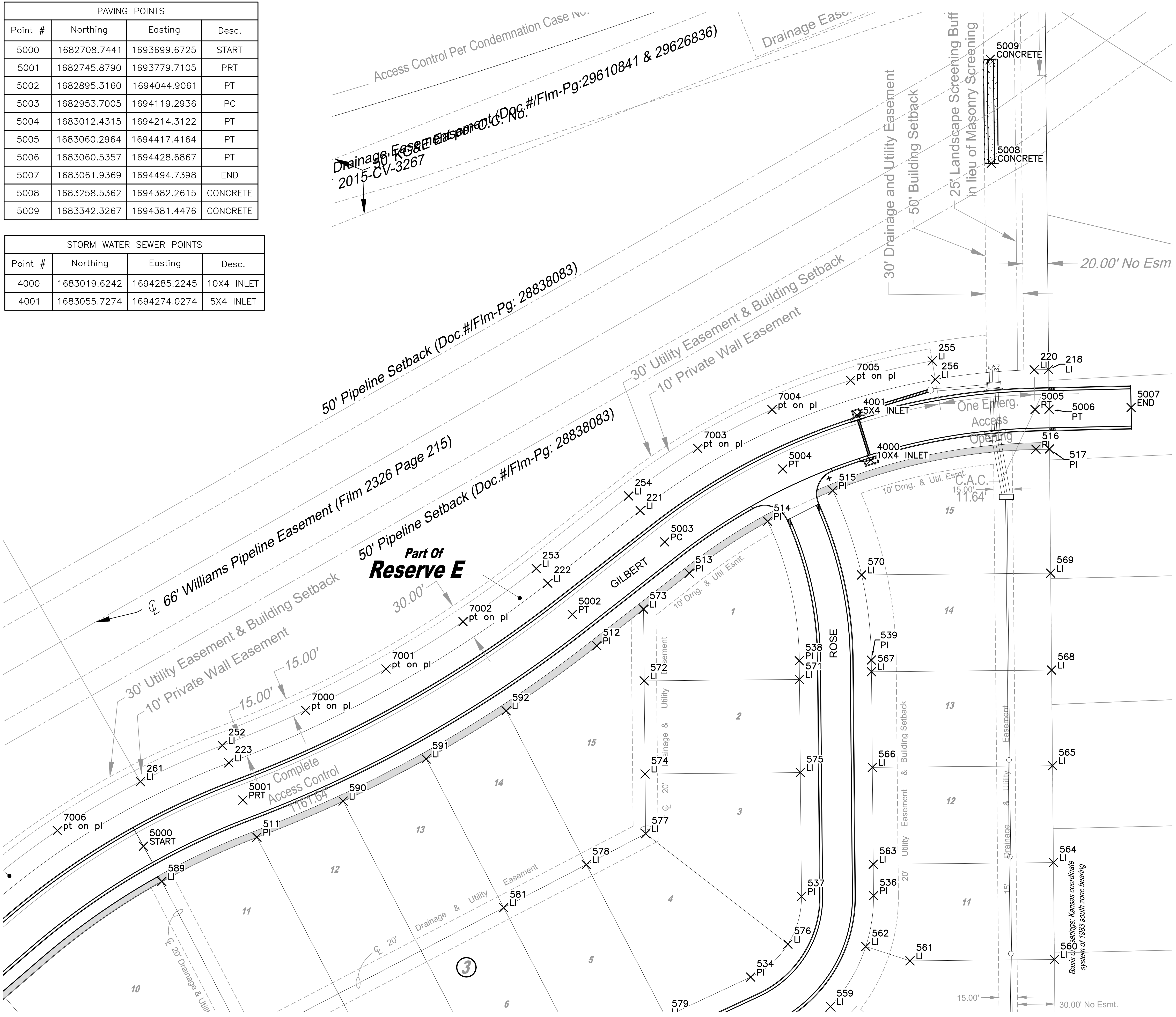


J:\PROJECTS\2017\10\10468_KELLOGG CROSSING_17468_CAD\SHOTS\05_CIVIL\PAVPHASE 2\17468-05-5500.DWG
 PLOTTED: Thursday, June 17, 2021 @ 04:30PM

| PAVING POINTS | | | |
|---------------|--------------|--------------|----------|
| Point # | Northing | Easting | Desc. |
| 5000 | 1682708.7441 | 1693699.6725 | START |
| 5001 | 1682745.8790 | 1693779.7105 | PRT |
| 5002 | 1682895.3160 | 1694044.9061 | PT |
| 5003 | 1682953.7005 | 1694119.2936 | PC |
| 5004 | 1683012.4315 | 1694214.3122 | PT |
| 5005 | 1683060.2964 | 1694417.4164 | PT |
| 5006 | 1683060.5357 | 1694428.6867 | PT |
| 5007 | 1683061.9369 | 1694494.7398 | END |
| 5008 | 1683258.5362 | 1694382.2615 | CONCRETE |
| 5009 | 1683342.3267 | 1694381.4476 | CONCRETE |

| STORM WATER SEWER POINTS | | | |
|--------------------------|--------------|--------------|------------|
| Point # | Northing | Easting | Desc. |
| 4000 | 1683019.6242 | 1694285.2245 | 10X4 INLET |
| 4001 | 1683055.7274 | 1694274.0274 | 5X4 INLET |



| KELLOGG CROSSING PLAT POINTS | | | |
|------------------------------|--------------|--------------|-------|
| Point # | Northing | Easting | Desc. |
| 200 | 1683934.3980 | 1691771.1393 | LI |
| 201 | 1683993.3485 | 1694419.6267 | LI |
| 216 | 1683452.4350 | 1694302.4260 | LI |
| 217 | 1683501.3270 | 1694424.4054 | LI |
| 218 | 1683092.5363 | 1694428.3759 | LI |
| 220 | 1683092.2891 | 1694416.7371 | LI |
| 221 | 1682978.8910 | 1694099.5542 | LI |
| 222 | 1682920.4878 | 1694025.1482 | LI |
| 223 | 1682775.8185 | 1693768.4134 | LI |
| 252 | 1682789.8526 | 1693763.1179 | LI |
| 253 | 1682932.2871 | 1694015.8866 | LI |
| 254 | 1682990.6900 | 1694090.2924 | LI |
| 255 | 1683099.3745 | 1694334.6222 | LI |
| 256 | 1683084.5949 | 1694337.1836 | LI |
| 261 | 1682760.7134 | 1693697.2493 | LI |

| KELLOGG CROSSING ESMT. PLAT POINTS | | | |
|------------------------------------|--------------|--------------|----------|
| Point # | Northing | Easting | Desc. |
| 7000 | 1682818.1275 | 1693830.2005 | pt on pl |
| 7001 | 1682851.4249 | 1693894.9371 | pt on pl |
| 7002 | 1682889.5518 | 1693956.9524 | pt on pl |
| 7003 | 1683029.0087 | 1694145.8548 | pt on pl |
| 7004 | 1683060.1929 | 1694205.7134 | pt on pl |
| 7005 | 1683083.7678 | 1694268.9568 | pt on pl |
| 7006 | 1682721.3323 | 1693630.3751 | pt on pl |

| COUNTRY HOLLOW 2ND PLAT POINTS | | | |
|--------------------------------|--------------|--------------|-------|
| Point # | Northing | Easting | Desc. |
| 511 | 1682715.9394 | 1693791.0076 | PI |
| 512 | 1682870.1441 | 1694064.6641 | PI |
| 513 | 1682928.5473 | 1694139.0702 | PI |
| 514 | 1682970.2921 | 1694202.1551 | PI |
| 515 | 1682995.0839 | 1694254.5899 | PI |
| 516 | 1683028.3036 | 1694418.0957 | PI |
| 517 | 1683028.5351 | 1694428.9975 | PI |
| 521 | 1682450.2660 | 1694304.9437 | PI |
| 534 | 1682603.3571 | 1694188.4660 | PI |
| 535 | 1682550.8074 | 1694213.0123 | PI |
| 536 | 1682668.8886 | 1694287.4123 | PI |
| 537 | 1682668.3476 | 1694229.4149 | PI |
| 538 | 1682858.0520 | 1694227.6452 | PI |
| 539 | 1682858.5931 | 1694285.6427 | PI |
| 553 | 1682362.7063 | 1694117.4921 | LI |
| 554 | 1682480.4903 | 1694062.4745 | LI |
| 555 | 1682512.2312 | 1694130.4268 | LI |
| 556 | 1682394.4472 | 1694185.4444 | LI |
| 557 | 1682426.1881 | 1694253.3967 | LI |
| 558 | 1682543.9721 | 1694198.3791 | LI |



PAVING & INCIDENTAL DRAINAGE FOR
KELLOGG CROSSING ADDITION
 PHASE 2 - GILBERT

©2021 MKEC Engineering All Rights Reserved
 www.mkec.com
 These drawings and their contents, including, but not limited to, all concepts, designs, & ideas are the exclusive property of MKEC Engineering (MKEC), and may not be used or reproduced in any way without the express consent of MKEC.

BUBBLE MAP

| | |
|-------------|-----------------|
| PROJECT NO. | 472-2019-085526 |
| DATE | JUNE 2021 |
| SCALE | 1"=40' |
| DESIGNED | CRM |
| DRAWN | CRM |
| CHECKED | DFL |

| NO. | REVISION | DATE |
|-----|----------|------|
| | | |
| | | |
| | | |