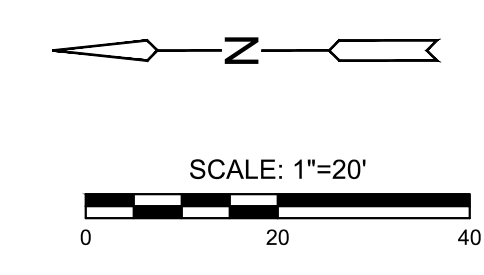
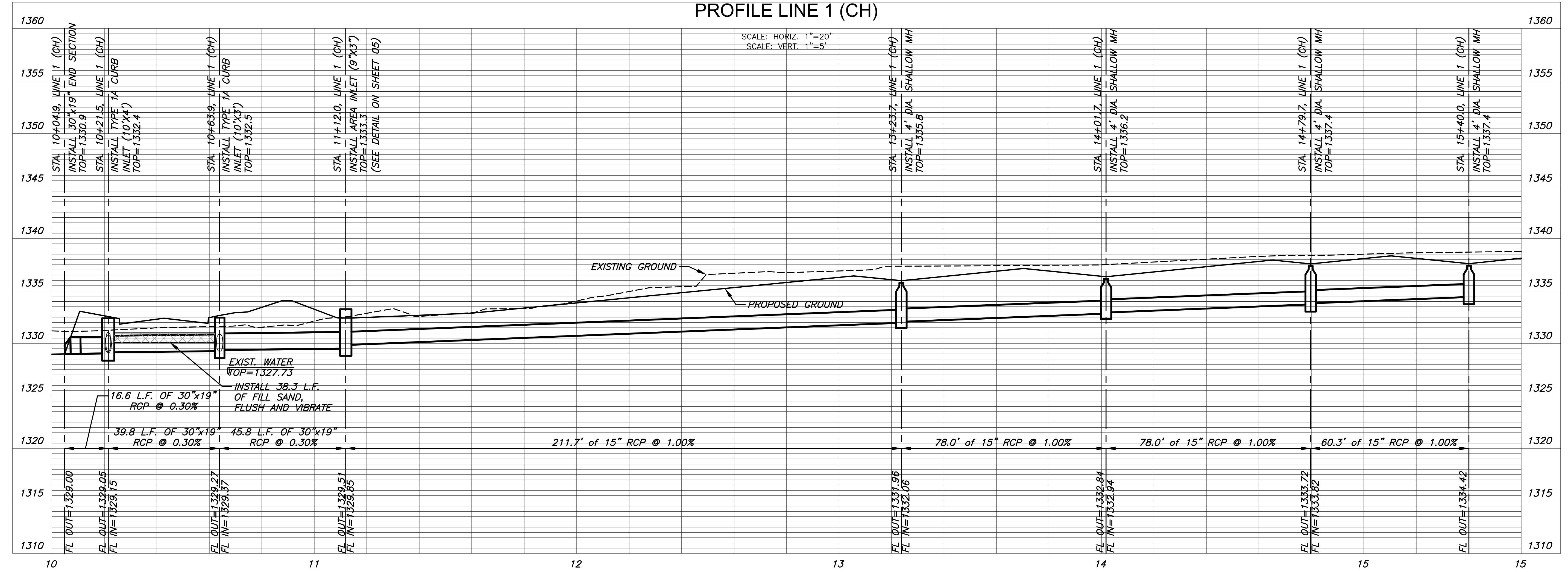


**NOTE:**  
CONTRACTOR TO VERIFY THE DEPTH AND LOCATION OF EXISTING UTILITIES PRIOR TO CONSTRUCTION.  
COX AND AT&T UTILITIES WILL BE DISCONNECTED AND MOVED BY OTHERS.



**PLAN LINE 1 (CH)**  
**PROFILE LINE 1 (CH)**



STORM WATER SEWER AND GRADING FOR  
**COUNTY HOLLOW 2ND ADD.**  
PHASE 2

©2021 MKEC Engineering All Rights Reserved  
These drawings and their contents, including, but not limited to, all concepts, designs, & ideas are the exclusive property of MKEC Engineering (MKEC), and may not be used or reproduced in any way without the express consent of MKEC.

LINE 1 CH	
PROJECT NO.	468-2021-85267
DATE	JUNE 2021
SCALE	1"=20'
DESIGNED	CRM
DRAWN	CRM
CHECKED	DFL
NO.	REVISION DATE
SHEET NO.	06 OF 16