

PROJECT NO.	YEAR	SHEET NO.	TOTAL SHEETS
618-34	1998	7	100

COORDINATE TABLE		
POINT NO.	NORTH COORDINATE	EAST COORDINATE
49	576714.4580	374592.0640
172	576711.7787	374431.2663

- P.I. @ STA. 30+00.00
- FOUND 1/2" IRON PIPE IN THIMBLE
 - CHIS "+" SOUTH TOP 18" CONC. LIGHT BASE NORTH SIDE QUIKTRIP/EAST ENTRANCE
 - 1/2" REBAR 28" WEST OF 12" CEDAR
 - CHIS "+" SW CORNER TRAFFIC SIGNAL POLE CONC. BASE
 - CHIS "+" TRAFFIC SIGNAL POLE BASE
 - CHIS "+" ON CONC. CURB QUIKTRIP PARKING LOT AT P.I. NE BY NW AT SE COR. PARKING LOT
 - 60D NAIL IN SW FACE POWER POLE
- 163.43' NW
142.39' SW
56.94' NE
67.48' SE
95.52' NW
58.45' SE

Scale: 1"=20'

BALTHROP ADDITION

SW 1/4, Sec. 15, T27S, R2E

Cecilia Balthrop Living Trust
MI-8415

MILLER HEIGHTS ADDITION

SAMRA 2ND ADDITION

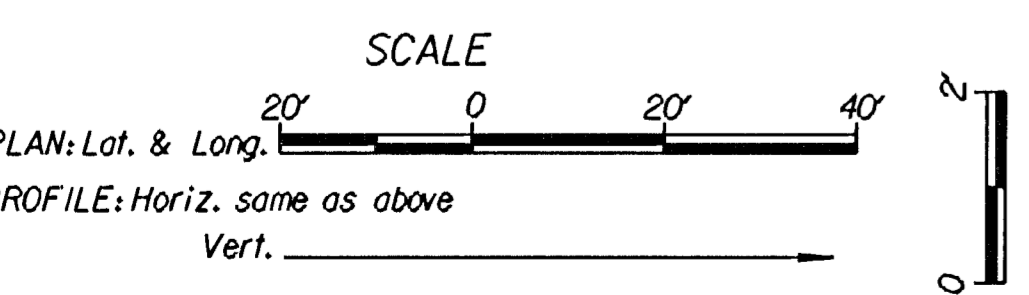
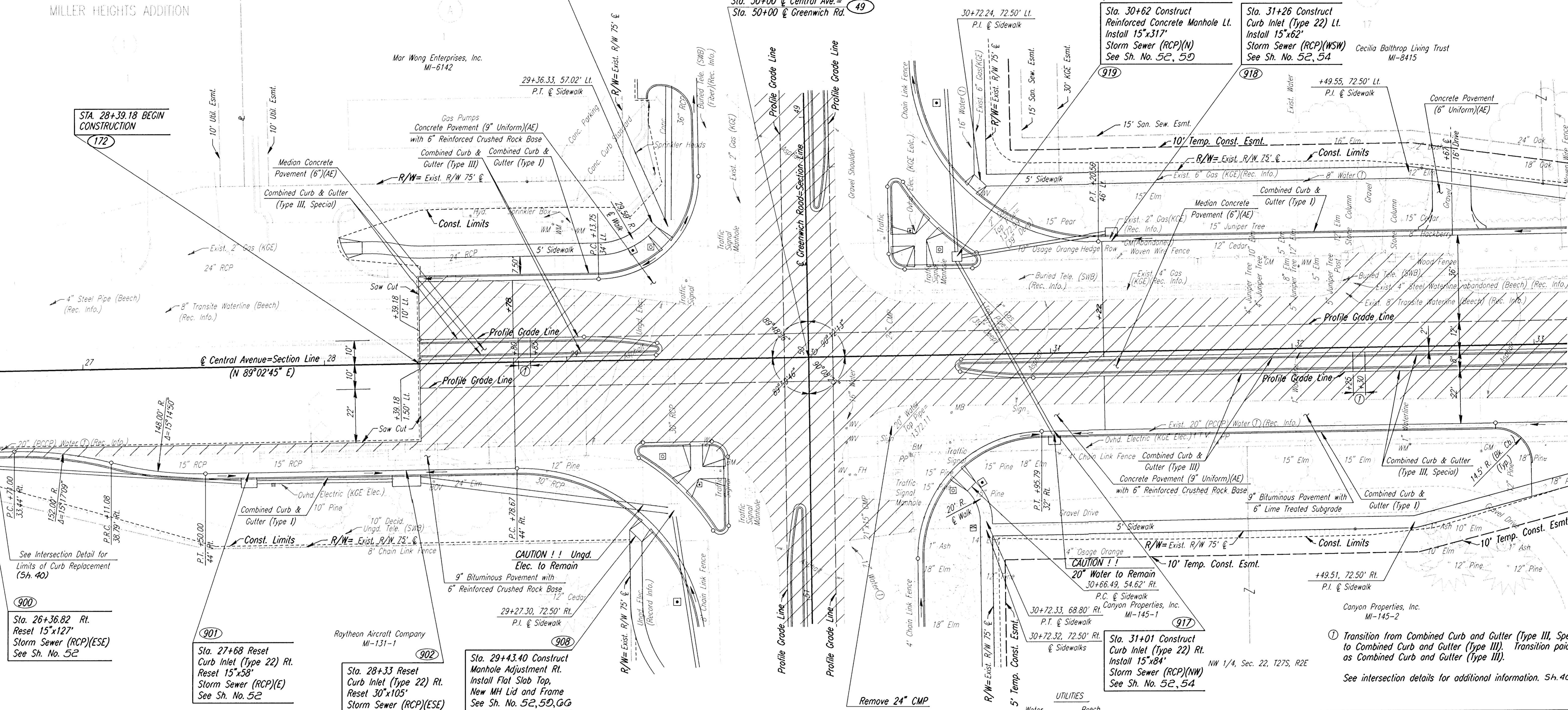
SE 1/4, Sec. 16, T27S, R2E

STA. 28+39.18 BEGIN CONSTRUCTION
(172)

Sta. 30+00 @ Central Ave.=
Sta. 50+00 @ Greenwich Rd. (49)

Sta. 30+62 Construct Reinforced Concrete Manhole Lt. Install 15"x317" Storm Sewer (RCP)(N) See Sh. No. 52, 5D (919)

Sta. 31+26 Construct Curb Inlet (Type 22) Lt. Install 15"x62" Storm Sewer (RCP)(WSW) See Sh. No. 52, 54 (918)



DATUM BM #9: CHIS "G" EAST HEADWALL RCB UNDER GREENWICH, 400' NORTH OF CENTRAL. 382' RT. STA. 30+34 ELEV.=1370.04

BM #GG117: CITY OF WICHITA DISC ON CONC. BASE OF TRAFFIC SIGNAL POLE AT SW CORNER CENTRAL & GREENWICH ROAD. 45' RT. STA. 29+64 ELEV.=1376.42

BM #GG112: 40D STEP NAIL IN NW FACE POWER POLE AT SE CORNER CENTRAL AND GREENWICH ROAD. 40' RT. STA. 30+40 ELEV.=1378.40

- SW COR. SEC. 15, T27S, R2E (49)
@ STA. 30+00.00 CENTRAL AVENUE=
@ STA. 50+00.00 GREENWICH ROAD
- FOUND 1/2" IRON PIPE IN THIMBLE
 - CHIS "+" SOUTH TOP 18" CONC. LIGHT BASE NORTH SIDE QUIKTRIP/EAST ENTRANCE
 - 1/2" REBAR 28" WEST OF 12" CEDAR
 - CHIS "+" SW CORNER TRAFFIC SIGNAL POLE CONC. BASE
 - CHIS "+" TRAFFIC SIGNAL POLE BASE
 - CHIS "+" ON CONC. CURB QUIKTRIP PARKING LOT AT P.I. NE BY NW AT SE COR. PARKING LOT
 - 60D NAIL IN SW FACE POWER POLE
- 163.43' NW
142.39' SW
56.94' NE
67.48' SE
95.52' NW
58.45' SE

① Transition from Combined Curb and Gutter (Type III, Special) to Combined Curb and Gutter (Type III). Transition paid for as Combined Curb and Gutter (Type III).
See intersection details for additional information. Sh. 40+41

SEDCWICK COUNTY BUREAU OF PUBLIC SERVICES			
CENTRAL AVENUE STA. 27+00 TO STA. 33+00			
PROJECT NO. 618-34		SEDCWICK COUNTY	
PROFESSIONAL ENGINEERING CONSULTANTS, P.A. ENGINEERS WICHITA, KANSAS			
Designed by	JPS	Checked by	WDH
Drawn by	BJS/MAF	Date	July 1997
		Job No.	95297-2

1:/1995/95297/002/str27-33.dgn
Drawn by: bjs/maf
Plotted by: maf 8-14-97