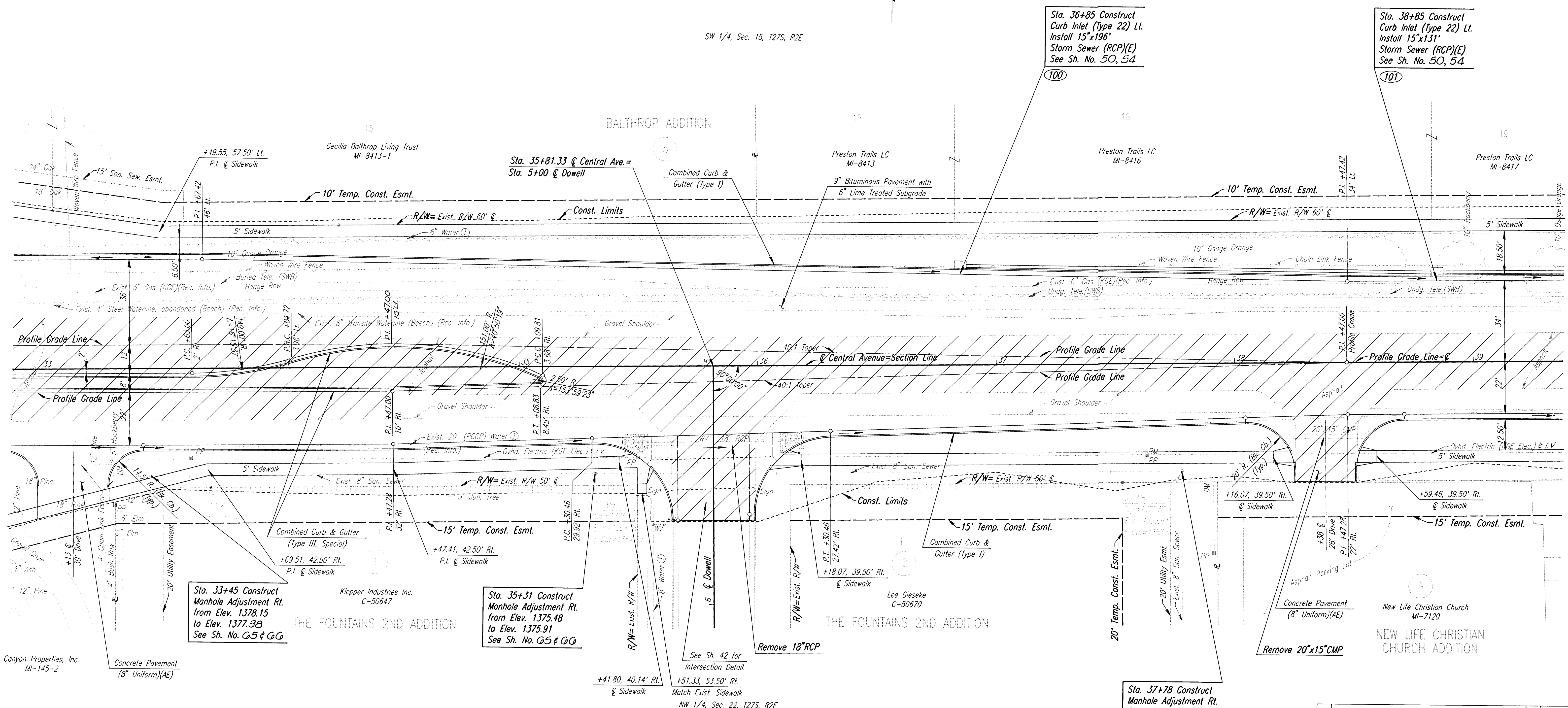


PROJECT NO.	YEAR	SHEET NO.	TOTAL SHEETS
618-34	1998	9	100

SCALE: 1"=20'

SW 1/4, Sec. 15, T27S, R2E



Sta. 33+45 Construct Manhole Adjustment Rt. from Elev. 1378.15 to Elev. 1377.38 See Sh. No. G5 & GG

Sta. 35+31 Construct Manhole Adjustment Rt. from Elev. 1375.48 to Elev. 1375.91 See Sh. No. G5 & GG

Sta. 36+85 Construct Curb Inlet (Type 22) Lt. Install 15"x196" Storm Sewer (RCP)(E) See Sh. No. 50, 54

Sta. 38+85 Construct Curb Inlet (Type 22) Lt. Install 15"x131" Storm Sewer (RCP)(E) See Sh. No. 50, 54

Sta. 37+78 Construct Manhole Adjustment Rt. from Elev. 1372.52 to Elev. 1372.29 See Sh. No. G5 & GG

**UTILITIES**

- Water
- Water Ⓣ
- Power
- Gas
- Telephone
- Cable TV
- San. Sewer
- Beech
- Wichita Water Dept.
- Kansas Gas & Electric
- Kansas Gas & Electric
- Southwestern Bell
- Multimedia Cablevision
- Sedgwick County

BM #GG111: RR SPIKE IN SW FACE POWER POLE AT NW CORNER TO NEW LIFE CHRISTIAN CHURCH 39' RT. STA. 37+63 ELEV.=1374.02

Revisions		By	Date
SEDGWICK COUNTY BUREAU OF PUBLIC SERVICES			
<b>CENTRAL AVENUE</b>			
STA. 33+00 TO STA. 39+00			
PROJECT NO. 618-34		SEDGWICK COUNTY	
<b>PROFESSIONAL ENGINEERING CONSULTANTS, P.A.</b>			
WICHITA, KANSAS			
Designed by	JPS	Checked by	WDH
Drawn by	BJS/MAF	Date	JULY 1997
		Job No.	95297-2

i:\1995\95297\002\str\33-39.dgn  
 Drawn by: djs/mar  
 Plotted by: mar 8-14-97