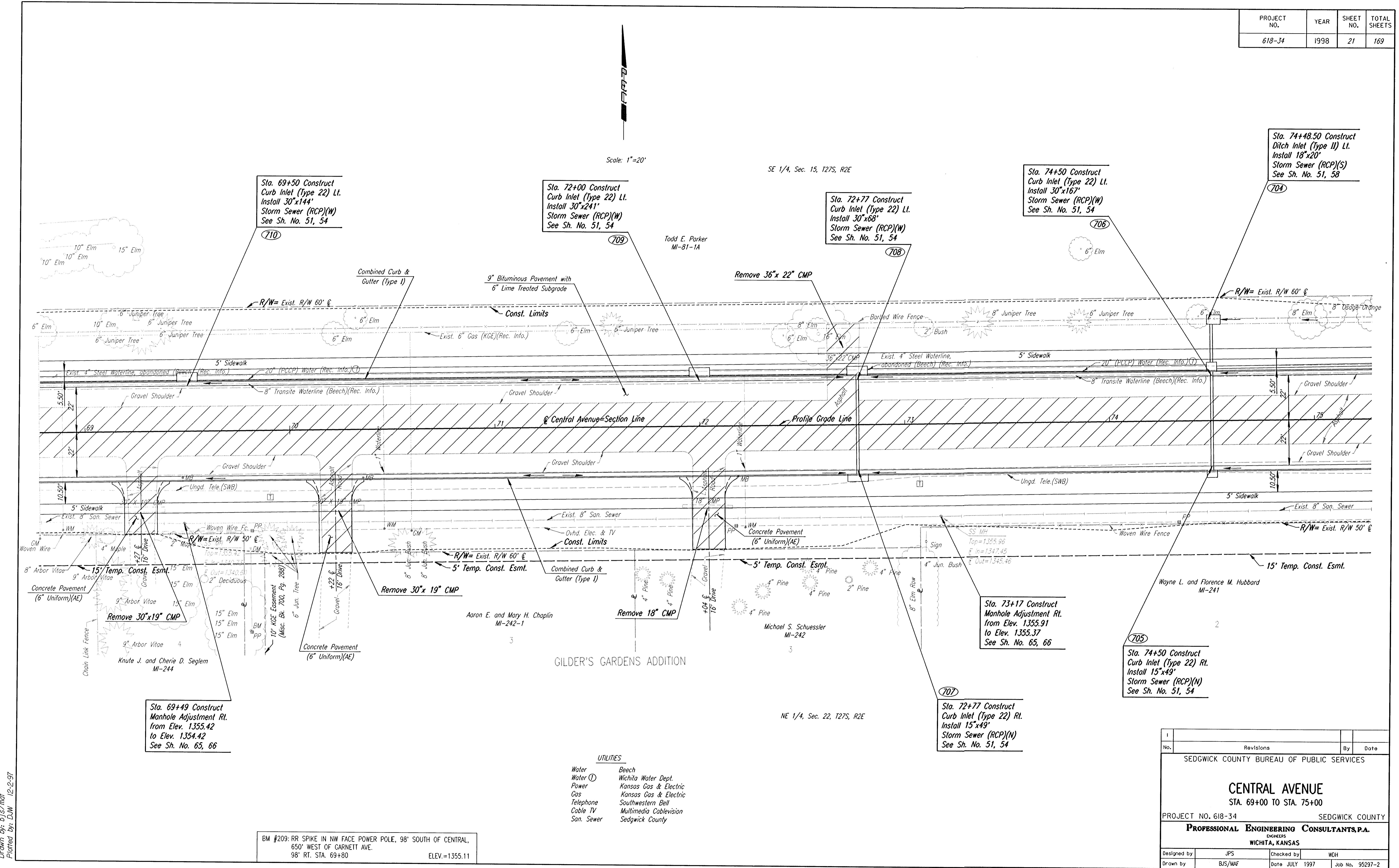


PROJECT NO.	YEAR	SHEET NO.	TOTAL SHEETS
618-34	1998	21	169

Scale: 1"=20'

SE 1/4, Sec. 15, T27S, R2E

NE 1/4, Sec. 22, T27S, R2E



Sta. 69+50 Construct Curb Inlet (Type 22) Lt. Install 30"x144' Storm Sewer (RCP)(W) See Sh. No. 51, 54

Sta. 72+00 Construct Curb Inlet (Type 22) Lt. Install 30"x241' Storm Sewer (RCP)(W) See Sh. No. 51, 54

Sta. 72+77 Construct Curb Inlet (Type 22) Lt. Install 30"x68' Storm Sewer (RCP)(W) See Sh. No. 51, 54

Sta. 74+50 Construct Curb Inlet (Type 22) Lt. Install 30"x167' Storm Sewer (RCP)(W) See Sh. No. 51, 54

Sta. 74+48.50 Construct Ditch Inlet (Type II) Lt. Install 18"x20' Storm Sewer (RCP)(S) See Sh. No. 51, 58

Sta. 73+17 Construct Manhole Adjustment Rt. from Elev. 1355.91 to Elev. 1355.37 See Sh. No. 65, 66

Sta. 69+49 Construct Manhole Adjustment Rt. from Elev. 1355.42 to Elev. 1354.42 See Sh. No. 65, 66

- UTILITIES**
- Water
  - Water ①
  - Power
  - Gas
  - Telephone
  - Cable TV
  - San. Sewer
  - Beech
  - Wichita Water Dept.
  - Kansas Gas & Electric
  - Kansas Gas & Electric
  - Southwestern Bell
  - Multimedia Cablevision
  - Sedgwick County

BM #209: RR SPIKE IN NW FACE POWER POLE, 98' SOUTH OF CENTRAL, 650' WEST OF GARNETT AVE. 98' RT. STA. 69+80 ELEV.=1355.11

i:/1995/95297/002/stf69-75.dgn  
Drawn by: bjs/maf  
Plotted by: DW 12-2-97

No.	Revisions	By	Date

SEDGWICK COUNTY BUREAU OF PUBLIC SERVICES

**CENTRAL AVENUE**  
STA. 69+00 TO STA. 75+00

PROJECT NO. 618-34 SEDGWICK COUNTY

**PROFESSIONAL ENGINEERING CONSULTANTS, P.A.**  
ENGINEERS  
WICHITA, KANSAS

Designed by	JPS	Checked by	WDH
Drawn by	BJS/MAF	Date	JULY 1997
		Job No.	95297-2