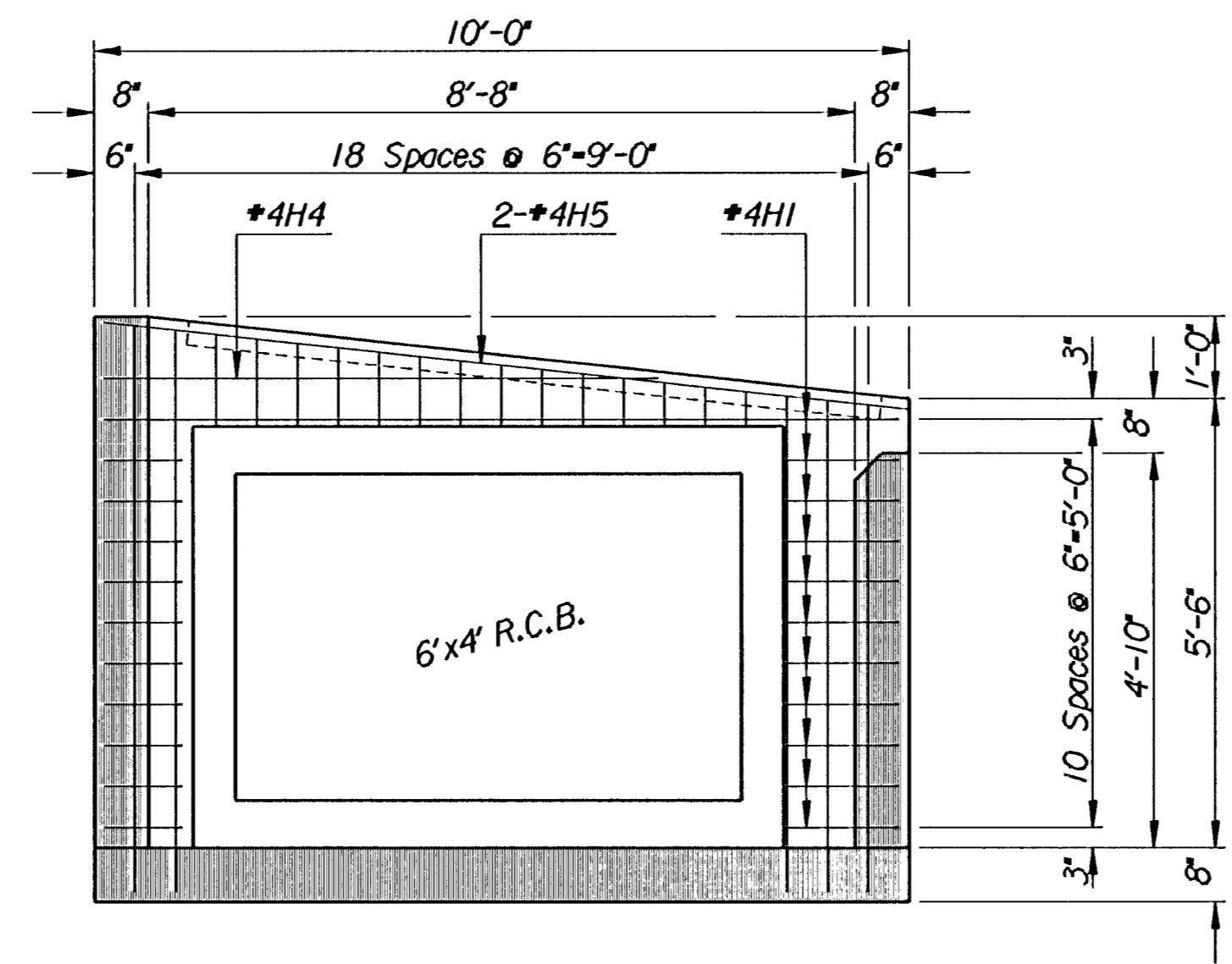
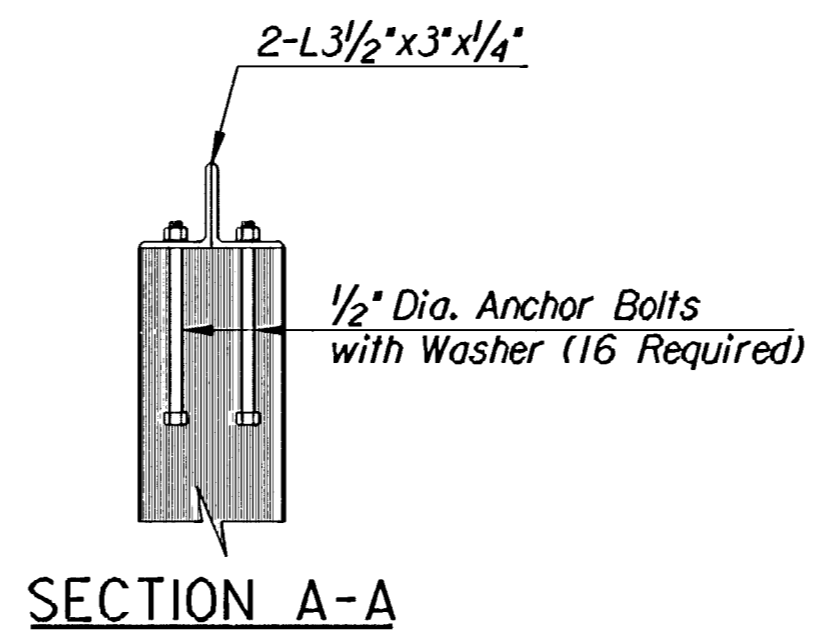


PLAN



EXTERIOR WALL ELEVATION

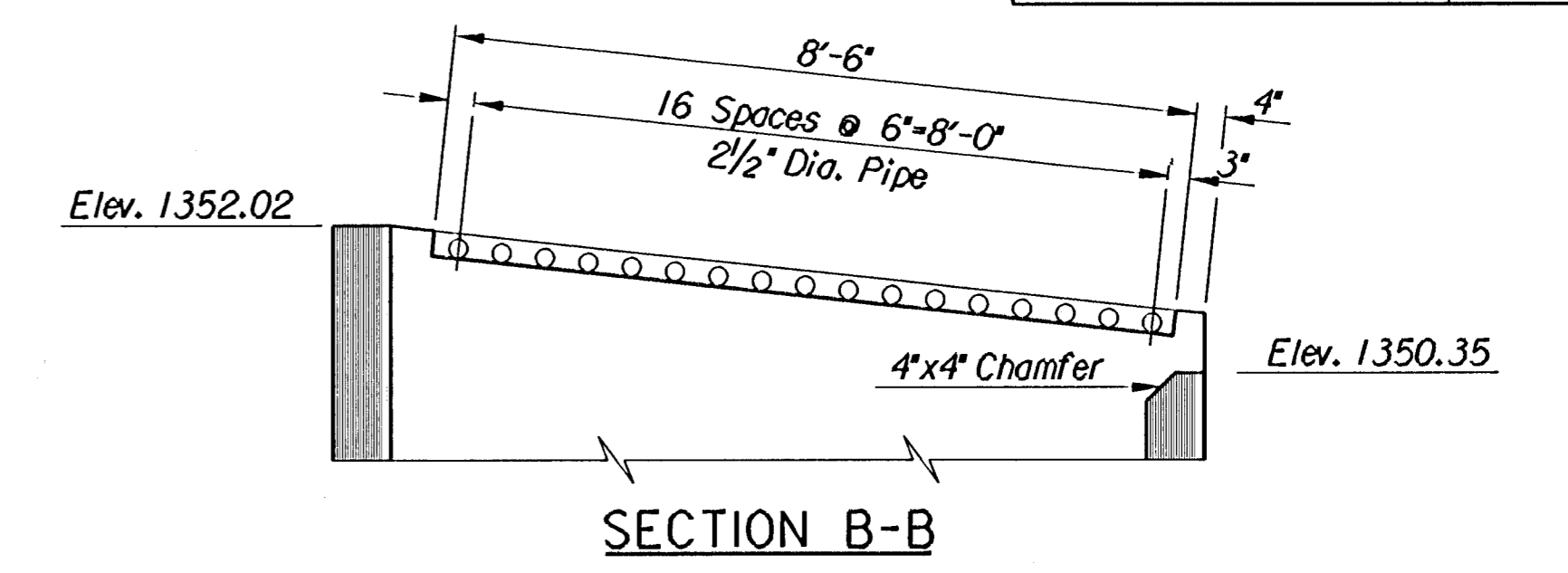


SECTION A-A

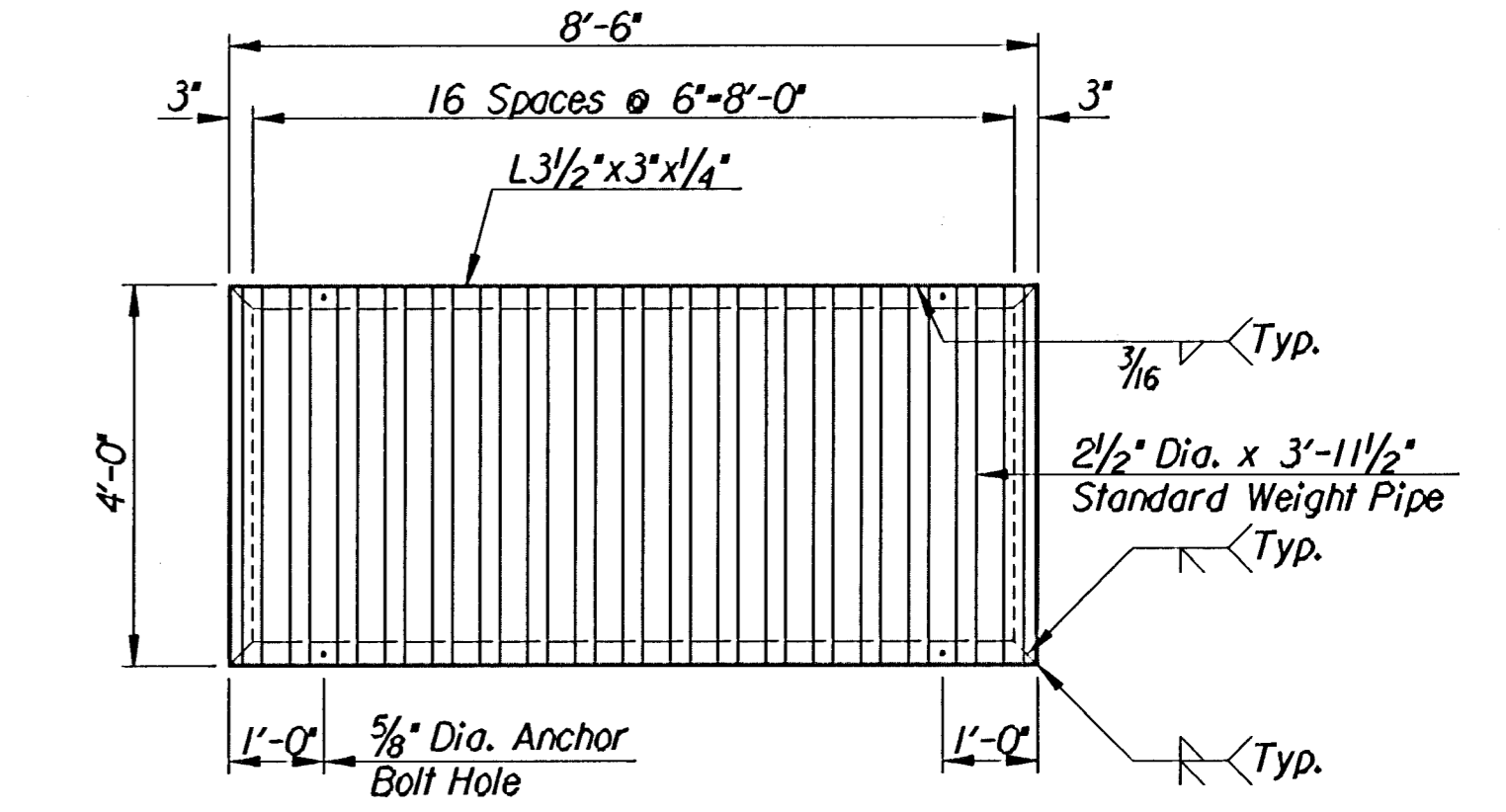
SUMMARY OF QUANTITIES (FOR INFORMATION ONLY)

Item	Quantity	Unit
Class A Concrete	12.9	C.Y.
Reinforcing Steel (Gr. 60)	1,658	Lbs.
Structural Steel	2,098	Lbs.
Handrail	35.67	Ft.

See Sh. No. 57 for Handrail Details.



SECTION B-B



GRATE DETAIL (TYPE F)

REINFORCING STEEL

Mark	No.	Size	Length
H1	34	#4	9'-9"
H2	10	#4	16'-10"
H3	13	#4	16'-10"
H4	2	#4	7'-0"
H5	3	#4	9'-9"
H6	3	#4	8'-9"
H7	3	#4	4'-0"
H8	18	#4	4'-9"
S1	20	#4	16'-10"
S2	35	#4	9'-9"
V1	38	#4	X
V2	35	#4	6'-11"
V3	35	#4	5'-3"
V4	27	#4	X
V5	27	#4	X

General Notes

Class A Concrete shall be used throughout. At the Contractor's option, Class A Concrete (AE) may be used. Bevel all exposed edges with a 3/4" triangular molding or an approved edging tool. Deductions in concrete quantities have been made for pipe openings.

Reinforcing Steel shall be a minimum Grade 60 ASTM A615.

All dimensions relative to placement of reinforcing are to the centerline of bars unless otherwise noted. All Clearances are 1/2" unless otherwise noted.

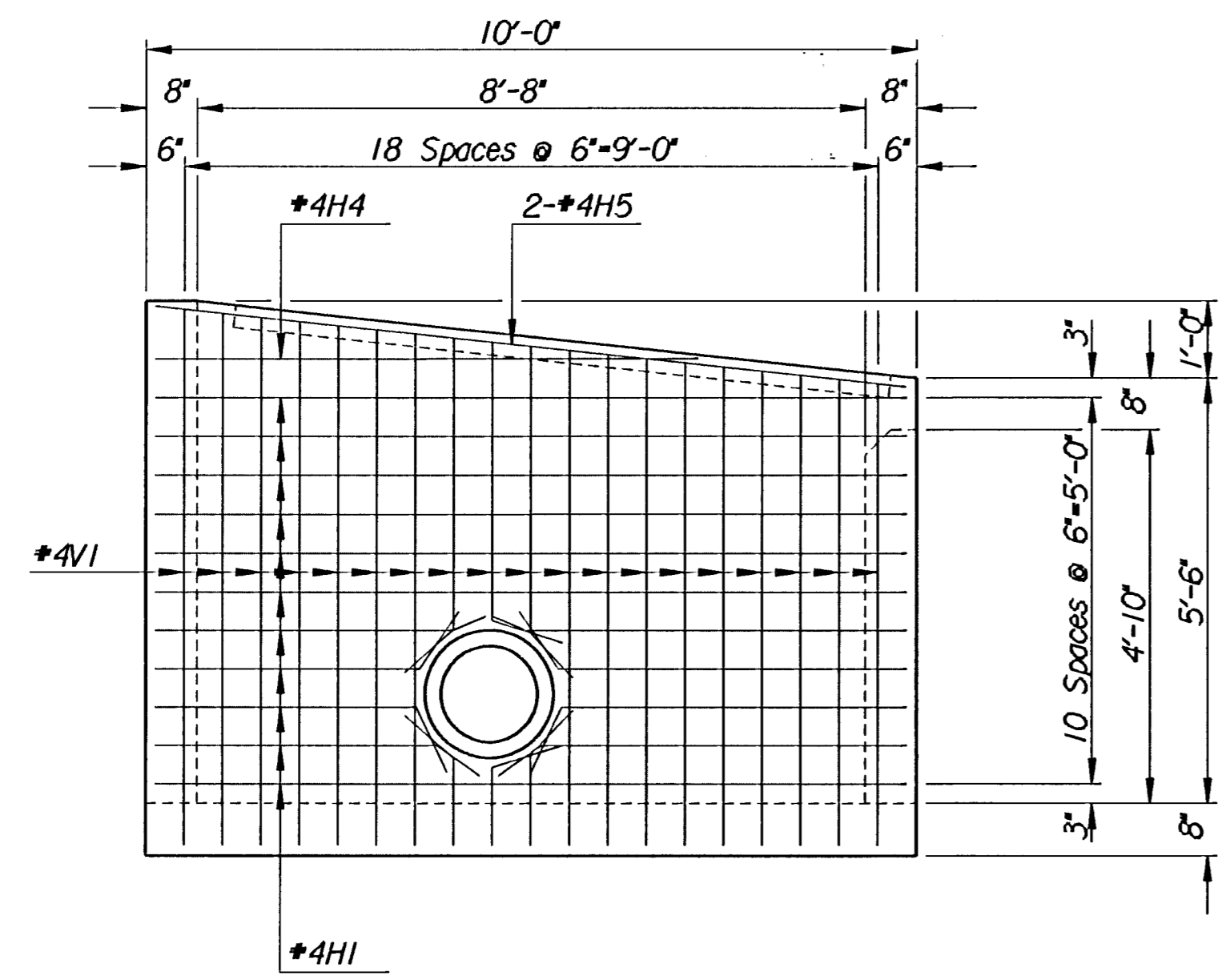
Pipes will enter and leave the Inlet at various positions. Field bend or cut reinforcing to clear pipes.

Inlet invert shall be shaped with unreinforced Class A Concrete as shown in various examples on Standard No. 633.

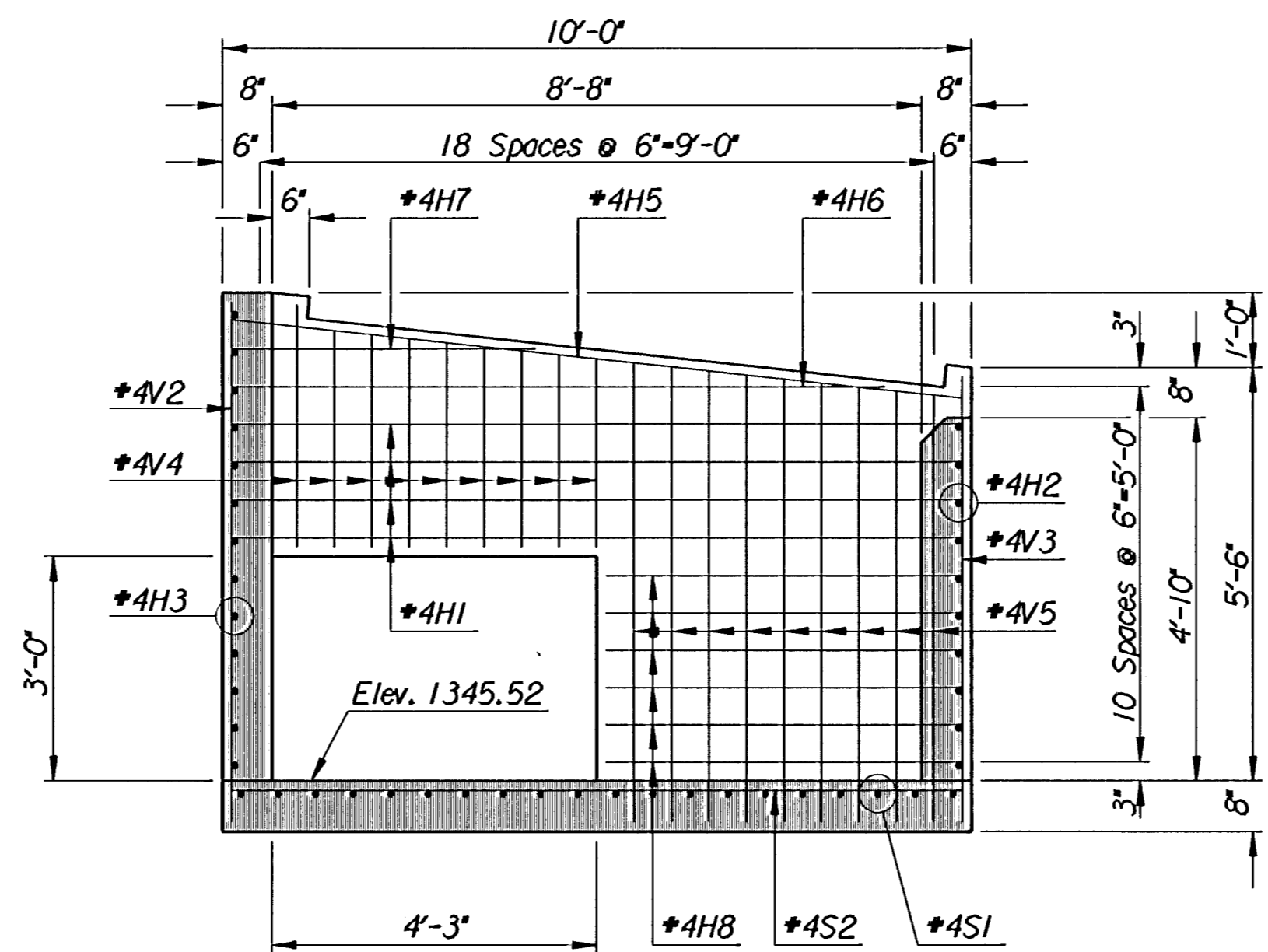
Ditch Inlet Type I shall be measured and paid for at the contract unit price bid per each. This shall be considered full compensation for all excavation, backfilling, materials, labor, equipment, tools and Incidentals necessary to complete the work.

The grate shall be fabricated from standard or commercial grade structural steel and black steel pipe. The unit shall be hot dipped, galvanized after fabrication, in accordance with ASTM A123 except the weight of coating shall average not less than 2.0 ounces per square foot of actual surface and no individual test shall show less than 1.8 ounces of coating per square foot of actual surface area.

- \* V1 Incr. from 6'-0" to 6'-11" by 5/8" Cut 2 Each Length
- V4 Incr. from 2'-9" to 3'-2" by 5/8" Cut 3 Each Length
- V5 Incr. from 6'-0" to 6'-5" by 5/8" Cut 3 Each Length



EXTERIOR WALL ELEVATION



SECTION B-B

1	Revisions	By	Date
No.			
SEDGWICK COUNTY BUREAU OF PUBLIC SERVICES  <b>DITCH INLET TYPE I</b>  PROJECT NO. 618-34 SEDGWICK COUNTY <b>PROFESSIONAL ENGINEERING CONSULTANTS, P.A.</b> ENGINEERS WICHITA, KANSAS			
Designed by	P.D.F.	Checked by	P.D.F.
Drawn by	W.L.L.	Date	June 1997 Job No. 95297-2