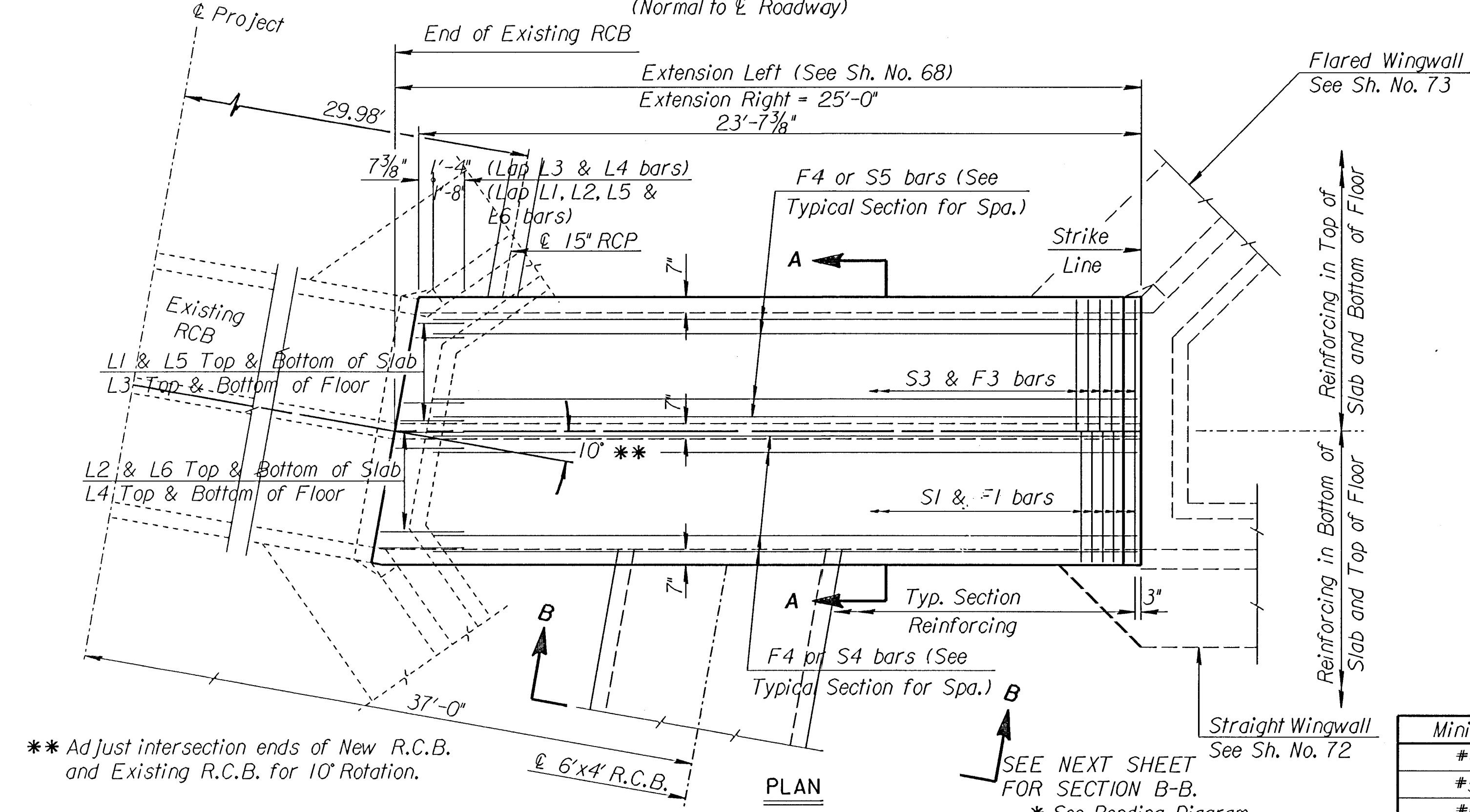
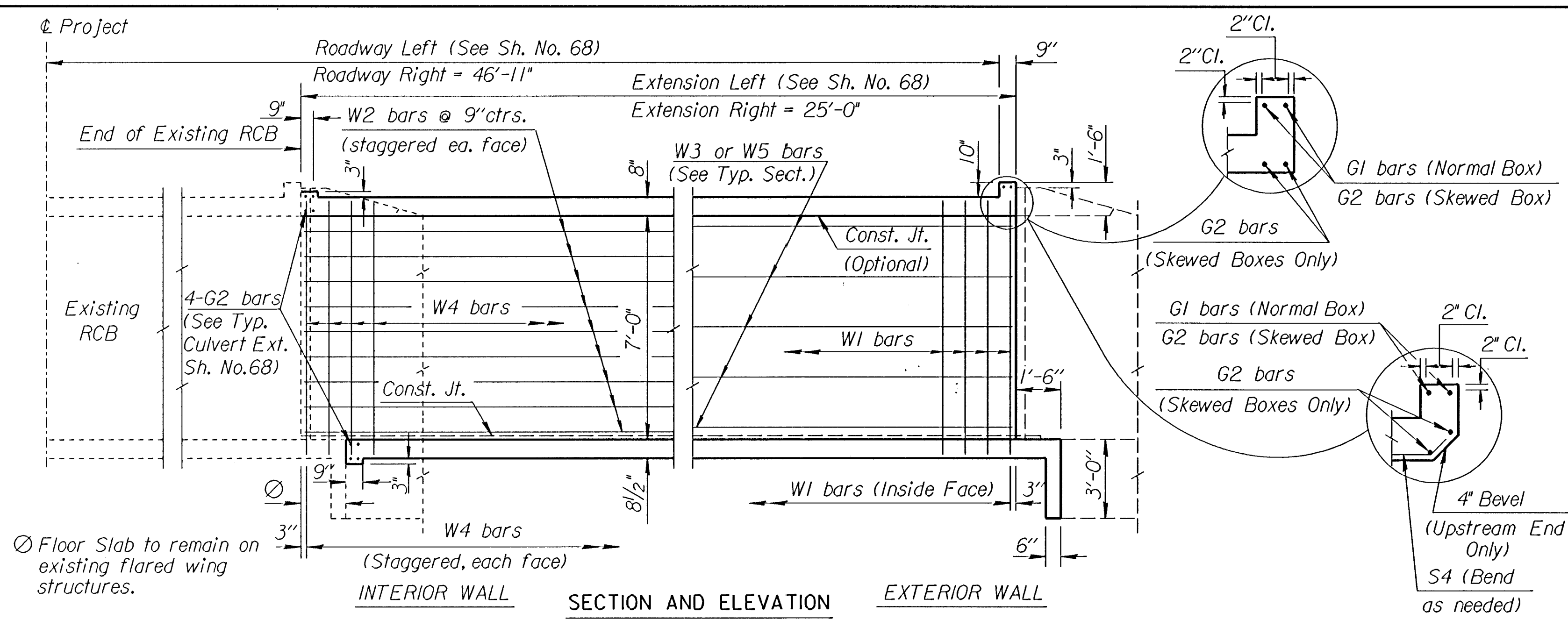


PROJECT NO.	YEAR	SHEET NO.	TOTAL SHEETS
618-34	1998	70	169

VERSION: 5.1.0 COMPILED: 03/01/95

DESIGN	DATE	DATE	DATE	DATE	DATE
DETAIL	DATE	DATE	DATE	DATE	DATE
QUANTITIES	DATE	DATE	DATE	DATE	DATE
REVISIONS	DATE	DATE	DATE	DATE	DATE

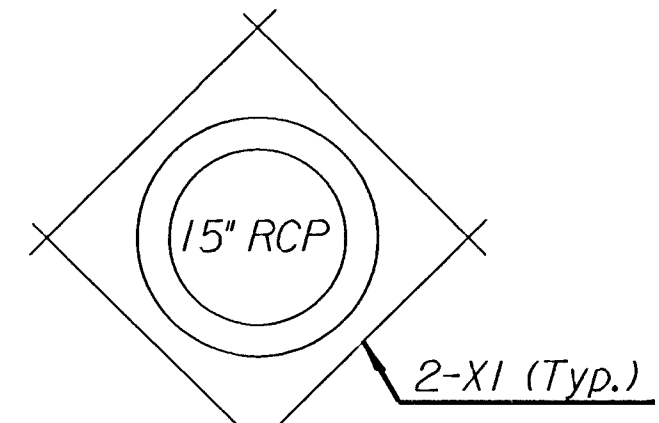
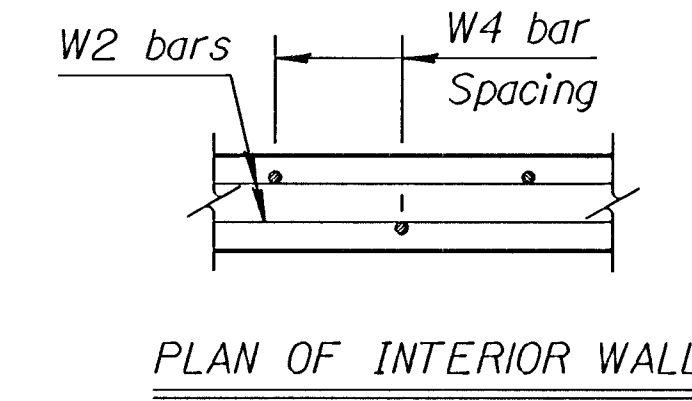
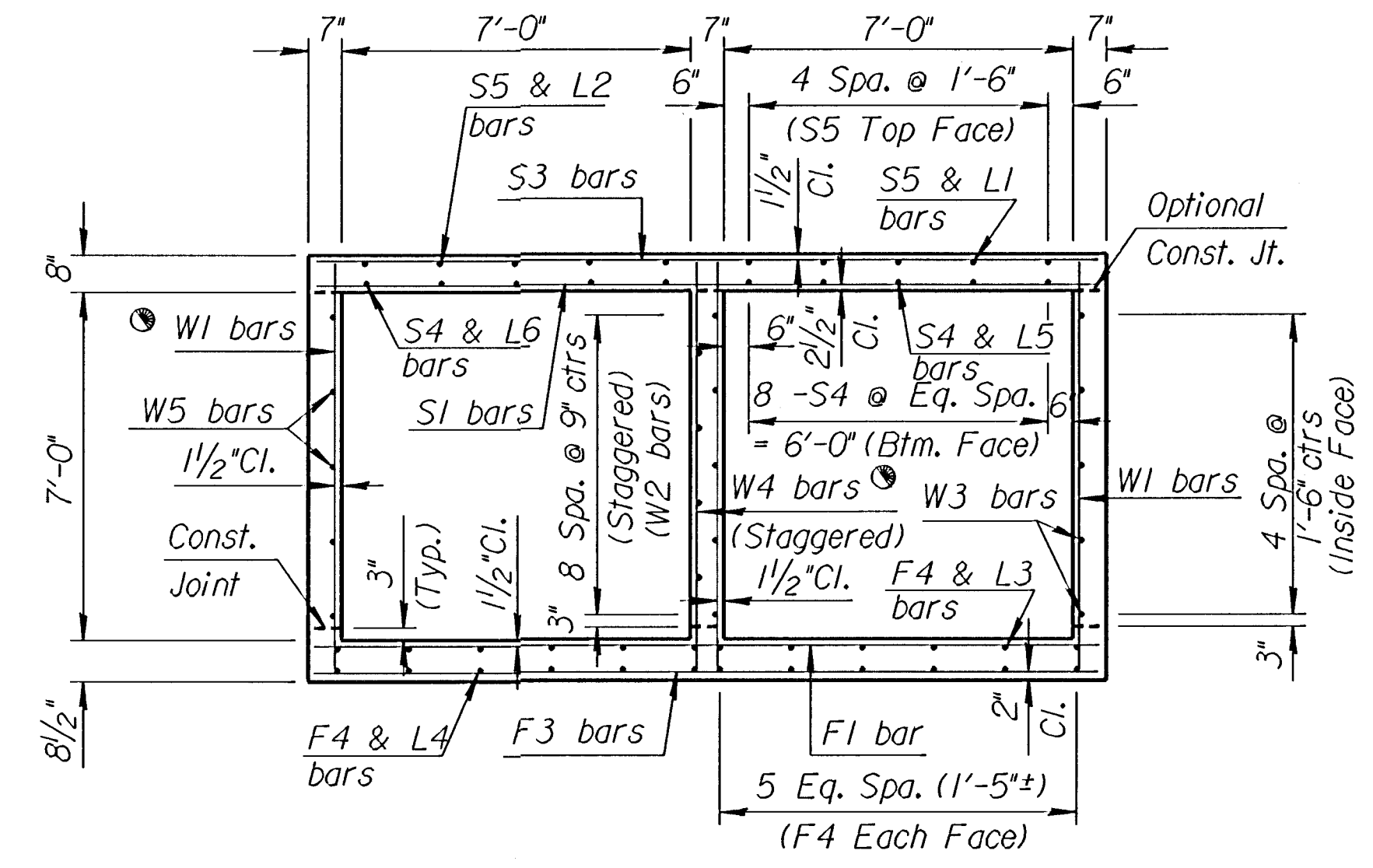
DGN File: \\1995\95297\002\7\text\rcb.dgn
P. offed by: DJW 11-5-97 View=



** Adjust intersection ends of New R.C.B. and Existing R.C.B. for 10° Rotation.

SEE NEXT SHEET FOR SECTION B-B.
* See Bending Diagram

See RCB Auxiliary Details for Optional Splice.
See Standard No. 80, Sheet No. 77 for additional details.



Ext. Rt. (East Wall Only)
Ext. Rt. (West Wall-See Next Sheet Section B-B)

Bar Size	Minimum Splice Length
#4	1'-4"
#5	1'-8"
#6	2'-0"

Note: Use only cast-in-place construction at this location

Class AAA Concrete	44.0 C.Y.
Class AAA Concrete (AE)	0.0 C.Y.
Reinforcing Steel (Gr. 60)	6590 Lbs.
Reinforcing Steel (Epoxy Coated)	0 Lbs.

Flow Line Elev.	Crown Gr. Elev.	Design Fill Ht.	Skew	Wings	Scour Apron	Soil Saver	Granular Backfill	Concrete			Reinf. Steel (Gr. 60)		
								Barrel (Cu.Yds.)	Wings (Cu.Yds.)	Total (Cu.Yds.)	Barrel (Lbs.)	Wings (Lbs.)	Total (Lbs.)
Ext.Rt. 1340.50	1349.89	2	0	FLARED LT. STRAIGHT RT.	NO	NO	NO	30.71	13.31	44.02	5655.02	935.18	6590.20

F1		L1		F3		F4		S1		L2		S3		S4		S5		L3		L4		L5																			
Size	Spa.	No.	Length	Size	Spa.	No.	Length	Size	Spa.	No.	Length	Size	Spa.	No.	Length	Size	Spa.	No.	Length	Size	Spa.	No.	Length	Size	Spa.	No.	Length														
6	7"	41	15'-5"	5	-	5	*	5	6"	48	15'-5"	4	24	21'-6"	6	7"	41	15'-5"	5	-	5	*	5	6"	48	15'-5"	5	16	21'-6"	4	10	21'-6"	4	12	*	4	12	*	5	8	*
K1		K2		W1		W2		W3		W4		G1		G2		L6		W5		W6		X1																			
Size	Spa.	No.	Length	Size	Spa.	No.	Length	Size	Spa.	No.	Length	Size	Spa.	No.	Length	Size	Spa.	No.	Length	Size	Spa.	No.	Length	Size	Spa.	No.	Length														
6	7"	8	*	5	6"	10	*	4	9"	67	8'-1"	4	-	9	24'-8"	4	5	23'-4"	4	9"	34	8'-1"	5	2	15'-5"	5	8	15'-8"	5	-	8	*	4	5	26'-0"	6	2	12'-0"	6	8	4'-6"

GENERAL NOTES

LOADING: HS20-44 AASHTO Specifications, 1983 Edition.

UNIT STRESSES: Class AAA Concrete; $f'c = 4,000$ p.s.i.
Reinforcing Steel; $f_y = 60,000$ p.s.i.

FILL HEIGHT: Unless otherwise noted, the Design Fill Height is measured from the riding surface at the culvert and shall include the surfacing.

CONCRETE: Class AAA Concrete shall be used throughout. Bevel all exposed edges with a 3/4 inch triangular moulding. Where Class AAA Concrete (AE) is specified, it shall be placed in the top slab above the Construction Joint.

REINFORCING: All reinforcing shall conform to ASTM A615, Grade 60. All dimensions relative to reinforcing steel shall be to centerline of bar unless otherwise noted.

EXCAVATION: Excavation shall not be paid for directly but shall be subsidiary to Class AAA Concrete.

SEAL COURSE: A Seal Course shall be required by the Engineer. The Seal Course shall be unreinforced Concrete (Commercial Grade) to a minimum depth of 3 inches or as determined by the Engineer. Concrete for the seal course shall be paid for at the unit price set for Concrete for Seal Course.

FOUNDATION STABILIZATION: Foundation Stabilization may be required as directed by the Engineer. The depth of Foundation Stabilization shall be determined by the Engineer. Foundation Stabilization shall be paid for at the determined Unit Price set for Foundation Stabilization. See Auxiliary Details.

QUANTITIES: The quantities shown in the Culvert Summary include apron and/or soil saver quantities when their construction is required by the plans. Payment for additional quantities that result from including seal course and/or floating apron, as a change in original plans, shall be made at the Unit Price bid for the various items involved.

GRANULAR BACKFILL (WINGWALLS): Special backfill procedures may be required at the direction of the Engineer. See Auxiliary Details Sheet.

STRIKE LINE: Wingwalls and that portion of the RCB outside the Strike Line shall be constructed level. Footing for wingwalls shall be constructed with the culvert floor. See wingwall detail sheet.

NO.	DATE	REVISIONS	BY	APP'D

KANSAS DEPARTMENT OF TRANSPORTATION
Sta. 59+09
DOUBLE 7' x 7' RCB
25'-0" EXT. RT. (10 DEGREE ROTATION)

BR 2-07-07 SEDGWICK CO.
KENNETH F. HURST
DESIGNED BY: TRACED
CHECKED BY: TRACE CK.