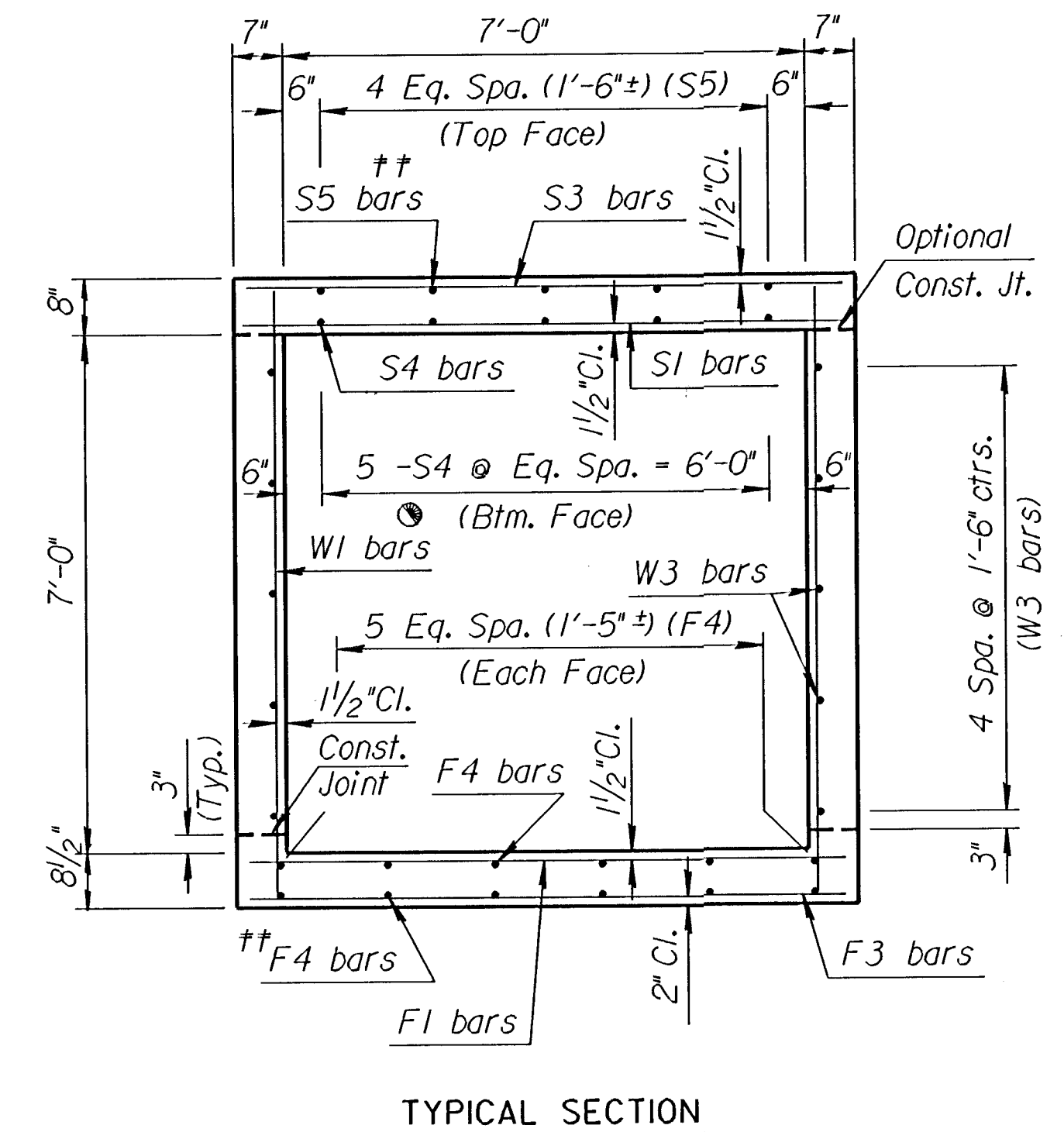
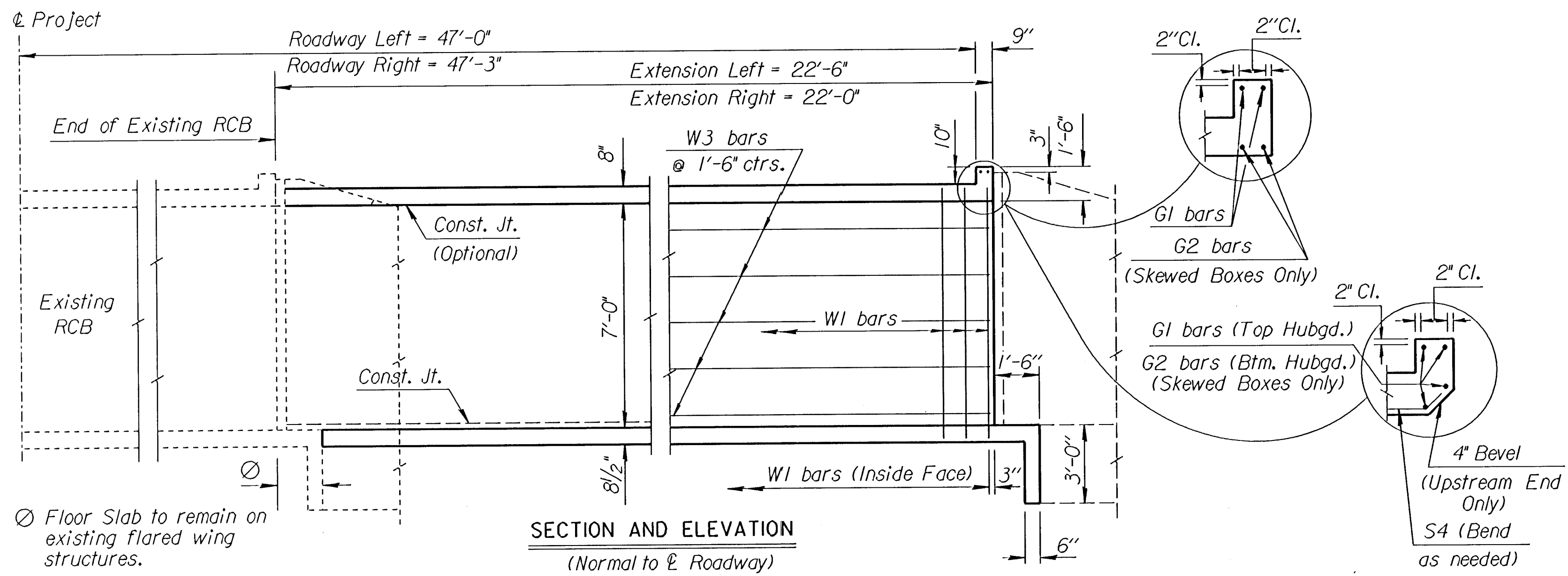


DESIGN	DATE	DESIGN	DATE	DETAIL	DATE	QUANTITIES	DATE	TRACING	DATE	RETRACTED	DATE

DGN File: i:\1995\95297\002\T1.rcb.dgn  
 Plotted by: DW 11-5-97

PROJECT NO.	YEAR	SHEET NO.	TOTAL SHEETS
618-34	1998	74	169



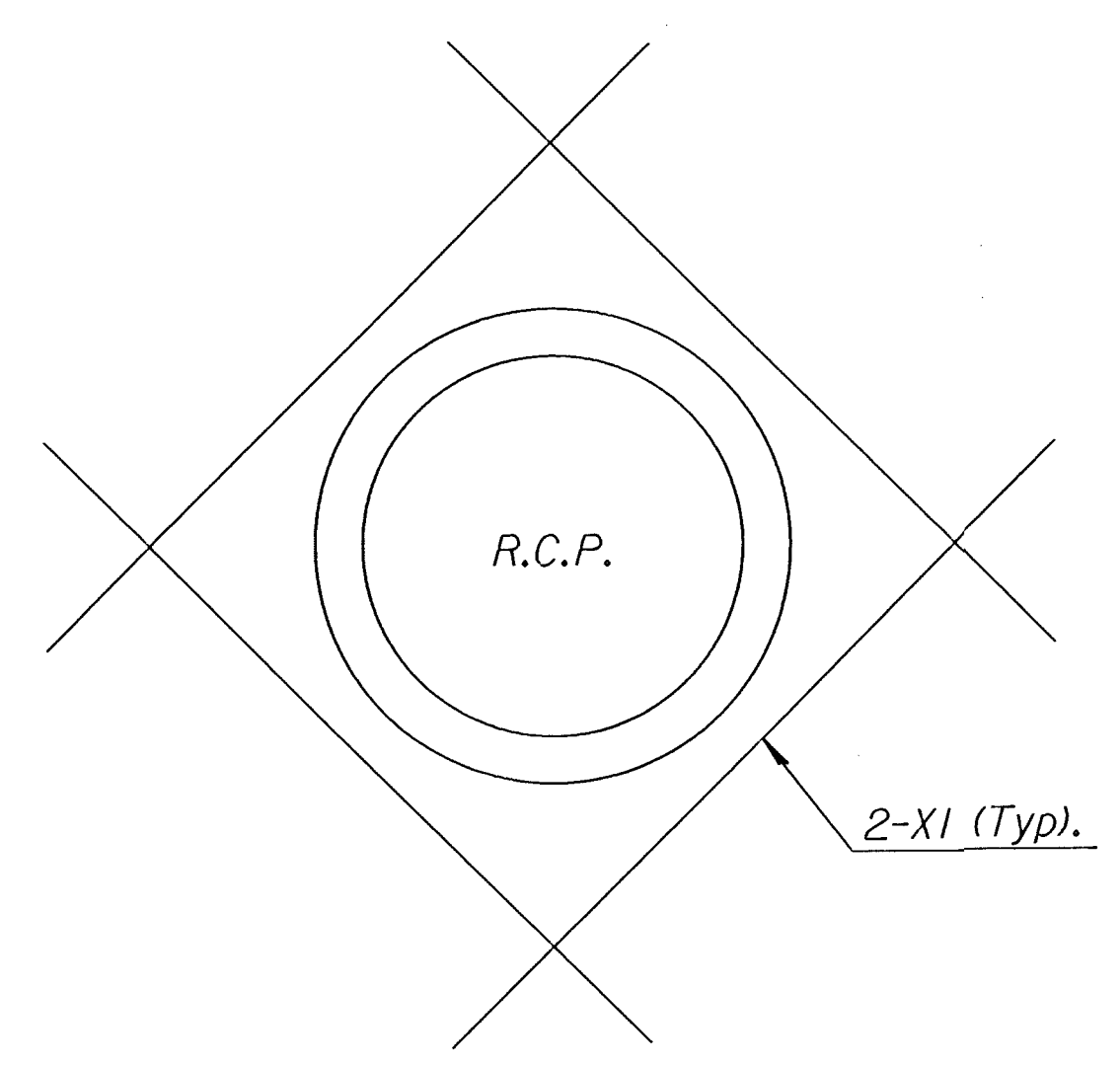
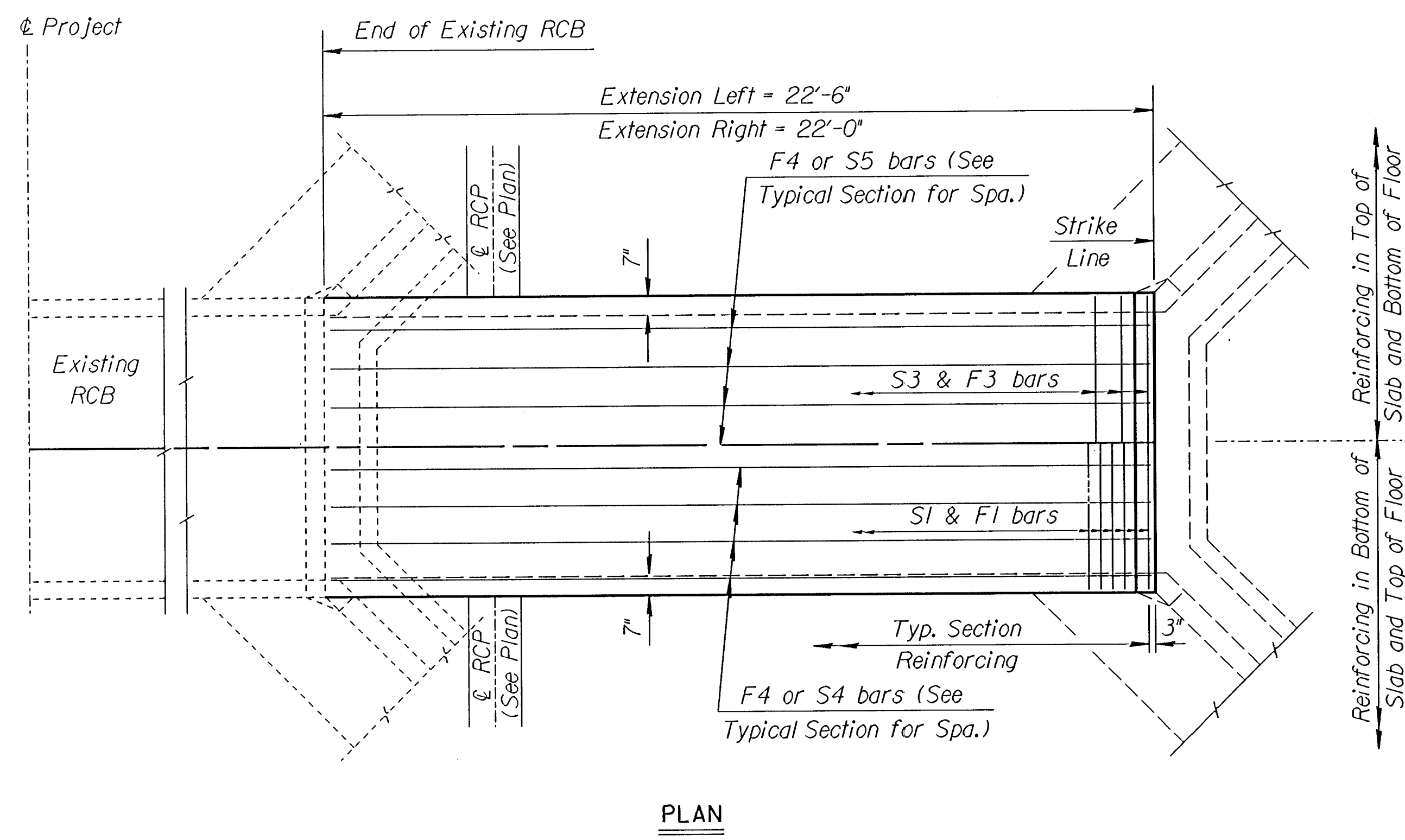
See RCB Auxiliary Details for Optional Splice.

Note:  
S3 bars omitted unless grade box or slab thickness is greater than or equal to 12".

Note:  
F3 bars omitted unless floor thickness is greater than or equal to 12".

†† Omit S5 bars when S3 bars are omitted and omit the bottom layer of F4 bars when F3 bars are omitted.

See Standard No. 80, Sheet No. 77 for additional details.



**STORM SEWER**  
 Ext. Rt. (East and West Wall).  
 Ext. Lt. (East and West Wall).

**GENERAL NOTES**

**LOADING:** HS20-44 AASHTO Specifications, 1983 Edition.  
**UNIT STRESSES:** Class AAA Concrete;  $f'c = 4,000$  p.s.i.  
 Reinforcing Steel;  $f_y = 60,000$  p.s.i.  
**FILL HEIGHT:** Unless otherwise noted, the Design Fill Height is measured from the riding surface at the culvert and shall include the surfacing.  
**CONCRETE:** Class AAA Concrete shall be used throughout. Bevel all exposed edges with a 3/4 inch triangular moulding. Where Class AAA Concrete (AE) is specified, it shall be placed in the top slab above the Construction Joint.  
**REINFORCING:** All reinforcing shall conform to ASTM A615, Grade 60. All dimensions relative to reinforcing steel shall be to centerline of bar unless otherwise noted.  
**EXCAVATION:** Excavation shall not be paid for directly but shall be subsidiary to Class AAA Concrete.  
**SEAL COURSE:** A Seal Course shall be required by the Engineer. The Seal Course shall be unreinforced Concrete (Commercial Grade) to a minimum depth of 3 inches or as determined by the Engineer. Concrete for the seal course shall be paid for at the unit price set for Concrete for Seal Course.  
**FOUNDATION STABILIZATION:** Foundation Stabilization may be required as directed by the Engineer. The depth of Foundation Stabilization shall be determined by the Engineer. Foundation Stabilization shall be paid for at the determined Unit Price set for Foundation Stabilization. See Auxiliary Details.  
**QUANTITIES:** The quantities shown in the Culvert Summary include apron and/or soil saver quantities when their construction is required by the plans. Payment for additional quantities that result from including seal course and/or floating apron, as a change in original plans, shall be made at the Unit Price bid for the various items involved.  
**GRANULAR BACKFILL (WINGWALLS):** Special backfill procedures may be required at the direction of the Engineer. See Auxiliary Details Sheet.  
**STRIKE LINE:** Wingwalls and that portion of the RCB outside the Strike Line shall be constructed level. Footing for wingwalls shall be constructed with the culvert floor. See wingwall detail sheet.

Note: Use only cast-in-place construction at this location.

CULVERT SUMMARY													
Flow Line Elev.	Crown Gr. Elev.	Design Fill Ht.	Skew	Wings	Scour Apron	Soil Saver	Granular Backfill	Concrete			Reinf. Steel (Gr. 60)		
								Barrel (Cu.Yds.)	Wings (Cu.Yds.)	Total (Cu.Yds.)	Barrel (Lbs.)	Wings (Lbs.)	Total (Lbs.)
Ext.Lt. 1339.55	1350.38	3	0	FLARED	NO	NO	NO	16.34	11.39	27.73	1686.60	865.80	2552.40
Ext.Rt. 1339.50	1350.38	3	0	FLARED	NO	NO	NO	15.99	11.39	27.39	1656.05	865.80	2521.85

BAR SCHEDULE																															
F1				F3				F4				S1				S3				S4				S5							
Size	Spa.	No.	Length	Size	Spa.	No.	Length	Size	Spa.	No.	Length	Size	Spa.	No.	Length	Size	Spa.	No.	Length	Size	Spa.	No.	Length	Size	Spa.	No.	Length	Size	Spa.	No.	Length
Ext.Lt. 6	6/2"	44	7'-10"	-	-	-	-	4	6	22'-2"	6	6/2"	44	7'-10"	-	-	-	-	-	-	-	-	-	-	-	-	-	-	-	-	
Ext.Rt. 6	6/2"	43	7'-10"	-	-	-	-	4	6	21'-8"	6	6/2"	43	7'-10"	-	-	-	-	-	-	-	-	-	-	-	-	-	-	-		

Minimum Splice Lengths	
#4	1'-4"
#5	1'-8"
#6	2'-0"

SUMMARY OF QUANTITIES	
Class AAA Concrete	55.1 C.Y.
Class AAA Concrete (AE)	0.0 C.Y.
Reinforcing Steel (Gr. 60)	5070 Lbs.
Reinforcing Steel (Epoxy Coated)	0 Lbs.

**KANSAS DEPARTMENT OF TRANSPORTATION**  
 Sta. 65+89

**SINGLE 7' x 7' RCB**  
 22'-6" EXT. LT.  
 22'-0" EXT. RT.

**SEDGWICK CO.**

DESIGNED: 6-5-91 APP'D: KENNETH F. HURST  
 DETAILED: QUANTITIES: TRACED  
 DESIGN CK. DETAIL CK. QUAN. CK. TRACE CK.