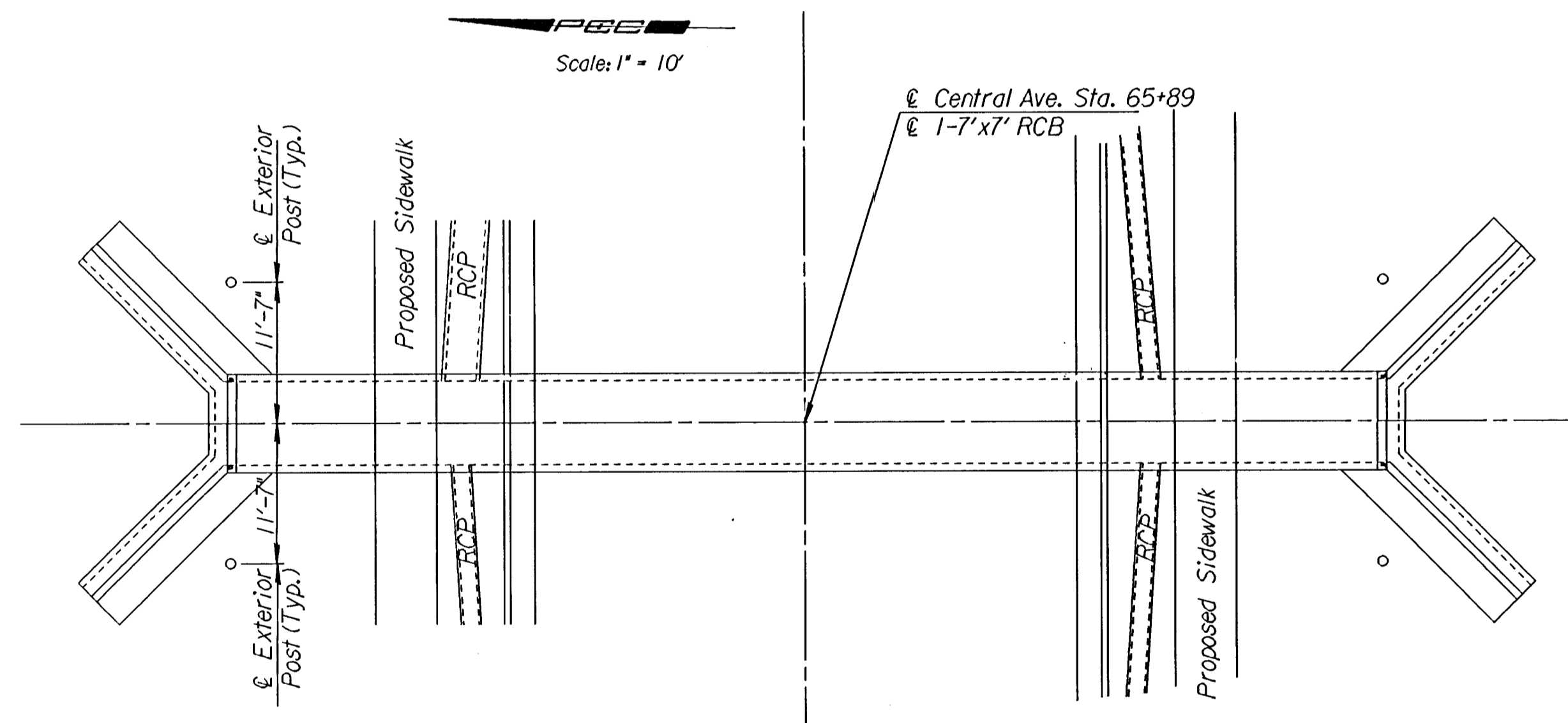
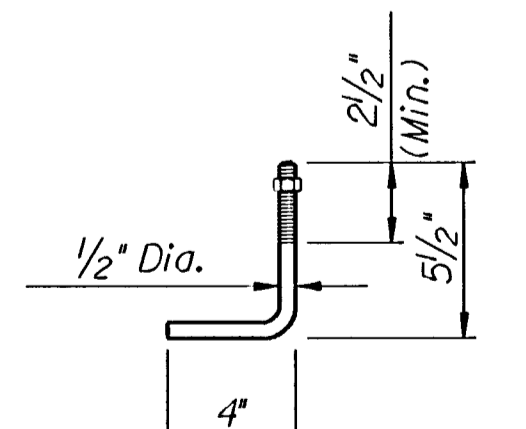


RAIL LOCATION PLAN
2-7'x7' RCB



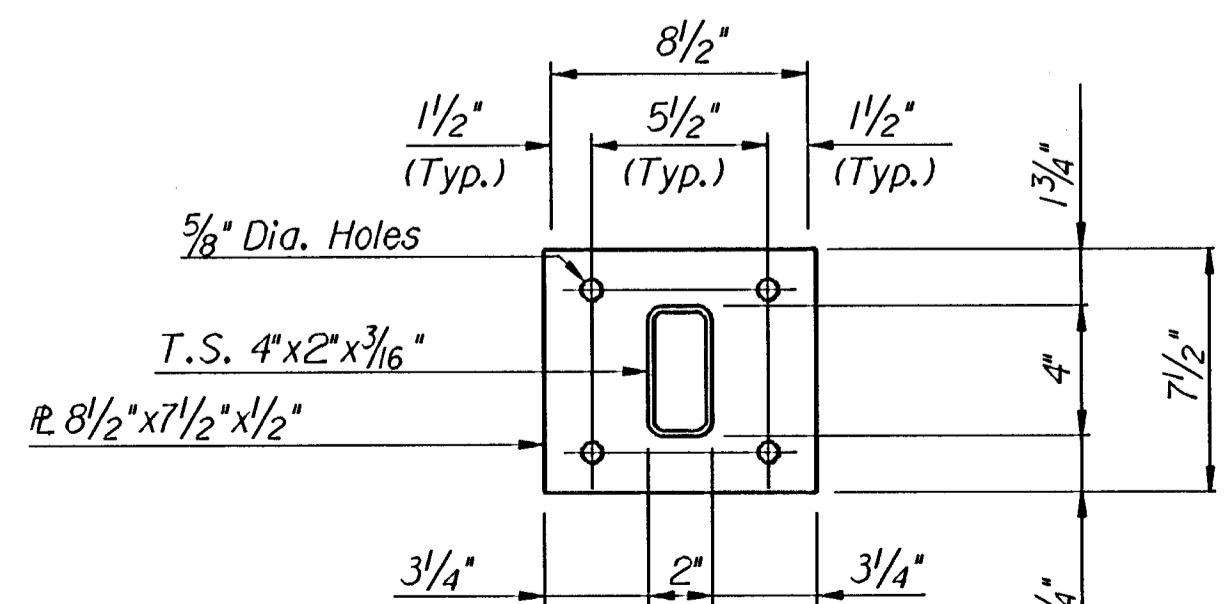
RAIL LOCATION PLAN
1-7'x7' RCB



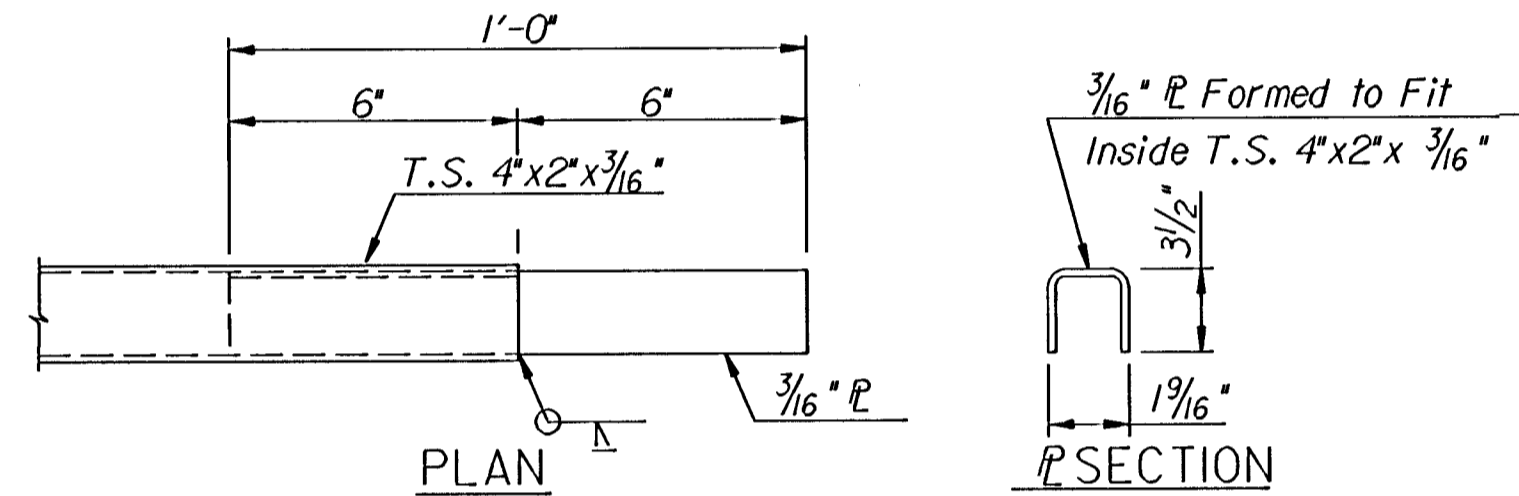
Galvanized (ASTM A153)
(May substitute expandable anchor bolts when approved by the Engineer)

ANCHOR BOLT

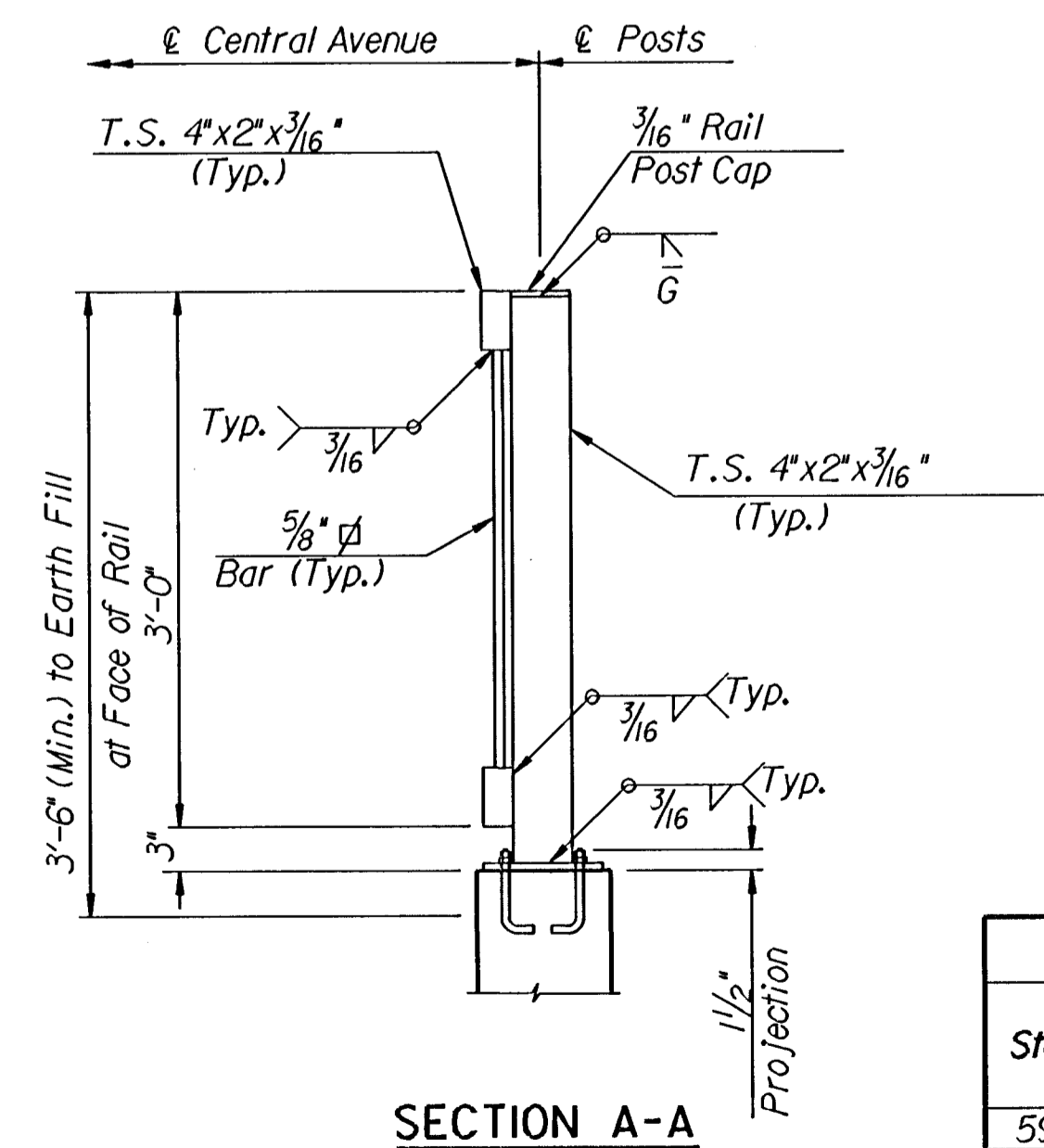
(Orient to provide min. 2" edge clearance to either hubguard face or adjacent bolts)



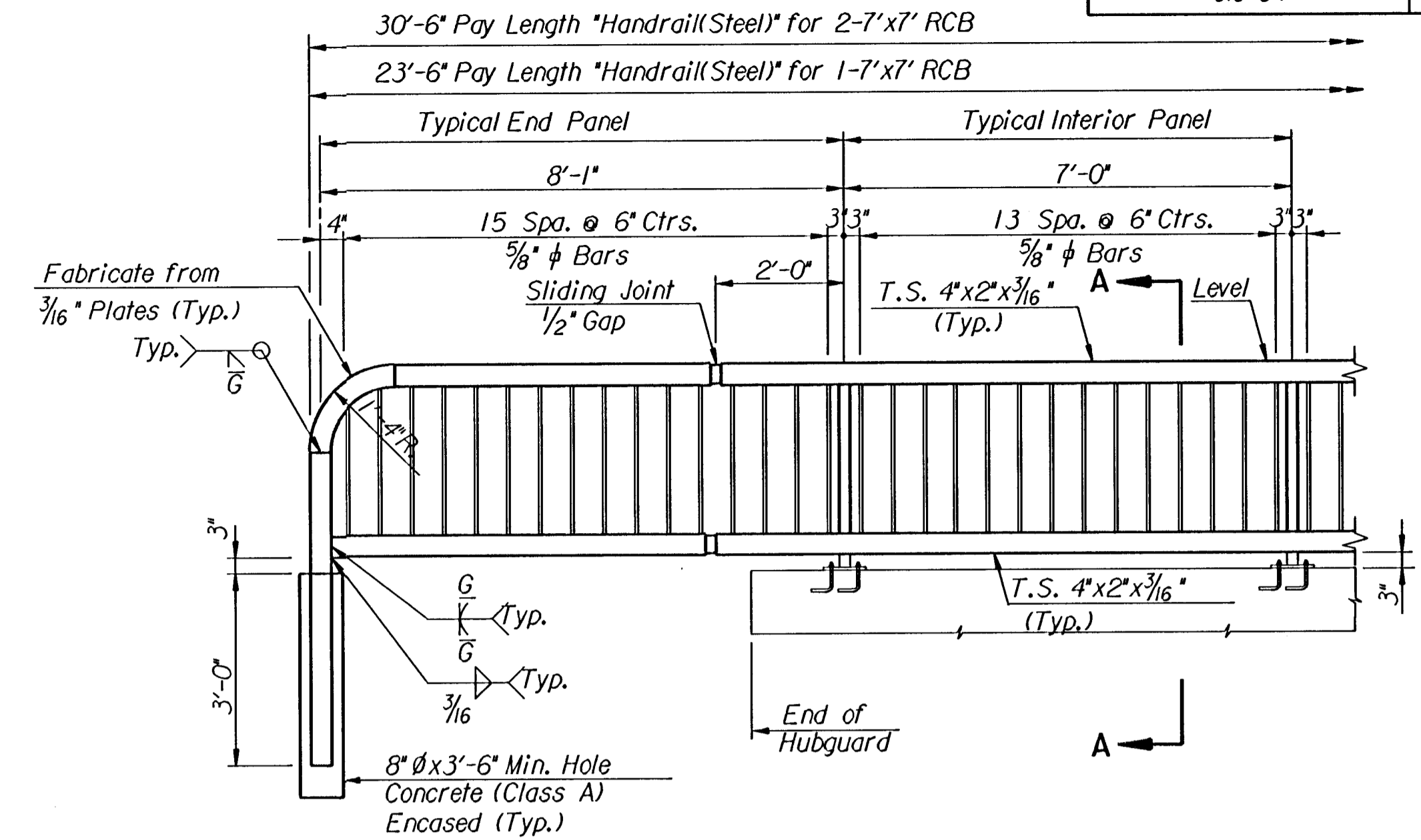
BASE PLATE



SLIDING JOINT DETAIL



SECTION A-A



HANDRAIL ELEVATION

GENERAL NOTES

THE HORIZONTAL MEMBERS OF THE RAIL AND POSTS SHALL BE HOLLOW STRUCTURAL TUBING. ALL STRUCTURAL STEEL AND TUBING SHALL COMPLY TO A.S.T.M. DESIGNATION A36 OR A500 GR. B RESPECTIVELY.

RAIL SHALL BE FABRICATED IN LENGTHS AS SHOWN FROM JOINT TO JOINT AND JOINT TO END.

POSTS AND BARS SHALL BE SET VERTICAL AND SHIMMED IF REQUIRED.

THE PAINT SYSTEM SHALL BE PROVIDED BY CARBOLINE; 350 HANLEY INDUSTRIAL CT.; ST. LOUIS, MO. THE APPLICATION WILL BE IN ACCORDANCE WITH THE MANUFACTURERS RECOMMENDATIONS.

- THE PAINT PROCEDURE IS AS FOLLOWS:
1. ABRASIVE BLAST TO COMMERCIAL FINISH SSPC-SP6 TO OBTAIN A SURFACE PROFILE OF 1/2 MILS.
 2. APPLY TWO COATS OF CARBOLINE GP 818 PRIMER (2 TO 4 MILS PER COAT).
 3. APPLY ONE TOPCOAT OF SUBSIL 30 HS (2 TO 3 MILS) (COLOR-CARBOLINE-#336). AN APPROVED SUBSTITUTION OF THE TOTAL PAINT SYSTEM WILL BE ALLOWED WITH THE APPROVAL OF THE ENGINEER.

MATERIAL AND CONSTRUCTION SHALL CONFORM TO THE STRUCTURAL WELDING CODE A.W.S. DI.1-88.

SHOP DETAILS MUST BE SUBMITTED AND APPROVED BY THE ENGINEER.

ALL WORK ASSOCIATED WITH FURNISHING AND INSTALLING HANDRAIL SHALL BE SUBSIDIARY TO THE BID ITEM "HANDRAIL(STEEL)."

SUMMARY OF QUANTITIES			
Station	Location	Side	Handrail (Steel) L.F.
59+09	2-7'x7' RCB	Lt.	30.50
59+09	2-7'x7' RCB	Rt.	30.50
65+89	1-7'x7' RCB	Lt.	23.50
65+89	1-7'x7' RCB	Rt.	23.50
Total			108.0 L.F.

No.	Revisions	By	Date
SEDGWICK COUNTY BUREAU OF PUBLIC SERVICES STA. 59+09 STA. 65+89 HANDRAIL DETAILS			
PROJECT NO. 618-34		SEDGWICK COUNTY	
PROFESSIONAL ENGINEERING CONSULTANTS, P.A. ENGINEERS WICHITA, KANSAS			
Designed by	P.D.F.	Checked by	
Drawn by	MAF	Date	Feb. 1998
		Job No.	95297-2