

PROPOSED TRAFFIC SIGNAL CONSTRUCTION SEQUENCE AT 127TH

Switch existing signal to pre-timed mode.
Coordinate with Sedgwick County.

Install new controller.
Provide Traffic Control as required by MUTCD. Remove existing heads on poles as required. (4 left turn and 2 through movement).

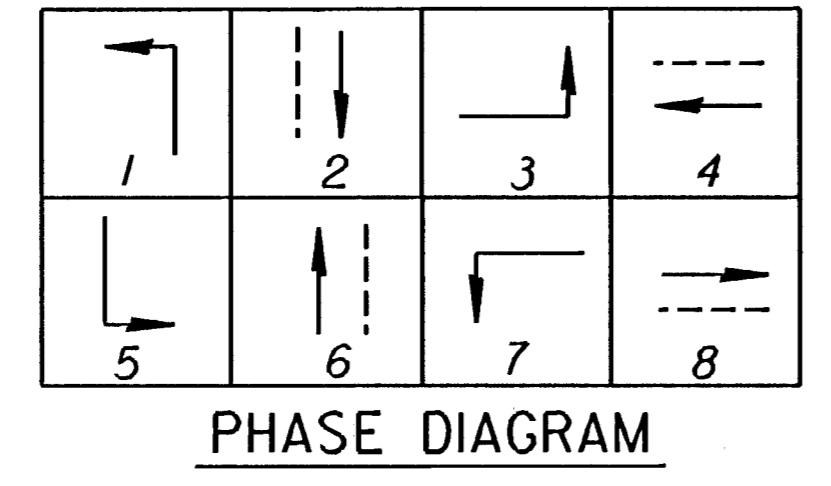
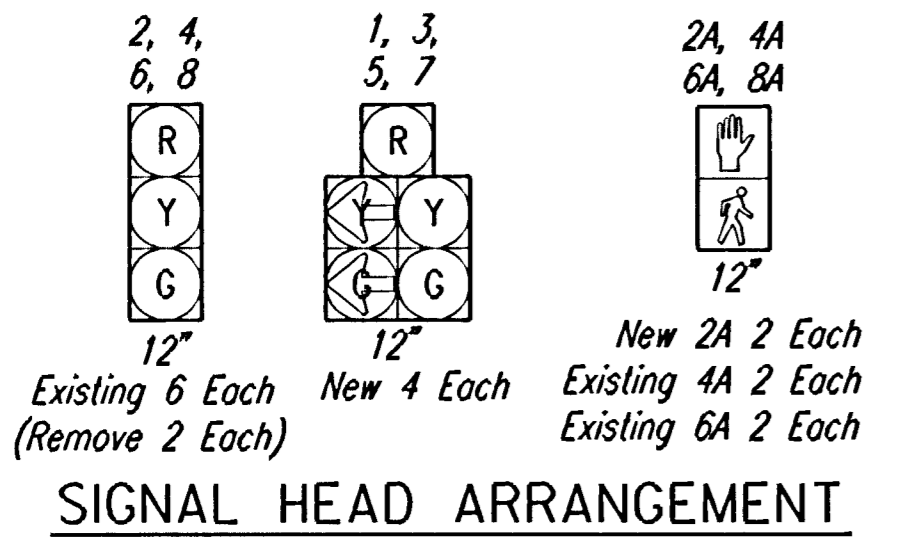
Install new left turn heads and relocate existing through movement heads to locations as shown on plan. Connect heads to operate in pre-timed mode.

Install new loop detector and lead-in loop detector wires on Central west of 127th (west leg). Existing loops and lead-in detector wire on north, south and east legs of intersection to remain and be reconnected to new controller.

Connect existing and new lead-in wires to new controller.

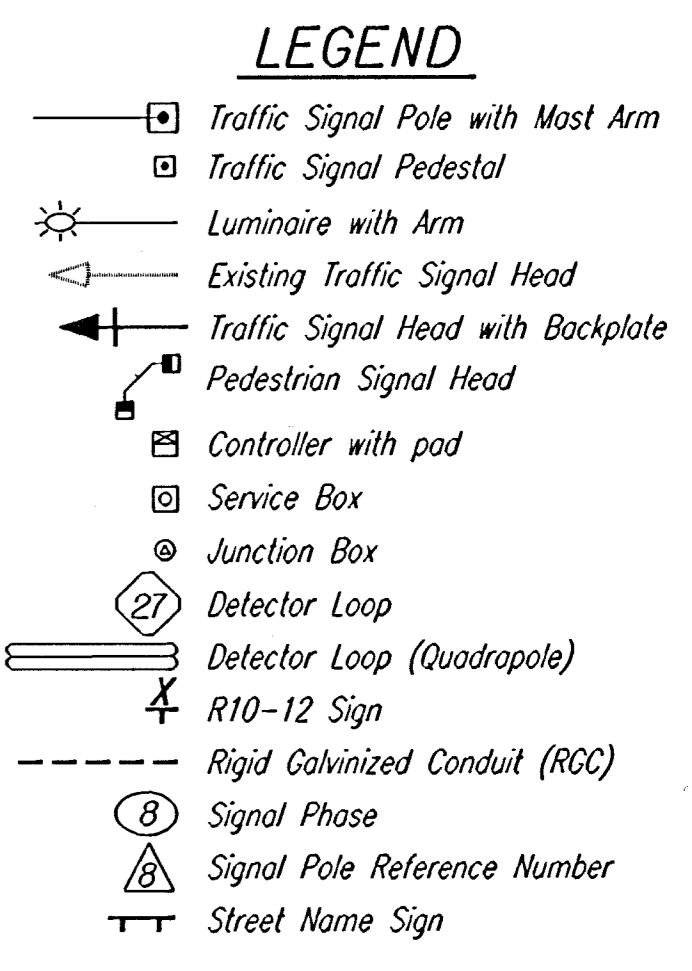
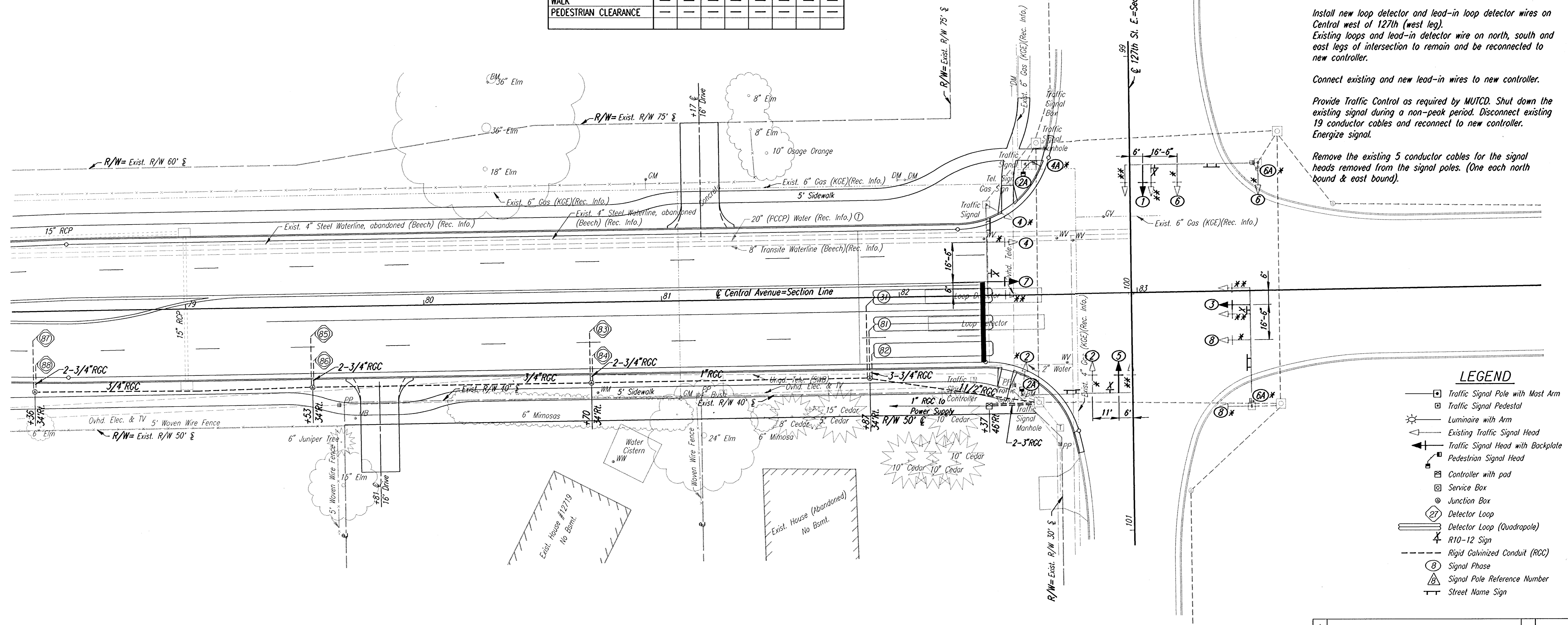
Provide Traffic Control as required by MUTCD. Shut down the existing signal during a non-peak period. Disconnect existing 19 conductor cables and reconnect to new controller. Energize signal.

Remove the existing 5 conductor cables for the signal heads removed from the signal poles. (One each north bound & east bound).



	PHASE							
	1	2	3	4	5	6	7	8
MINIUM GREEN	4.0	5.0	4.0	5.0	4.0	5.0	4.0	5.0
PASSAGE TIME	1.0	1.0	1.0	1.0	1.0	1.0	1.0	1.0
MAXIMUM NO.1	30	80	30	80	30	80	30	80
MAXIMUM NO.2	30	80	30	80	30	80	30	80
YELLOW CHANGE	3.0	3.2	3.0	3.2	3.0	3.2	3.0	3.2
RED CLEARANCE	0.5	1.3	0.5	1.3	0.5	1.3	0.5	1.3
SECONDS/ACTUATION	2.0	2.0	2.0	2.0	2.0	2.0	2.0	2.0
MAXIMUM INITIAL	5.0	5.0	5.0	5.0	5.0	5.0	5.0	5.0
TIME BEFORE REDUCTION	—	20	—	20	—	20	—	20
CARS BEFORE REDUCTION	—	—	—	—	—	—	—	—
TIME TO REDUCE	—	—	—	—	—	—	—	—
MINIUM GAP	—	—	—	—	—	—	—	—
WALK	—	—	—	—	—	—	—	—
PEDESTRIAN CLEARANCE	—	—	—	—	—	—	—	—

Scale: 1"=20'



Note: Existing traffic signal heads to be removed (6 each) and the existing controller shall be stockpiled on the job site by the contractor for removal by others.

- UTILITIES**
- Water: Beech
 - Water: Wichita Water Dept.
 - Power: Kansas Gas & Electric
 - Gas: Kansas Gas & Electric
 - Telephone: Southwestern Bell
 - Cable TV: Multimedia Cablevision

* Existing Signal Head to Remain & be positioned as shown.
** Existing Signal Head to be Removed

1:/1995/95297/002/stgpl127.dgn
 Drawn by: JGP
 Plotted by: DWN 11/2-97

Revisions		By	Date
SEDGWICK COUNTY BUREAU OF PUBLIC SERVICES			
TRAFFIC SIGNAL PLAN			
CENTRAL AVE. & 127TH ST. E.			
PROJECT NO. 618-34		SEDGWICK COUNTY	
PROFESSIONAL ENGINEERING CONSULTANTS, P.A.			
ENGINEERS WICHITA, KANSAS			
Designed by	BER	Checked by	WDH
Drawn by	MAF	Date	JULY 1997
		Job No. 95297-2	