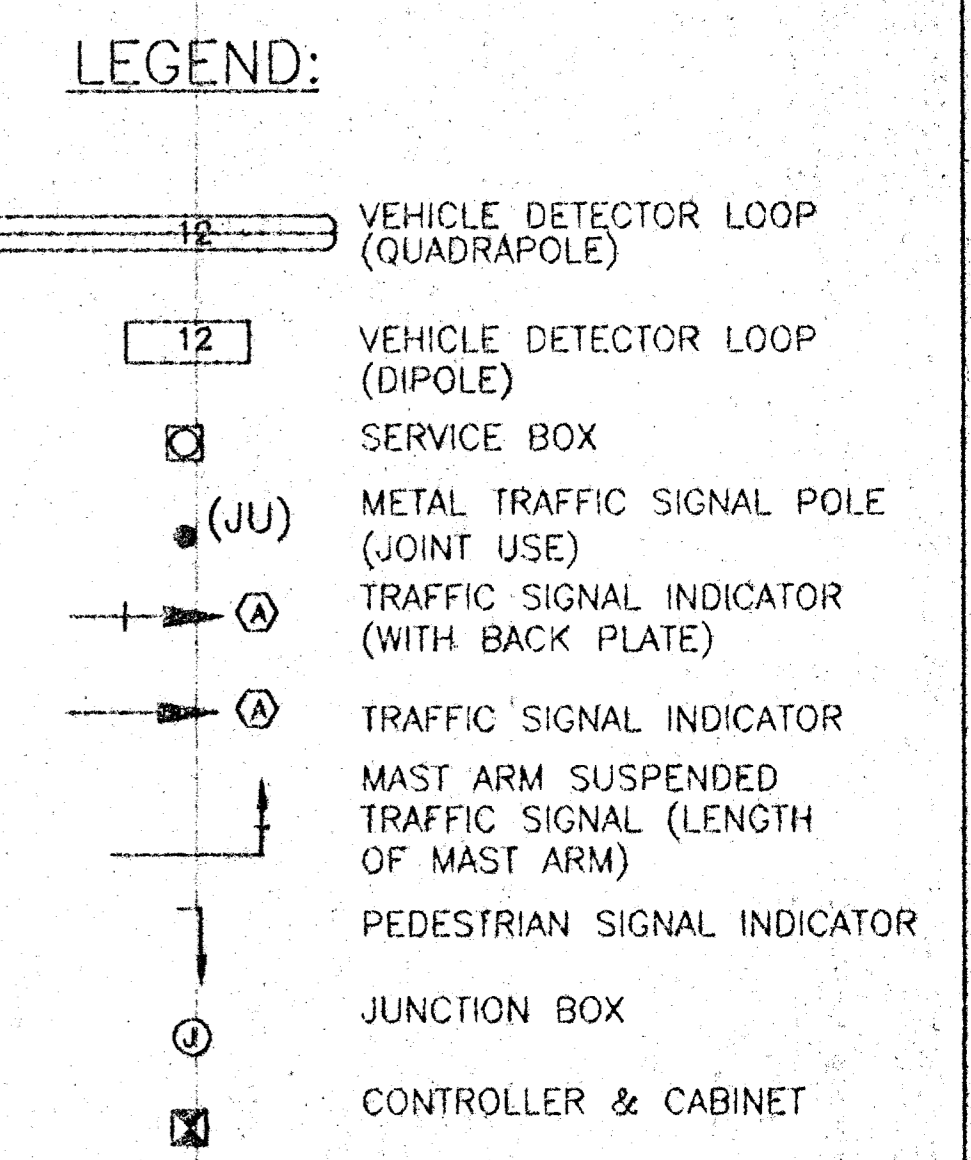
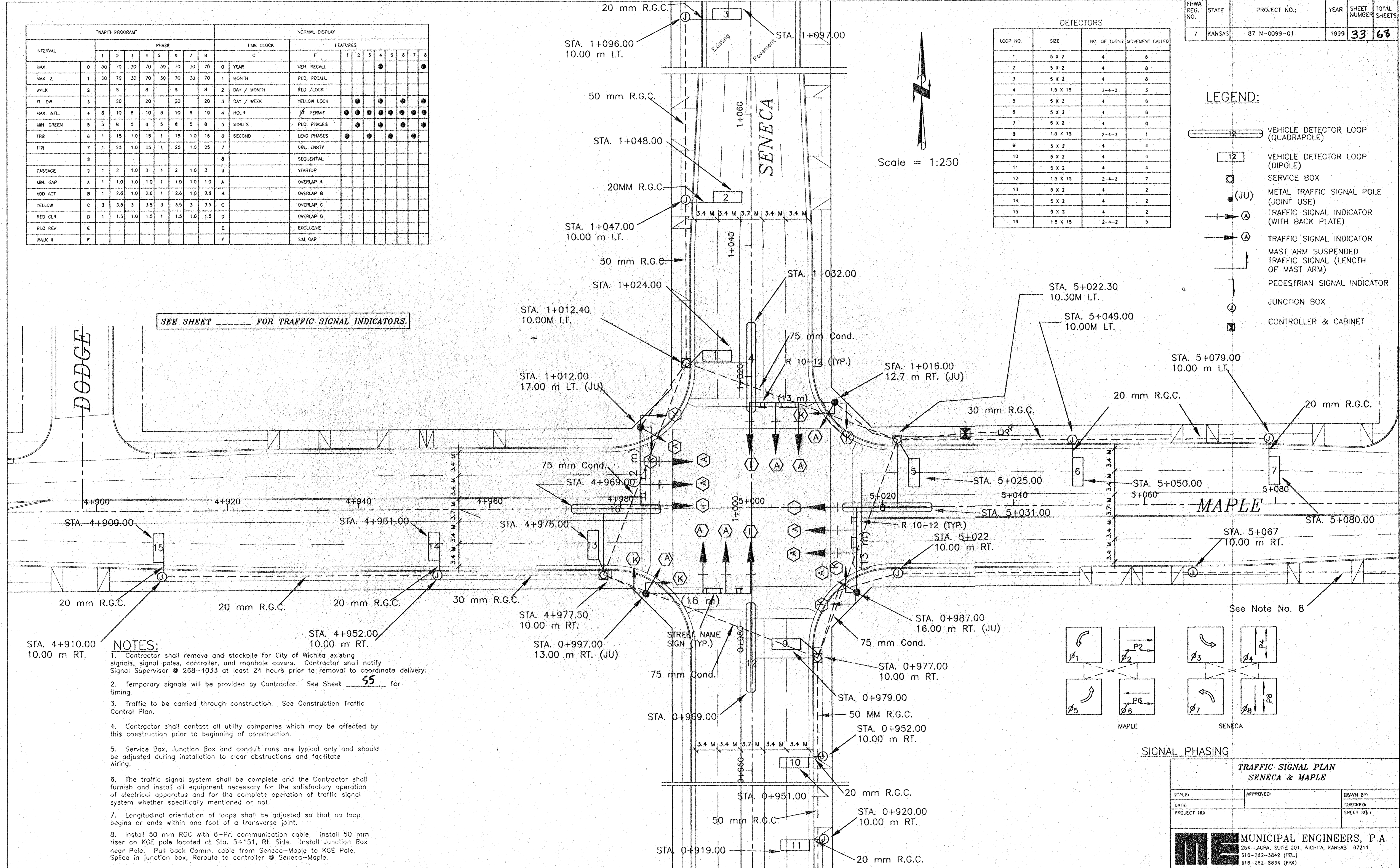
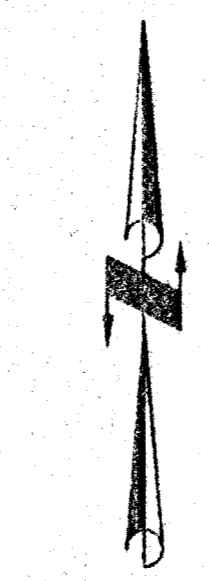


INTERVAL	PHASE								TIME CLOCK		FEATURES	
	1	2	3	4	5	6	7	8	C	YEAR		
MAX.	0	30	70	30	70	30	70	30	70	0	YEAR	VEH. RECALL
MAX. 2	1	30	70	30	70	30	70	30	70	1	MONTH	PED. RECALL
WALK	2		8		8		8		8	2	DAY / MONTH	RED / LOCK
FL. DW.	3		20		20		20		20	3	DAY / WEEK	YELLOW LOCK
MAX. INTL.	4	6	10	6	10	6	10	6	10	4	HOUR	PERMIT
MIN. GREEN	5	5	8	5	8	5	8	5	8	5	MINUTE	PED. PHASES
TBR	6	1	15	1.0	15	1	15	1.0	15	6	SECOND	LEAD PHASES
TTR	7	1	25	1.0	25	1	25	1.0	25	7		DBL. ENTRY
	8									8		SEQUENTIAL
PASSAGE	9	1	2	1.0	2	1	2	1.0	2	9		STARTUP
MIN. GAP	A	1	1.0	1.0	1.0	1	1.0	1.0	1.0	A		OVERLAP A
ADD. ACT.	B	1	2.6	1.0	2.6	1	2.6	1.0	2.6	B		OVERLAP B
YELLOW	C	3	3.5	3	3.5	3	3.5	3	3.5	C		OVERLAP C
RED CLR.	D	1	1.5	1.0	1.5	1	1.5	1.0	1.5	D		OVERLAP D
RED REV.	E									E		EXCLUSIVE
WALK II	F									F		SIM. GAP

DETECTORS			
LOOP NO.	SIZE	NO. OF TURNS	MOVEMENT CALLED
1	5 X 2	4	8
2	5 X 2	4	8
3	5 X 2	4	8
4	1.5 X 15	2-4-2	3
5	5 X 2	4	6
6	5 X 2	4	6
7	5 X 2	4	6
8	1.5 X 15	2-4-2	1
9	5 X 2	4	4
10	5 X 2	4	4
11	5 X 2	4	4
12	1.5 X 15	2-4-2	7
13	5 X 2	4	2
14	5 X 2	4	2
15	5 X 2	4	2
16	1.5 X 15	2-4-2	3

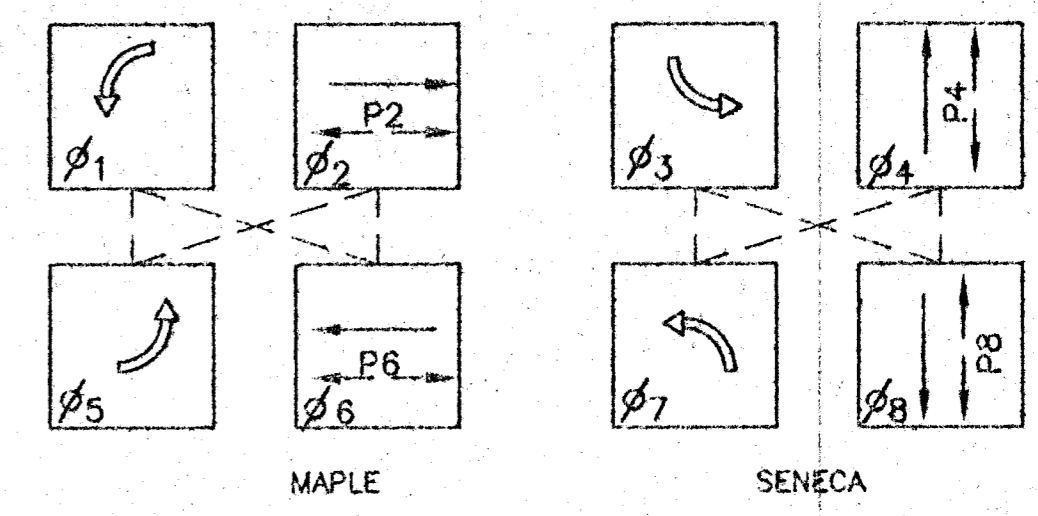


Scale = 1:250



SEE SHEET \_\_\_\_\_ FOR TRAFFIC SIGNAL INDICATORS.

- NOTES:**
- Contractor shall remove and stockpile for City of Wichita existing signals, signal poles, controller, and manhole covers. Contractor shall notify Signal Supervisor @ 268-4033 at least 24 hours prior to removal to coordinate delivery.
  - Temporary signals will be provided by Contractor. See Sheet 55 for timing.
  - Traffic to be carried through construction. See Construction Traffic Control Plan.
  - Contractor shall contact all utility companies which may be affected by this construction prior to beginning of construction.
  - Service Box, Junction Box and conduit runs are typical only and should be adjusted during installation to clear obstructions and facilitate wiring.
  - The traffic signal system shall be complete and the Contractor shall furnish and install all equipment necessary for the satisfactory operation of electrical apparatus and for the complete operation of traffic signal system whether specifically mentioned or not.
  - Longitudinal orientation of loops shall be adjusted so that no loop begins or ends within one foot of a transverse joint.
  - Install 50 mm RGC with 6-Pr. communication cable. Install 50 mm riser on KGE pole located at Sta. 5+151, Rt. Side. Install Junction Box near Pole. Pull back Comm. cable from Seneca-Maple to KGE Pole. Splice in junction box, Reroute to controller @ Seneca-Maple.



**SIGNAL PHASING**

**TRAFFIC SIGNAL PLAN  
SENECA & MAPLE**

SCALE:	APPROVED:	DRAWN BY:
DATE:	CHECKED:	SHEET NO.:
PROJECT NO.:		

**ME MUNICIPAL ENGINEERS, P.A.**  
254-LAURA, SUITE 201, WICHITA, KANSAS 67211  
316-262-3842 (TEL.)  
316-262-8834 (FAX)