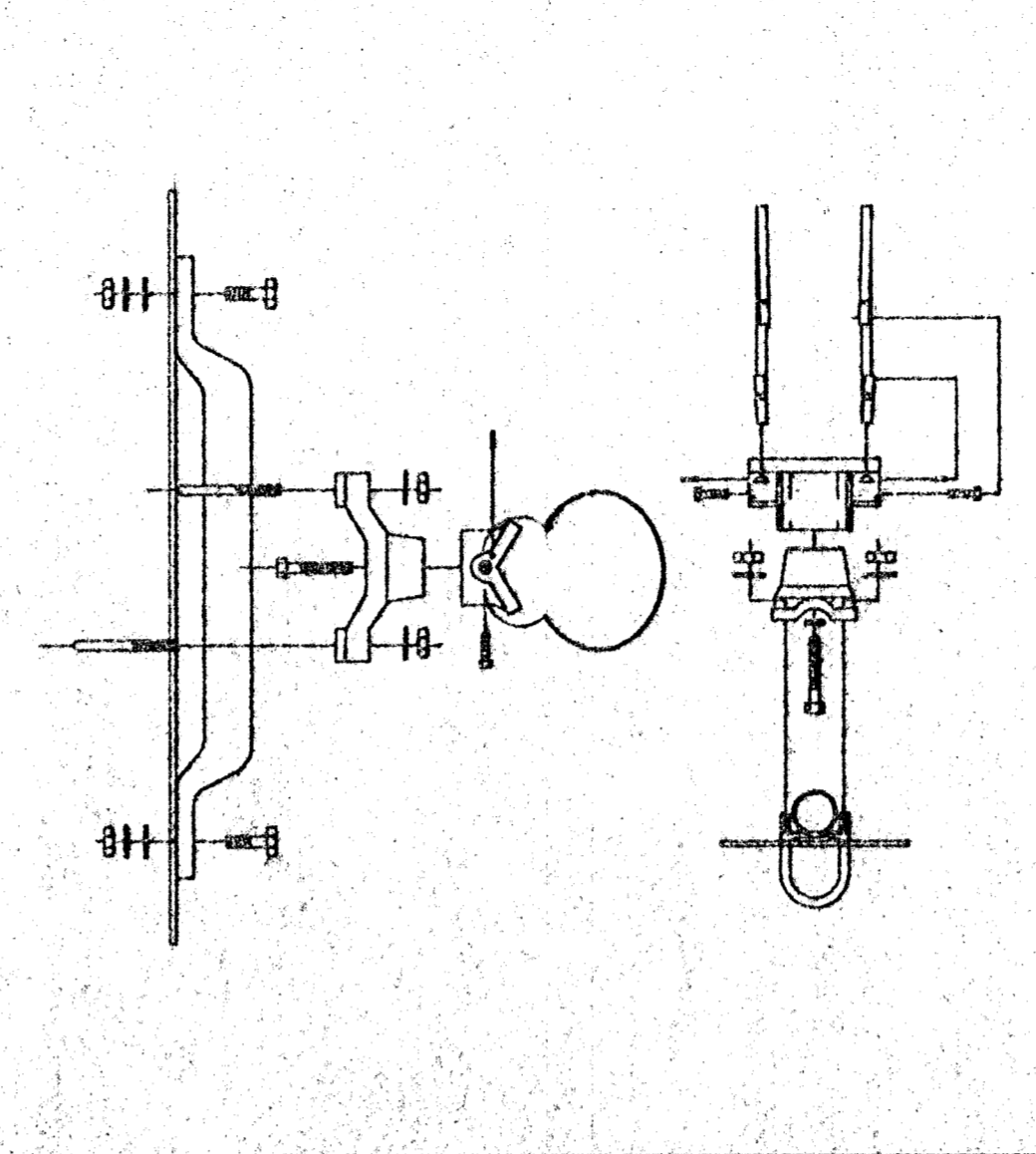
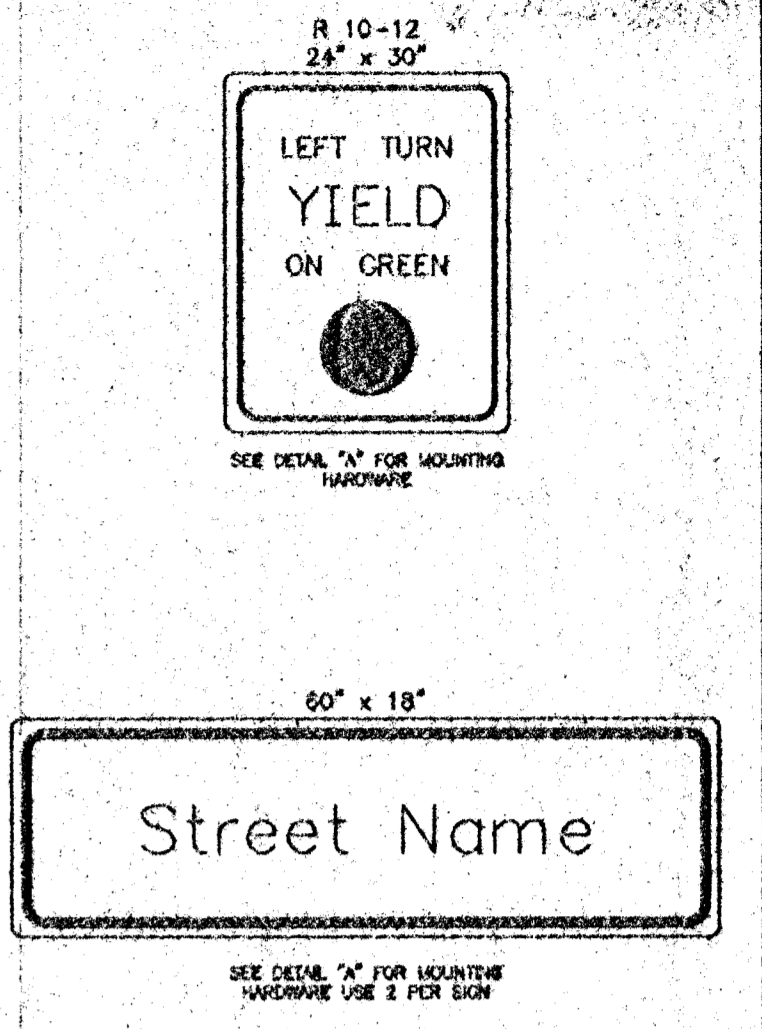
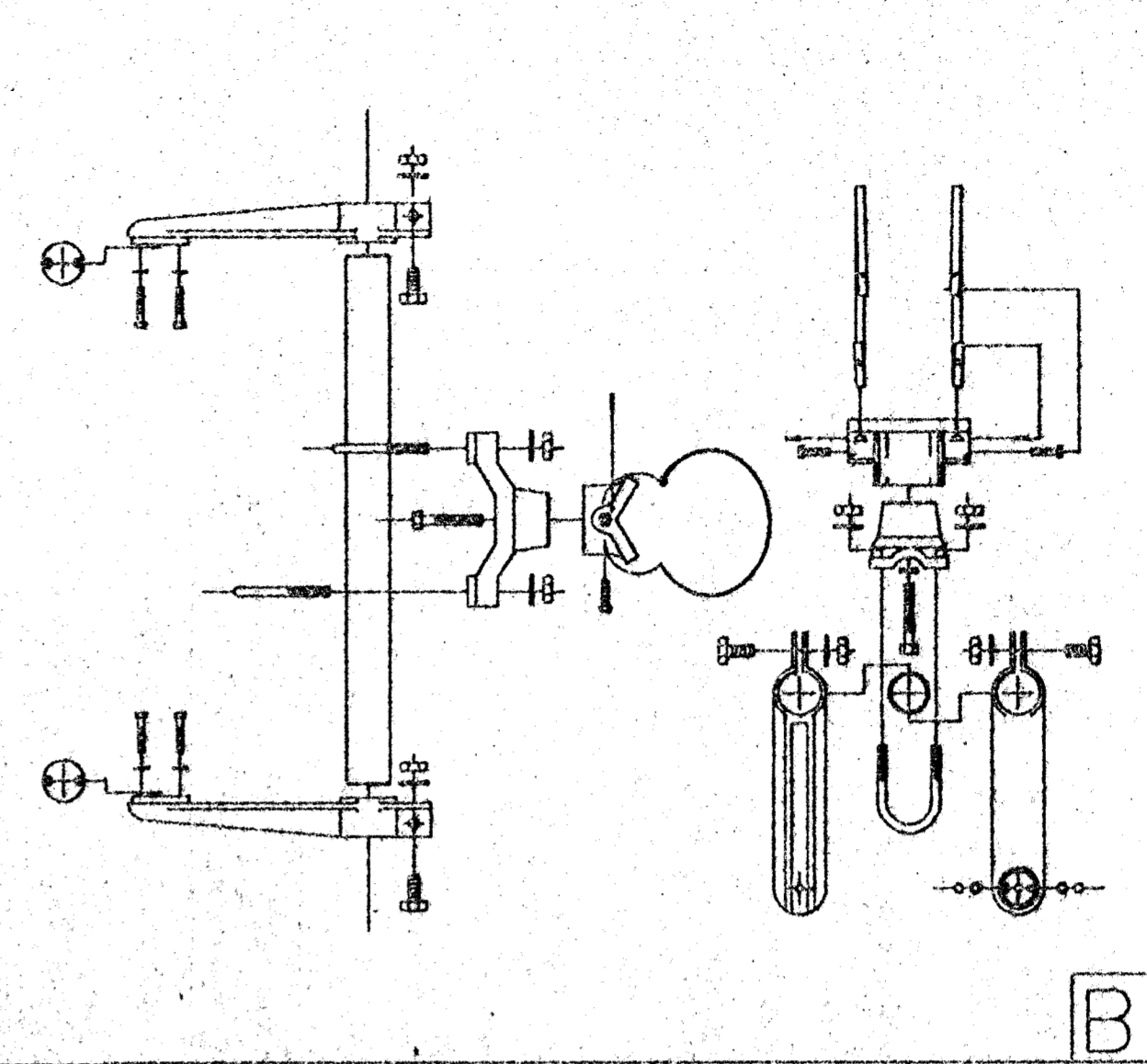


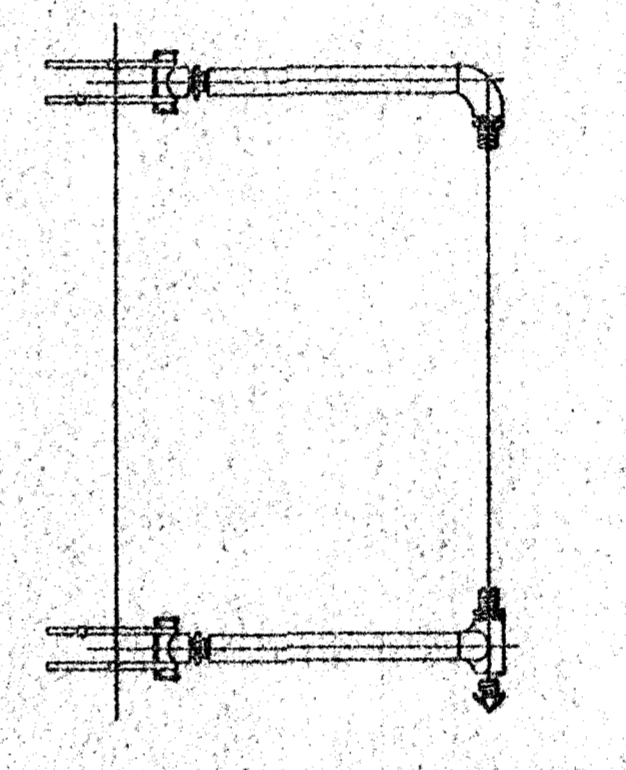
BANDED SIGN MOUNTING BRACKET DETAIL



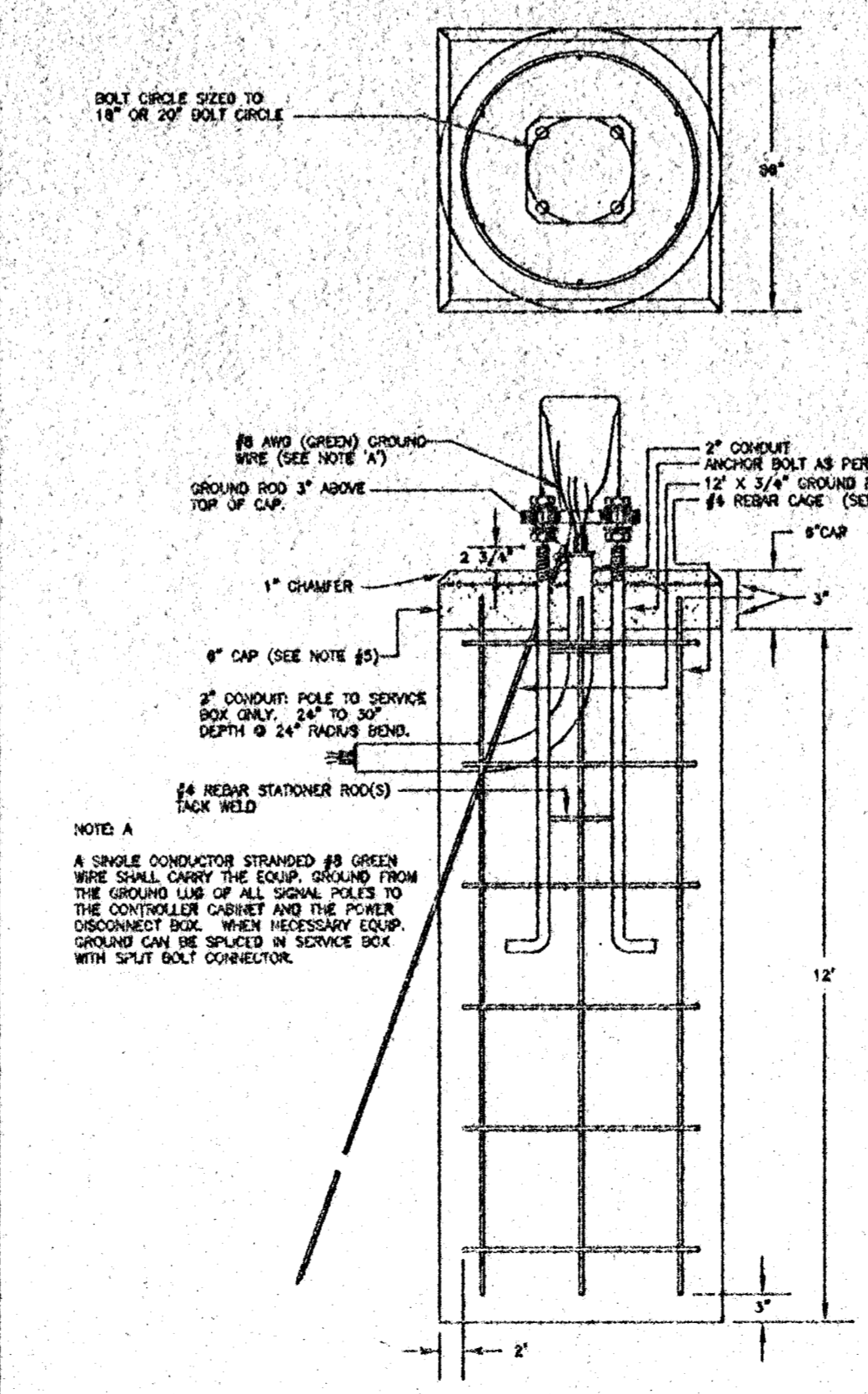
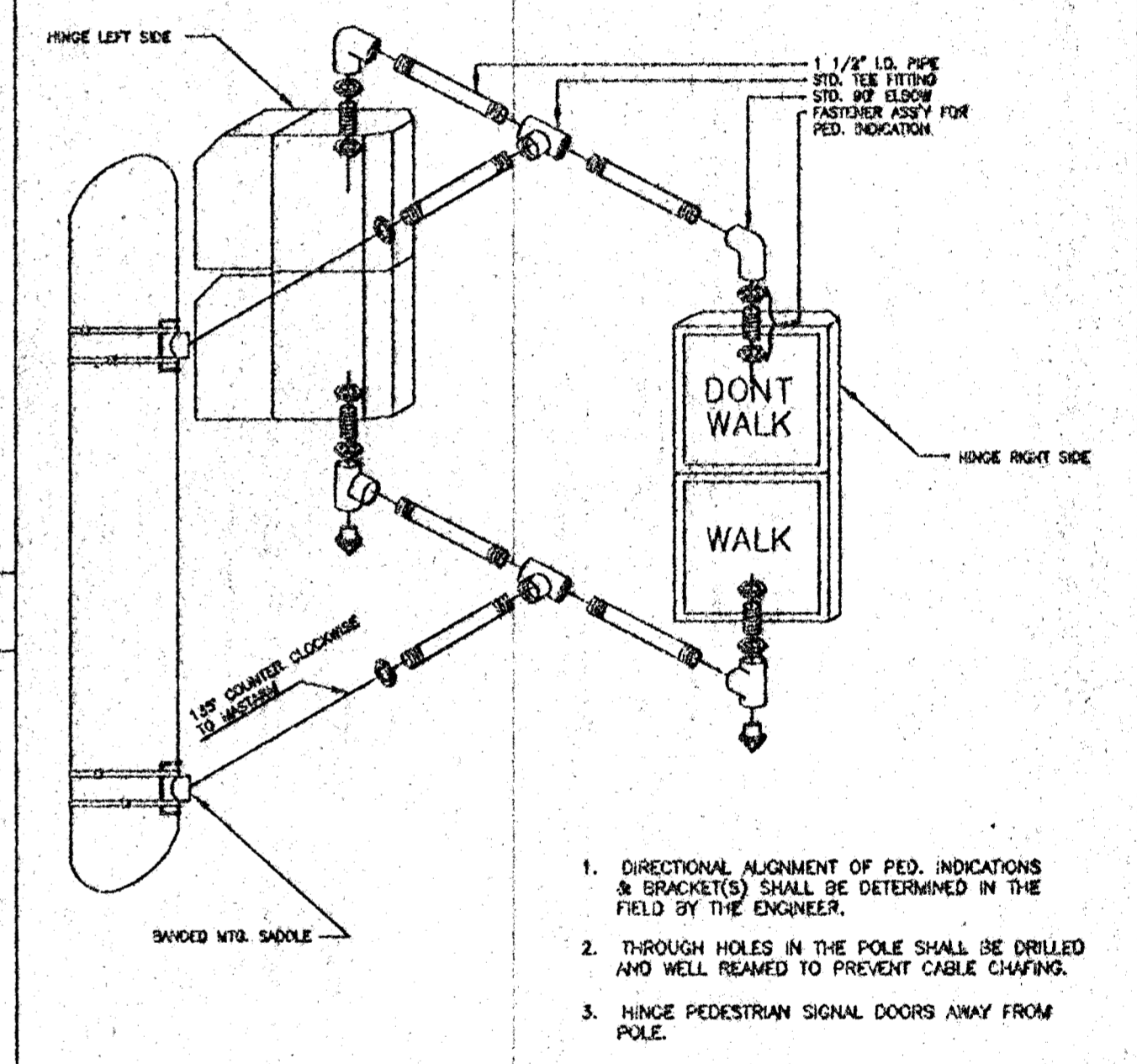
TYPE I SIGNAL MOUNTING BRACKET ASSEMBLY DETAIL



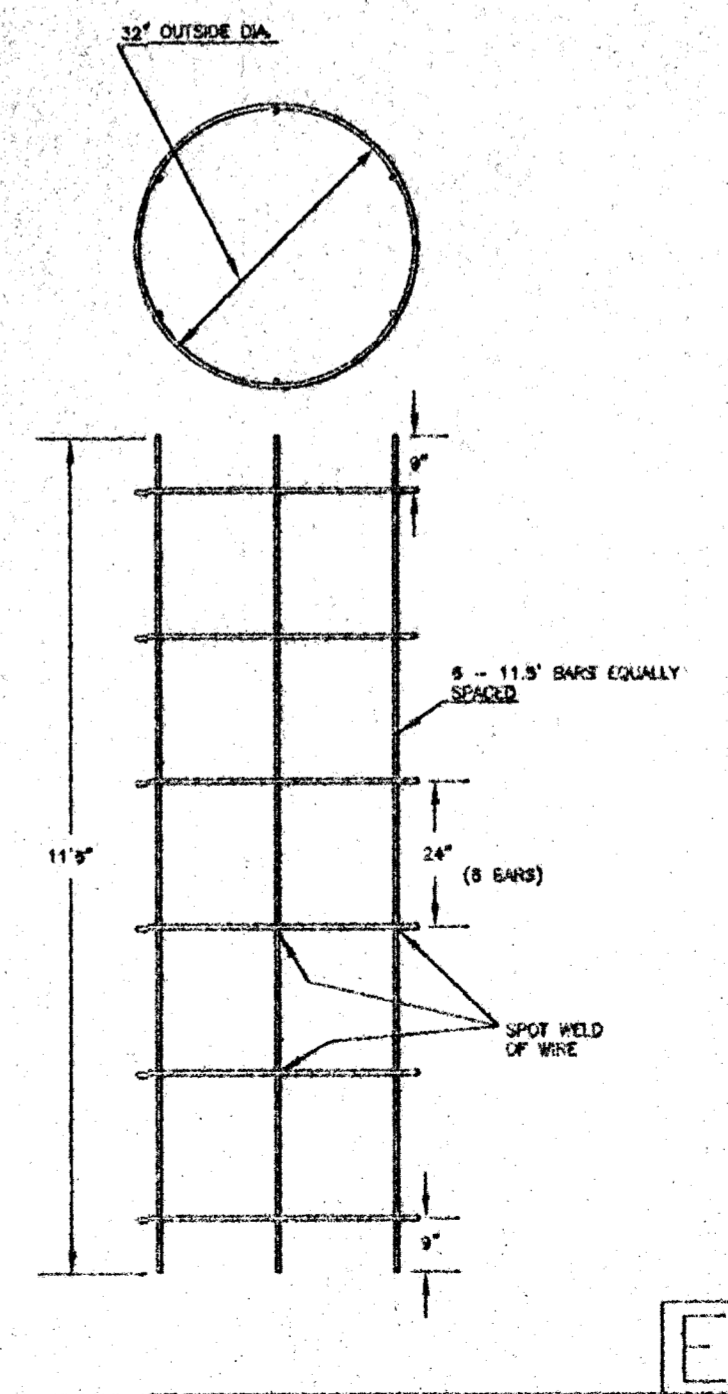
TYPE III SIDE-OF-POLE MOUNTING BRACKET ASSEMBLY



TYPE II SIGNAL MOUNTING BRACKET ASSEMBLY (SIDE-OF-POLE)



REBAR CAGE



- NOTE:
1. THE ANCHOR BOLTS FOR THE SIGNAL POLE SHALL BE TACK WELDED TOGETHER IN A 18" OR 20" DIA. BOLT PATTERN (ON CENTERS AS SHOWN) TO MAINTAIN REQUIRED BOLT CONFIGURATION PATTERN AND TO AID IN VERTICAL POSITIONING WHILE CONCRETE BASE IS POURED.
  2. USE ANTI-SIZE COMPOUND ON ALL THREADS.
  3. 12" x 3/4" GROUND ROD TO BE POSITIONED BEFORE POURING BASE.
  4. CLASS 'A' CONCRETE SHALL BE USED TO CONSTRUCT BASE.
  5. CONSTRUCT A 6" THICK x 30" SQUARE CONCRETE CAP AFTER POLE HAS BEEN ERECTED & FLANGED, CHAMFER EDGE 1", MUST BE APPROVED BY ENG. BEFORE POURING.
  6. CONDUIT SHALL HAVE PLASTIC (OR METAL) BUSHING (AFTER BASE) TO PREVENT CABLE CHAFING.
  7. USE #8 WIRE COPPER GROUND CONDUCTOR FROM CLAMP TO GROUND BOLT IN ACCESS HOLE.

PROJECT DESCRIPTION		
STEEL SIGNAL POLE ASSEMBLY DETAILS		
PROJECT NUMBER		
DESIGN BY: T.M.	APPROVED BY:	REVISED BY: T.M.
DATE: FEB. 98		DATE: MAY, 97
CITY OF WICHITA DEPARTMENT OF PUBLIC WORKS		
DIVISION OF TRAFFIC ENGINEERING	SCALE	
W.M. G. MCKINLEY P.E. TRAFFIC ENGINEER		NO SCALE