

Benchmarks

Benchmark - 1
"□" Chisled on Top of Curb, west of road across from Parcel A-3
Elev.=1353.86 (NAVD 88)

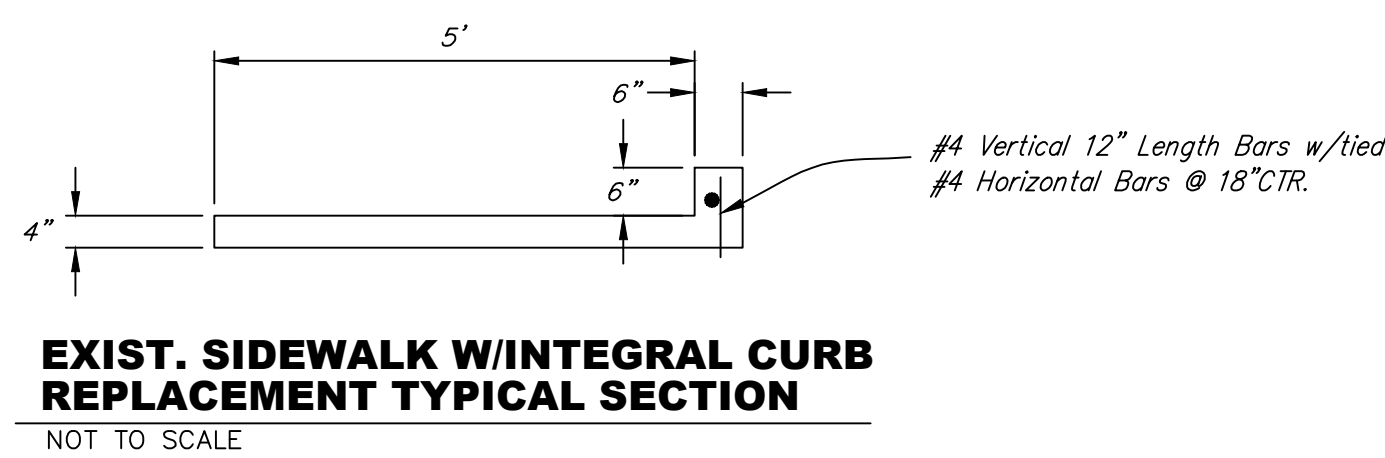
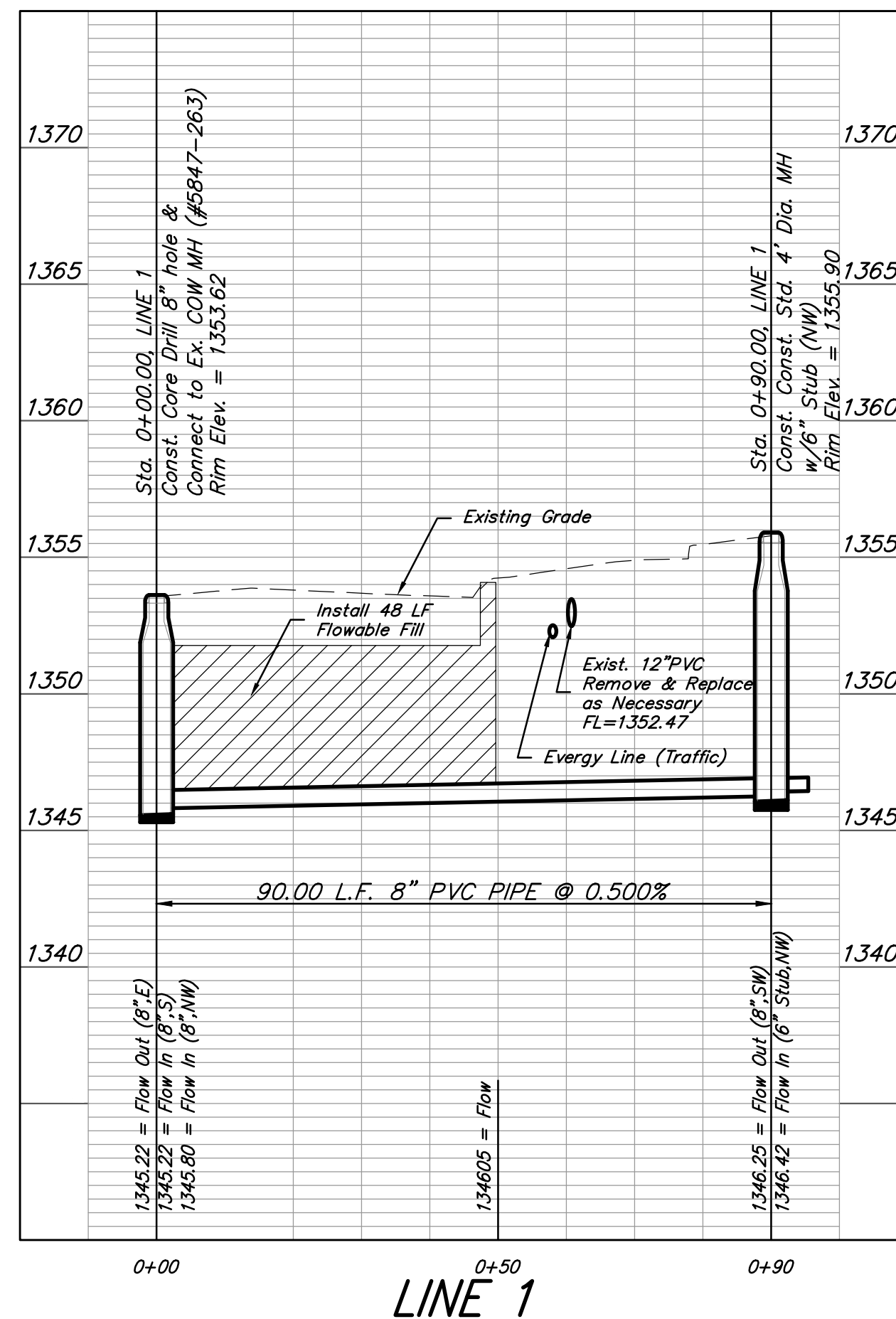
Benchmark - 2
"+" Chisled on Top of Traffic Signal MH, NW corner.
Elev.=1355.10 (NAVD 88)

NOTE:

Contractor to Reshape Invert from NW to Match New. 8" Flow.

Cost of Reshaping the Invert to be included into Cost of Pipe.

Contractor to Replace excavation area with new Sod as Necessary.



UTILITY CROSSING SUMMARY		RESOLVE
AT&T	OVERHEAD & UNDERGROUND LINES CROSSING 1ST ST	NO CONFLICT
ENERGY	OVERHEAD LINE CROSSING 1ST ST	NO CONFLICT
ENERGY	UNDERGROUND LINE SERVING TRAFFIC SIGNAL TERMINAL	SAN. SEWER CROSSES ENERGY LINE NOTED
CITY WATER	NONE	NO CONFLICT
CITY STORM	STORM SEWER CROSSING. REMOVE & REPLACE 12" PVC AS NECESSARY	CONFLICT NOTED
KANSAS GAS SERVICE	NONE	NO CONFLICT



Baughman Company, P.A.
Baughman

EAST BOULEVARD ADDITION
SS LINE 1
Sanitary Sewer Improvements