

K96 Highway

N=1,699,756.10
E=1,688,701.56

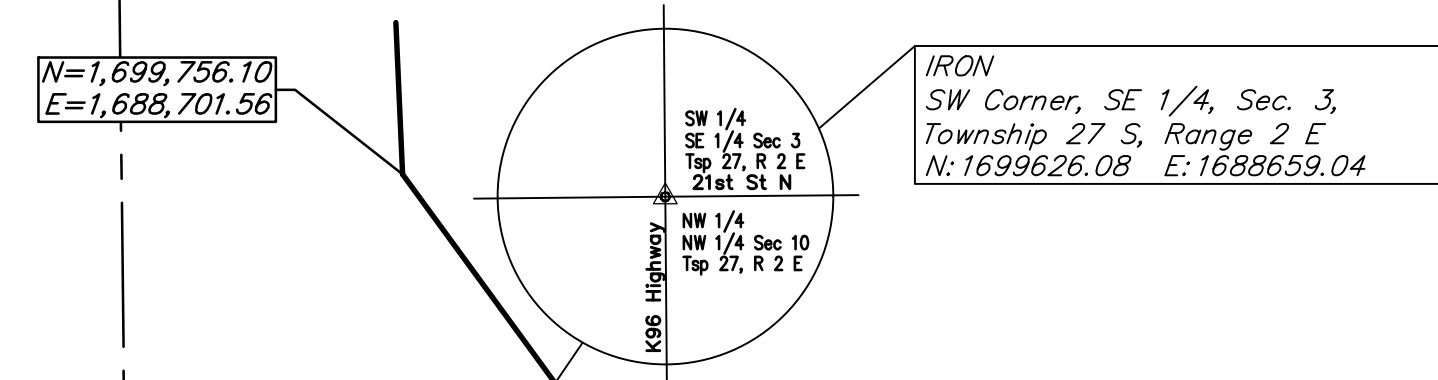
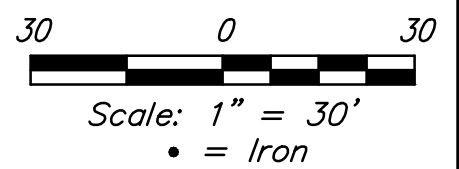
N=1,699,717.08
E=1,688,730.13

N=1,699,710.28
E=1,688,970.21

N=1,699,692.17
E=1,689,103.74

N=1,699,693.06
E=1,689,173.57

N=1,699,696.49
E=1,689,424.01



RESERVE "A"
Newspring Commercial
Addition

LOT 6
A
Newspring Commercial
Addition

RESERVE
Newspring Commercial
Addition

21st St N

LOT 6
A
Newspring Commercial
Addition

RESERVE "B"
Newspring Commercial
Addition

LOT 7
A
Newspring Commercial
Addition

LOT 8
A
Newspring Commercial
Addition

RESERVE "A"
Church of the Magdalen
2nd Addition

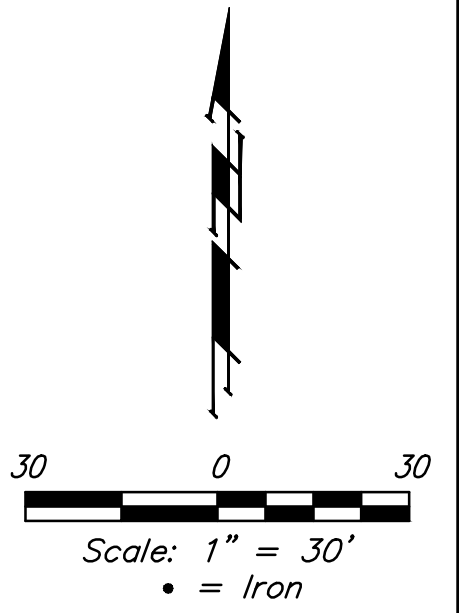
N=1,699,693.06
E=1,689,173.57

N=1,699,696.49
E=1,689,424.01

N=1,699,698.03
E=1,689,537.52

N=1,699,700.83
E=1,689,744.20

N=1,699,703.94
E=1,689,972.37



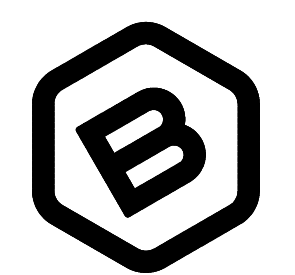
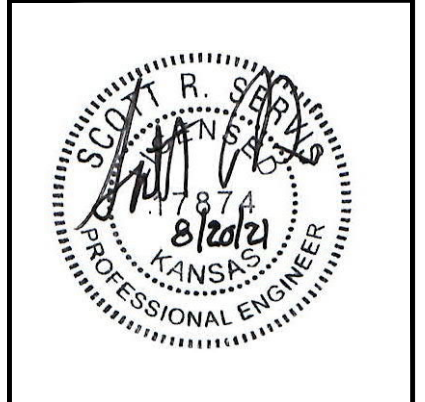
21st St N

ADD-02

BENCHMARKS

BM #1: Chiseled square, top of curb, 426.4' W. & 960.0' N. of the SE Corner, Lot 8, Block A, Newspring Commercial Addition, (N24°43'48"W, 1050.41' from SE Corner, Lot A, Block A).
Elevation=1389.22(NAVD88)

BM #2: Center of sanitary sewer manhole located 124.3' east and 11.3' north of the southwest corner of the site.
Elevation=1378.30 (NAVD88)



**BAUGHMAN
COMPANY**
315 Ellis St.
Wichita, KS 67211
316-262-7271
BaughmanCo.com

NEWSPRING
COMMERCIAL ADDITION

KEYSHEET

SIDEWALK & TURN
LANE IMPROVEMENTS

PROJECT NUMBER:
20-10-E760

DESIGN: SRS DRAWN: SRS
DATE: July 26, 2021

SHEET 3 OF 21

File: E:\Projects\NewSpring Commercial Addition\Engineering\Phase 1\STR\NSA STR Rev1.dwg