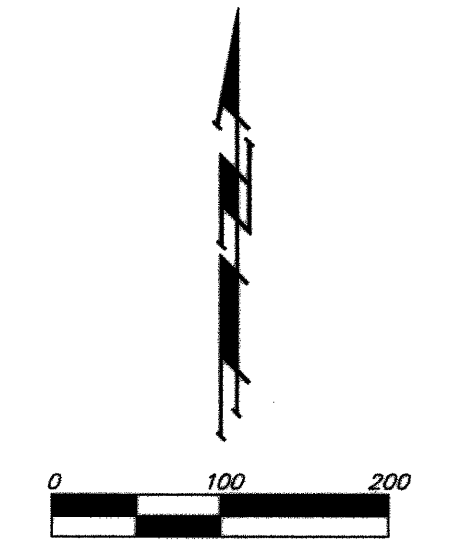
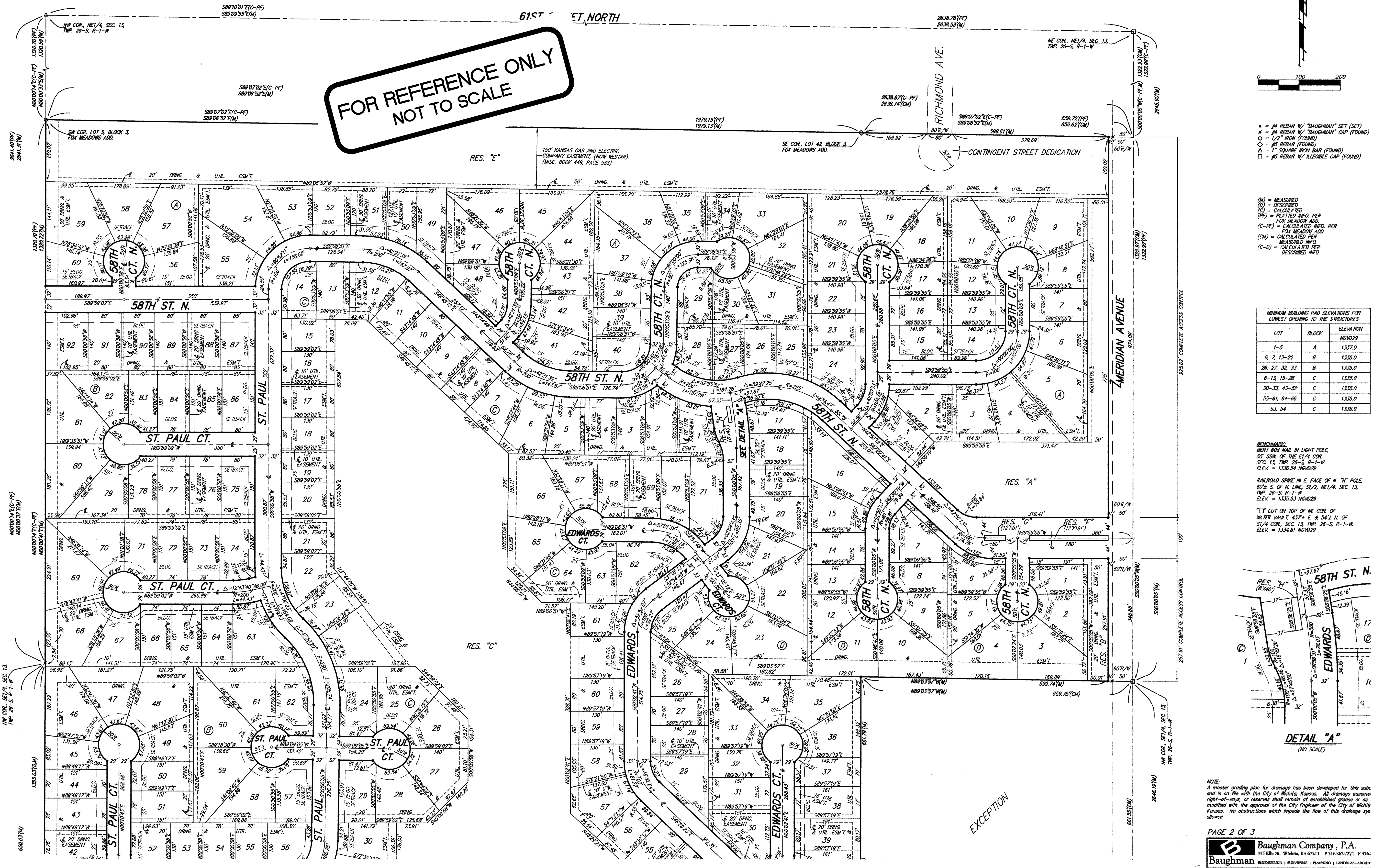


NORTHGATE ADDITION WICHITA, SEDGWICK COUNTY, KANSAS

FOR REFERENCE ONLY
NOT TO SCALE



- = #4 REBAR W/ "BAUGHMAN" SET (SET)
- = #4 REBAR W/ "BAUGHMAN" CAP (FOUND)
- = 1/2" IRON (FOUND)
- = #5 REBAR (FOUND)
- △ = 1" SQUARE IRON BAR (FOUND)
- = #5 REBAR W/ IRREGULAR CAP (FOUND)

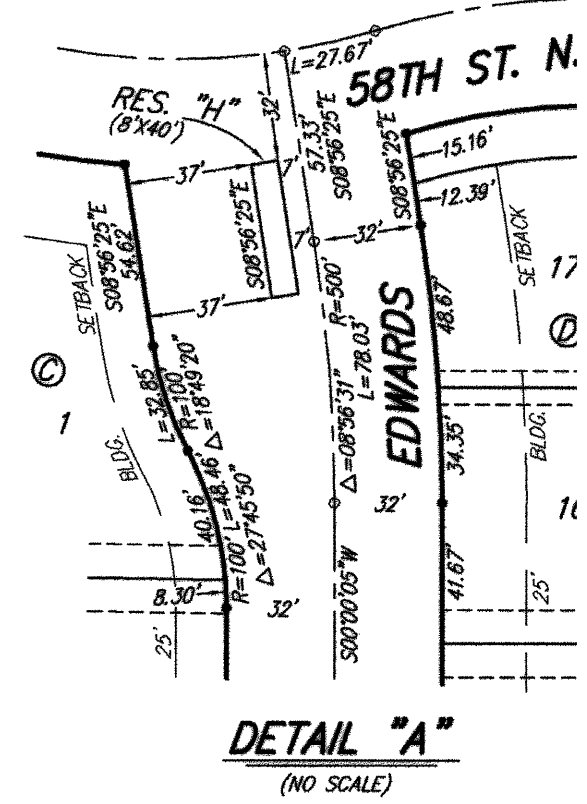
- (M) = MEASURED
- (C) = CALCULATED
- (PF) = PLATTED INFO. PER FOX MEADOW ADD.
- (C-PF) = CALCULATED INFO. PER FOX MEADOW ADD.
- (CM) = CALCULATED PER MEASURED INFO.
- (C-D) = CALCULATED PER DESCRIBED INFO.

MINIMUM BUILDING PAD ELEVATIONS FOR LOWEST OPENING TO THE STRUCTURES		ELEVATION
LOT	BLOCK	NOV29
1-5	A	1,337.0
6, 7, 13-22	B	1,335.0
26, 27, 32, 33	B	1,335.0
6-13, 15-28	C	1,335.0
30-33, 43-52	C	1,335.0
55-61, 64-66	C	1,335.0
53, 54	C	1,336.0

BENCHMARK:
BENT ROD NAIL IN LIGHT POLE,
55' SSW OF THE E/4 COR.,
SEC. 13, TWP. 26-S, R-1-W.
ELEV. = 1338.54 NOV29

RAILROAD SPIKE IN E. FACE OF N. 7" POLE
80'± S. OF N. LINE, S/2, NE/4, SEC. 13,
TWP. 26-S, R-1-W.
ELEV. = 1335.93 NOV29

"T" CUT ON TOP OF NE COR. OF
WATER VALVE 4.37' E & 54.1' N. OF
S/4 COR., SEC. 13, TWP. 26-S, R-1-W.
ELEV. = 1334.81 NOV29



NOTE:
A master grading plan for drainage has been developed for this subd and is on file with the City of Wichita, Kansas. All drainage easements right-of-ways, or reserves shall remain established grades or as modified with the approval of the City Engineer of the City of Wichita, Kansas. No obstructions which impede the flow of this drainage are allowed.

BAUGHMAN COMPANY

315 Ellis St.
Wichita, KS 67211
316-262-7271
BaughmanCo.com

NORTHGATE ADDITION
Phase 4B

**COPY OF
PLAT**

STREET
IMPROVEMENTS
PROJECT NUMBER:

DESIGN: DRAWN:
DATE: July 8, 2021
SHEET OF

17 18

File: E:\Projects\Northgate\Engineering\Phase 4B\STR\STR.DWG