

GENERAL NOTES:

- The Contractor shall comply with all applicable safety regulations. All construction shall be completed following current City Standard Specifications and Special Provisions.
 - Maintain a minimum of 10-foot horizontal separation between all water lines (mains and services) and all fire hydrants and all sanitary sewer lines (mains, services, and manholes). All separation distances are to be measured from edge-to-edge, at the closest point.
 - Maintain a minimum of 2-foot vertical separation between all water lines (mains and services) and all gravity sanitary sewer lines (mains, services, and manholes) at crossings. All separation distances are to be measured from edge-to-edge, at the closest point.
 - Maintain a minimum of 2-foot vertical separation between all water lines (mains and services) and all pressurized sanitary sewer lines (force mains and services) at crossings. Waterlines must always be placed above pressurized sanitary sewer lines where they cross. All separation distances are to be measured from edge-to-edge, at the closest point.
- Contractor will be required to provide notice to utility companies a minimum of seventy-two (72) hours prior to any excavation, as follows:

Kansas One-Call 687-2470

The Contractor must notify the following in case of an emergency:

AT&T	1-800-246-8464
Black Hills Energy	1-800-694-8989
City of Wichita Water & Sewer	1-316-219-8921
City of Wichita Stormwater	1-316-268-4090
City of Wichita Traffic	1-316-268-4034
Cox Communications	1-888-249-3530
Kansas Gas Service	1-888-482-4950
Energy	1-800-544-4857
- Utility service lines, poles, etc. are to be adjusted as necessary by others prior to construction unless the plans specifically call for their adjustment by the Contractor or unless the plans specifically identify a utility to be adjusted by its owner during construction. Existing utilities and their location, as shown on the plans, represent the best information obtainable for design. The Contractor will be required to work around existing utilities within the right-of-way which do not conflict with proposed construction.
- Rubble from the removal of miscellaneous structures and excess excavation which is to be wasted shall be disposed of on sites to be provided by the Contractor. These sites shall be approved by the Engineer as to suitability, appearance and site location. Locations, in the opinion of the Engineer, that will leave an unsightly appearance will not be approved. All disposal sites must be approved by the Kansas Department of Health and Environment. Material either stockpiled or disposed of in a flood plain will require a Kansas State Board of Agriculture permit. Any material dumped in waters of the United States or wetlands is subject to U.S. Corps. of Engineers permitting regulations. Any material buried or stockpiled beyond approved construction limits will require additional archaeological investigations unless buried in a previously approved borrow location.
- Trees and shrubs in public right-of-way which are in direct conflict with proposed new construction shall be removed by the Contractor with the City Engineer's approval. Trees and shrubs which are not in direct conflict with proposed new construction shall be saved and protected from damage.
- The Contractor shall give all property owners and/or tenants of developed property abutting the construction of this project a minimum of ten (10) days notice prior to start of construction.
- The Contractor shall be responsible for preserving property irons. The Contractor will be required to re-establish any property irons which are damaged or destroyed by his construction operations. Such irons shall be re-established by a licensed land surveyor in accordance with state laws
- All elevations shown are NAVD88.
- All areas disturbed during construction that will not be under proposed pavement shall be restored to match existing conditions.
- Opening and closing of water valves shall be done slowly to prevent damage to the water distribution system from water hammer. All valves closed by the contractor must be reopened as new construction permits. The project inspector must ascertain that any valve closed by the Contractor is reopened. The contractor will be permitted to operate water valves only when the project inspector assigned to the project is present.
- The Contractor shall lay a Tracer Wire and Set Test Stations along all water pipe installed in accordance with City Specifications and Tracer Wire Detail on detail sheet WL-101, cost is subsidiary to pipe installation.
- The Contractor shall protect from damage and support existing utilities through construction as approved by the utility owner and the Engineer at the contractor's expense.
- Contractor shall limit the extent of trench openings overnight and weekends to less than 50 feet.
- All existing and proposed erosion control measures including silt fencing, erosion control mat, straw bales, inlet barriers, and const. entrance shall be maintained throughout construction by the contractor and until project is accepted by the City of Wichita. The on-site engineer shall complete weekly reports on the status of erosion control measures. The contractor shall be required to comply with maintenance and/or replacement of erosion control measures as determined by the on-site engineer until project is accepted by City of Wichita. Maintenance and/or replacement of erosion control measures to be paid by L.S. bid item "Maintain Existing BMPs".
- All disturbed areas are to be seeded as follows:

Seed --- Rye grass; 5 lbs./1000 Sq. Ft.

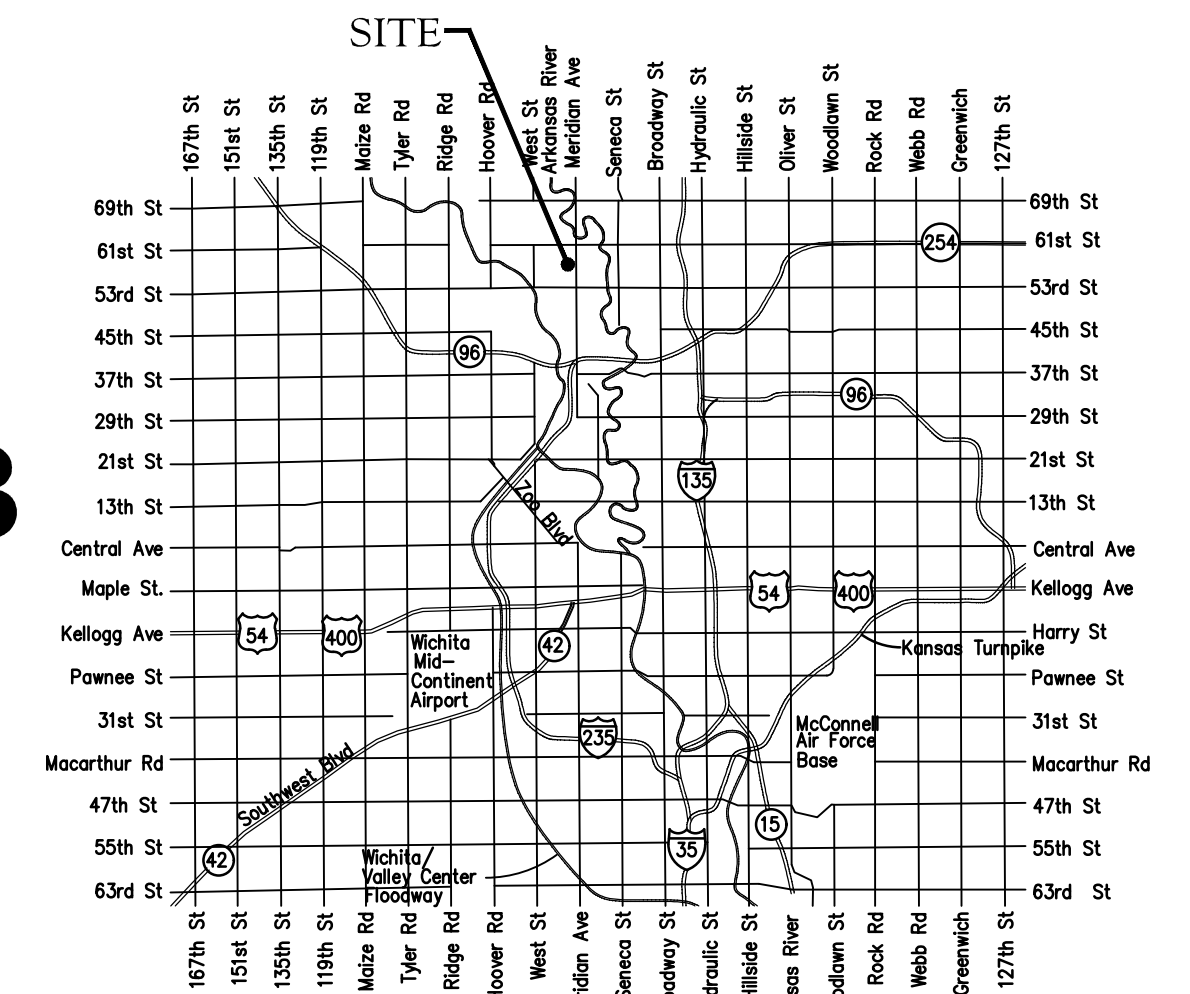
All costs associated with seeding including mobilization, preparation of ground, seeding, fertilizing, mulching, etc. shall be included in the L.S. bid item "Seeding".
- The developers for this project are Jay W. Russell, P.O. Box 75337, Wichita, KS 67272 (316)722-2417 jrussellco.com and Ritchie Development, Kevin Mullen, (316)684-7300.
- The Northgate Addition plat was completed in NGVD29 datum. The Northgate 2nd & 4th Addition plats were completed in NAVD88 datum. These plans are in NAVD88 datum. To convert from NGVD29 to NAVD88 add 0.39'.

18. Excess excavation shall remain on-site and be spread or stockpiled at a location determined by the engineer.

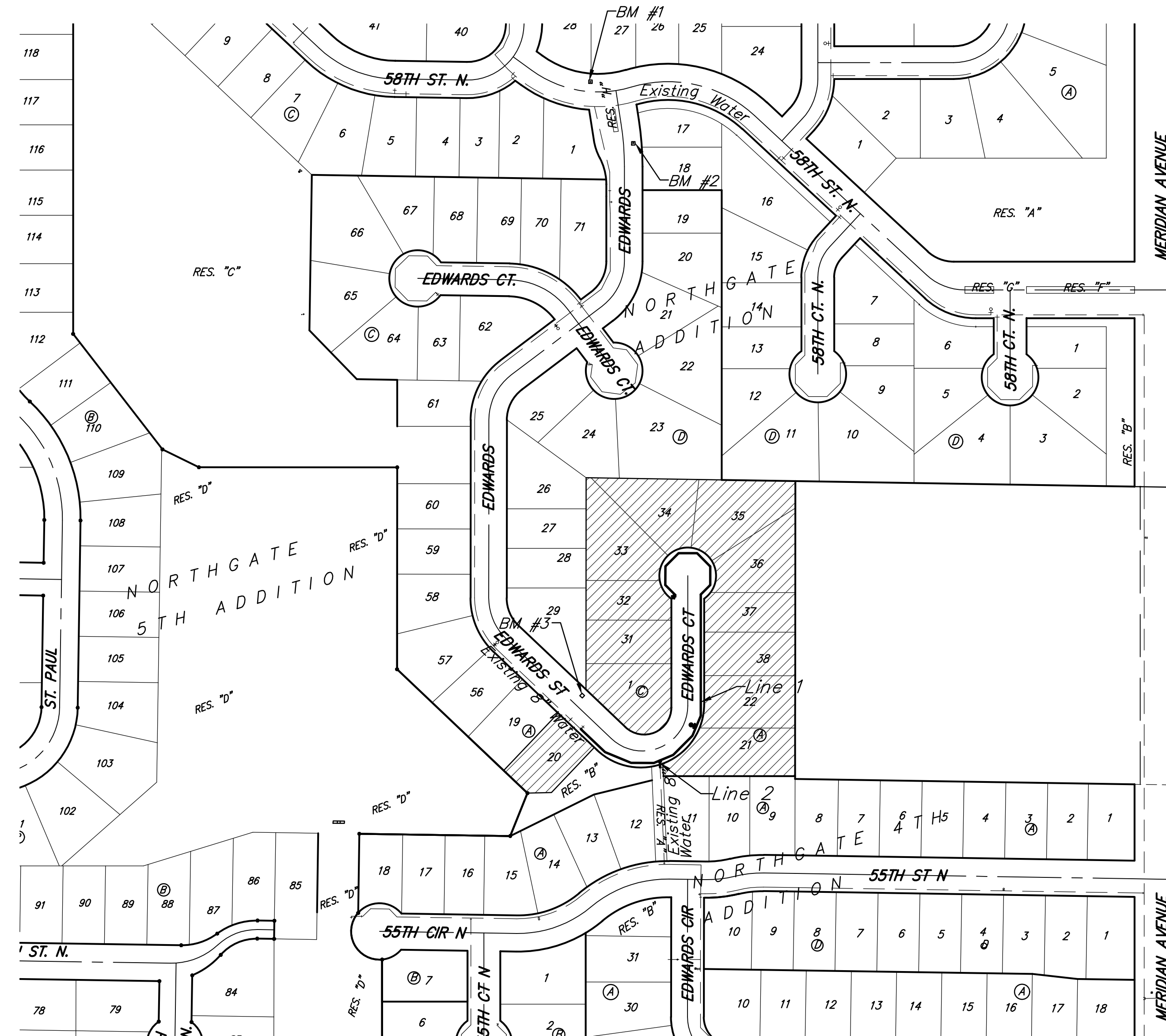
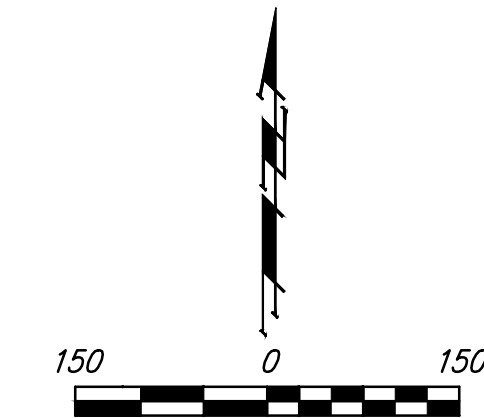
19. Water distribution system project numbers 448-2020-004503 & 448-2020-004499 need to be accepted prior to this project being placed into service.

WATER DISTRIBUTION SYSTEM to serve NORTHGATE ADDITION & NORTHGATE 4th ADD. Ph. 4B CITY OF WICHITA, KANSAS

Gary Janzen, P.E. City Engineer
Project Number 448-2020-026827
Org Code 47112820
Munis Number E1069



Vicinity Map

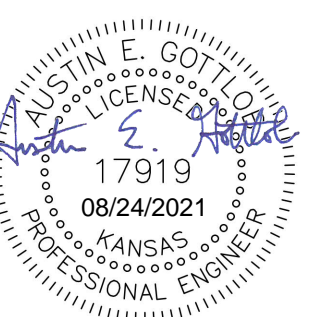


Benchmarks

- BM #1: "□" Cut on top of curb adjacent to the SE Cor. Lot 28, Block A, Northgate Addition. Elev. = 1339.82 NAVD88
- BM #2: "□" Cut on top of curb, adjacent to the SW Cor. Lot 17, Block D, Northgate Addition. Elev. = 1338.86 NAVD88
- BM #3: "□" Cut on curb inlet, adjacent to the SW Cor. Lot 1, Block C, Northgate 4th Addition. Elev. = 1336.32 NAVD88

Sheet Index

Title Sheet	1
Lines 1 & 2	2
Erosion Control Plan	3
Std. Water Assembly Detail	4
Miscellaneous Water Details	5
Erosion Control BMP Details	6-10
Coordinate Sheet	11
Copy of Plat	12-13



August 23, 2021

BAUGHMAN COMPANY
315 Ellis St. Wichita, KS 67211 316-262-7271
BaughmanCo.com

Benefit District

