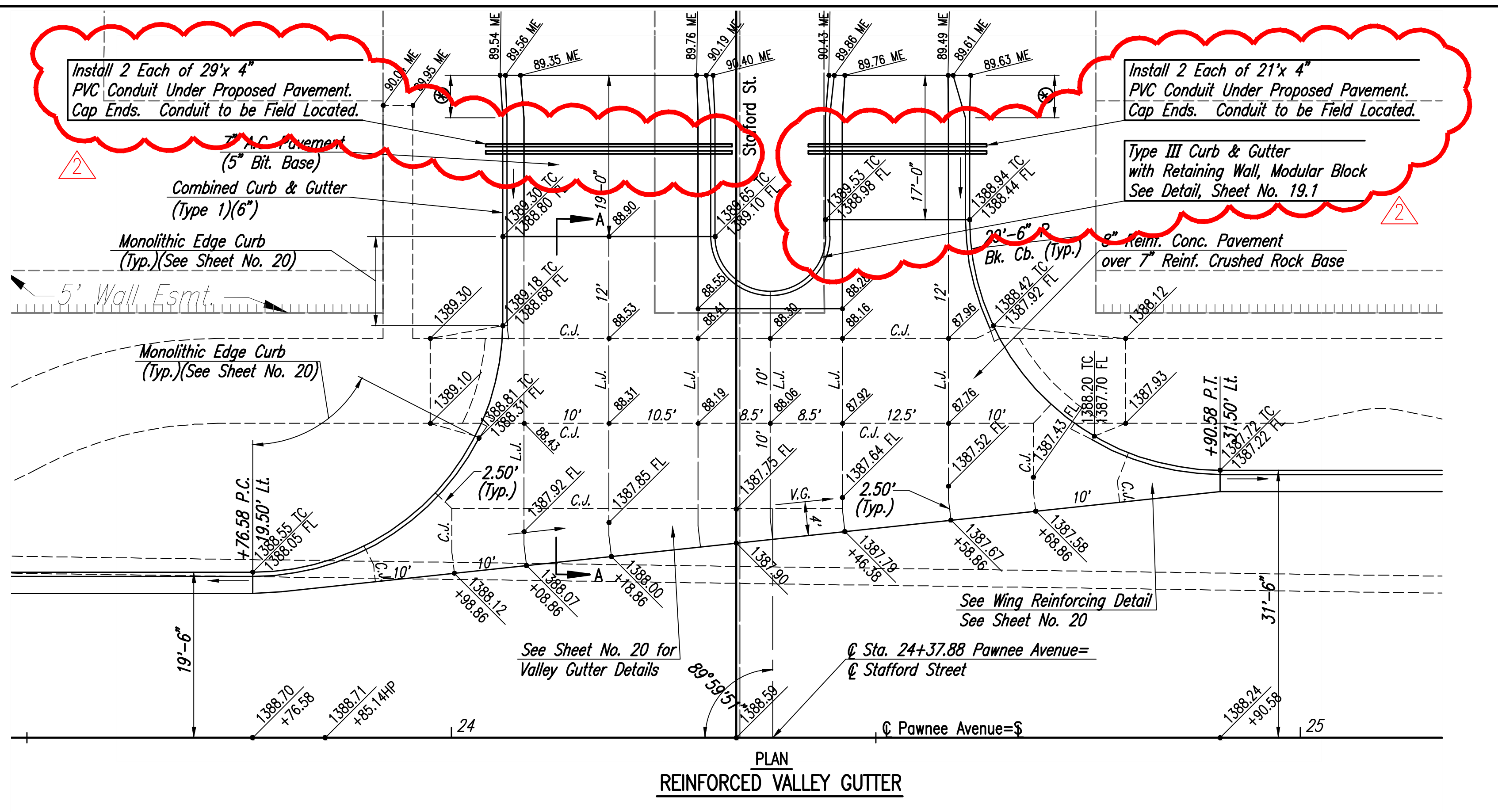
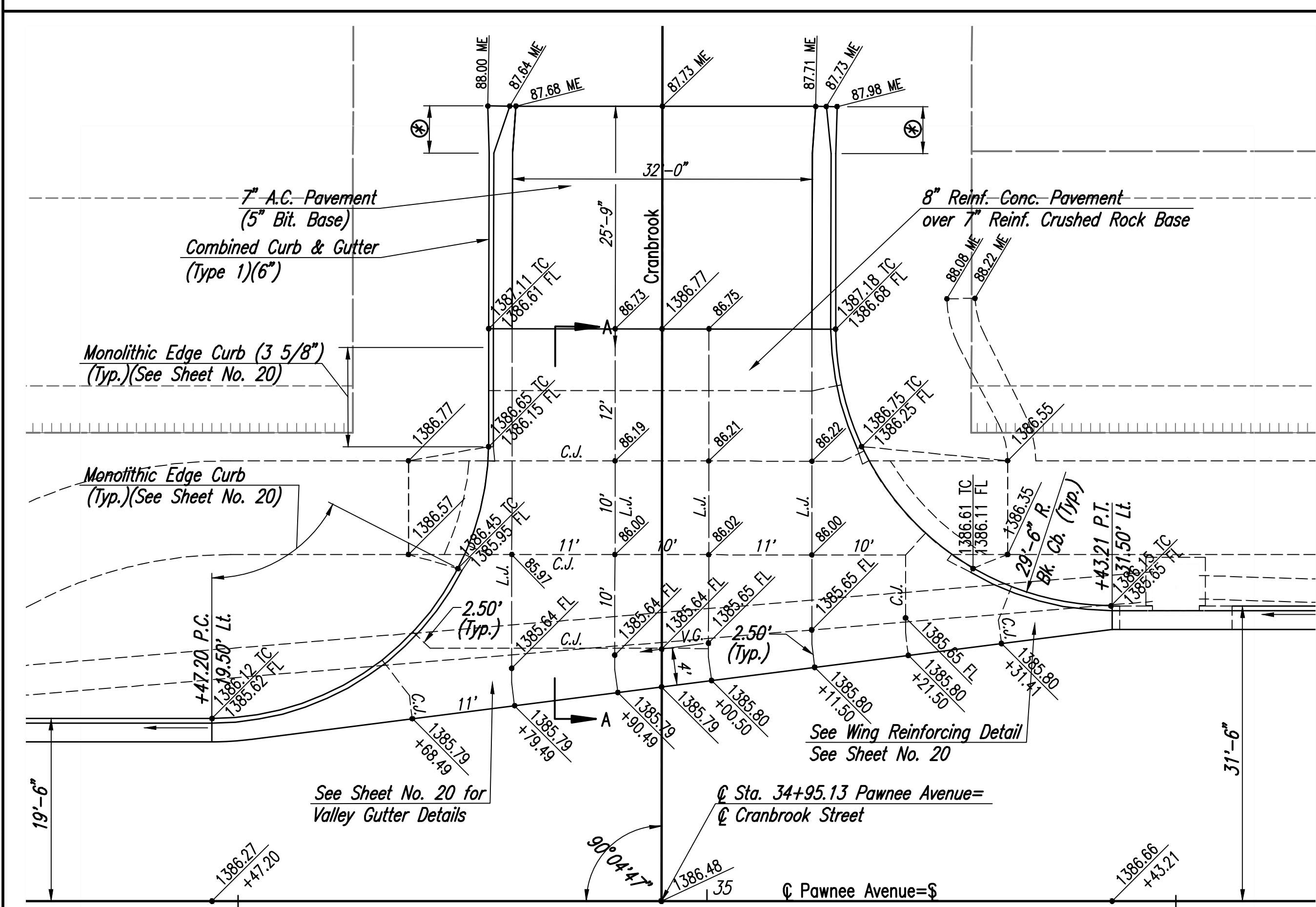


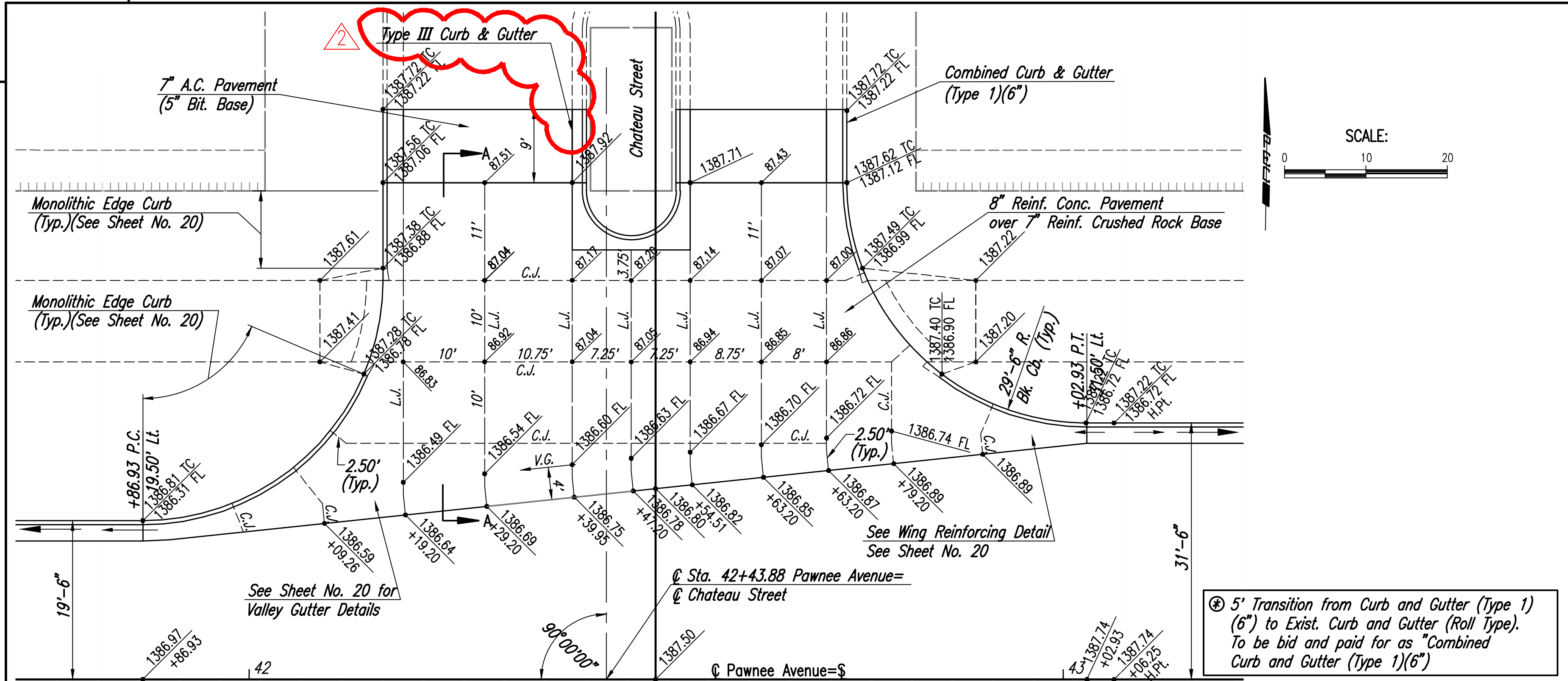
PLAN INTERSECTION PLAN



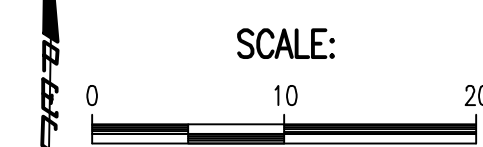
PLAN REINFORCED VALLEY GUTTER



PLAN REINFORCED VALLEY GUTTER

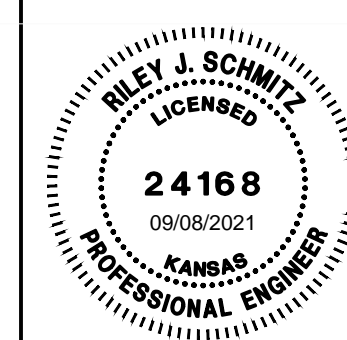


PLAN REINFORCED VALLEY GUTTER



⊗ 5' Transition from Curb and Gutter (Type 1) (6") to Exist. Curb and Gutter (Roll Type). To be bid and paid for as "Combined Curb and Gutter (Type 1)(6")"

Sowed 08-27-2021 3:52:39 PM by BILL SEYSON  
 Plot Scale 1:1 08-27-2021 3:53:15 PM by BJS  
 U:\Wichita-Civil\2017\171395\001\Main-Trans\Drawings\REV\171395-001-19C-VALLEY GUTTER PLANS



2 Type III Curb, Retain Wall, and 4" PVC Conduit		RJS	8-26-21
No.	Revision	By	Date
PAWNEE AVENUE FROM WEBB TO GREENWICH PAVING AND INCIDENTAL DRAINAGE IMPROVEMENTS			
<b>VALLEY GUTTER PLANS</b>			
GARY JANZEN, P.E.—CITY ENGINEER CITY OF WICHITA PROJECT NO. 472-85434			
PROFESSIONAL ENGINEERING CONSULTANTS, P.A. 303 SOUTH TOPEKA WICHITA, KS 67202 316-262-2691 www.pec1.com			
Designed by	RJS	Job No.	171395-002
Drawn by	BJS, CP	Date	APRIL 2021
			SHT. 19 of 133