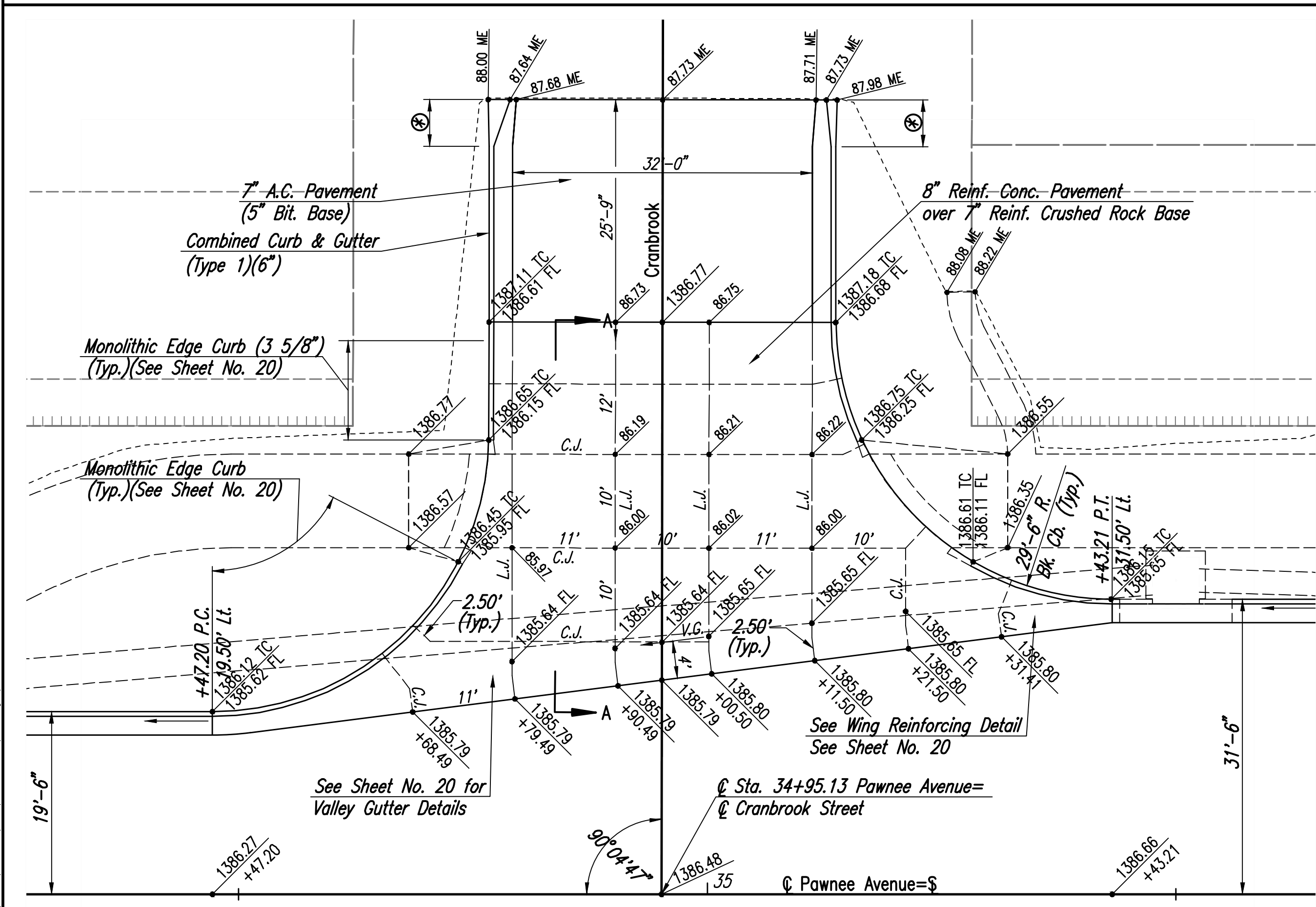
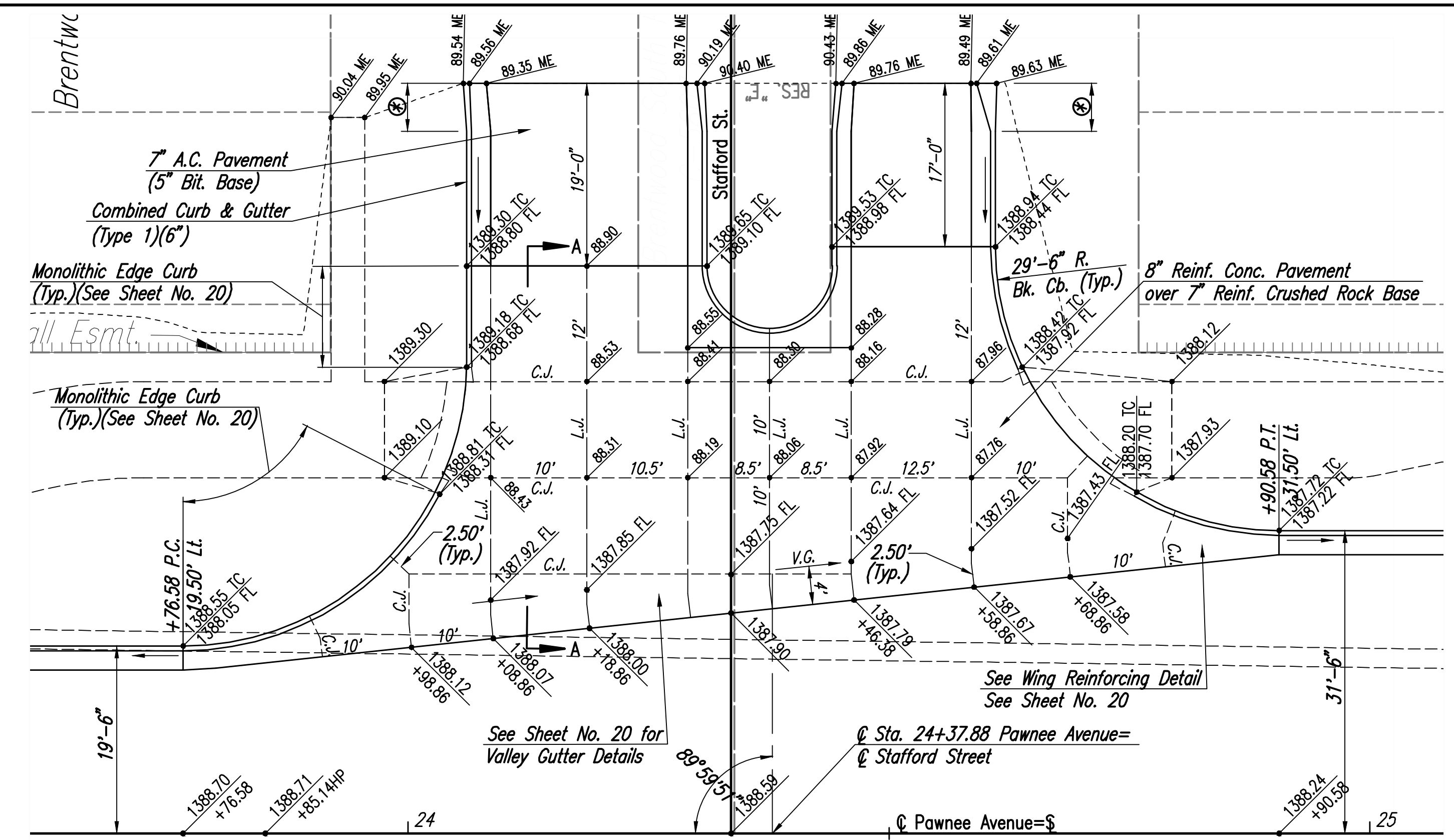


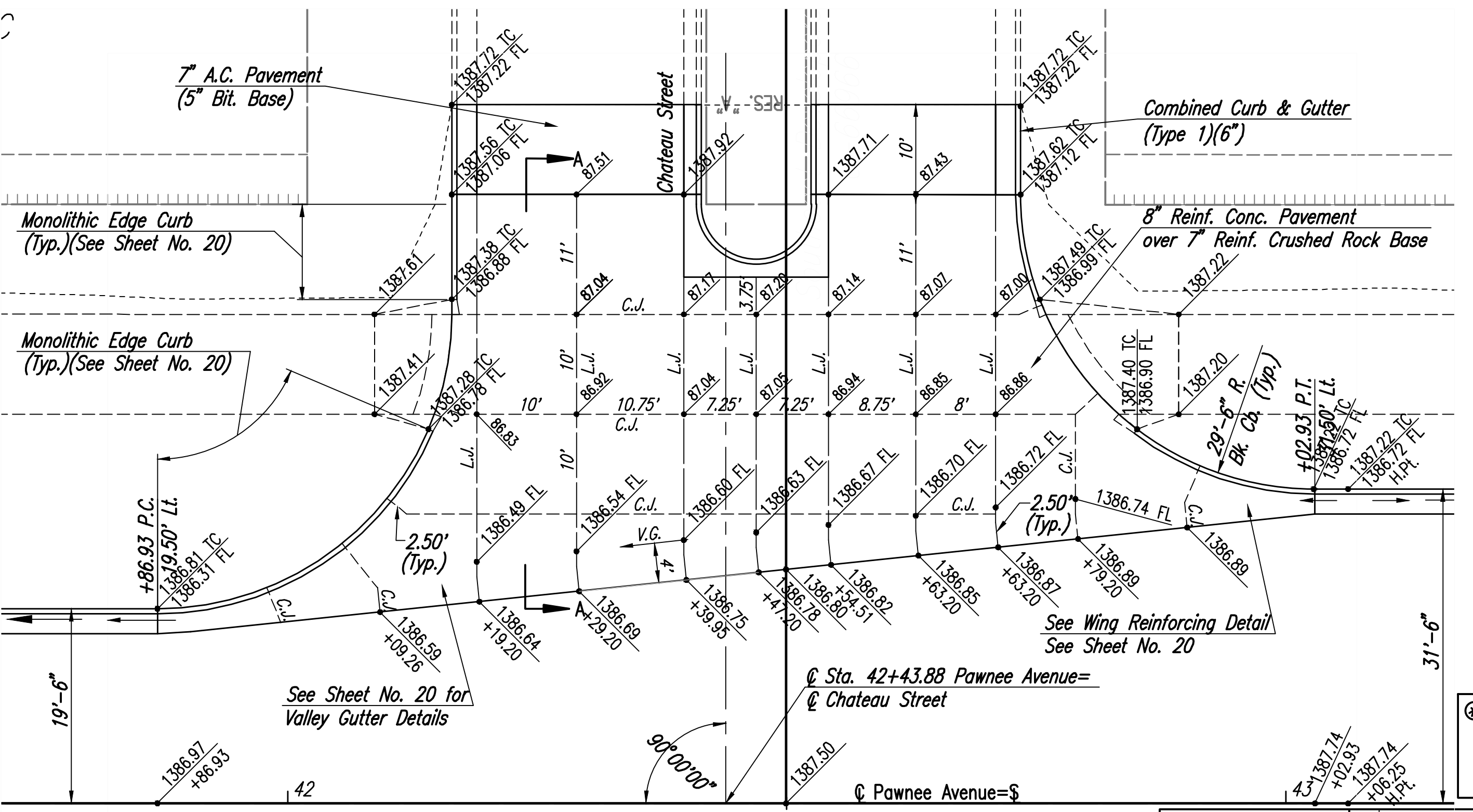
PLAN INTERSECTION PLAN



PLAN REINFORCED VALLEY GUTTER

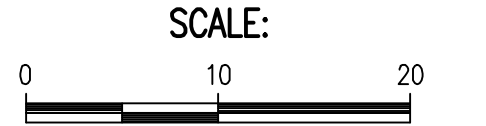


PLAN REINFORCED VALLEY GUTTER

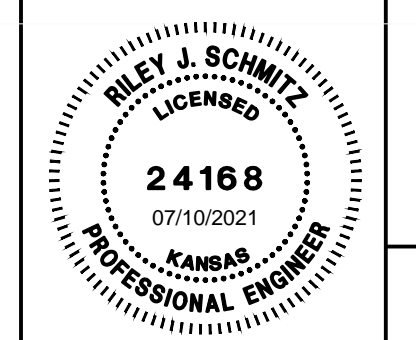


PLAN REINFORCED VALLEY GUTTER

5' Transition from Curb and Gutter (Type 1) (6") to Exist. Curb and Gutter (Roll Type). To be bid and paid for as "Combined Curb and Gutter (Type 1) (6")"



Sowed 04-09-2021 5:18:05 PM by: AGRISTY SKAGGS  
 Plot Scale 1:1 07-09-2021 2:18:54 PM by: BJS  
 U:\wchita-civil\2017\171395\001\main-rein-valley-gutter-plans



Revision		By		Date	
PAWNEE AVENUE FROM WEBB TO GREENWICH PAVING AND INCIDENTAL DRAINAGE IMPROVEMENTS <b>VALLEY GUTTER PLANS</b> GARY JANZEN, P.E.—CITY ENGINEER CITY OF WICHITA PROJECT NO. 472-85434					
PROFESSIONAL ENGINEERING CONSULTANTS, P.A. 303 SOUTH TOPEKA WICHITA, KS 67202 316-262-2891 www.pec1.com					
Designed by	RJS	Job No.	171395-002	Sht. 19 of 134	
Drawn by	BJS, CP	Date	APRIL 2021		