

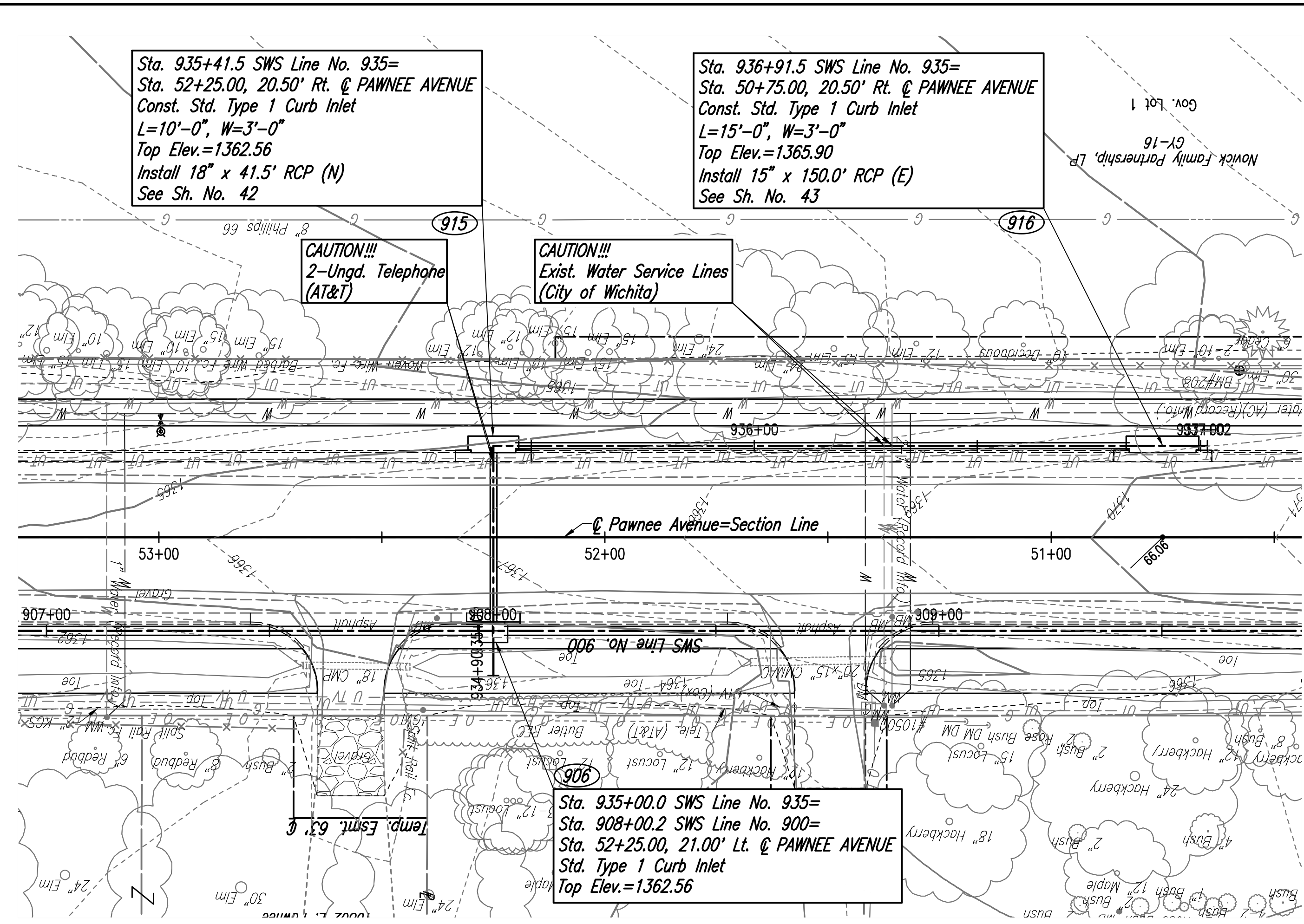
CHECKED  
CHECKED

BY: \_\_\_\_\_ DATE: \_\_\_\_\_

CHECKED  
CHECKED

BY: \_\_\_\_\_ DATE: \_\_\_\_\_

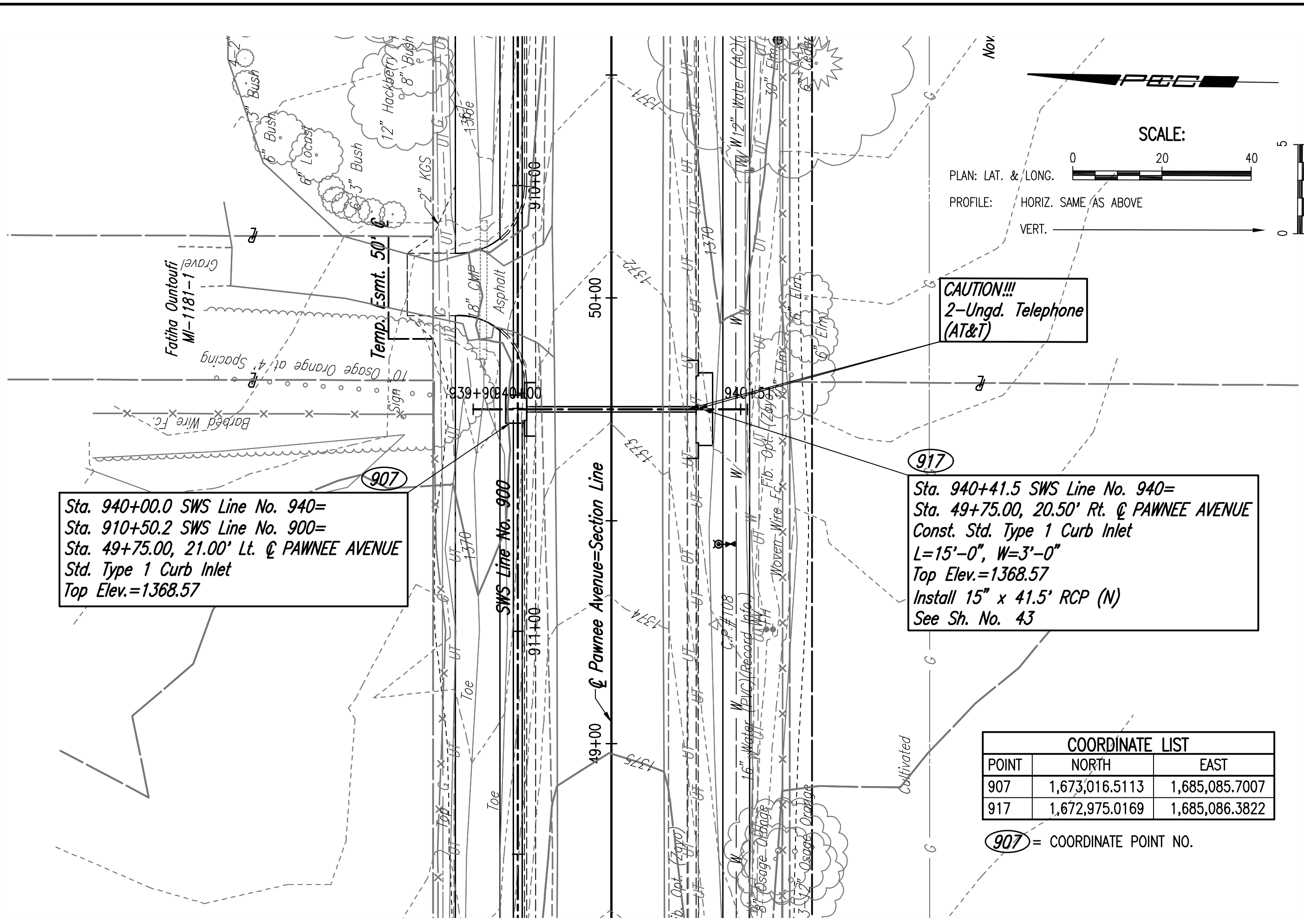
Saved: 02-10-2021 2:26:55 PM by BILL SEASON  
 Plot Scale: 1" = 40' - 09-2021 2:26:01 PM by BUS  
 U:\wchita-civil\2017\171395-001\Drawings\171395-001-41-SWS Line Nos. 935 & 940



COORDINATE LIST

POINT	NORTH	EAST
906	1,673,020.6172	1,685,335.6669
915	1,672,979.1228	1,685,336.3485
916	1,672,976.6593	1,685,186.3688

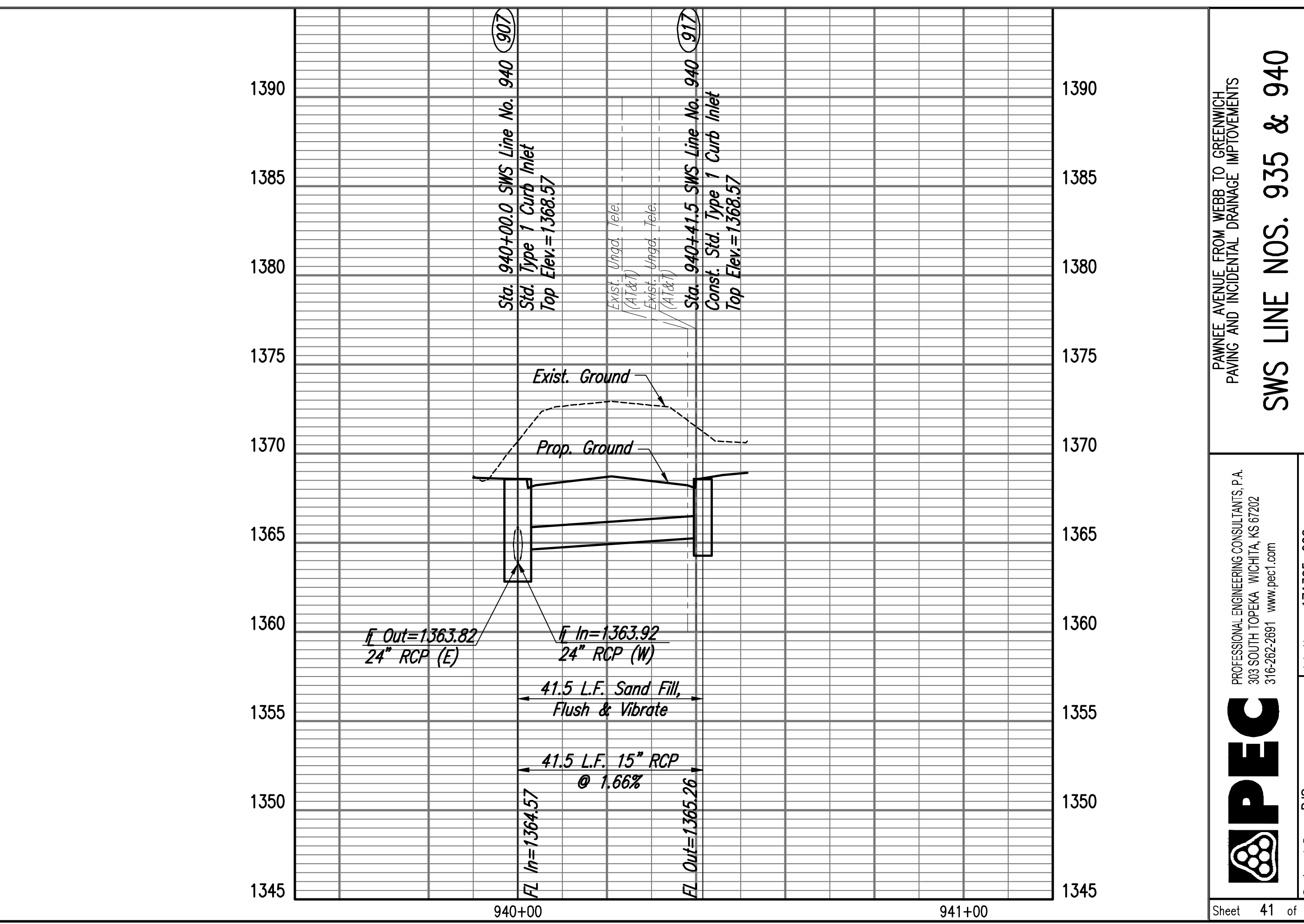
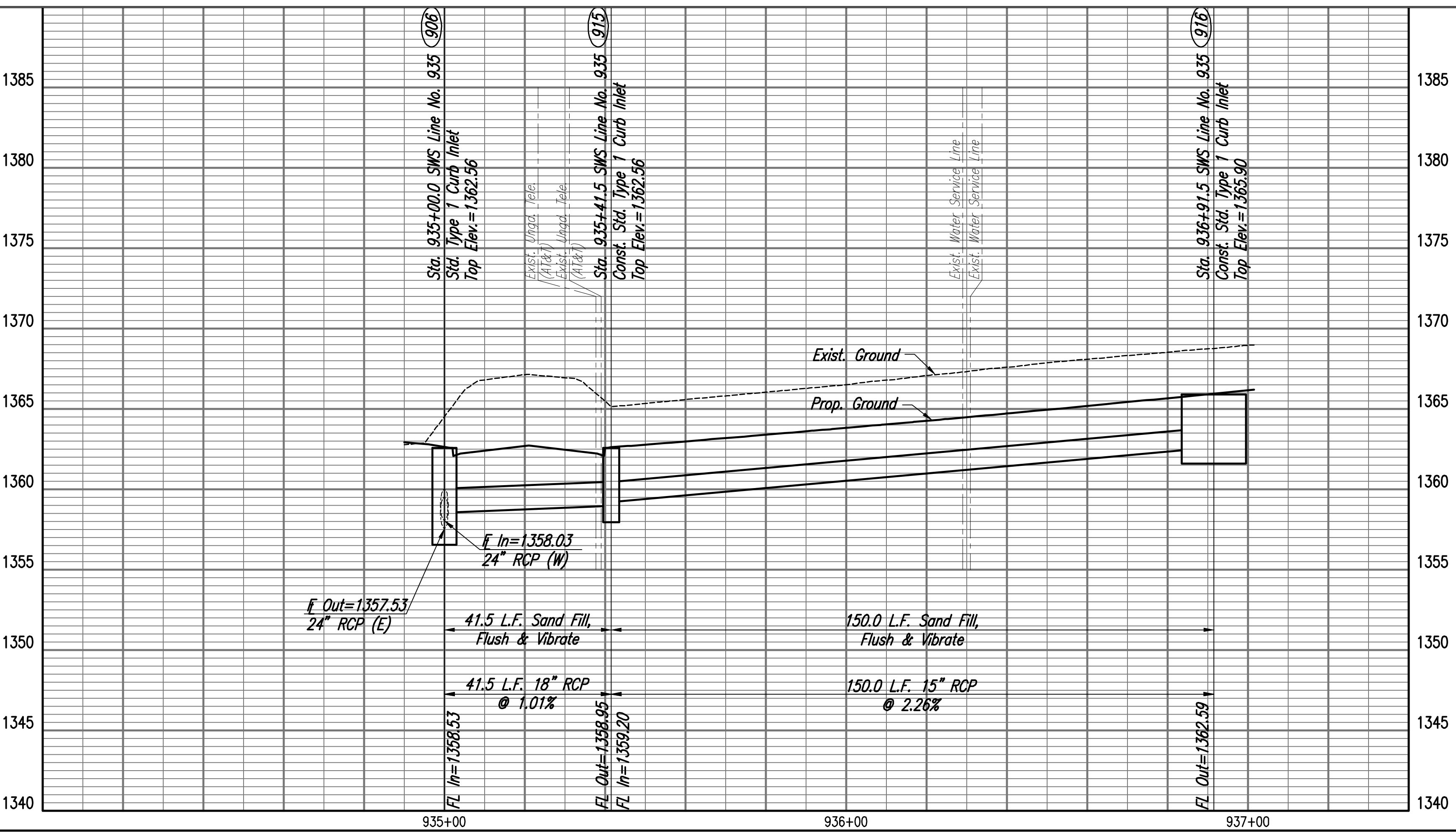
906 = COORDINATE POINT NO.



COORDINATE LIST

POINT	NORTH	EAST
907	1,673,016.5113	1,685,085.7007
917	1,672,975.0169	1,685,086.3822

907 = COORDINATE POINT NO.



PAWNEE AVENUE FROM WEBB TO GREENWICH  
 PAVING AND INCIDENTAL DRAINAGE IMPROVEMENTS

**SWS LINE NOS. 935 & 940**

GARY JANZEN, P.E.-CITY ENGINEER  
 CITY OF WICHITA PROJECT NO. 472-85434

PROFESSIONAL ENGINEERING CONSULTANTS P.A.  
 308 SOUTH TOPEKA WICHITA, KS 67202  
 316-262-2691 www.pec.com

**PECC**

Designed By: RUS Date: 171395-002 APRIL 2021  
 Drawn By: BUS, CP

Sheet 41 of 134