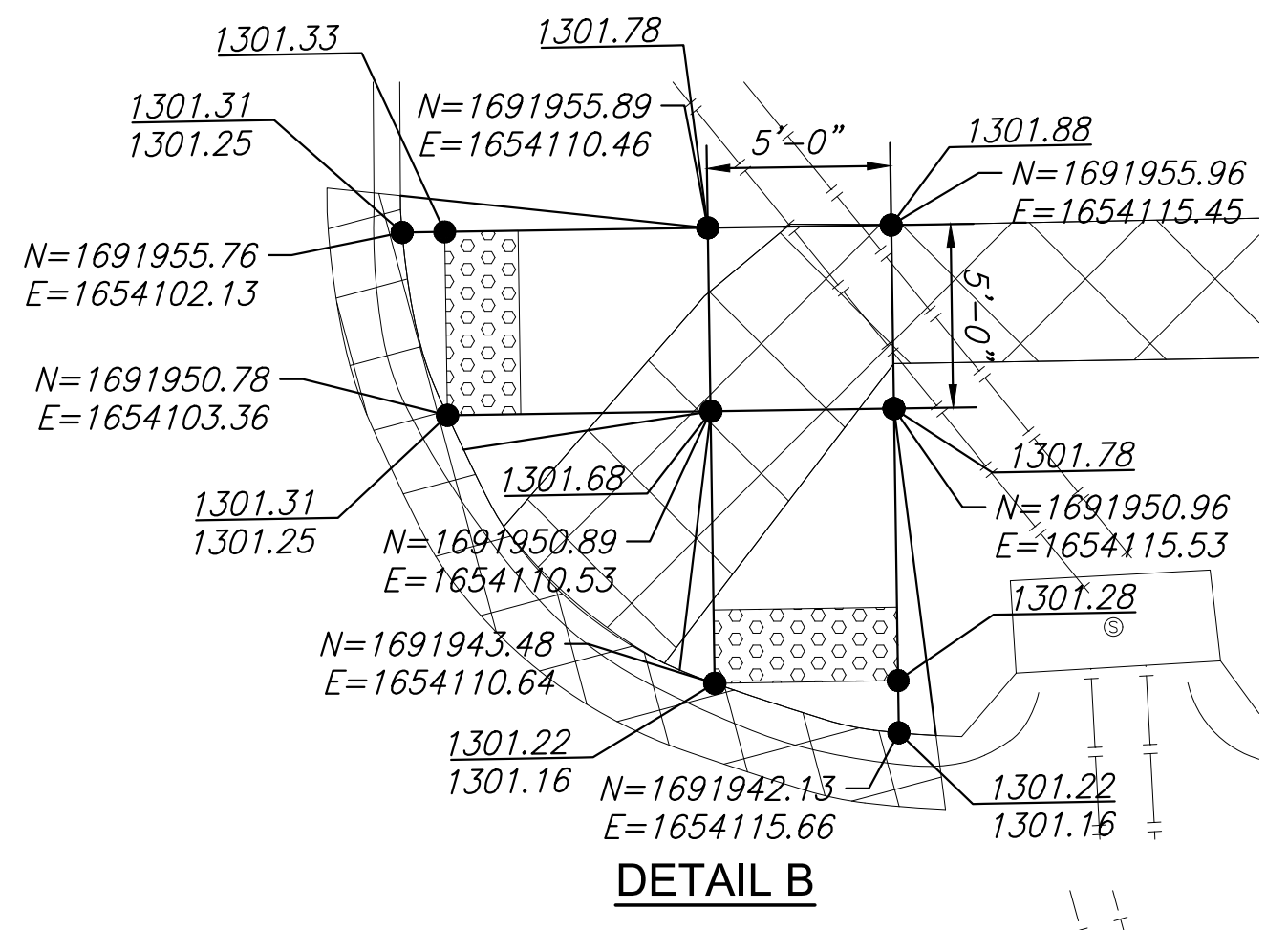
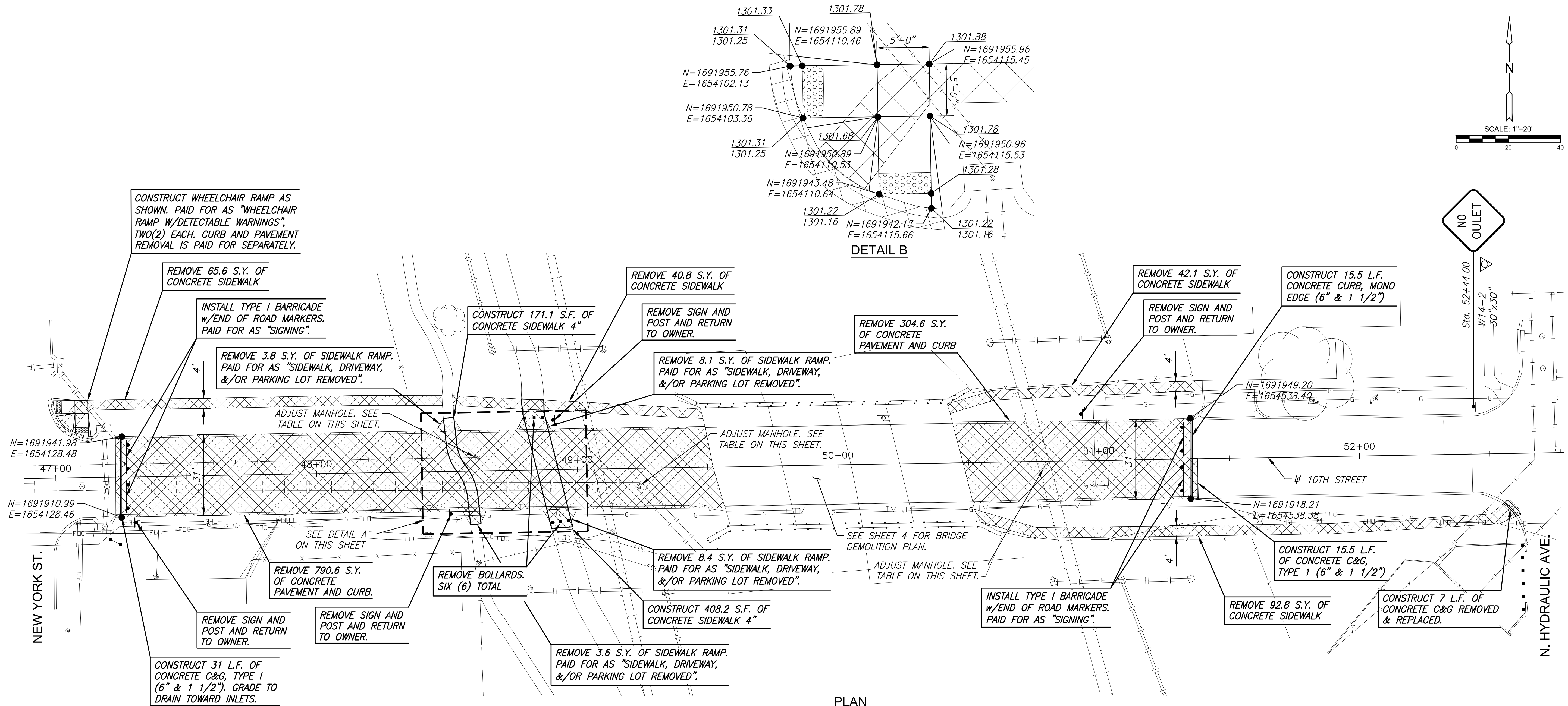
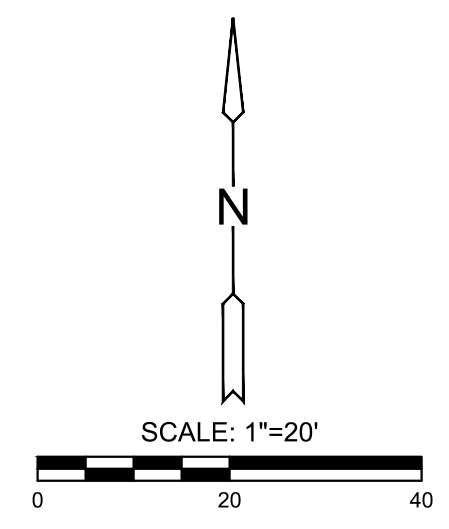


PLOTTED: Wednesday, October 13, 2021 @ 03:30PM

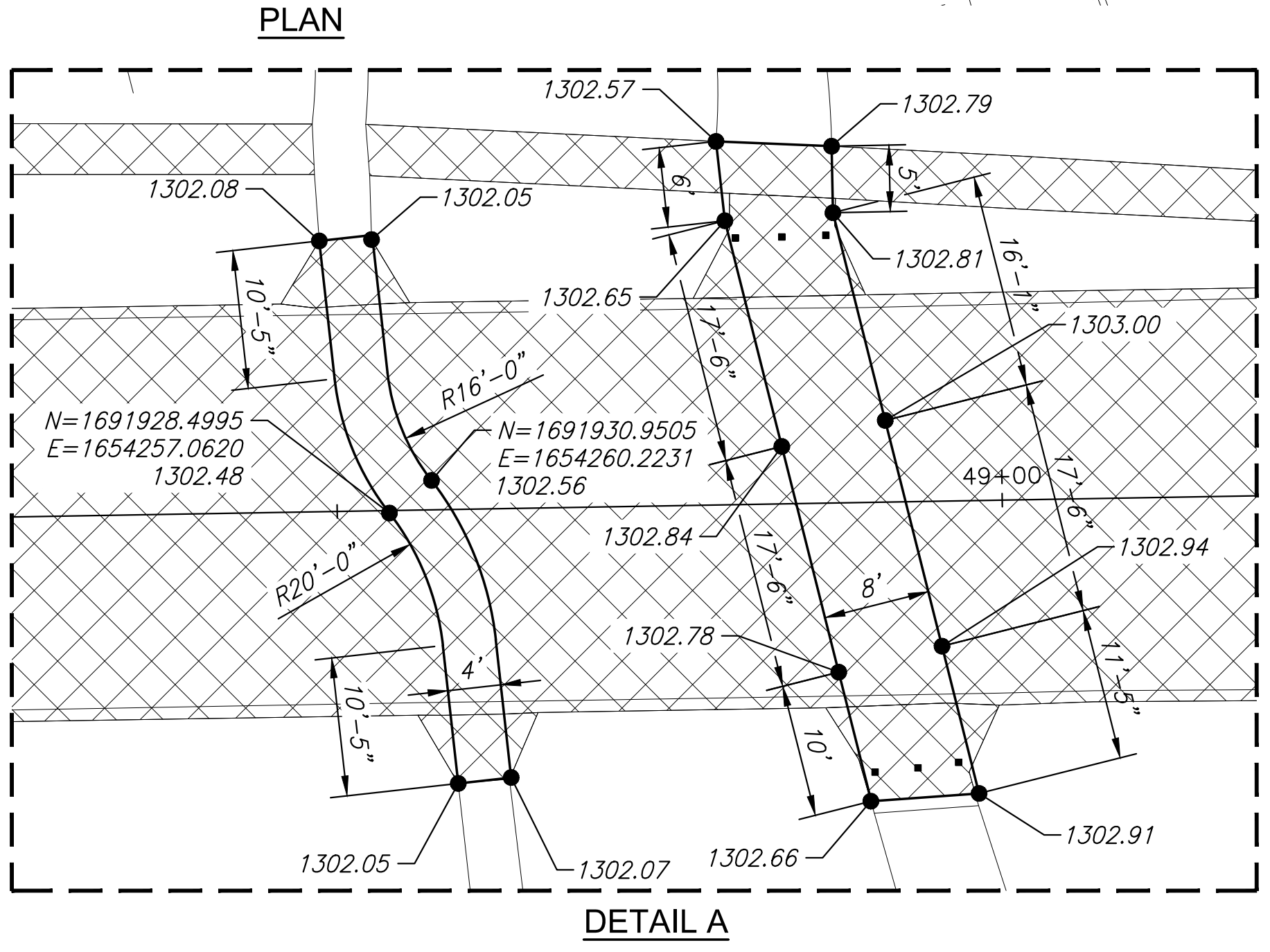
J:\PROJECTS\2019\1901010483_COW_10TH-15TH BRIDGES_190483_CAD\SHITS\005_CIVIL\PAV\19483-05-4500.DWG

PLANS FOR
10TH STREET - 15TH STREET BRIDGES
WICHITA, KS



UTILITY ADJUSTMENTS				
STATION	OFFSET	EXIST. ELEV.	PROP. ELEV.	REMARKS
48+61.71	5.2' LT.	1301.715	1302.615	W/NEW RING & COVER.
49+23.78	6.9' RT.	1303.910	1304.810	W/NEW RING & COVER.
50+79.13	2.1' RT.	1304.003	1304.903	W/NEW RING & COVER.

NOTE: MH LID SHALL SIT 0.4' HIGHER THAN FINISHED GROUND WITH A GRAVEL RING AROUND THE FRAME AS PER CITY STANDARDS. CONFIRM PROPOSED ELEVATIONS IN THE FIELD.



©2021 MKEC Engineering All Rights Reserved www.mkec.com
These drawings and their contents, including, but not limited to, all concepts, designs, & ideas are the exclusive property of MKEC Engineering (MKEC), and may not be used or reproduced in any way without the express consent of MKEC.

10TH ST PLAN

PROJECT NO.	1901010483	
DATE	JUNE 2021	
SCALE	1"=20'	
DESIGNED	DRAWN	CHECKED
JRA	RAM	JRA

NO.	REVISION	DATE

SHEET NO.
3 OF 27