

N: 1683827.2635, E: 1649669.6589  
 WL NO 1, Sta. 10+00.00=  
 TOPEKA STREET, STA. 495+31.97, 18" L  
 EXISTING 8" WATER MAIN\*  
 1- 8" X 8" TAPPING SLEEVE  
 1- 8" RJ TAPPING VALVE  
 1- 6" VALVE BOX  
 TOP VALVE BOX EL. = 1296.60  
 TAPPING SLEEVE AND VALVE TO BE  
 INSTALLED BY THE CITY.

N: 1,683,831.5544, E: 1,649,669.5820  
 STA. 10+04.29, WL NO 1  
 INSTALL 8" 45° BEND RJ (VERTICAL)  
 WITH VERTICAL THRUST BLOCKS

REMOVE AND REPLACE  
 31 L.F. OF EXIST. 8" SANITARY SEWER AND  
 INSTALL 21 L.F. SEAMLESS STEEL CASING  
 (16" MIN. DIAMETER, 0.188" MIN. THICKNESS)  
 CENTERED ON WATERLINE

N: 1,683,835.4731, E: 1,649,669.5108  
 STA. 10+08.21, WL NO 1  
 INSTALL 8" 45° BEND RJ (VERTICAL)  
 WITH THRUST BLOCKS

CAUTION !!!  
 18" RCP  
 STORM WATER SEWER

CAUTION !!!  
 1.25" GAS LINE  
 (BLACK HILLS)

CAUTION !!!  
 15" RCP  
 STORM WATER SEWER

WATER SERVICE LINE RECONNECTION (TYPICAL)  
 SEE DETAIL AND SCHEDULE, SHEET NO. C503

CAUTION !!!  
 15" RCP  
 STORM WATER SEWER

CAUTION !!!  
 BURIED FIBER OPTIC LINE  
 (AT&T)

N: 1684252.2387, E: 1649661.9388  
 WL NO 1, STA. 14+25.05=  
 TOPEKA STREET, Sta. 499+57.02, 18" L  
 REMOVE EXIST. FIRE HYDRANT TEE,  
 AND VALVE AND CONNECT TO EXIST.  
 FIRE HYDRANT ASSEMBLY.  
 INSTALL TEE & VALVE ONLY AND  
 COMPLETE TESTING (TEMPORARY  
 RESTRAINT AS REQUIRED), CONNECT  
 TO EXIST. FH ASSEMBLY AFTER TESTING  
 L= 9'  
 TOP VALVE BOX EL. = 1296.9  
 FH BURY LINE EL. = 1297.4  
 MATCH POINT

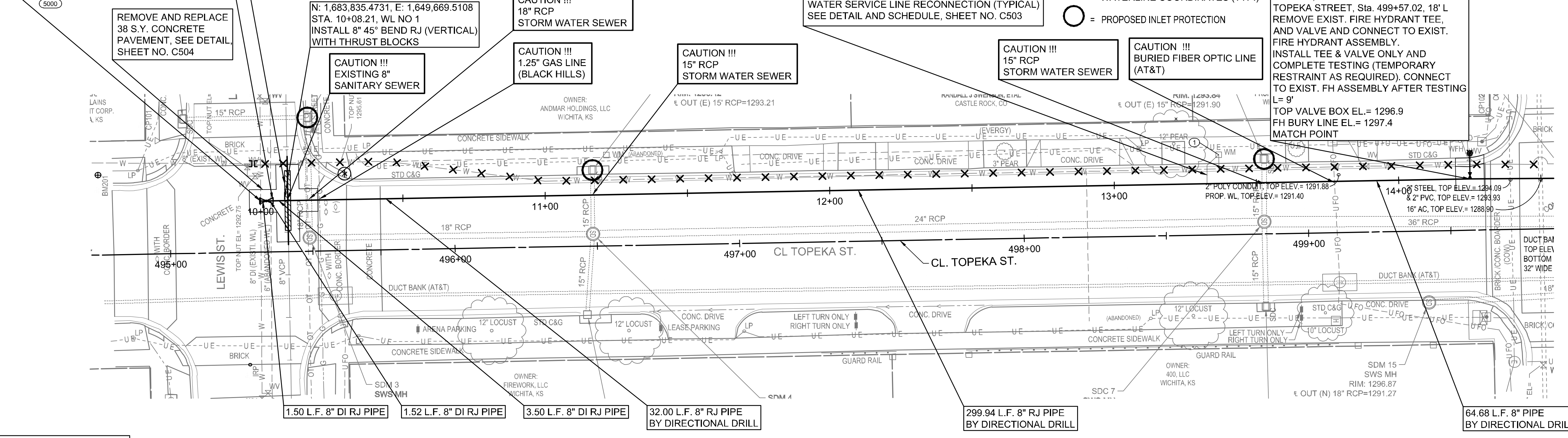
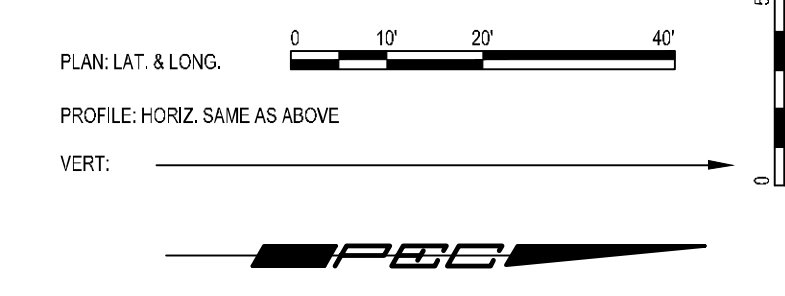
5000

REMOVE AND REPLACE  
 38 S.Y. CONCRETE  
 PAVEMENT, SEE DETAIL  
 SHEET NO. C504

\* PRIOR TO BEGINNING CONSTRUCTION, THE CONTRACTOR SHALL EXCAVATE  
 THE EXISTING WATERLINE TO VERIFY PIPE SIZE, TYPE, FITTINGS, AND  
 HORIZONTAL AND VERTICAL LOCATION. THE CONTRACTOR SHALL REPORT  
 HIS FINDINGS TO THE ENGINEER SO THAT ANY NECESSARY PLAN  
 MODIFICATIONS CAN BE MADE. ANY ADDITIONAL LABOR OR MATERIALS  
 NECESSARY TO COMPLETE THE CONNECTION SHALL BE CONSIDERED  
 SUBSIDIARY TO THE PROJECT.

LEGEND

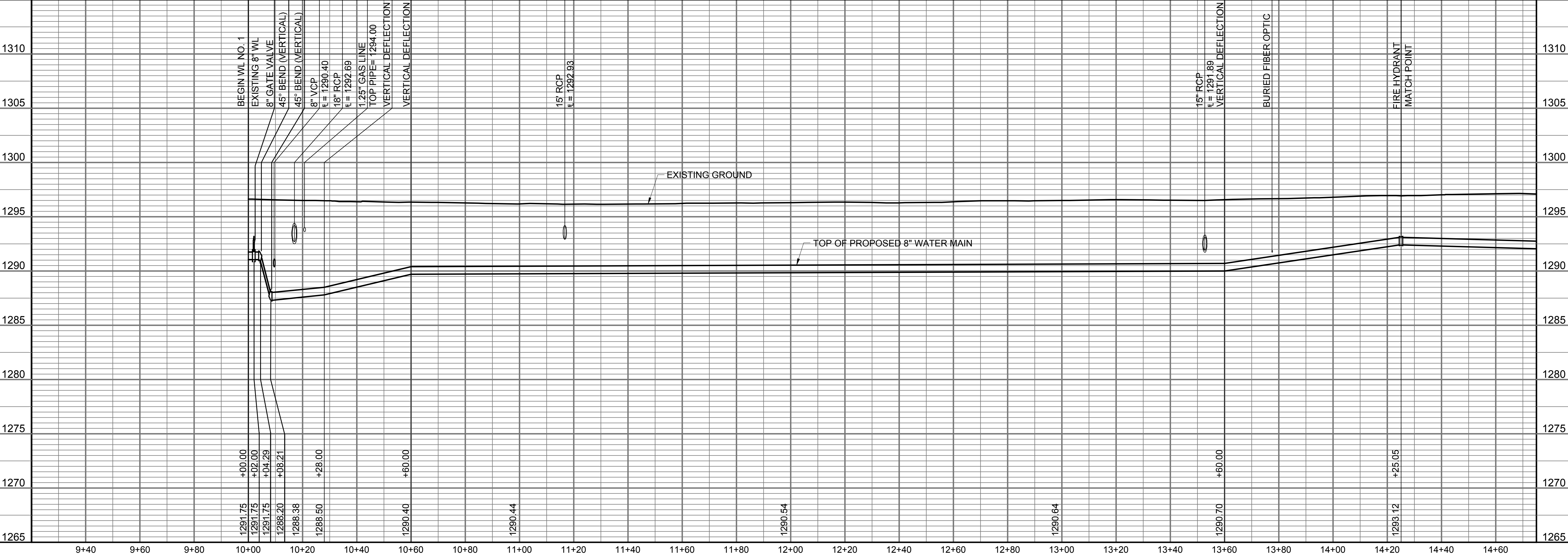
- X = DENOTES WATERLINE TO BE ABANDONED IN PLACE.
- ⌊ = DENOTES CAPI/PLUG BY THE CONTRACTOR.  
(INCLUDES REMOVAL AND REPLACEMENT OF PAVEMENT)
- ⊗ = CLOSE VALVE, REMOVE VALVE BOX (SALVAGE TO CITY)  
(INCLUDES REMOVAL AND REPLACEMENT OF PAVEMENT)
- ⊙ = SEE SHEET NO. C003 FOR  
WATERLINE COORDINATES (TYP.)
- = PROPOSED INLET PROTECTION



1.50 L.F. 8" DI RJ PIPE  
 1.52 L.F. 8" DI RJ PIPE  
 3.50 L.F. 8" DI RJ PIPE  
 32.00 L.F. 8" RJ PIPE  
 BY DIRECTIONAL DRILL  
 299.94 L.F. 8" RJ PIPE  
 BY DIRECTIONAL DRILL  
 64.68 L.F. 8" PIPE  
 BY DIRECTIONAL DRILL

UNLESS NOTED OTHERWISE,  
 ELEVATIONS SHOWN ARE TOP OF PIPE

WATERLINE NO. 1



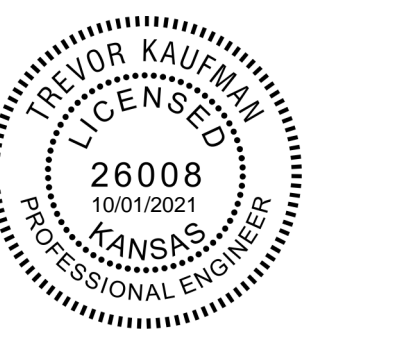
WATERLINE IMPROVEMENTS  
 TO SERVE

TOPEKA STREET  
 FROM LEWIS TO ENGLISH

GARY JANZEN, P.E. - CITY ENGINEER  
 CITY OF WICHITA PROJECT NO. 448-2020-

Issue:	
JOB NO.	35-207042-002-0042
DATE	SEPTEMBER 2021
PM	RWG
DESIGNED BY	TBK
DRAWN BY	KTD
CHECKED BY	RWG

WATERLINE NO. 1  
**C101**



SAVED 10/12/2021 10:48:17 AM BY KURTIS DEKAT  
 PLOTTED 10/12/2021 10:53:44 AM BY KURTIS DEKAT  
 U:\WICHITA-CIVIL\2020\207042\002\MONDRAWINGS\207042-002-C101-WATERLINE NO. 1.DWG