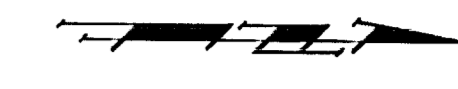
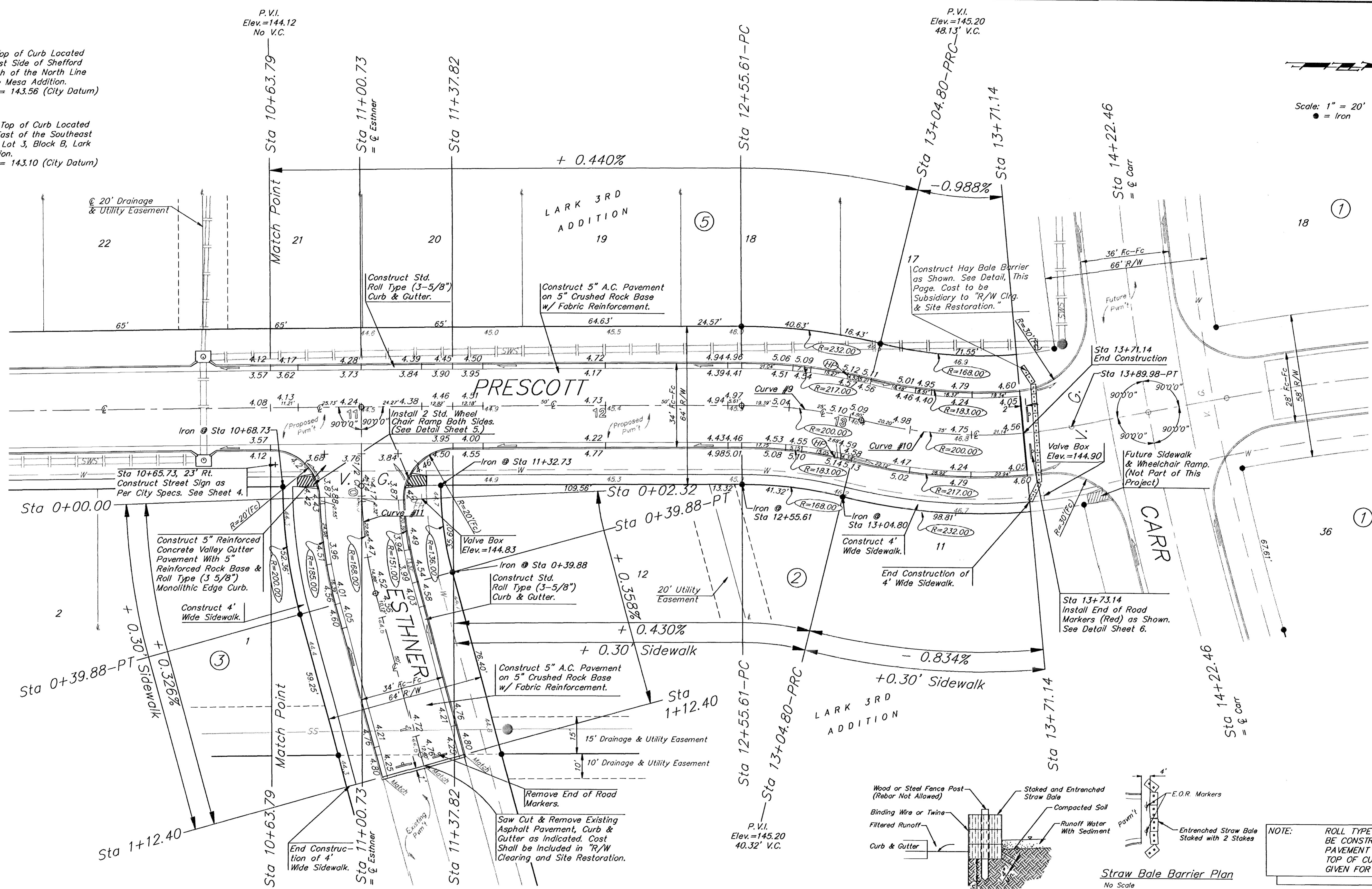


BM #1 "□" on Top of Curb Located at the East Side of Shefford 12.5' South of the North Line of Pawnee Mesa Addition. Elevation = 143.56 (City Datum)

BM #2 "□" on Top of Curb Located at 14.5' East of the Southeast Corner of Lot 3, Block B, Lark 2nd Addition. Elevation = 143.10 (City Datum)



Scale: 1" = 20'
● = Iron



CURVE #9
Curve Data Based on Centerline
Rad. = 200', Delta = 14°05'36", Tangent = 24.72'
Arc = 49.19', L.C. = 49.07', Def/ft. = 8.59524 Min.

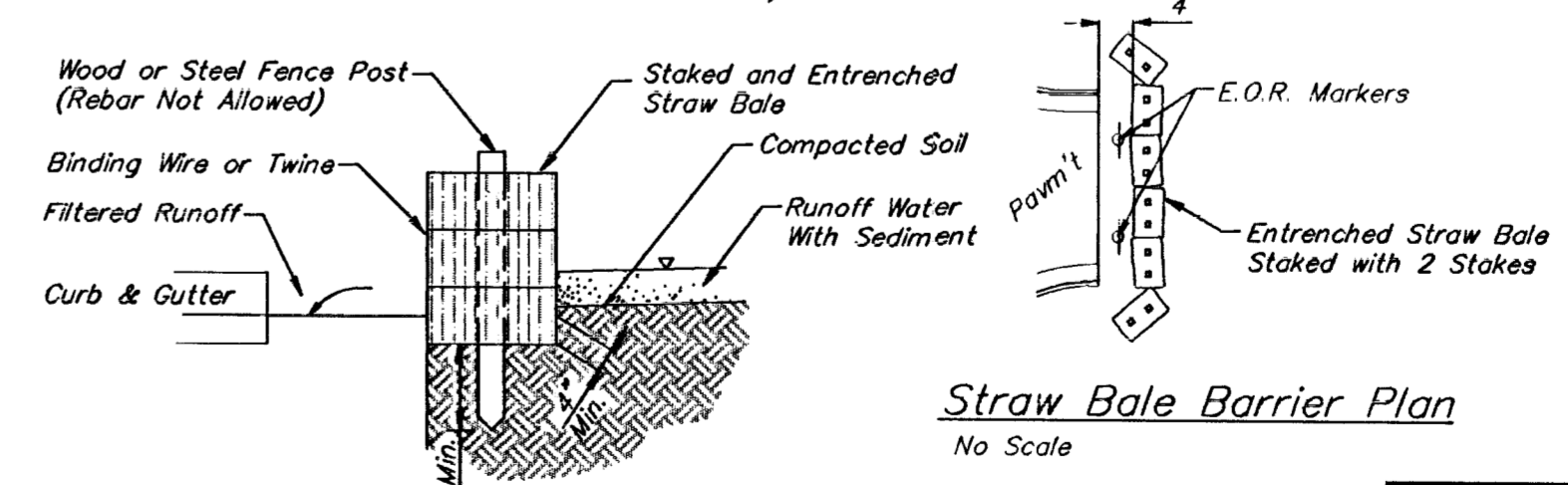
Station	Arc	FACE CHORD LENGTHS		Defl.	T. Defl.
		8 Lt.	8 Rt.		
12+55.61	-	-	-	0°00'00"	0°00'00"
12+75.00	19.39'	21.80'	16.96'	2°46'40"	2°46'40"
13+00.00	25.00'	28.10'	21.86'	3°34'53"	6°21'33"
13+04.80	4.80'	5.40'	4.20'	0°41'15"	7°02'48"

CURVE #10
Curve Data Based on Centerline
Rad. = 200', Delta = 24°24'08", Tangent = 43.25'
Arc = 85.18', L.C. = 84.54', Def/ft. = 8.59437 Min.

Station	Arc	FACE CHORD LENGTHS		Defl.	T. Defl.
		8 Lt.	8 Rt.		
13+04.80	-	-	-	0°00'00"	0°00'00"
13+25.00	20.20'	17.67'	22.71'	2°53'36"	2°53'36"
13+50.00	25.00'	21.86'	28.11'	3°34'52"	6°28'28"
13+71.14	21.14'	18.49'	23.77'	3°01'41"	9°30'09"
13+89.98-PT	18.84'	-	-	2°41'55"	12°12'04"

CURVE #11
Curve Data Based on Centerline
Rad. = 168', Delta = 13°36'09", Tangent = 20.04'
Arc = 39.88', L.C. = 39.79', Def/ft. = 10.23257 Min.

Station	Arc	FACE CHORD LENGTHS		Defl.	T. Defl.
		8 Lt.	8 Rt.		
0+00.00	-	-	-	0°00'00"	0°00'00"
0+25.00	25.00'	21.26'	28.70'	0°15'49"	4°15'49"
0+39.88	14.88'	12.66'	17.09'	2°32'16"	6°48'04"



Straw Bale Barrier Detail
No Scale
Note: Straw Bale Barriers to be Paid per Each as Inlet Sediment Barriers.

NOTE: ROLL TYPE CURB & GUTTER TO BE CONSTRUCTED ON THE PAVEMENT SHOWN ON THIS SHEET. TOP OF CURB ELEVATIONS ARE GIVEN FOR FULL HEIGHT CURB.

LARK 3RD ADDITION
PRESCOTT & ESTHNER

BAUGHMAN COMPANY P.A.
ENGINEERING, SURVEYING, & PLANNING

316-262-7271 • 315 ELLIS • WICHITA, KANSAS 67211

PROJECT NUMBER
472-78-245-82728-000-000-001

DESIGN BP	DRAWN TMG	APPROVED	DATE 7-96	SCALE 1" = 20'	SHEET 9 OF 21
--------------	--------------	----------	--------------	-------------------	--------------------------------------

LARK-04-E375