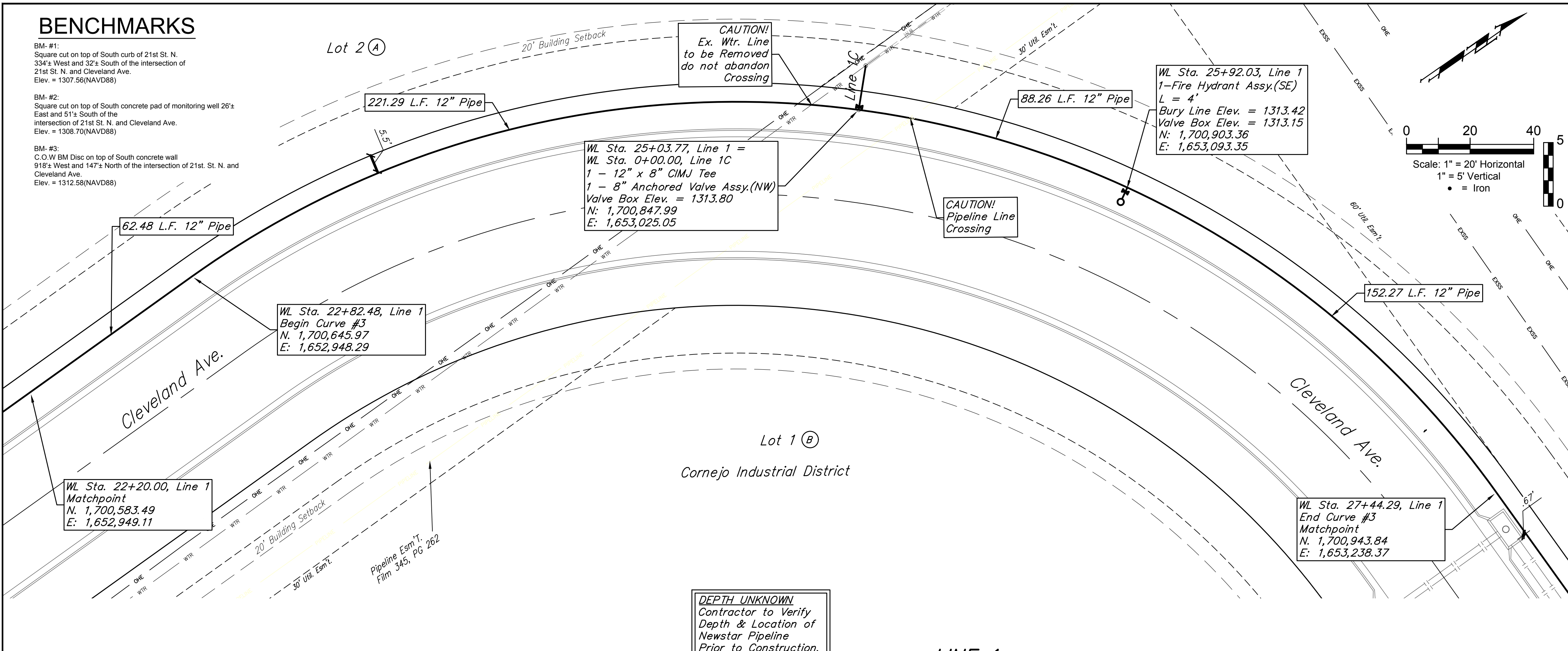


# BENCHMARKS

BM- #1:  
Square cut on top of South curb of 21st St. N.  
334'± West and 32'± South of the intersection of  
21st St. N. and Cleveland Ave.  
Elev. = 1307.56(NAVD88)

BM- #2:  
Square cut on top of South concrete pad of monitoring well 26'±  
East and 51'± South of the  
intersection of 21st St. N. and Cleveland Ave.  
Elev. = 1308.70(NAVD88)

BM- #3:  
C.O.W. BM Disc on top of South concrete wall  
918'± West and 147'± North of the intersection of 21st. St. N. and  
Cleveland Ave.  
Elev. = 1312.58(NAVD88)

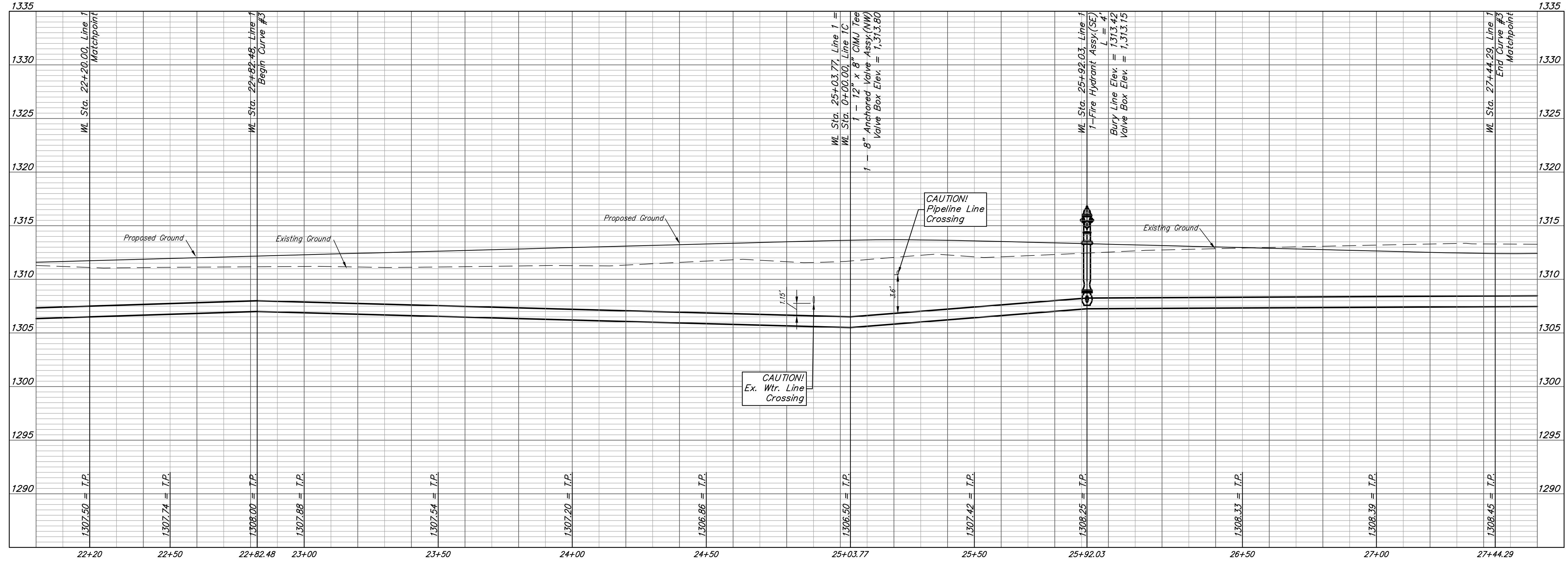


| FIRE HYDRANTS REQUIRED |                     |                       |                             |                                |
|------------------------|---------------------|-----------------------|-----------------------------|--------------------------------|
| STATION                | BURY LINE ELEVATION | TOP OF PIPE ELEVATION | FIRE HYDRANT BURY REQUIRED* | VALVE STEM EXT. REQUIRED (ft)* |
| 25+92.03               | 1313.42             | 1308.25               | 6.0'                        | 3'                             |

| Curve #3   |        |                       |                        |          |             |
|--|--------|-----------------------|------------------------|----------|-------------|
| Curve Data Based on Centerline of Pipe               |        |                       |                        |          |             |
| Rad. = 294' Delta = 90°00'00" Tangent = 294.00'      |        |                       |                        |          |             |
| Arc = 461.81' L.C. = 415.78' Def./Ft. = 5.84656 Min. |        |                       |                        |          |             |
| Station  | Arc    | Chord Lengths 8' Left | Chord Lengths 8' Right | Defl.    | Total Defl. |
| 22+82.48   | -      | -                     | -                      | 0°00'00" | 0°00'00"    |
| 23+00.00   | 17.52' | 17.99'                | 17.04'                 | 1°42'26" | 1°42'26"    |
| 23+25.00   | 25.00' | 25.67'                | 24.31'                 | 2°26'10" | 4°08'36"    |
| 23+50.00   | 25.00' | 25.67'                | 24.31'                 | 2°26'10" | 6°34'46"    |
| 23+75.00   | 25.00' | 25.67'                | 24.31'                 | 2°26'09" | 9°00'55"    |
| 24+00.00   | 25.00' | 25.67'                | 24.31'                 | 2°26'10" | 11°27'05"   |
| 24+25.00   | 25.00' | 25.67'                | 24.31'                 | 2°26'10" | 13°53'15"   |
| 24+50.00   | 25.00' | 25.67'                | 24.31'                 | 2°26'10" | 16°19'25"   |
| 24+75.00   | 25.00' | 25.67'                | 24.31'                 | 2°26'10" | 18°45'35"   |
| 25+00.00   | 25.00' | 25.67'                | 24.31'                 | 2°26'10" | 21°11'45"   |
| 25+25.00   | 25.00' | 25.67'                | 24.31'                 | 2°26'09" | 23°37'54"   |
| 25+50.00   | 25.00' | 25.67'                | 24.31'                 | 2°26'10" | 26°04'04"   |
| 25+75.00   | 25.00' | 25.67'                | 24.31'                 | 2°26'10" | 28°30'14"   |
| 26+00.00   | 25.00' | 25.67'                | 24.31'                 | 2°26'10" | 30°56'24"   |
| 26+25.00   | 25.00' | 25.67'                | 24.31'                 | 2°26'10" | 33°22'34"   |
| 26+50.00   | 25.00' | 25.67'                | 24.31'                 | 2°26'10" | 35°48'44"   |
| 26+75.00   | 25.00' | 25.67'                | 24.31'                 | 2°26'10" | 38°14'54"   |
| 27+00.00   | 25.00' | 25.67'                | 24.31'                 | 2°26'09" | 40°41'03"   |
| 27+25.00   | 25.00' | 25.67'                | 24.31'                 | 2°26'10" | 43°07'13"   |
| 27+44.29   | 19.29' | 19.81'                | 18.76'                 | 1°52'47" | 45°00'00"   |

**DEPTH UNKNOWN**  
Contractor to Verify  
Depth & Location of  
Newstar Pipeline  
Prior to Construction.

## LINE 1



**BAUGHMAN COMPANY**

315 Ellis St.  
Wichita, KS 67211  
316-262-7271  
BaughmanCo.com

Cornejo Industrial District

**Water Line 1  
Sta. 22+20  
to  
Sta. 27+44**

Water Line Improvements

PROJECT NUMBER:  
448-2021-017262

DESIGN: PSB DRAWN: JA

DATE: Oct. 26, 2021

SHEET **6** OF **26**

File: E:\Projects\Cornejo Industrial District\_20-11-P603\Engineering\Phase 1 (only if Multiple Phases)\PPW\CID PPW Petition.dwg