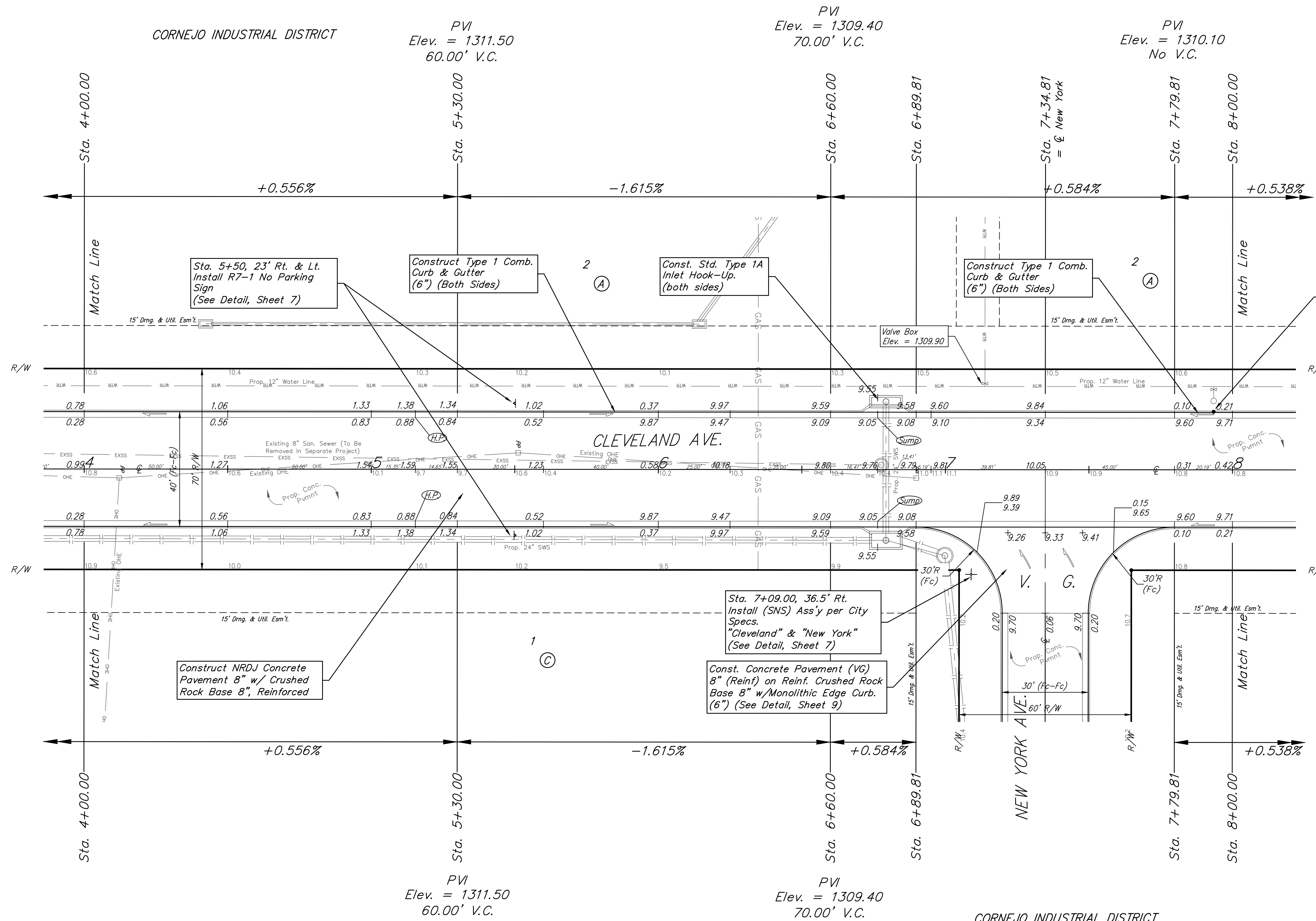
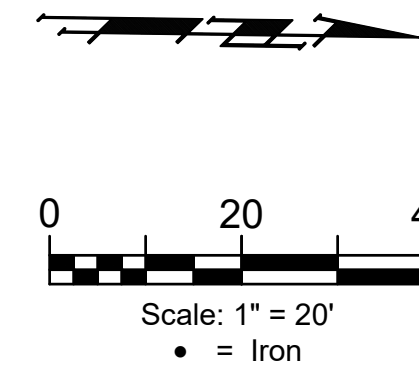


BENCHMARKS:
 Square Cut On Top of South Curb of 21st St. N.
 33'± West and 32'± South of the Intersection of 21st St. N. and Cleveland Ave.
 Elev. = 1307.56(NAVD88)

Square Cut On Top of South Concrete Pad of Monitoring Well 26'± East and 51'± South of The Intersection of 21st St. N. and Cleveland Ave.
 Elev. = 1308.70(NAVD88)



Sta. 5+50, 23' Rt. & Lt. Install R7-1 No Parking Sign (See Detail, Sheet 7)

Construct Type 1 Comb. Curb & Gutter (6") (Both Sides)

Const. Std. Type 1A Inlet Hook-Up (both sides)

Construct Type 1 Comb. Curb & Gutter (6") (Both Sides)

Sta. 7+93.46, 20.25' Lt. Install subdivision benchmark (Flat survey marker No. 8134-08 3" top diameter) in top of curb. Cost shall be incidental to L.F. curb & gutter.

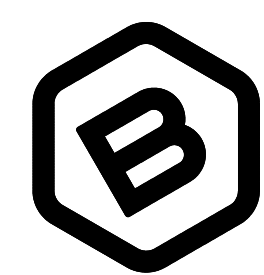
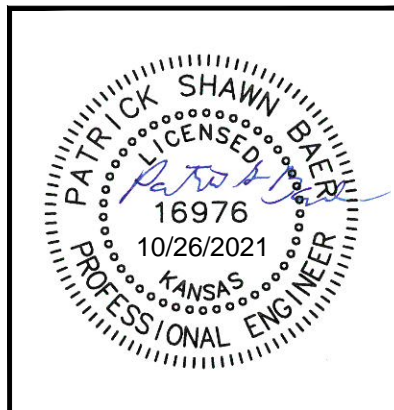
Construct NRDJ Concrete Pavement 8" w/ Crushed Rock Base 8", Reinforced

Sta. 7+09.00, 36.5' Rt. Install (SNS) Ass'y per City Specs. "Cleveland" & "New York" (See Detail, Sheet 7)

Const. Concrete Pavement (VG) 8" (Reinf) on Reinf. Crushed Rock Base 8" w/Monolithic Edge Curb. (6") (See Detail, Sheet 9)

The Contractor shall coordinate with local utility company on the removal of electric service lines, meters and poles located on site. Contractor shall ensure that all services are located and accounted for before disconnections begin to ensure that adjacent businesses are not affected.

Type 1 curb & gutter to be constructed on the pavement on this sheet. Top of curb elevation are given for Type 1 curb.



BAUGHMAN COMPANY
 315 Ellis St.
 Wichita, KS 67211
 316-262-7271
 BaughmanCo.com

CORNEJO INDUSTRIAL DISTRICT

CLEVELAND

Sta. 4+00.00 to 8+00.00
 Street Paving Improvements

PROJECT NUMBER:
 472-2021-085726

DESIGN: PSB DRAWN: HJW

DATE: Oct. 26, 2021

SHEET 11 OF 62

File: E:\Projects\Cornejo Industrial District_20-11-P603\Engineering\Phase 1 (only if Multiple Phases)\STR Plans\STR.dwg