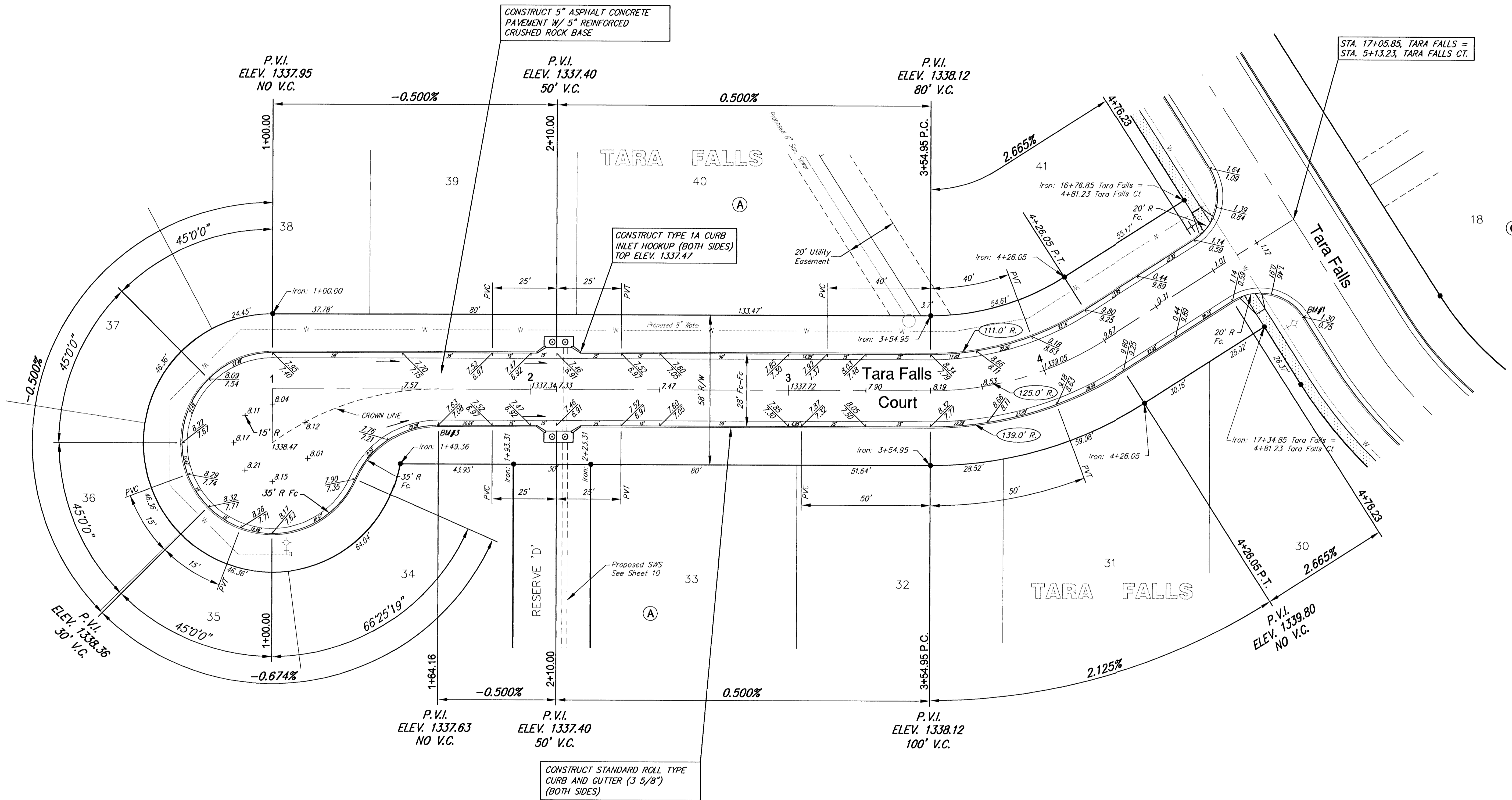


Subdivision Bench Marks

No.	Street and Station	From CL	Description	Elevation
1	Tara Falls, Sta. 17+40	17.50' Rt	N. End of N.E. Corner at Tara Falls & Tara Falls Ct (1802-1842) In Front of Fire Hydrant	
3	Tara Falls Court, Sta. 1+64	14.50' Rt	N. End of East Cul-de-sac Return, 350'± S. of Int. of Tara Falls and Tara Falls Court (1802-1842)	



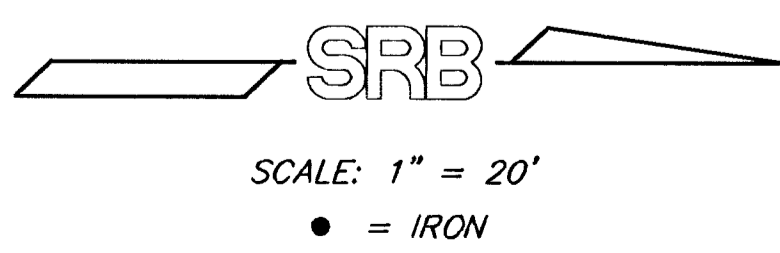
CONSTRUCT 5" ASPHALT CONCRETE PAVEMENT W/ 5" REINFORCED CRUSHED ROCK BASE

CONSTRUCT TYPE 1A CURB INLET HOOKUP (BOTH SIDES) TOP ELEV. 1337.47

CONSTRUCT STANDARD ROLL TYPE CURB AND GUTTER (3 5/8") (BOTH SIDES)

STA. 17+05.85, TARA FALLS = STA. 5+13.23, TARA FALLS CT.

NOTE: ROLL TYPE CURB AND GUTTER TO BE CONSTRUCTED ALONG PAVEMENT DEPICTED ON THIS SHEET



Tara Falls Court Curve #1  
Curve Data Based on Centerline  
Rad. = 125' Delta = 32° 35' 27" Tangent = 36.54'  
Arc = 71.1' L.C. = 70.15' Def/ft. = 13.75141 Min.

Station	FACE CHORD LENGTHS		Def.	T. Def.
	8 Lt.	8 Rt.		
3+54.95	-	-	0'00"00"	0'00"00"
3+75.00	20.05'	16.50'	23.55"	4'35"43"
4+00.00	25.00'	20.57'	29.35"	5'43"42"
4+26.05	26.05'	21.43'	30.58"	5'58"13"

**TARA FALLS PHASE 2 PAVING  
TARA FALLS COURT  
WICHITA, SEDGWICK COUNTY, KANSAS**

**SRB** 924 NORTH MAIN WICHITA, KANSAS 67203 www.srb1.com 316-264-8008 FAX 264-4621 E-mail: srb@srb1.com

**SAVOY, RUGGLES & BOHM, P.A.  
ENGINEERING & SURVEYING**

PROJECT NUMBER  
472-83374

DESIGN KWL	DRAWN KWL	UTILITY	REVIEW	DATE June 6, 2001	REVISED
---------------	--------------	---------	--------	----------------------	---------

PROJECT NUMBER: 472-83374

SHEET 7 OF 27