

PAVING FOR 45TH ST. SOUTH AND INCIDENTAL SWS IMPROVEMENTS

to serve

**45th St. S., from the west line of Lulu Ave.,
east to the west line of Hydraulic**

CITY OF WICHITA, KANSAS

James L. Armor, P.E. Acting City Engineer

Project Number

472-83909

O.C.A. Number

765893

GENERAL NOTES:

1. Contractor will be required to provide notice to utility companies a minimum of twenty-four (24) hours prior to any excavation, as follows:

Kansas One-Call 687-2470

The Contractor must notify the following in case of an emergency:

Cox Communications 262-4270
 Kansas Gas Service 1-888-482-4950
 Westar Energy 383-8650
 Aquila Energy 1-800-303-0357
 Southwestern Bell 268-2245
 City of Wichita Water Dept. 268-4563
 City of Wichita Sewer Maint. 268-4024
 City of Wichita Storm Sewer Maint. 268-4090
 City of Wichita Traffic Maint. 268-4034
 Conoco Pipeline Co. 1-800-231-2351
 Williams Pipeline Co. 529-8500
 Phillips Pipeline Co. 1-800-766-8230

2. Utility service lines, poles, valve boxes, meters, and etcetera are to be adjusted as necessary by others prior to construction unless the plans specifically call for their adjustment by the Contractor or unless the plans specifically identify a utility to be adjusted by its owner during construction. Existing utilities and their location, as shown on the plans, represent the best information obtainable for design. The contractor will be required to work around existing utilities within the right-of-way which do not conflict with proposed construction.

3. Trees and shrubs in public right-of-way which are in direct conflict with proposed new construction shall be removed by the Contractor with the Engineer's approval. Trees and shrubs which are not in direct conflict with proposed new construction shall be saved and protected from damage.

4. All areas disturbed by construction shall be seeded per specifications on the "Erosion Control Plan". Contractor shall prepare ground and plant per City specifications.

5. Rubble from the removal of miscellaneous structures and excess excavation which is to be wasted shall be disposed of on sites to be provided by the Contractor. These sites shall be approved by the Engineer as to suitability, appearance and site location. Locations that, in the opinion of the Engineer, will leave an unsightly appearance will not be approved. All disposal sites must be approved by the Kansas Department of Health and Environment. Material either stockpiles or disposed of in a flood plain would a Kansas State Board of Agriculture permit. Any material dumped in waters of the United States or wetlands is subject to U.S. Corps of Engineers permitting regulations. Any material buried or stockpiled beyond approved construction limits would require additional archaeological investigations unless buried in a previously approved borrow location.

6. The Contractor shall be responsible for preserving property irons. The Contractor will be required to re-establish any property irons which are damaged or destroyed by his construction operations. Such irons shall be re-established by a licensed land surveyor in accordance with state law.

7. A saw cut of at least one-half the depth of existing surface courses of one-fourth the depth of the existing total pavement thickness shall be provided at locations where proposed construction abuts as existing surface course or pavement for which partial removal of that surface or pavement is required. Sawed joint to facilitate removal within three (3) feet of existing joints will not be permitted and for such instances the limits of removal shall extend to the existing joint. Such saw cuts will not be paid for directly and this cost shall be considered as subsidiary to the removal of the surface or pavement.

8. Place all excess excavation on Lots 10-19, Block B, Hidden Glen Addition (North side of project).

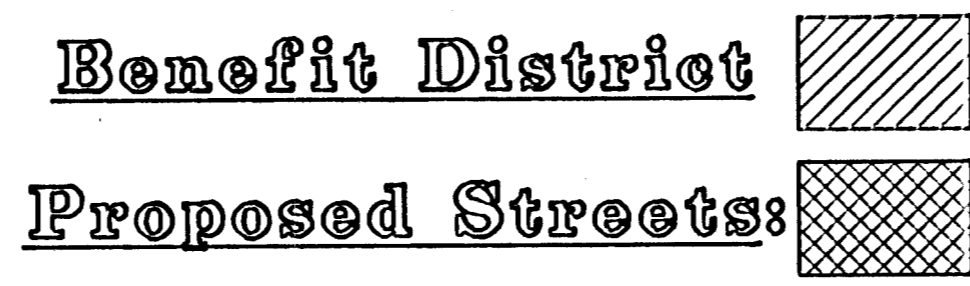
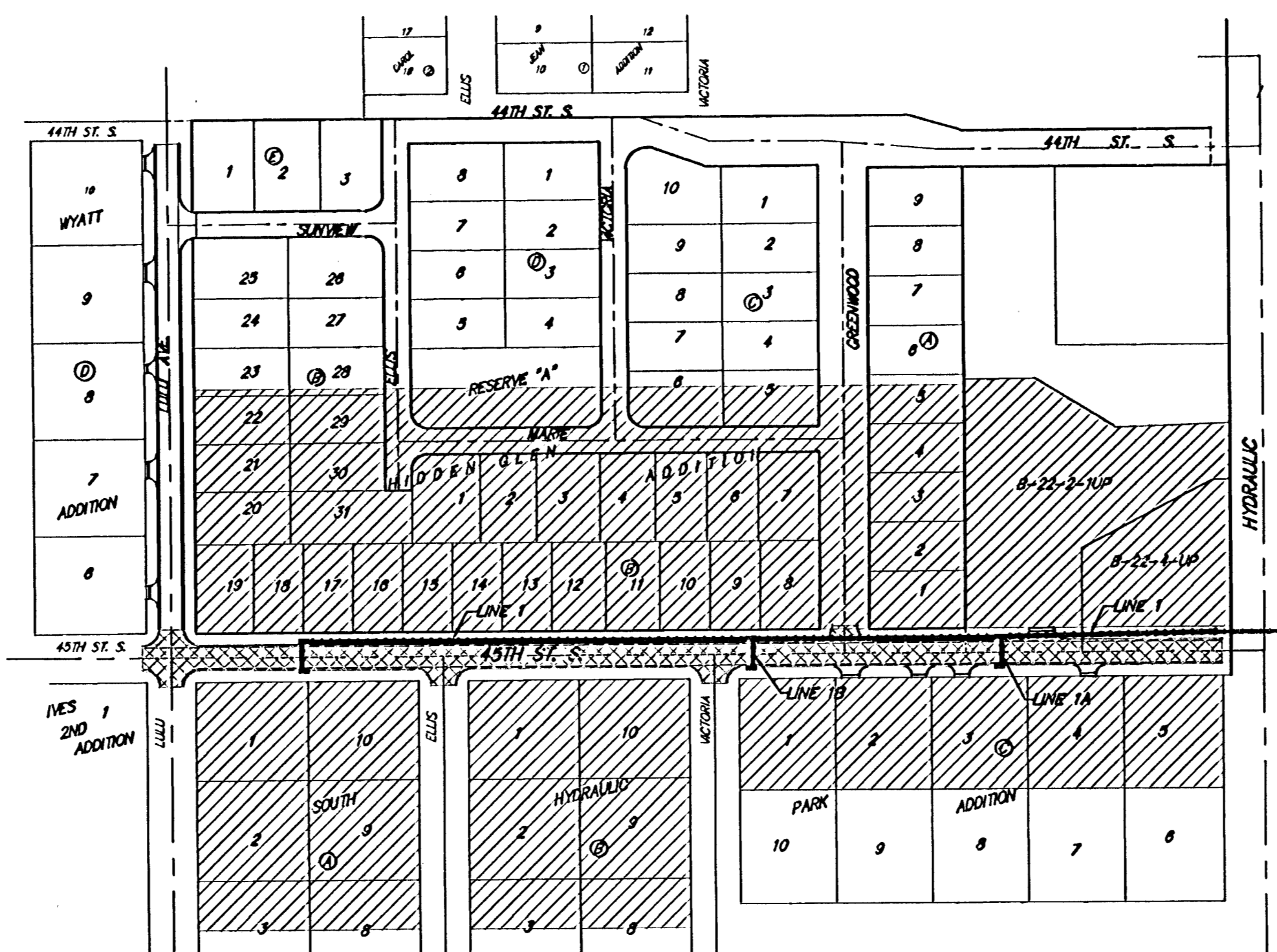
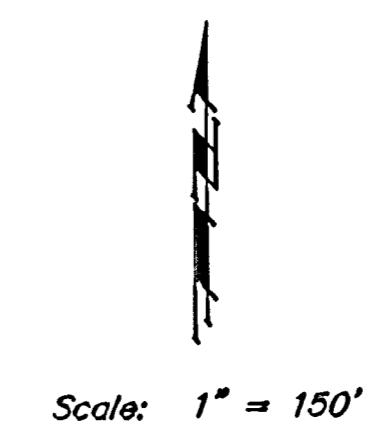
9. All existing and proposed erosion control measures including silt fencing, erosion control mat, straw bales, inlet barriers, and const. entrance shall be maintained throughout construction by the contractor and until project is accepted by the City of Wichita. The on-site engineer shall complete weekly reports on the status of erosion control measures. The contractor shall be required to comply with maintenance and/or replacement of erosion control measures as determined by the on-site engineer until project is accepted by City of Wichita. Maintenance and/or replacement of erosion control measures to be paid by L.S. bid item "Erosion Control BMP's."

Benchmarks

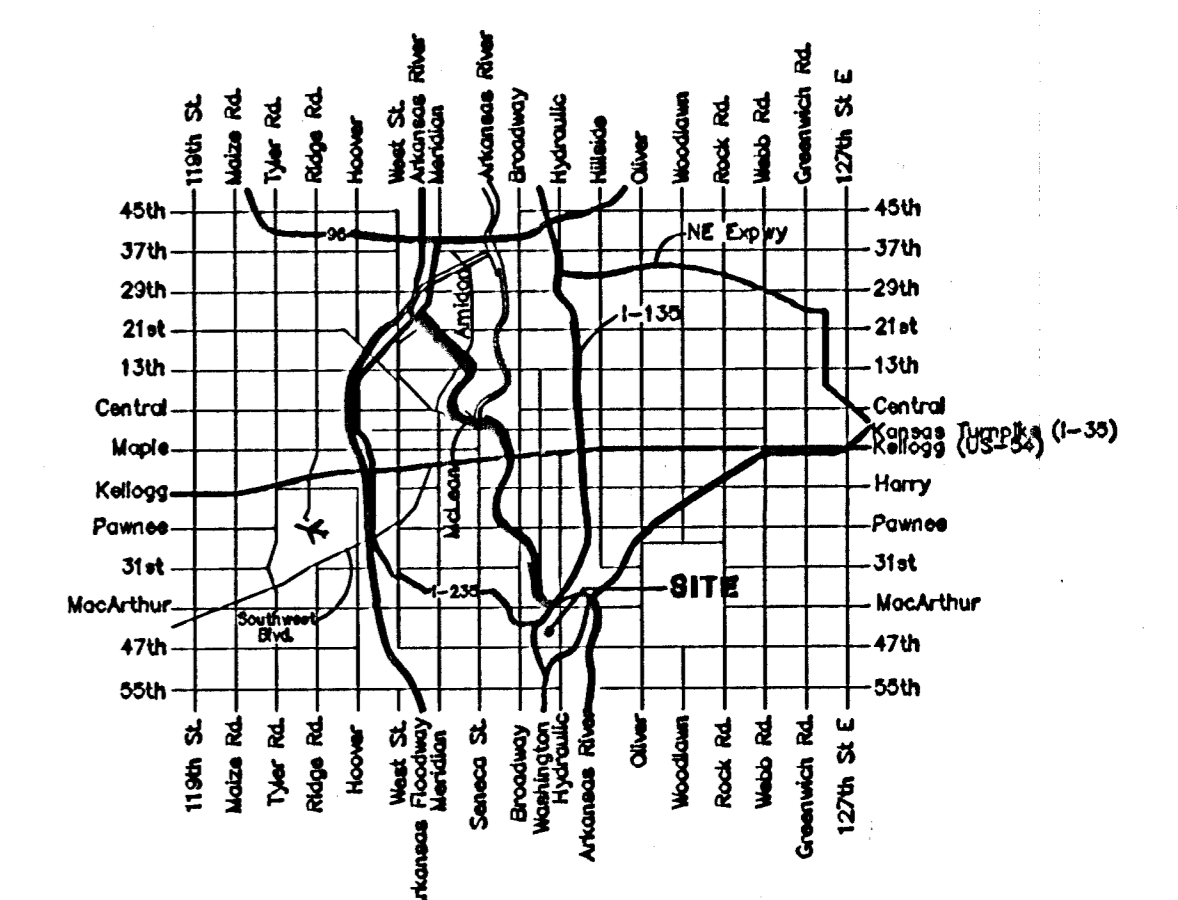
C.O.W. benchmark, SE corner of intersection of Hydraulic & 43rd St. S. 25.5' E and 35' S of centerline. Elev. = 84.99 City Datum

Sheet Index

Title Sheet	1
30' Pavement Detail	2
Sign Detail	3
Drive Detail	4
Miscellaneous Details	5
45th St. South	6-8
SWS Line 1	9-11
SWS Lines 1A & 1B	12
Std. Type 1A Double Inlet Detail	13
Std. Type 1 Double Inlet Detail	14
Special Shallow Manhole Detail	15
MH Ring & Cover Detail	16
Erosion Control Plan	17
Erosion Control BMP's	18-21
Street X-Sections	22-24
Copy of Plat	25



Project Earthwork Totals
 Excavation = 2735 C.Y.
 Loose Fill = 75 C.Y.
 Compacted Fill = 33 C.Y.
 Total Project Length
 1,303 L.F. = 0.25 Miles



Vicinity Map

