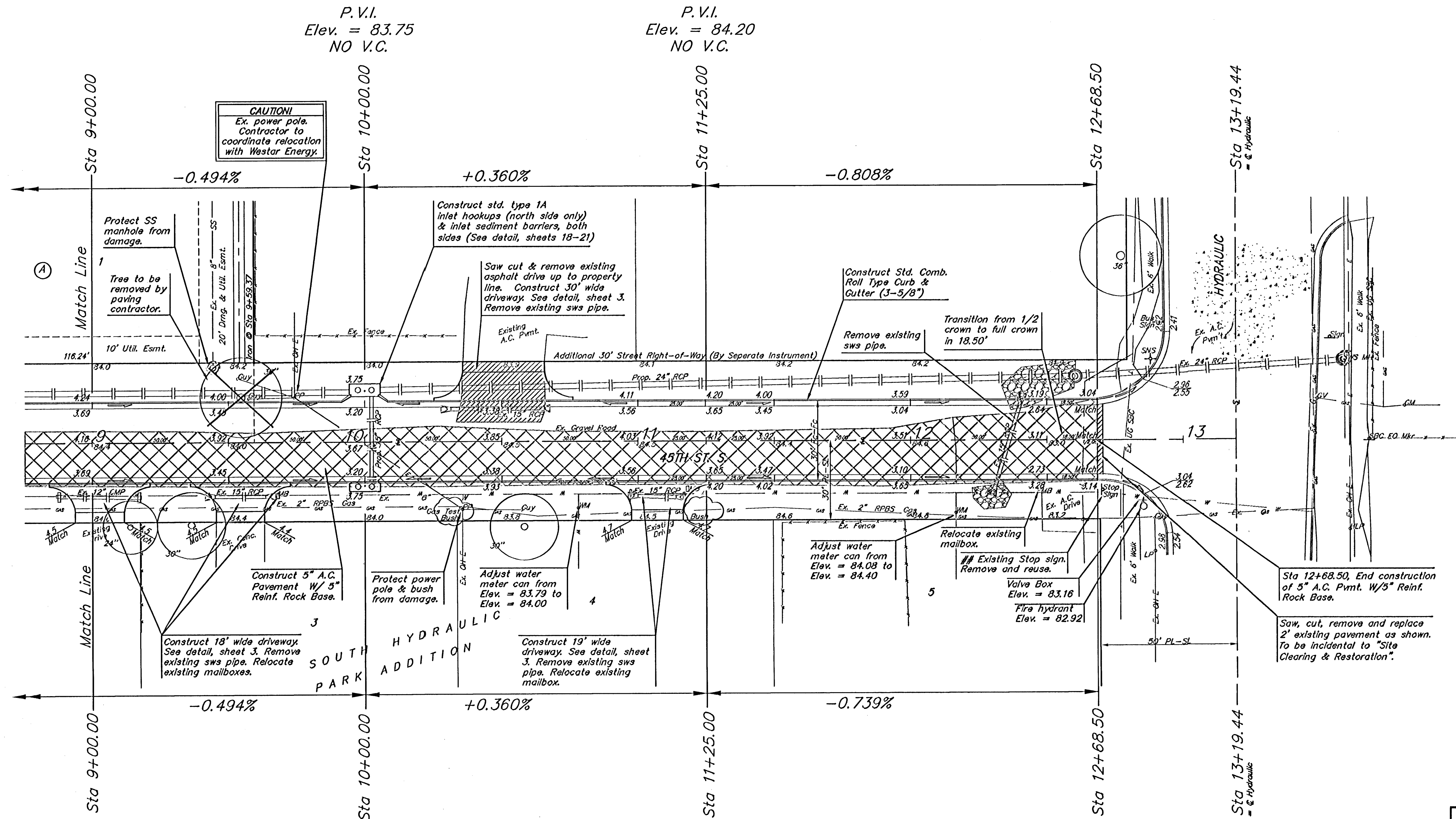


BENCHMARK:
 C.O.W. benchmark, SE
 corner of intersection of
 Hydraulic & 43rd St. S.
 23.5' E and 35' S of
 centerline.
 Elev. = 84.99 City Datum



Scale: 1" = 20'
 • = Iron



P. V. I.
 Elev. = 83.75
 NO V. C.

P. V. I.
 Elev. = 84.20
 NO V. C.

P. V. I.
 Elev. = 83.75
 NO V. C.

P. V. I.
 Elev. = 84.20
 NO V. C.

NOTE:
 Street sign removed & reset,
 mailboxes removed & reset,
 removal of landscape material,
 water meter can adjustments, etc.
 shall all be incidental to bid item
 "Site Clearing and Restoration".

NOTE:
 Paving Contractor to remove
 all existing landscape
 material from R/W and
 return to property owner.

Denotes Trees to be
 Removed by the Paving
 Contractor

NOTE:
 Paving Contractor to remove and
 reset existing Stop Sign.
 Contractor shall repair/replace any
 signs damaged during construction.

NOTE:
 ROLL TYPE CURB & GUTTER TO
 BE CONSTRUCTED ON THE
 PAVEMENT SHOWN ON THIS SHEET.
 TOP OF CURB ELEVATIONS ARE
 GIVEN FOR FULL HEIGHT CURB.

		45th Street South Sta. 9+00 to Sta. 13+19.44 STREET IMPROVEMENTS	
<small>Baughman Company, P.A. 315 Ellis St. Wichita, KS 67211 P 316-262-7711 F 316-262-0149 ENGINEERING SURVEYING PLANNING LANDSCAPE ARCHITECTURE</small>			
PROJECT NUMBER 472-83909	DESIGN MWS	DRAWN TMS	
REVISIONS	APPROVED DWS	DATE 03/05	
		SCALE Noted	
		SHEET	8 OF 25
HiddenGlen/45thStreet		04-09-E057	