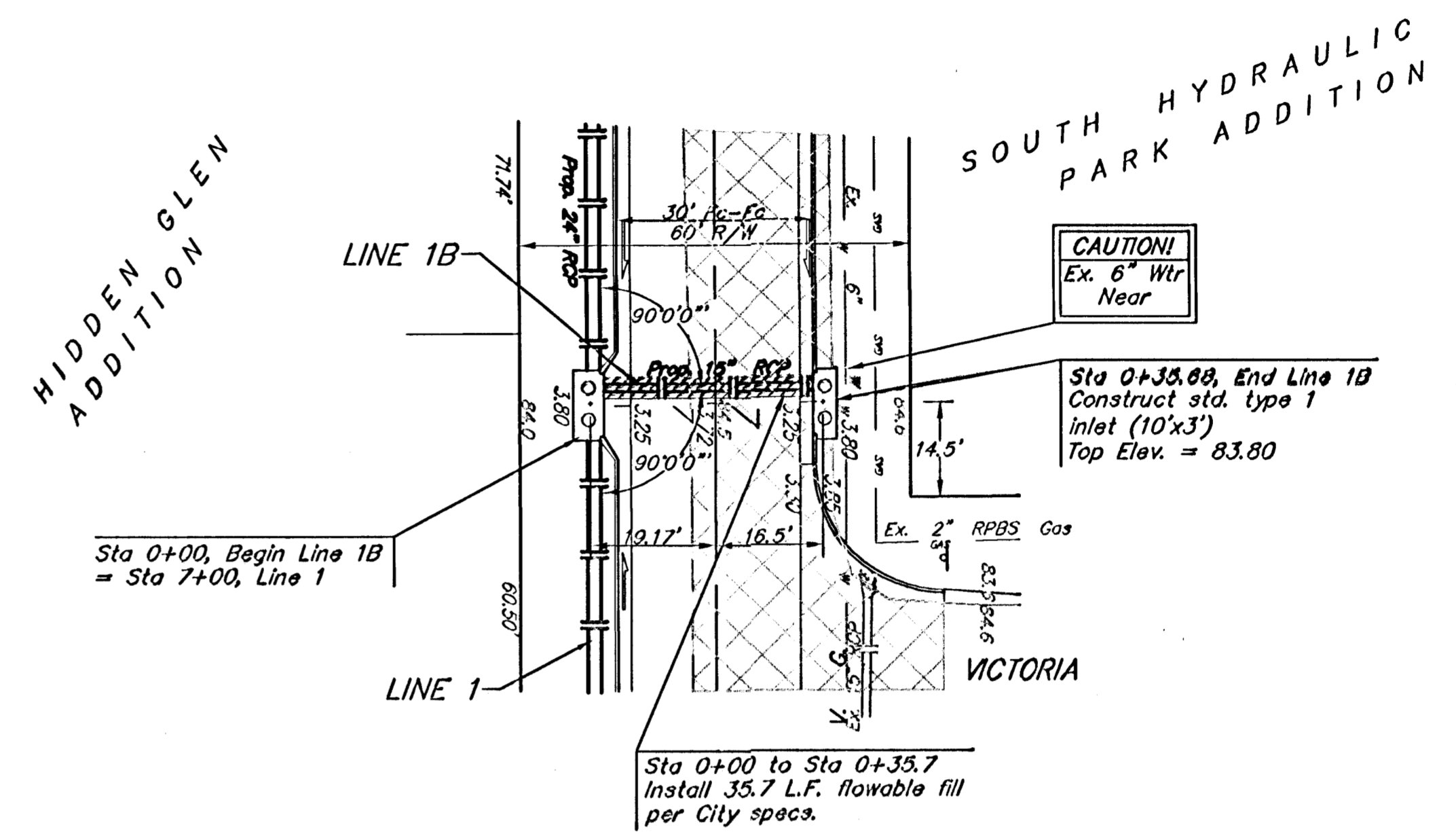
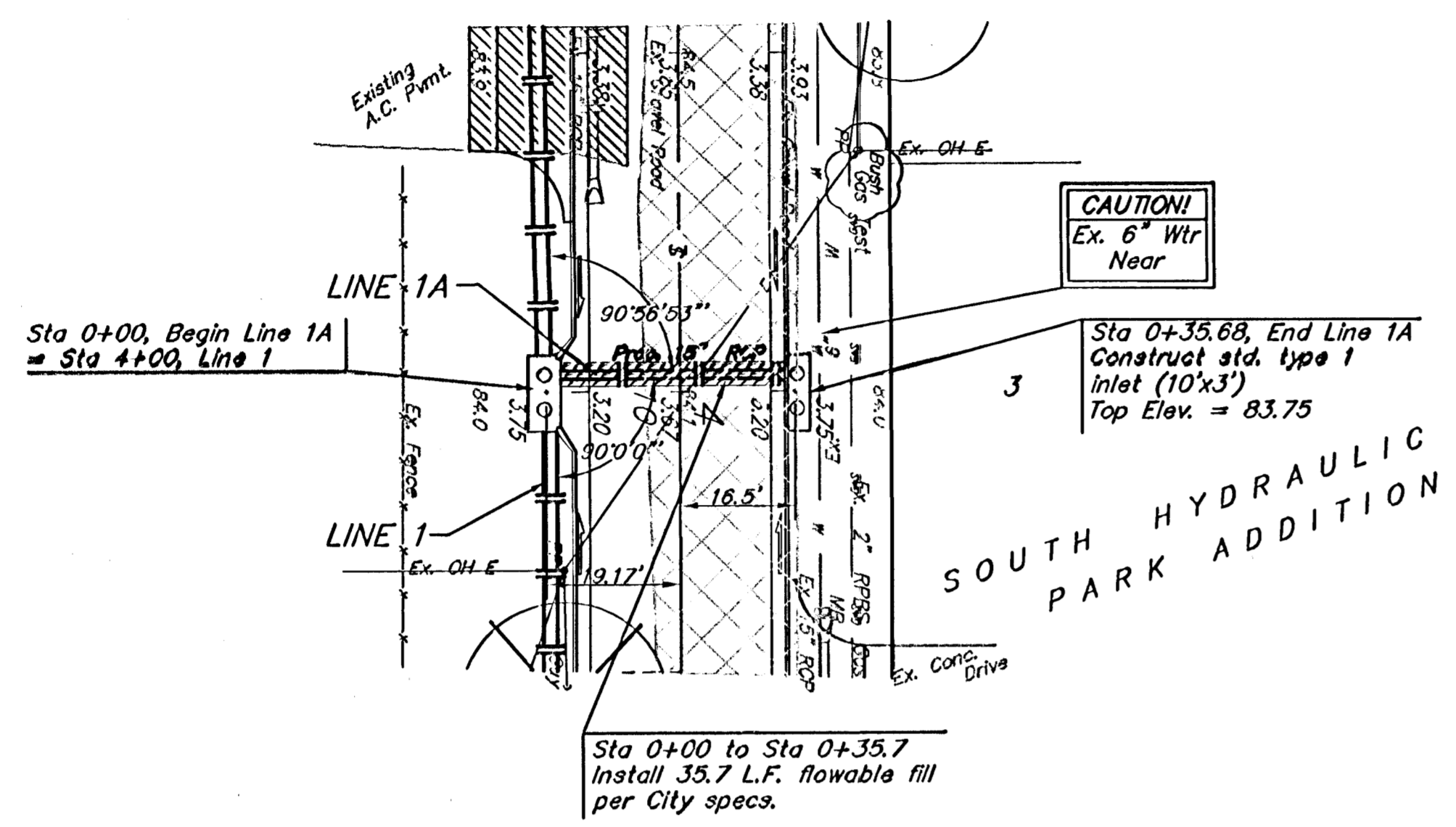


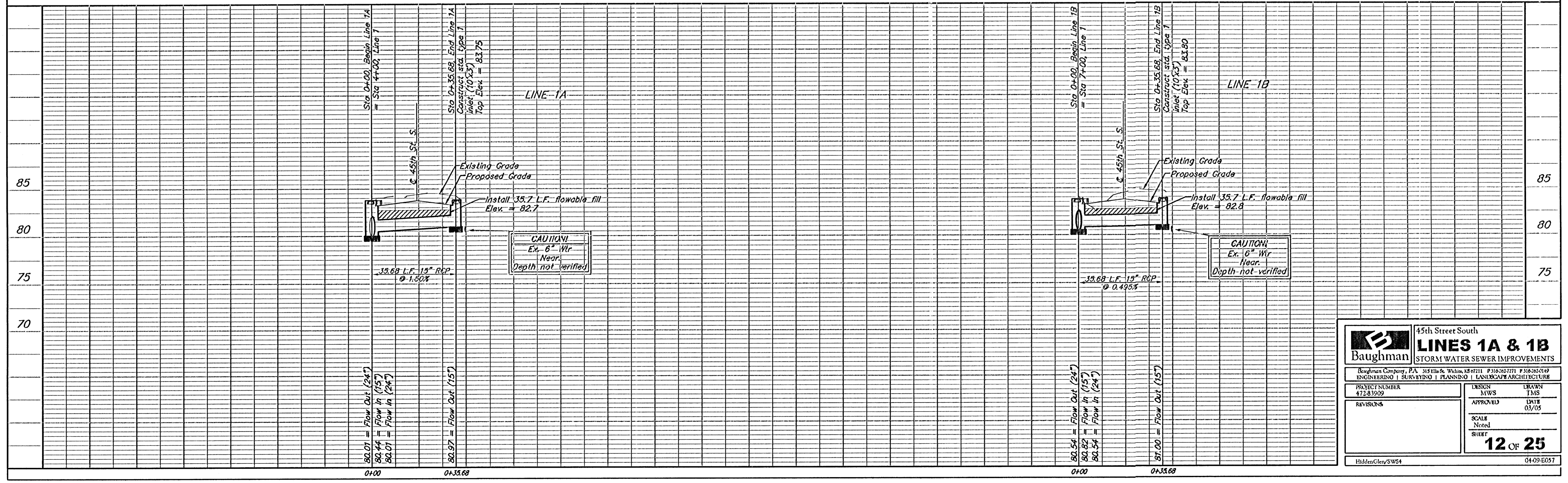
BENCHMARK:  
 C.O.W. benchmark, SE  
 corner of intersection of  
 Hydraulic & 43rd St. S.  
 25.5' E and 35' S of  
 centerline.  
 Elev. = 84.99 City Datum

Scale: 1" = 20'  
 • = Iron



2 = SWS Stationing  
 12 = Street Stationing

⊗ Denotes Trees to be  
 Removed by the Paving  
 Contractor



		45th Street South	
		<b>LINES 1A &amp; 1B</b>	
STORM WATER SEWER IMPROVEMENTS		<small>Baughman Company, P.A. 315 Ellis &amp; Whitson, MS #7111 P 316-262-7771 F 316-262-0149        ENGINEERING   SURVEYING   PLANNING   LANDSCAPE ARCHITECTURE</small>	
PROJECT NUMBER 472-83909	DESIGN MWS	DRAWN TMS	
REVISIONS	APPROVED	DATE 03/05	
	SCALE Noted	SHEET <b>12 OF 25</b>	
HiddenGlen/SWS4		04-09-E057	