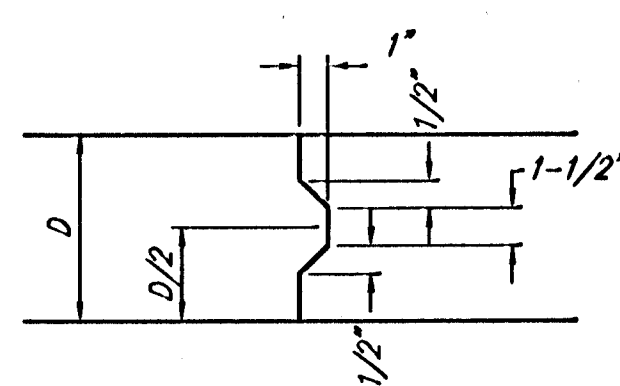
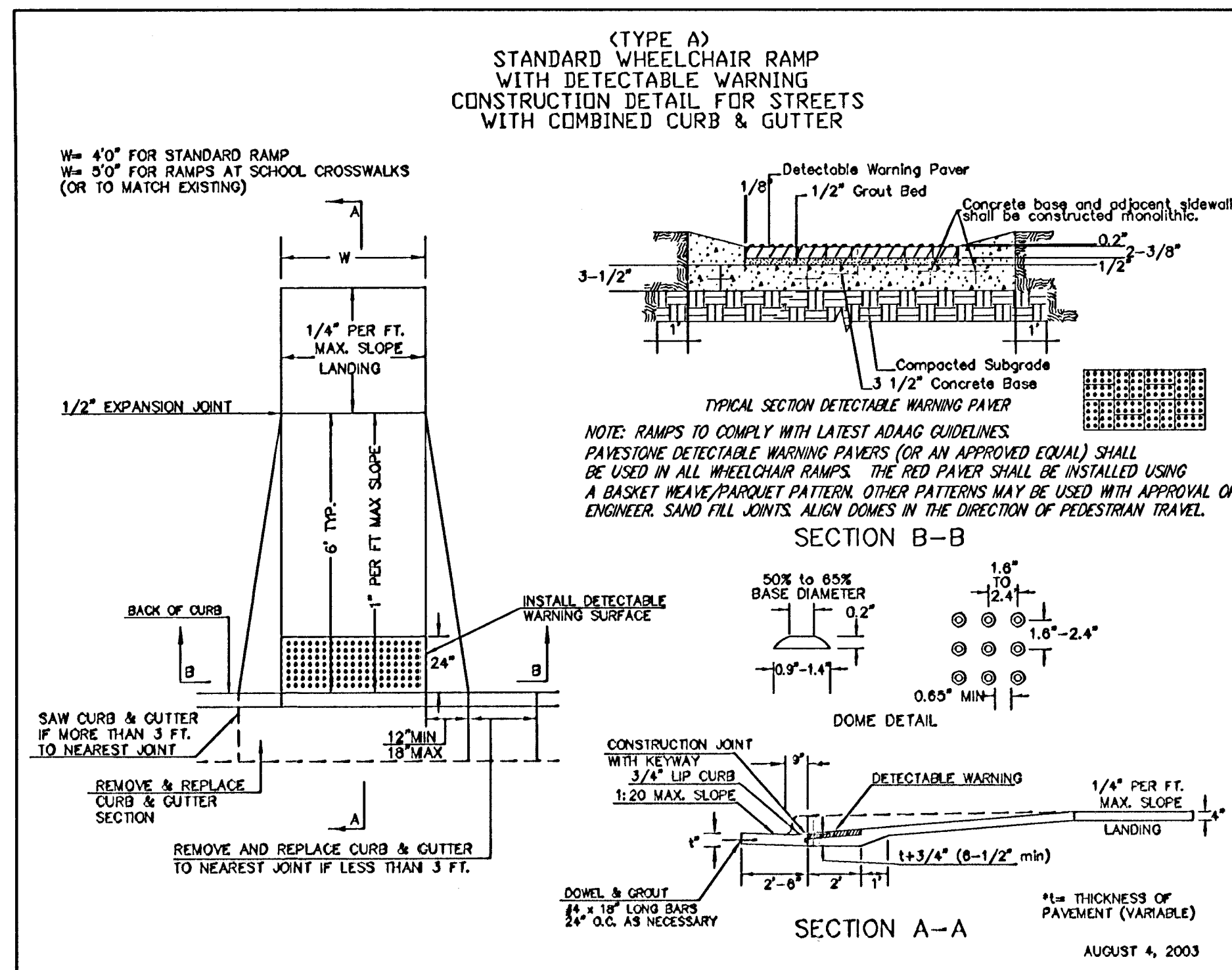


EXPANSION JOINT

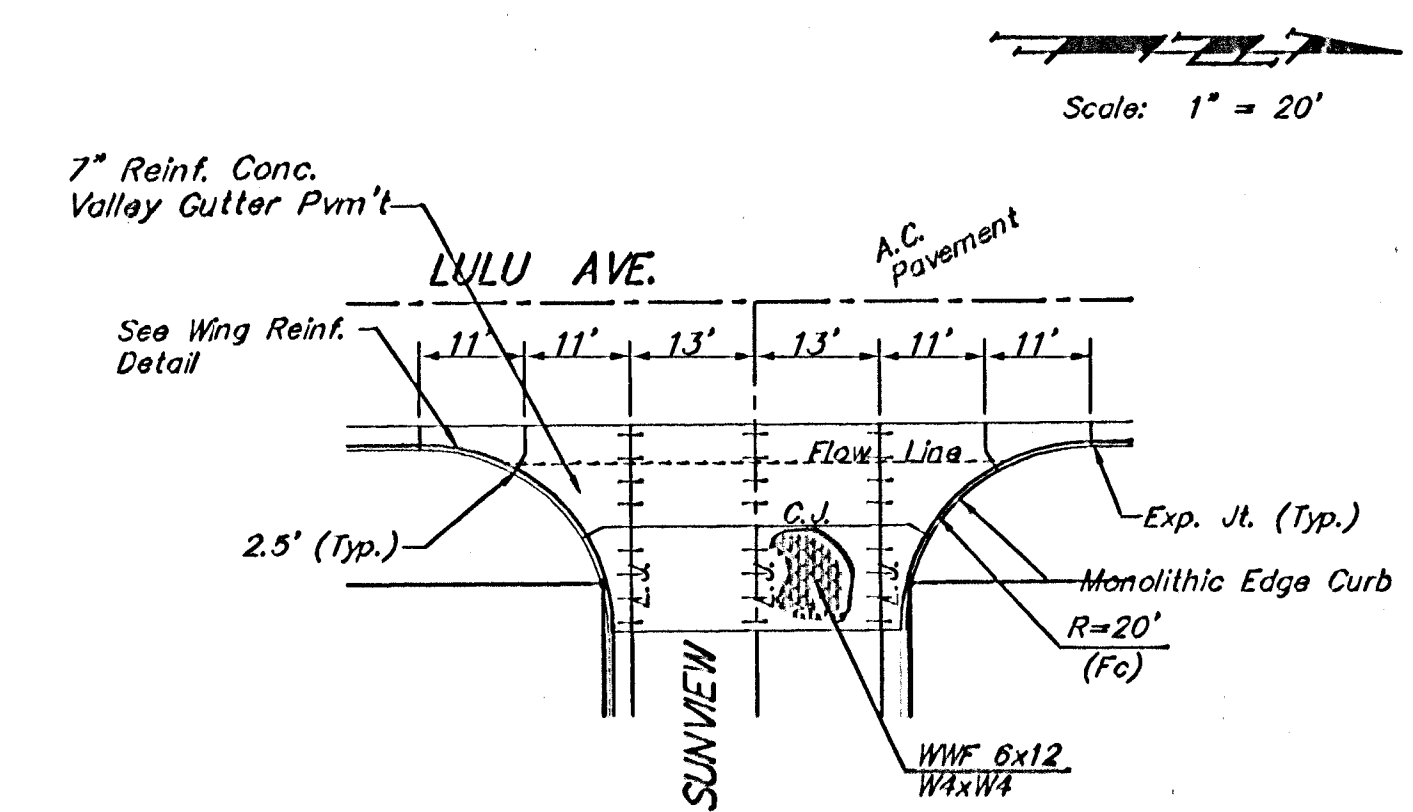
NOTE: Extra Thickness to be Subsidiary to Price of Square Yards Pavement



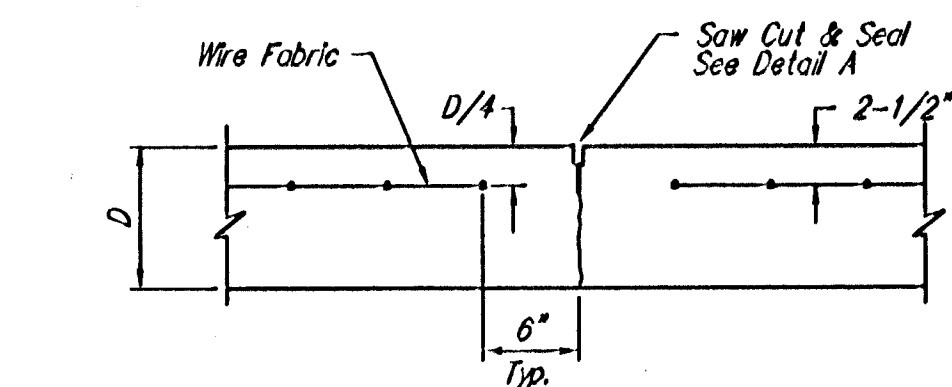
KEYWAY DETAIL



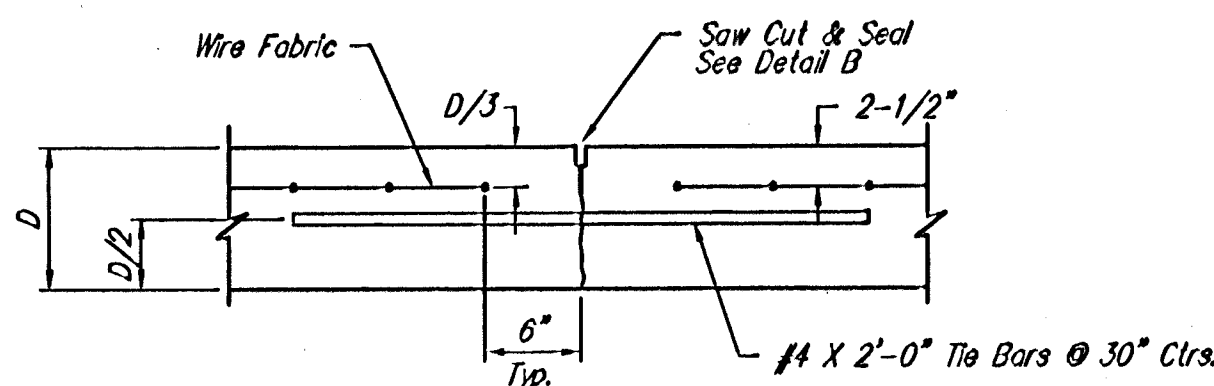
WHEELCHAIR RAMP DETAIL



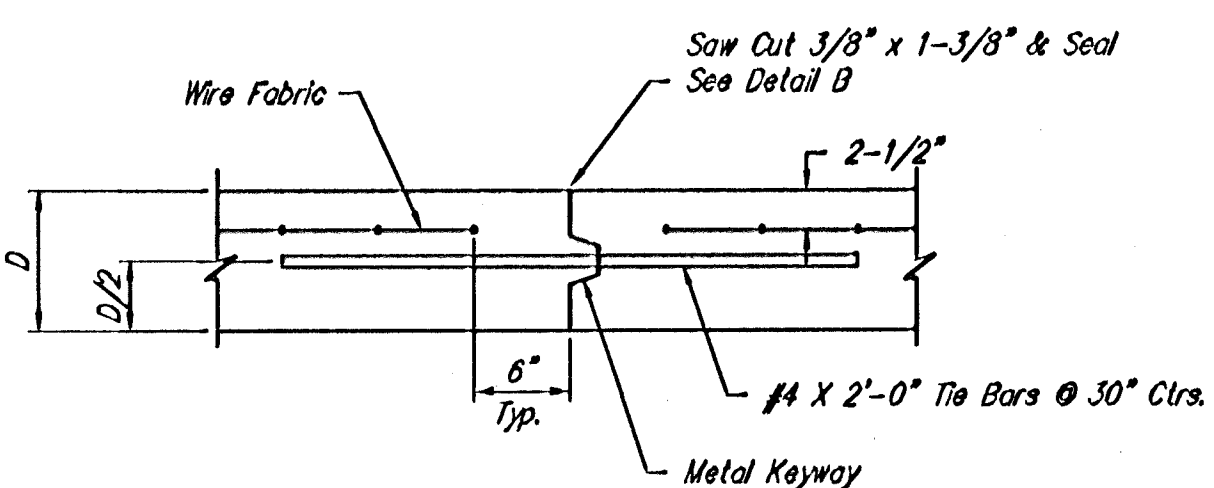
Scale: 1" = 20'



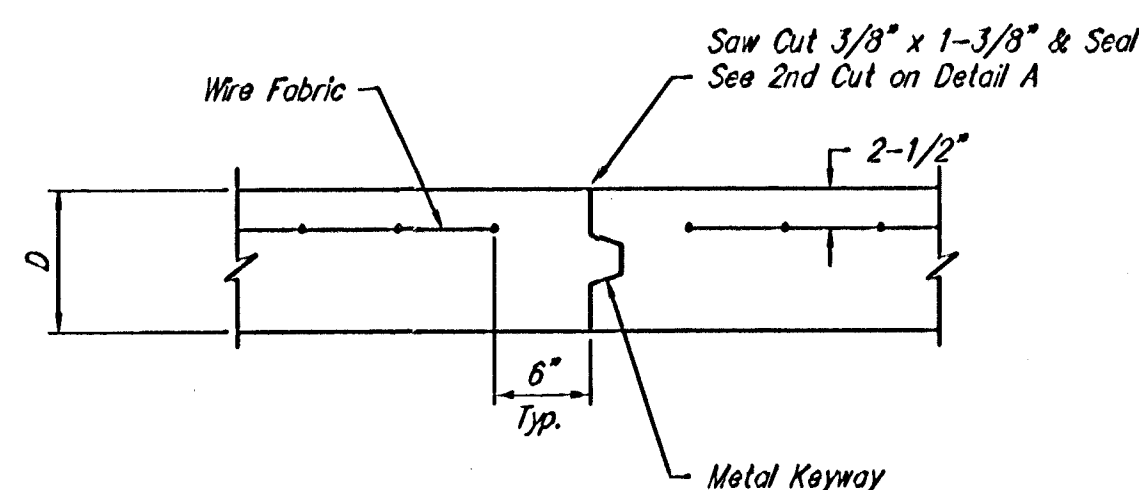
CONTRACTION JOINT DETAIL (C.J.)



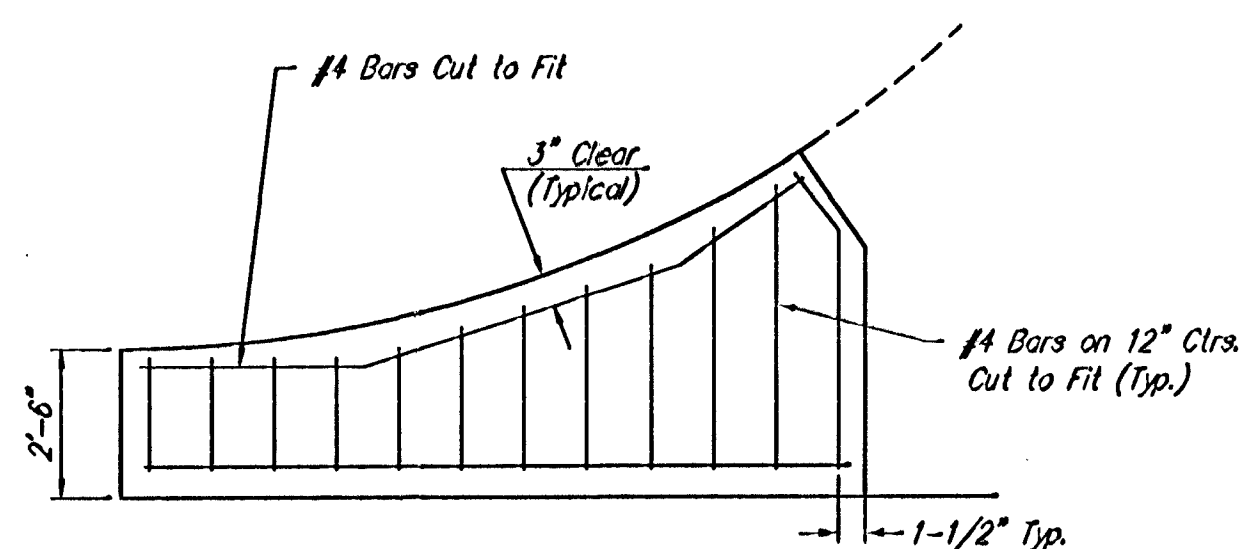
LONGITUDINAL JOINT DETAIL (L.J.)



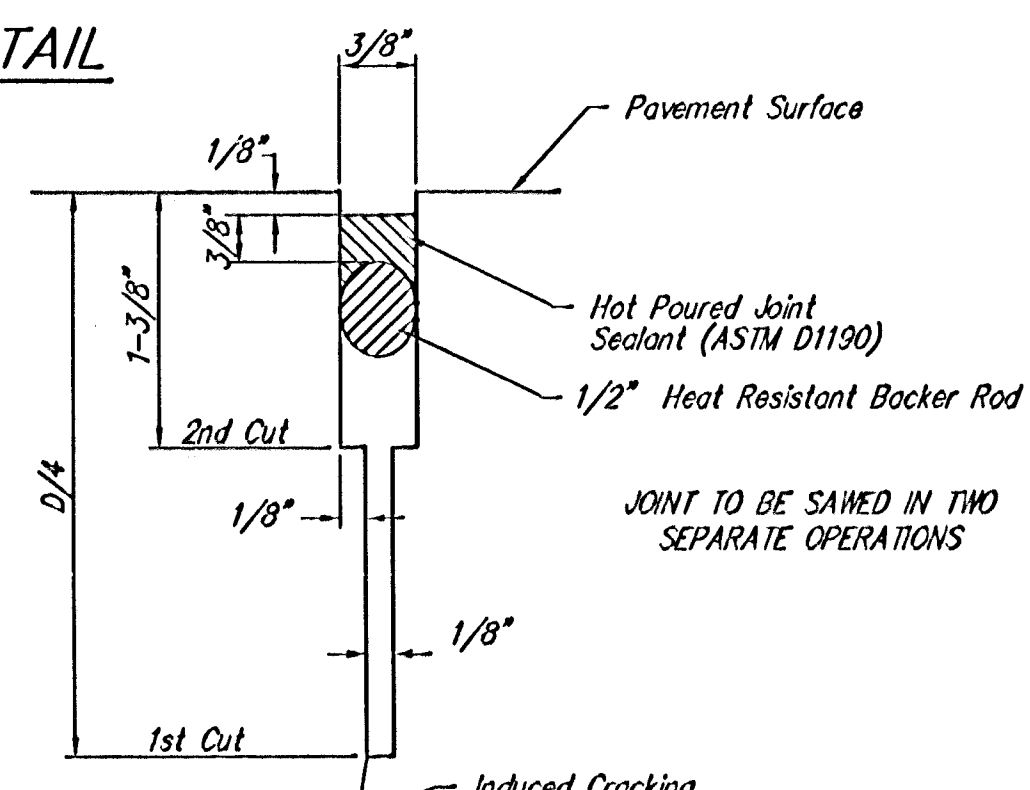
OPTIONAL LONGITUDINAL JOINT DETAIL (L.J.) (CONSTRUCTION JOINT)



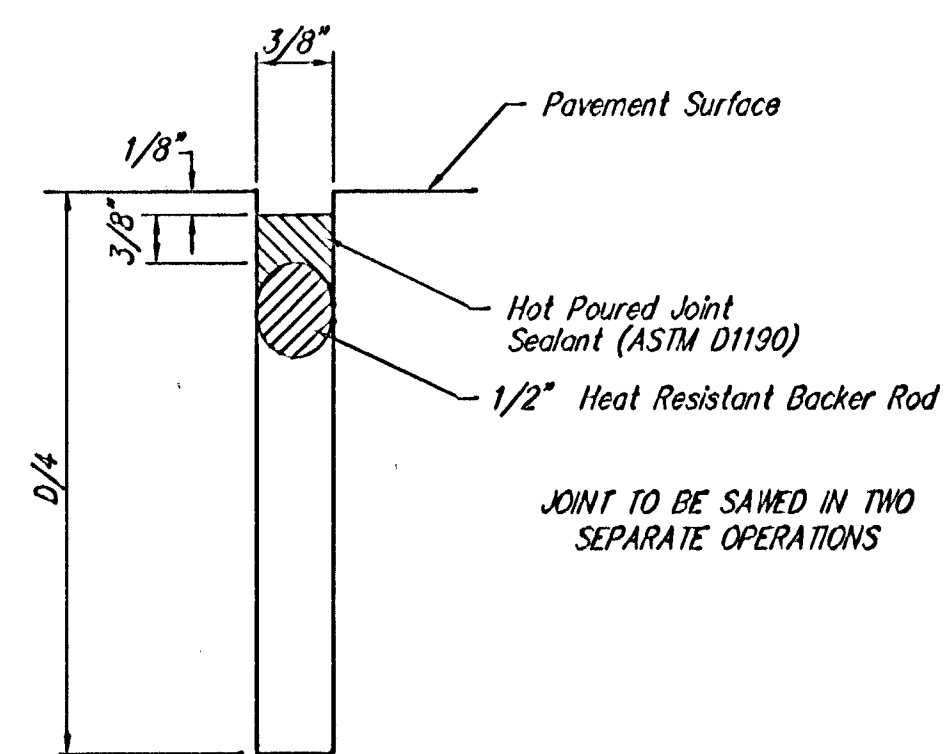
OPTIONAL CONTRACTION JOINT (CONSTRUCTION JOINT)



WING REINFORCING DETAIL



SAW JOINT DETAIL "A"



SAW JOINT DETAIL "B"

NOTE: 6" X 12" WAXWA Wire Fabric Reinforcing Shall Be Placed So That The Wires With The 6" Spacing Will Run Parallel With The Longitudinal Joints.

		Lulu Street Paving VALLEY GUTTER DETAILS	
<small>Baughman Company, P.A. 315 Ellis & Walnut, KS 67111 P 316-262-7771 F 316-262-6149 ENGINEERING SURVEYING PLANNING LANDSCAPE ARCHITECTURE</small>			
PROJECT NUMBER 47283910	REVISIONS	DESIGN STAFF APPROVED DATE 05/04	DRAWN STAFF DATE 05/04
SCALE NONE		SHEET 4 OF 18	
<small>Hidden/Glen/Lulu/VGDetail</small>		<small>0207-e378</small>	