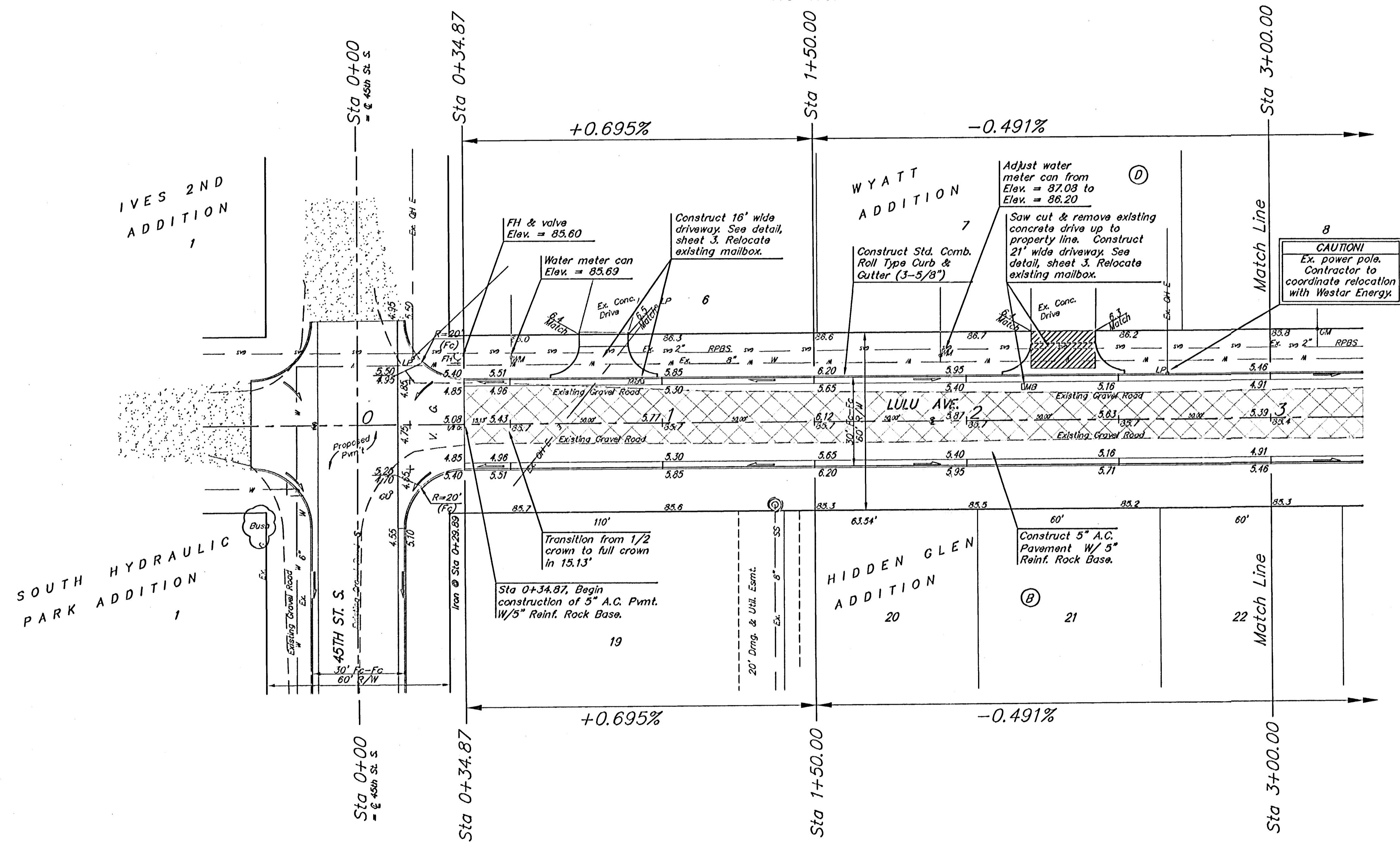


BENCHMARK:  
 C.O.W. benchmark, SE  
 corner of intersection of  
 Hydraulic & 43rd St. S.  
 25.5' E and 35' S of  
 centerline.  
 Elev. = 84.99 City Datum

Scale: 1" = 20'  
 = Iron

P.V.I.  
 Elev. = 86.20  
 NO V.C.



**CAUTION!**  
 Ex. power pole.  
 Contractor to  
 coordinate relocation  
 with Westar Energy.

**NOTE:**  
 Street sign removed & reset,  
 mailboxes removed & reset,  
 removal of landscape material,  
 water meter can adjustments, etc.  
 shall all be incidental to bid item  
 "Site Clearing and Restoration".

**NOTE:**  
 Paving Contractor to remove  
 all existing landscape  
 material from R/W and  
 return to property owner.

**NOTE:** ROLL TYPE CURB & GUTTER TO  
 BE CONSTRUCTED ON THE  
 PAVEMENT SHOWN ON THIS SHEET.  
 TOP OF CURB ELEVATIONS ARE  
 GIVEN FOR FULL HEIGHT CURB.

	Lulu Street Paving <b>Sta. 0+00 to          Sta. 3+00</b> STREET IMPROVEMENTS	
	<small>Baughman Company, P.A. 314 Elm &amp; Walnut, St. Louis, MO 63101 P 314-352-7171 F 314-352-7179          ENGINEERING   SURVEYING   PLANNING   LANDSCAPE ARCHITECTURE</small>	
PROJECT NUMBER 472-83910	DESIGN MWS	DRAWN TMS
REVISIONS	APPROVED DATE 03/05	SCALE Noted SHEET
		<b>5 OF 18</b>
<small>HiddenGlen/Lulu</small>		<small>03-07-E378</small>