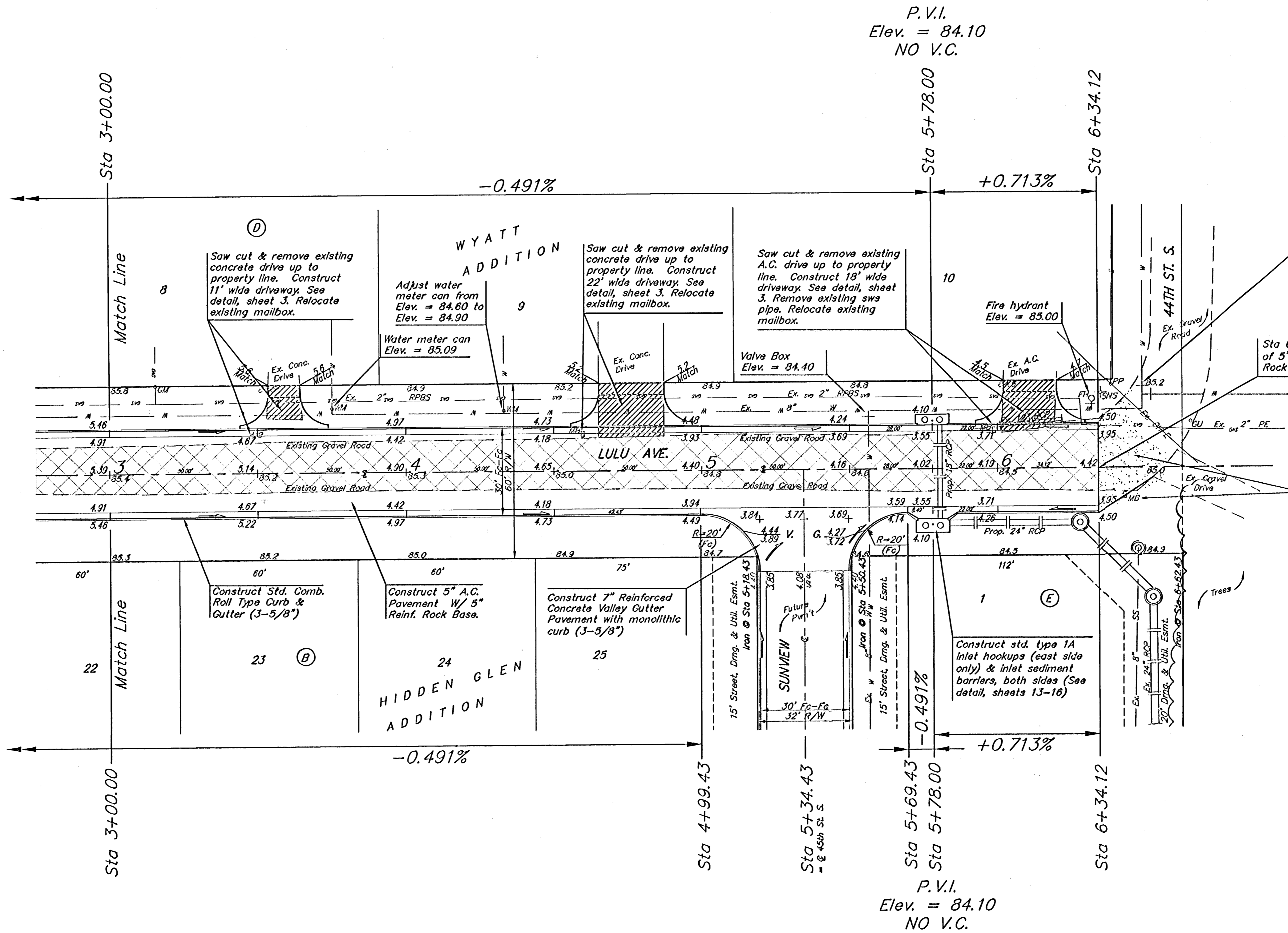


BENCHMARK:  
 C.O.W. benchmark, SE  
 corner of intersection of  
 Hydraulic & 43rd St. S.  
 25.5' E and 35' S of  
 centerline.  
 Elev. = 84.99 City Datum

Scale: 1" = 20'  
 • = Iron



Waterline and valves in 44th St. S. were plan located. Contractor to verify valves locations and adjust/replace valve box as needed.

Sta 6+34.12, End construction of 5" A.C. Pmnt. W/5" Reinf. Rock Base.

Construct gravel taper to match existing gravel road. Cost of gravel taper to be incidental to "Site Clearing & Restoration". Relocate existing mailbox.

NOTE:  
 Street sign removed & reset, mailboxes removed & reset, removal of landscape material, water meter can adjustments, etc. shall all be incidental to bid item "Site Clearing and Restoration".

NOTE:  
 Paving Contractor to remove all existing landscape material from R/W and return to property owner.

P.V.I.  
 Elev. = 84.10  
 NO V.C.

P.V.I.  
 Elev. = 84.10  
 NO V.C.

NOTE:  
 ROLL TYPE CURB & GUTTER TO BE CONSTRUCTED ON THE PAVEMENT SHOWN ON THIS SHEET. TOP OF CURB ELEVATIONS ARE GIVEN FOR FULL HEIGHT CURB.

		Lulu Street Paving <b>Sta. 3+00 to          Sta. 6+34.12</b> STREET IMPROVEMENTS	
<small>Baughman Company, P.A. 315 Elm &amp; Walnut, 1871111 P 316-303-1111 F 316-303-1149          ENGINEERING   SURVEYING   PLANNING   LANDSCAPE ARCHITECTURE</small>			
PROJECT NUMBER 472-83910	DESIGN MWS	DRAWN TMS	
REVISIONS	APPROVED	DATE 03/05	
	SCALE Noted	SHEET <b>6 OF 18</b>	
<small>HiddenGlen/Lulu</small>		<small>02-07-E378</small>	