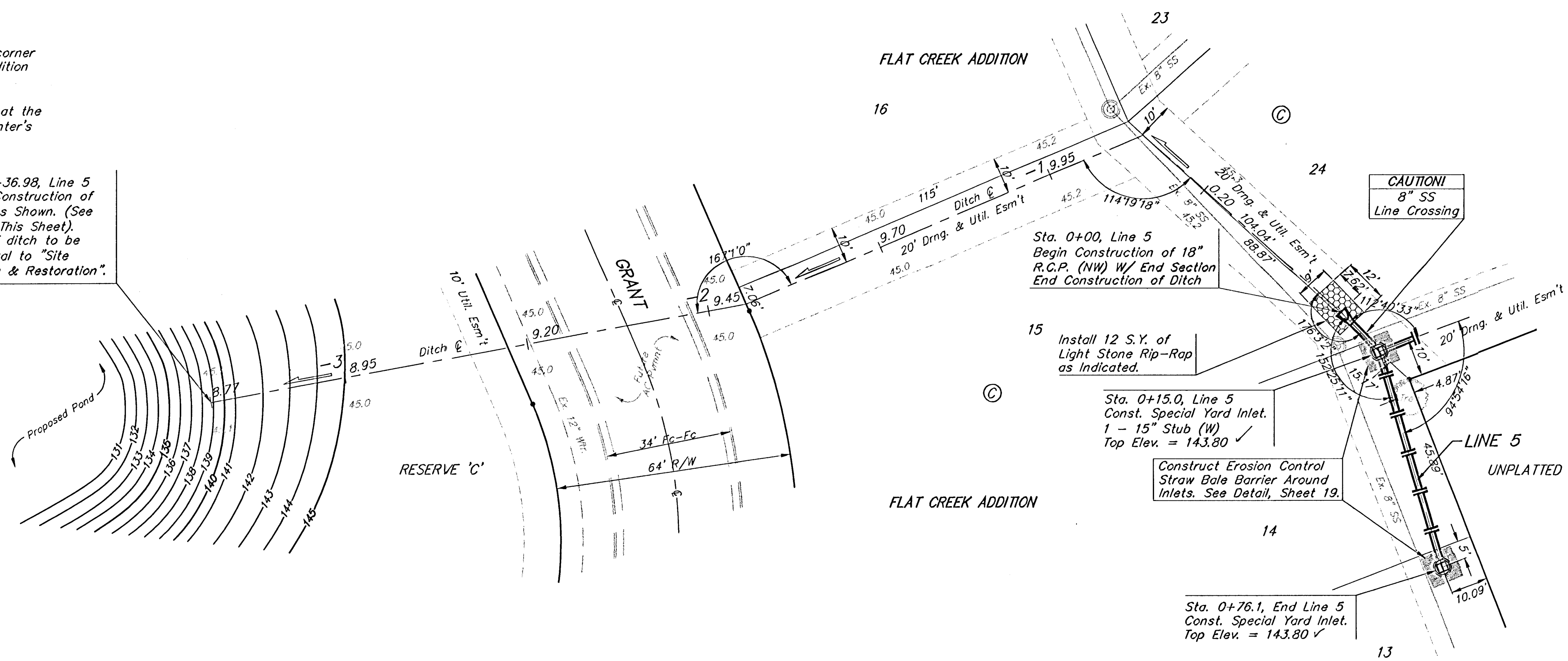


**BENCHMARKS:**  
 BM#1: "□" Cut in top of curb, east return of SE corner of Lotus & Parkridge.  
 Elev. = 145.99 (City Datum)

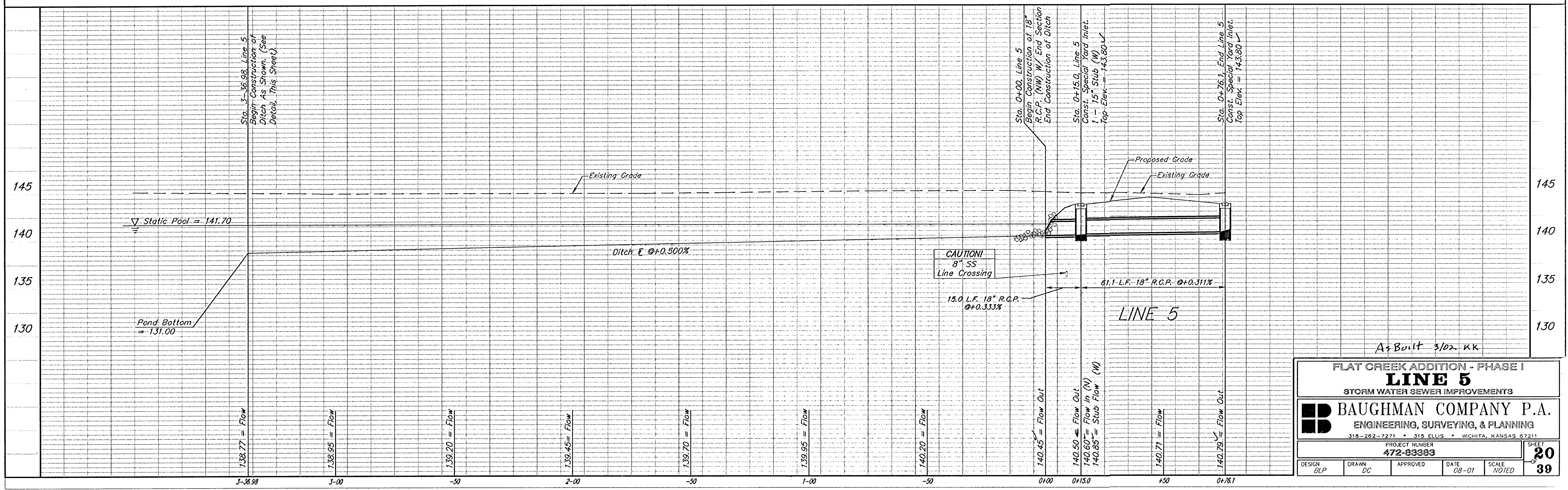
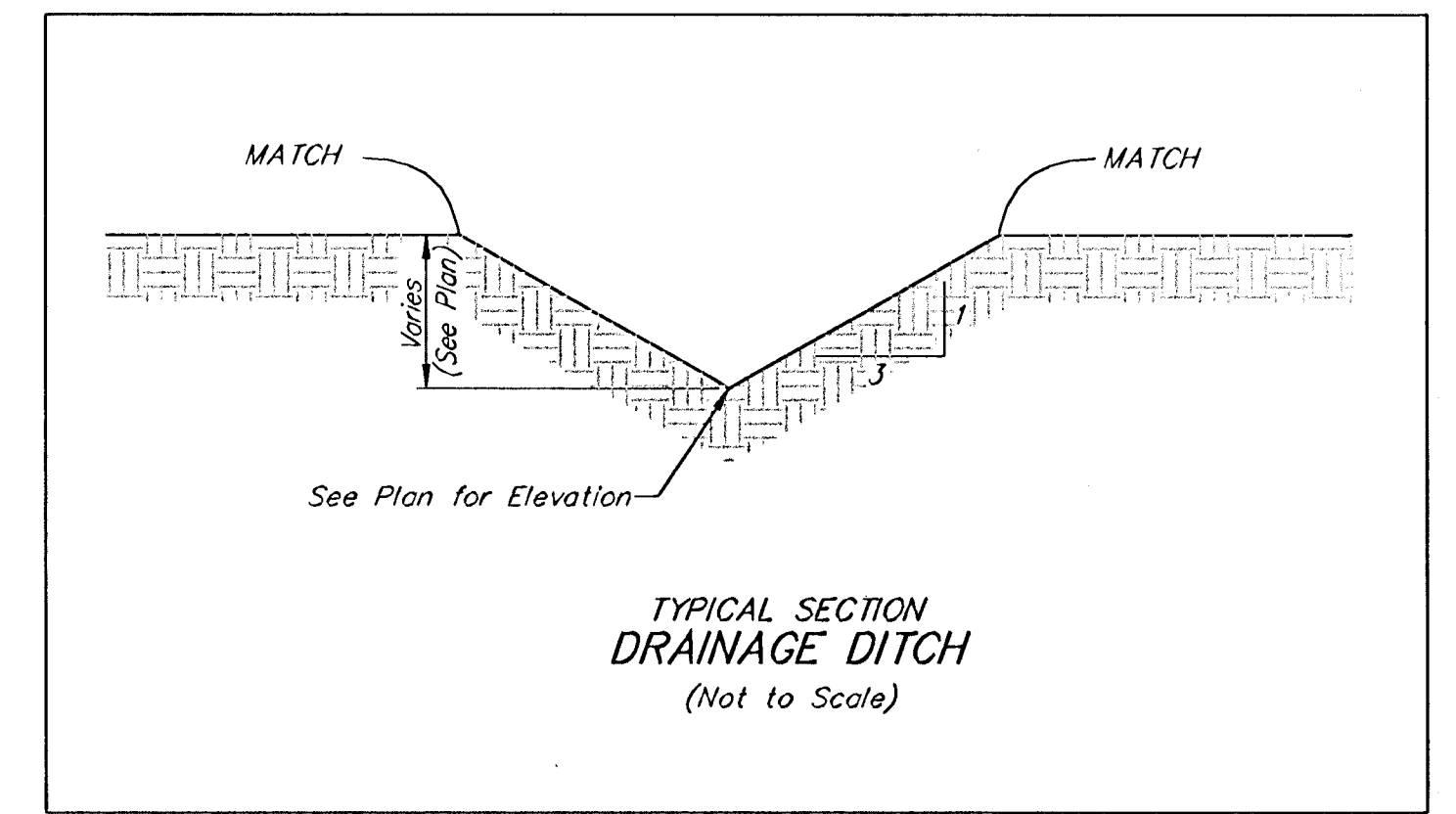
BM #2: "X" Cut on walk at NW corner of Lot 1, Block F, Flat Creek Addition.  
 Elev. = 146.22 (City Datum)

BM #3: "□" Cut in top of curb at the NW corner of Lot 1, Block B, Hunter's Ridge Addition.  
 Elev. = 146.63 (City Datum)

Sta. 3+36.98, Line 5  
 Begin Construction of Ditch As Shown. (See Detail, This Sheet).  
 Cost of ditch to be incidental to "Site Clearing & Restoration".



SCALE:  
 1" = 20' HORIZONTAL  
 1" = 5' VERTICAL  
 • = IRON



A+Built 3/02 KK

FLAT CREEK ADDITION - PHASE I			
<b>LINE 5</b>			
STORM WATER SEWER IMPROVEMENTS			
<b>BAUGHMAN COMPANY P.A.</b>			
ENGINEERING, SURVEYING, & PLANNING			
315-262-7271 • 315 ELLIS • WICHITA, KANSAS 67211			
PROJECT NUMBER		SHEET	
472-83383		20	
DESIGN		SCALE	
BLP	DC	APPROVED	NOTED
DATE	08-01	SCALE	NOTED