

Street Improvements to Serve Brush Creek 3rd Addition

(SE Corner of 37th Street & Woodlawn)

Project No.

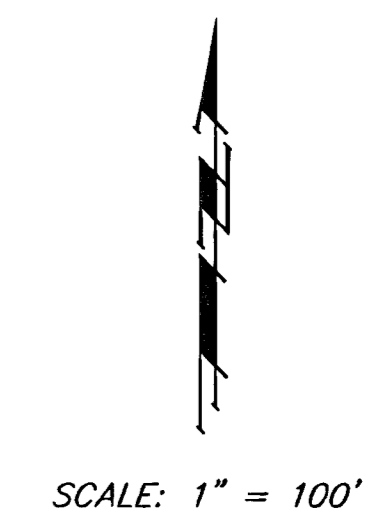
O.C.A. No.

472-83131

765663

CITY OF WICHITA, KANSAS

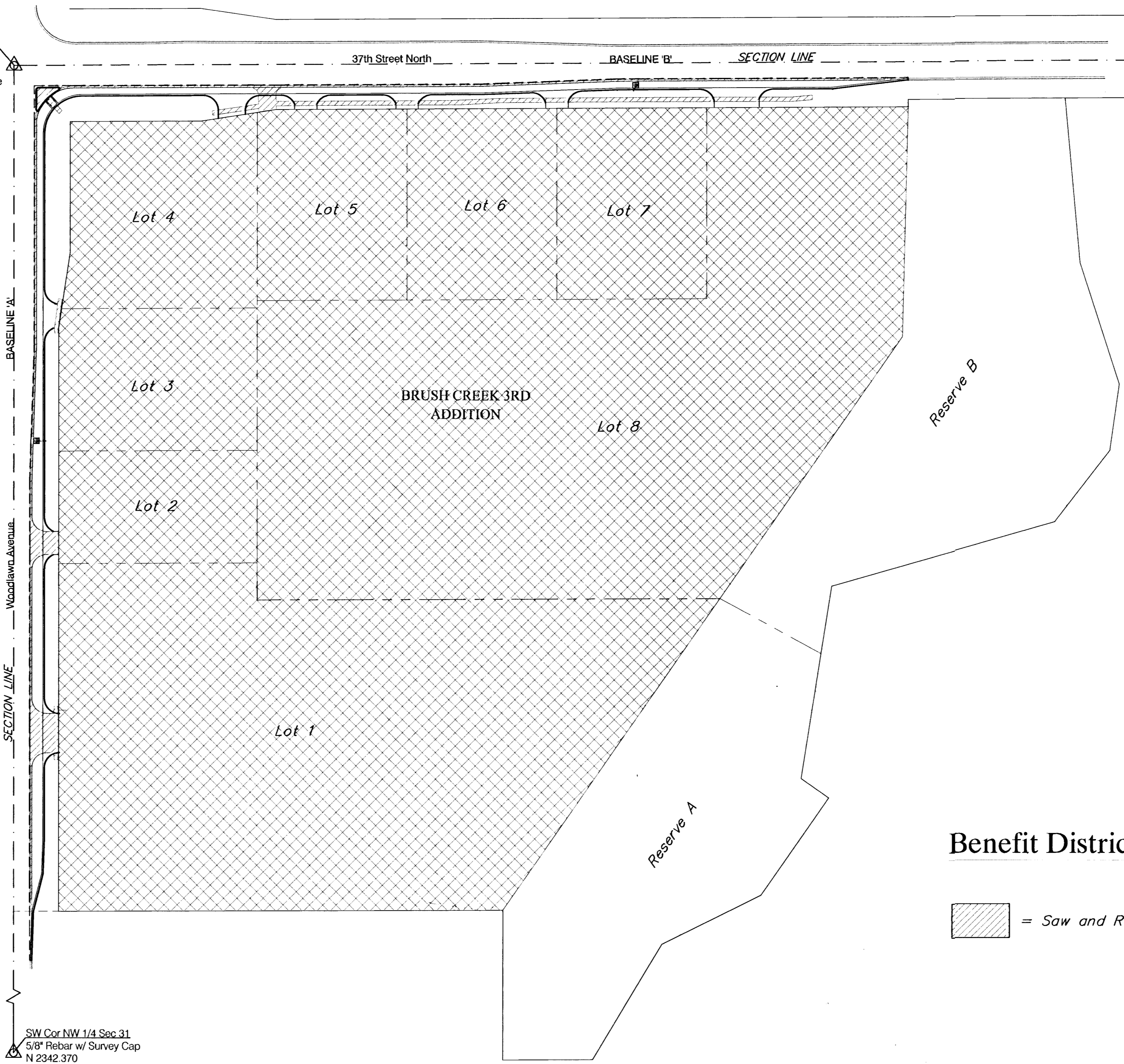
Michael E. Lindebak, P.E. City Engineer



NW Cor NW 1/4 Sec 31
BL 'A' Sta. 13+00.00
BL 'B' Sta. 0+00.00
3/4" Iron Pipe in Thimble
N 5000.000
E 2000.000

NE Cor NW 1/4 Sec 31

WHISPERING BROOK
COMMERCIAL
2ND ADDITION



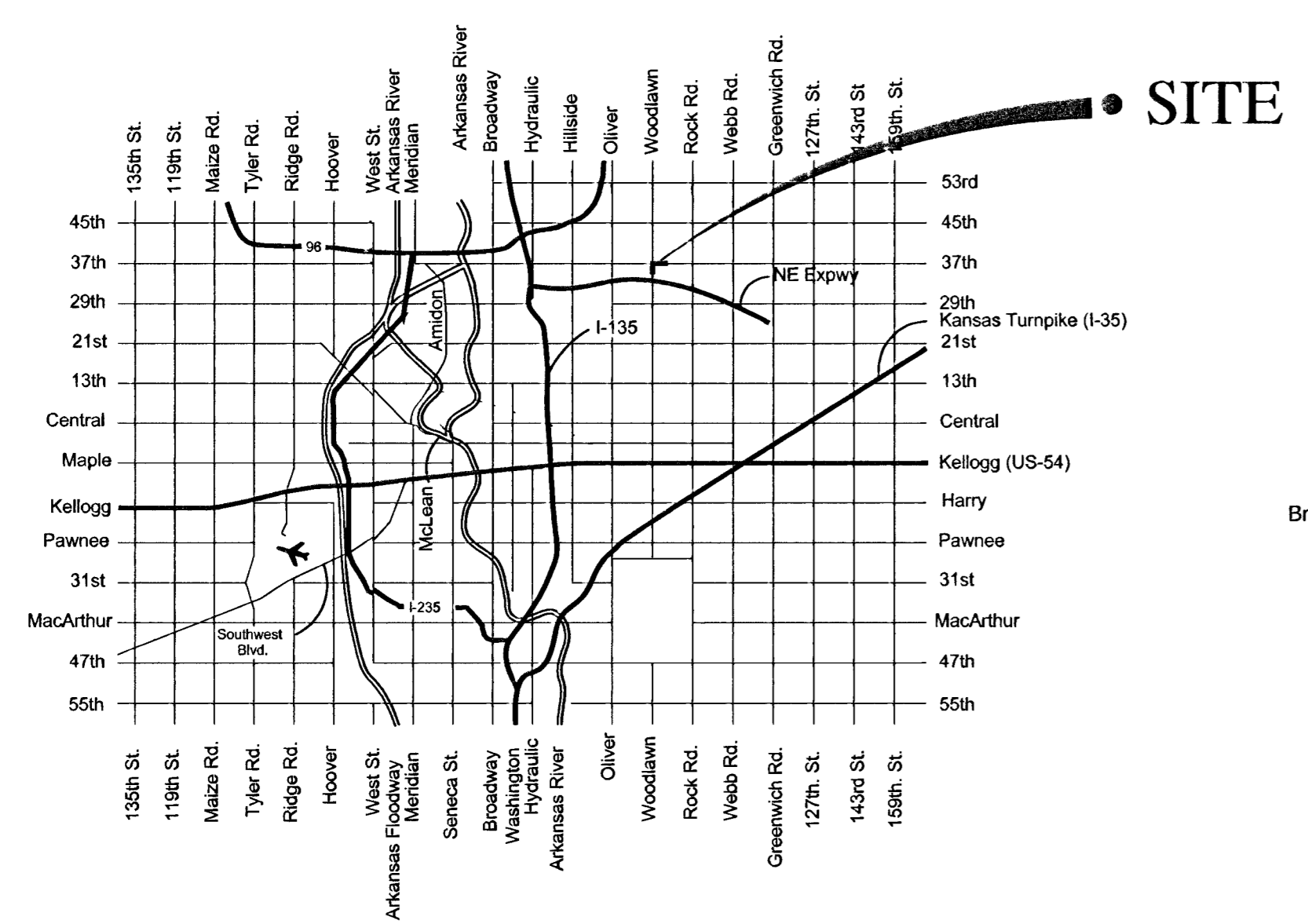
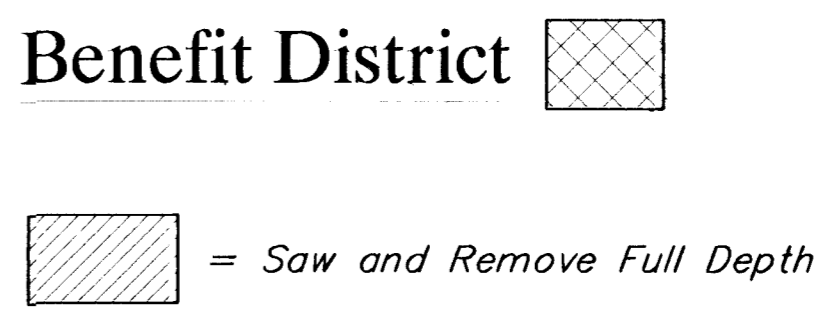
Index

Title Sheet	1
General Notes	2
Typical Pavement Sections	3
Pavement Details	4
Entrance Details	5
Paving Plans (WoodLawn)	6-7
Paving Plans (37th Street)	8-9
Traffic Island Detail	10
Storm Sewer Details	11-16
Traffic Signal Plan	16
Traffic Signal Details	17-18
Pavement Marking Plan	19
Marking Details	20
Earthwork Cross Sections	21-28
Earthwork Quantities	29
Copy of Plat	30

Benchmark

BM #1 - City of Wichita Benchmark Disc -
S.E. Corner Woodlawn and 37th Street N.,
75.7' East & 56.3' South of Centerlines.
Elev. = 183.04 (City Datum)

Benefit District



VICINITY MAP

SW Cor NW 1/4 Sec 31
5/8" Rebar w/ Survey Cap
N 2342.370
E 1999.943

