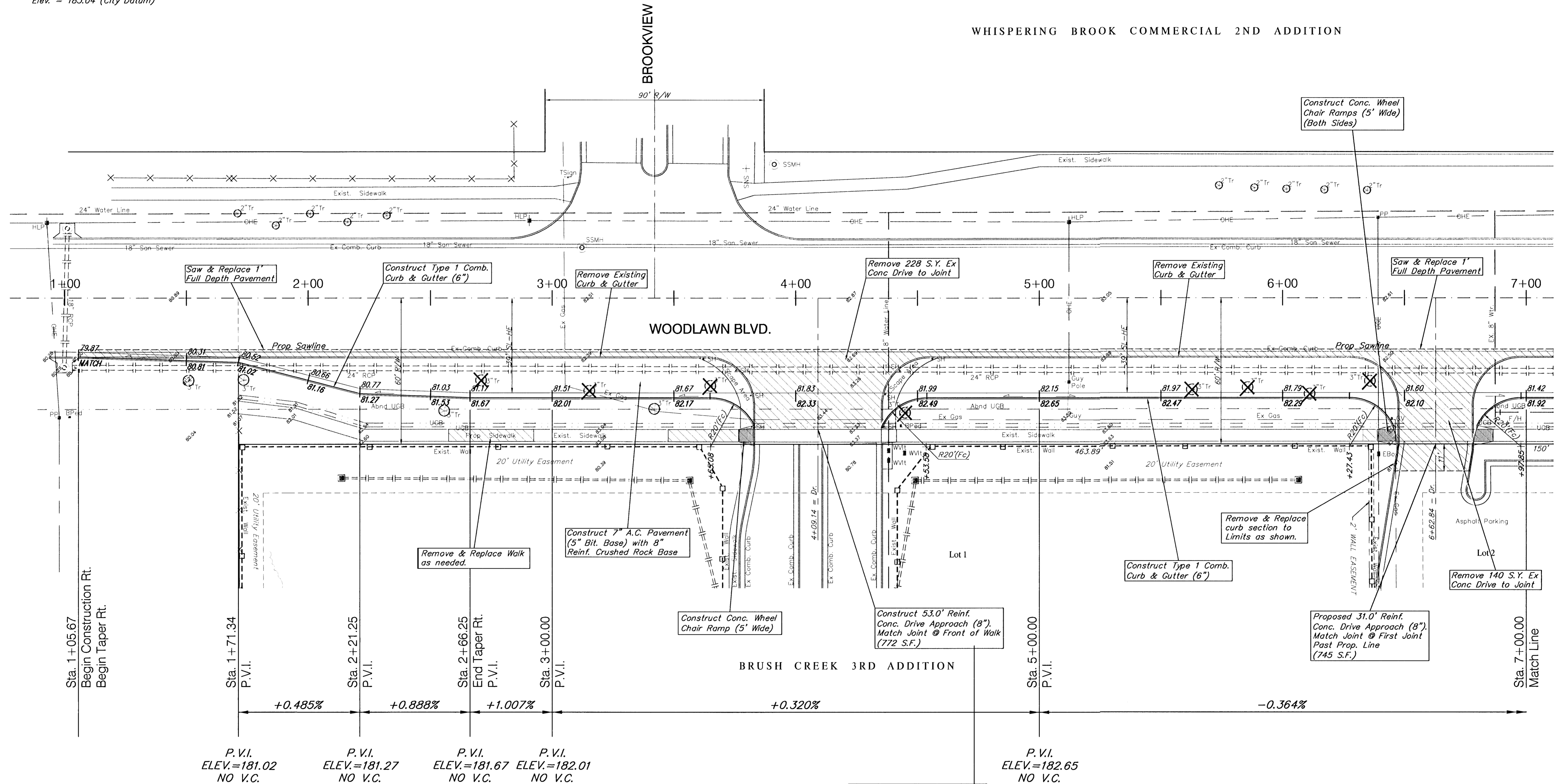


BENCHMARK:

BM #1 - City of Wichita Benchmark Disc -
Woodlawn and 37th Street North, S.E. Corner
if intersection 75.7' east & 56.3' south of
centerline, both.
Elev. = 183.04 (City Datum)

SCALE:
1" = 20' HORIZONTAL

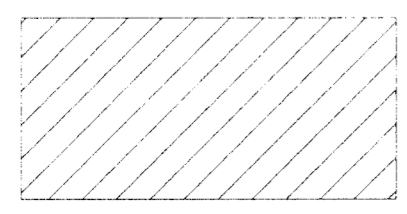
WHISPERING BROOK COMMERCIAL 2ND ADDITION



Note:
Trees/Shrubs to be removed are marked thus:



Note:
Pavement, Sidewalks, and Etc. To Be Removed Are Indicated By:



Irrigation Systems within Public R/W in conflict with the New Construction to be Removed and Replaced as Necessary.

Power Poles & Utilities in Conflict to be Relocated by "Others" Prior to Construction.

Contact LaCrosse Apts. Maintenance Director prior Construction along Woodlawn at Apartment Entrance.

PROJECT NUMBER 472-83131	SHEET NAME Pav01	ENGINEERING DIRECTORY F:\37Woodlawn\Pav
DESIGN JFB	DRAWN KWR	APPROVED JFB
DATE April 01	SCALE Noted	BAUGHMAN NO 99-04-E338

STREET IMPROVEMENTS
BRUSH CREEK 3rd ADDITION - (LOTS 1-8)
PAVING PLANS
B.L. A' Sta. 1+05.87 - B.L. A' Sta. 7+00.00

BAUGHMAN COMPANY, P.A.
ENGINEERING, SURVEYING, & PLANNING
316-262-7271 • 315 ELLIS • WICHITA, KANSAS 67211