

# STREET IMPROVEMENTS

to serve

## AUBURN HILLS 12TH ADDITION Phase I

- NINEIRON:** From the South Line of Maple to the North Line of Taft St.
- TAFT STREET:** From the South Line of Nineiron to the East Line of Decker St.
- DECKER STREET:** From the North Line of Valley Hi Road to the North Line of Taft st.
- NINEIRON COURT (Lots 1-9, Block A):** From the East Line of Nineiron to and Including Tee Intersection
- NINEIRON COURT (Lots 12-21, Block A):** From the East Line of Nineiron to and Including Tee Intersection

CITY OF WICHITA, KANSAS

Michael E. Lindebak, P.E. City Engineer

Project Number

**472-83290**

O.C.A. Number:

**765659**

### GENERAL NOTES:

- Contractor will be required to provide notice to utility companies a minimum of twenty-four (24) hours prior to any excavation, as follows:
 

Kansas One-Call	687-2470
Cox Communications	262-4270
or	263-2061
K.P.L. Gas Service Company	263-7511
Kansas Gas & Electric Company	264-1141
Peoples Nat. Gas Company	942-8350
Southwestern Bell Telephone Company	1-571-2611
City of Wichita Water Department	268-4908
City of Wichita Sewer Maintenance	268-4071

The Contractor must notify the following in case of an emergency:
- Utility service lines, poles, valve boxes, meters, and appurtenances are to be adjusted as necessary by others prior to construction unless the plans specifically call for their adjustment by the Contractor or unless the plans specifically identify a utility to be adjusted by its owner during construction. Existing utilities and their location, as shown on the plans, represent the best information obtainable for design. The contractor will be required to work around existing utilities within the right-of-way which do not conflict with proposed construction.
- Rubble from the removal of miscellaneous structures and excess excavation which is to be wasted shall be disposed of on sites to be provided by the Contractor. These sites shall be approved by the Engineer as to suitability, appearance and site location. Locations that, in the opinion of the Engineer, will leave an unsightly appearance will not be approved. All disposal sites must be approved by the Kansas Department of Health and Environment. Material either stockpiled or disposed of in a flood plain would require a Kansas State Board of Agriculture permit. Any material dumped in waters of the United States or wetlands is subject to U.S. Corps. of Engineers permitting regulations. Any material buried or stockpiled beyond approved construction limits would require additional archaeological investigations unless buried in a previously approved borrow location.
- Trees and shrubs in public right-of-way which are in direct conflict with proposed new construction shall be removed by the Contractor with the Engineer's approval. Trees and shrubs which are not in direct conflict with proposed new construction shall be saved and protected from damage.
- Limits of earthwork shall match existing ground elevations at the right-of-way line unless otherwise noted on the plans with a new finished grade elevation. When a new finished grade elevation is shown, the earthwork shall extend one foot beyond the right-of-way line and then sloped up or down using permissible slopes to match the existing ground surface.
- The Contractor shall adjust water valve boxes and fire hydrants as directed by the Engineer at the price bid for said adjustments. The Water Department shall field located water valves one time during construction when requested by Contractor. It shall be the Contractor's responsibility to preserve such field locations during the construction process. Water valves, water valve boxes or fire hydrants damaged during construction shall be repaired by the Contractor at his own expense.
- The Contractor shall be responsible for preserving property irons. The Contractor will be required to re-establish any property irons which are damaged or destroyed by his construction operations. Such irons shall be re-established by a licensed land surveyor in accordance with state law.
- All areas disturbed by construction shall be seeded at 300 lbs./acre with Rye Grass, fertilized with 15-26-16 ratio at 350 lbs./acre, and mulched with 2 tons prairie hay/acre immediately following construction. Contractor shall prepare ground per City specifications.
- A saw cut of at least one-half the depth of existing surface courses of one-fourth the depth of the existing total pavement thickness shall be provided at locations where proposed construction abuts as existing surface course or pavement for which partial removal of that surface or pavement is required. Sawed joint to facilitate removal within three (3) feet of existing joints will not be permitted and for such instances the limits of removal shall extend to the existing joint. Such saw cuts will not be paid for directly and this cost shall be considered as subsidiary to the removal of the surface or pavement.

### Benchmarks

City Disc - 34.3' E. & 3.3' N. of  
S.W. Corner of N.W. 1/4, Sec. 25,  
T-27-S, R-2-W  
Elev. = 156.63 City Datum

City Disc - 135TH St. W. & Maple,  
30' N. & 15' E. @ Both.  
Elev. = 150.20 City Datum

### Sheet Index

Title Sheet	1
35' Pavement Detail	2
29' Pavement Detail	3
Sign Detail	4
Standard Drive Detail	5
Miscellaneous Details	6
Decker Street	7-8
Taft Street	9
Nineiron	10-16
Nineiron Ct. (Lots 1-9, Block A)	17
Nineiron Ct. (Lots 12-21, Block A)	18
Earthwork Cross Sections	19-28
Copy of Plat	29-30

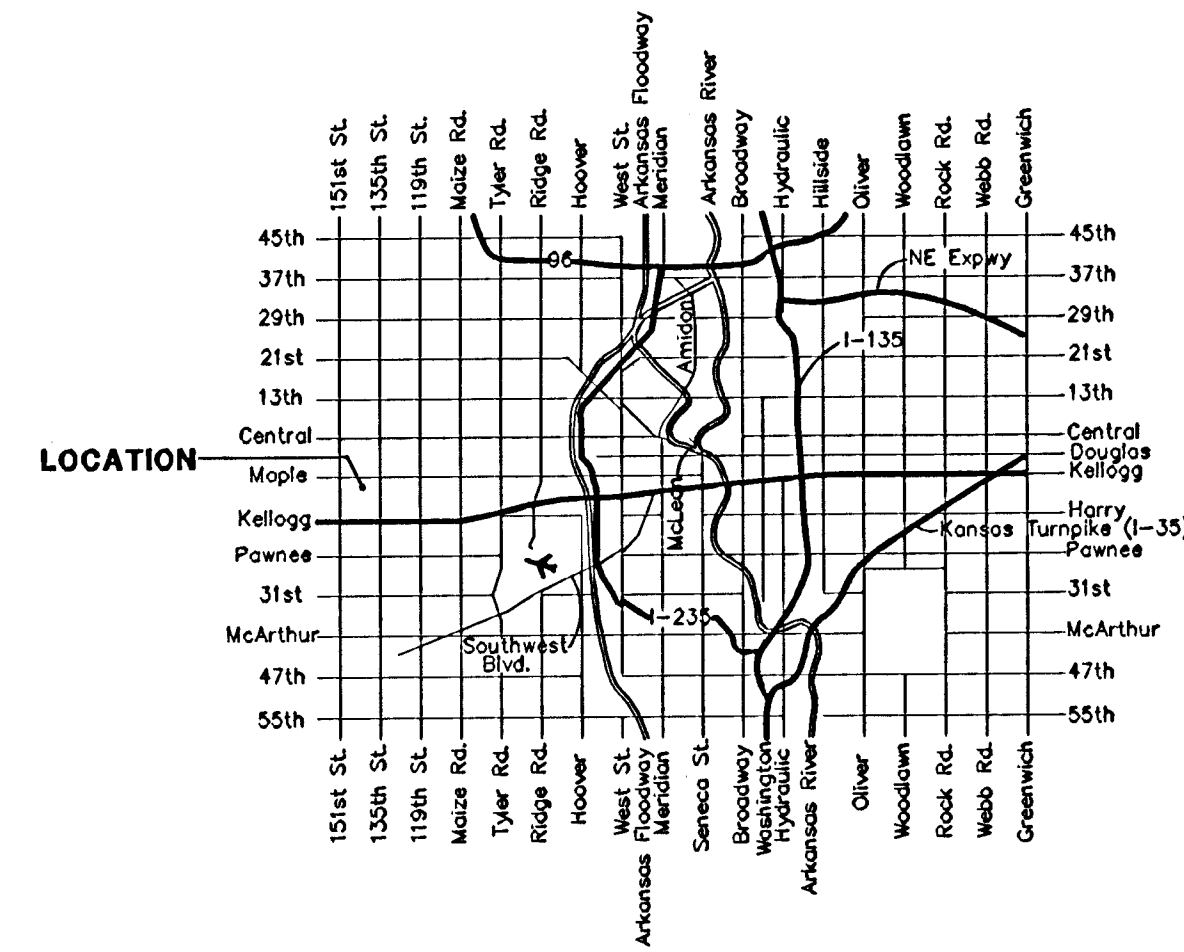
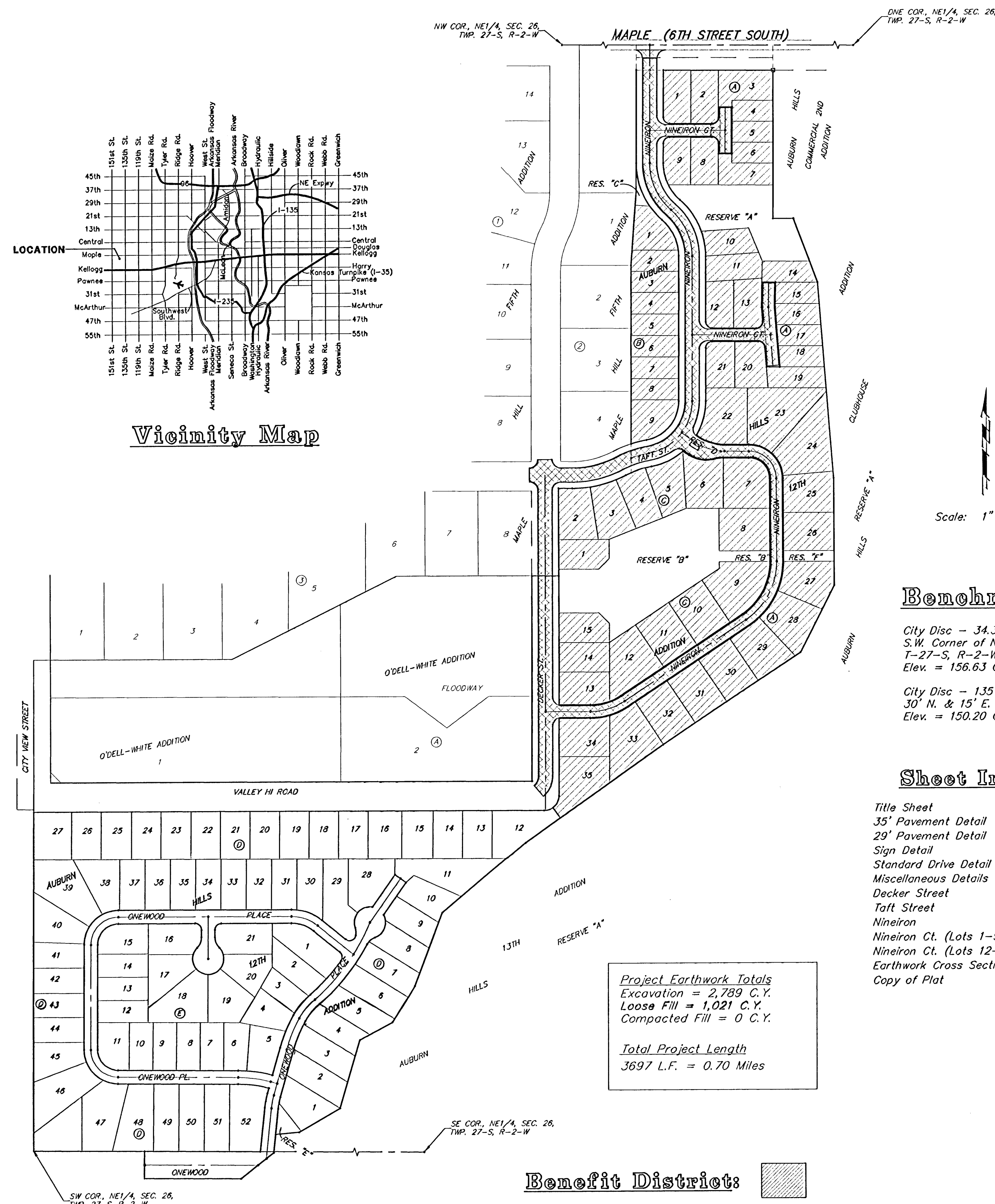
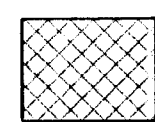
**Project Earthwork Totals**  
Excavation = 2,789 C.Y.  
Loose Fill = 1,021 C.Y.  
Compacted Fill = 0 C.Y.

**Total Project Length**  
3697 L.F. = 0.70 Miles

Benefit District:



Proposed Streets:



Vicinity Map

