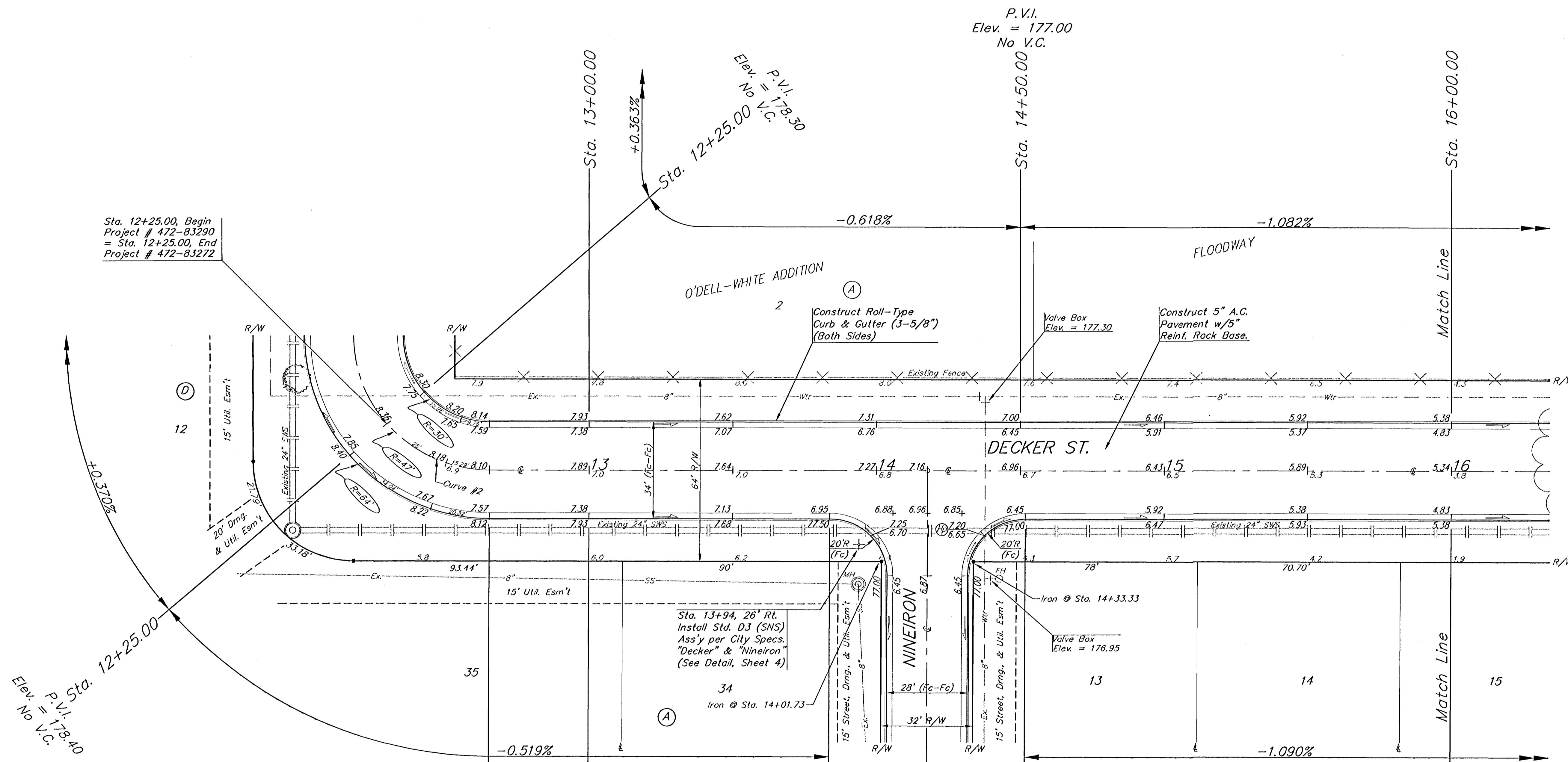


BENCH MARKS:
 City Disc - 34.3' E. & 3.3' N. of
 S.W. Corner of N.W. 1/4, Sec. 25,
 T-27-S, R-2-W.
 Elev. = 156.63 City Datum

City Disc - 135TH St. W. & Maple,
 30' N. & 15' E. of Both.
 Elev. = 150.20 City Datum

SCALE: 1" = 20'
 • = Iron



Sta. 12+25.00, Begin
 Project # 472-83290
 = Sta. 12+25.00, End
 Project # 472-83272

Elev. = P.V.I. Sta. 12+25.00
 No V.C. = 178.40

Elev. = P.V.I. Sta. 12+25.00
 No V.C. = 178.30

P.V.I.
 Elev. = 177.00
 No V.C.

O'DELL-WHITE ADDITION

DECKER ST.

AUBURN HILLS 12TH ADDITION

Subdivision Bench Marks		
Street & Station	Location Description	Elevation
Taft 0+37.01, 17' Rt.	Adjacent to Fire Hydrant at intersection of Decker and Taft on SE corner.	
Nineiron 5+53.11, 17' Rt.	Adjacent to Fire Hydrant at intersection of Nineiron & Nineiron Ct. on SW corner (Lot 21, Block A)	
Nineiron 10+72.89, 17' Rt.	Adjacent to Fire Hydrant at intersection of Nineiron & Nineiron Ct. on SW corner (Lot 9, Block A)	
Nineiron 0+37.00, 14' Lt.	Adjacent to Fire Hydrant at intersection of Nineiron & Decker on NE corner.	
Nineiron 5+04.72, 14' Lt.	Adjacent to Fire Hydrant between Lots 9 and 10, Block C.	

Curve #2
 Curve Data Based on Centerline
 Rad. = 47' Delta = 89° 59' 30" Tangent = 46.99'
 Arc = 73.82' L.C. = 66.46' Def/Ft. = 36.57207 Min.

Station	Arc	FACE CHORD LENGTHS		Defl.	T. Defl.
		8' Lt.	8' Rt.		
11+91.47	-	-	-	0'00"00"	0'00"00"
12+00.00	8.53'	3.99'	13.05'	5'11"58"	5'11"58"
12+25.00	25.00'	11.56'	37.85'	15'14"19"	20'26"17"
12+50.00	25.00'	11.56'	37.85'	15'14"19"	35'40"54"
12+65.29	13.29'	7.13'	23.32'	9'19"11"	44'59"45"

AUBURN HILLS ADDITION - PHASE I
DECKER STREET
 STA. 12+25.00 TO STA. 16+00.00

BAUGHMAN COMPANY P.A.
 ENGINEERING, SURVEYING, & PLANNING
 318-262-7271 • 315 ELLIS • WICHITA, KANSAS 67211

PROJECT NUMBER
472-83280

DESIGN: DMV DRAWN: JAK APPROVED: DATE: 3-14-01 SCALE: NOTED SHEET: 7 OF 30