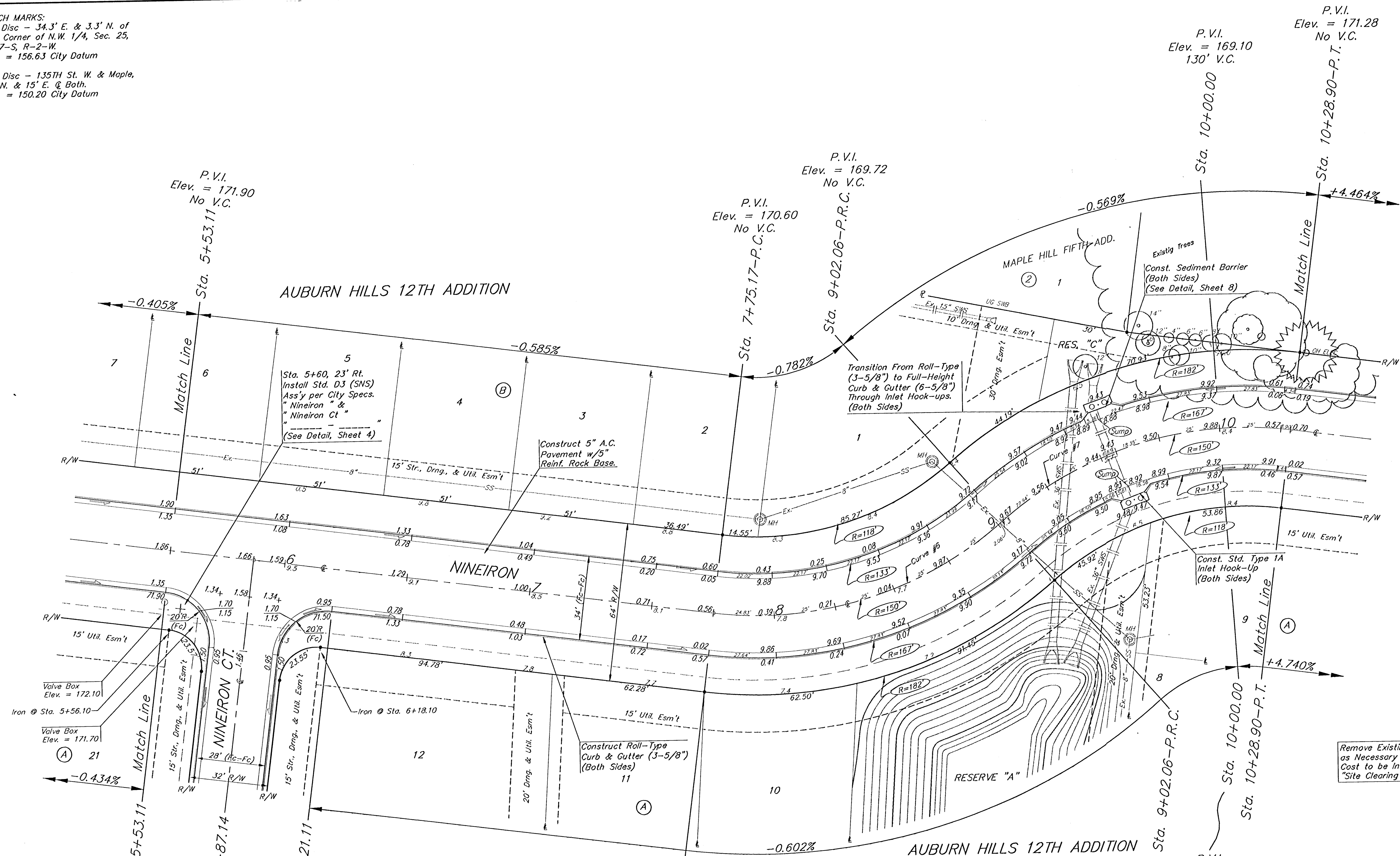


BENCH MARKS:
 City Disc - 34.3' E. & 3.3' N. of
 S.W. Corner of N.W. 1/4, Sec. 25,
 T-27-S, R-2-W.
 Elev. = 156.63 City Datum

City Disc - 135TH St. W. & Maple,
 30' N. & 15' E. @ Both.
 Elev. = 150.20 City Datum



SCALE: 1" = 20'
 • = Iron



Curve #6
 Curve Data Based on Centerline
 Rad. = 150' Delta = 48° 28' 00" Tangent = 67.52'
 Arc = 126.89' L.C. = 123.14' Del/Ft. = 11.45874 Min.

Station	Arc	FACE CHORD LENGTHS		Defl.	T. Defl.
		8' Lt.	8' Rt.		
7+75.17				0'00"00"	0'00"00"
8+00.00	24.83'	20.67'	28.93'	4'44'31"	4'44'31"
8+25.00	25.00'	20.81'	29.13'	4'46'28"	9'30'59"
8+50.00	25.00'	20.81'	29.13'	4'46'28"	14'17'27"
8+75.00	25.00'	20.81'	29.13'	4'46'29"	19'03'56"
9+02.06	27.06'	22.52'	31.53'	5'10'04"	24'14'00"

Curve #7
 Curve Data Based on Centerline
 Rad. = 150' Delta = 48° 27' 03" Tangent = 67.49'
 Arc = 126.84' L.C. = 123.10' Del/Ft. = 11.45952 Min.

Station	Arc	FACE CHORD LENGTHS		Defl.	T. Defl.
		8' Lt.	8' Rt.		
9+02.06				0'00"00"	0'00"00"
9+25.00	22.94'	26.74'	19.10'	4'22'53"	4'22'53"
9+50.00	25.00'	29.13'	20.81'	4'46'29"	9'09'22"
9+75.00	25.00'	29.13'	20.81'	4'46'29"	13'55'51"
10+00.00	25.00'	29.13'	20.81'	4'46'30"	18'42'21"
10+25.00	25.00'	29.13'	20.81'	4'46'29"	23'28'50"
10+28.90	3.90'	4.55'	3.25'	0'44'42"	24'13'32"

Remove Existing Trees Only
 as Necessary For Construction.
 Cost to be Included in Bid Item
 "Site Clearing & Restoration"

AUBURN HILLS ADDITION - PHASE I
NINEIRON
 STA. 4+29.73 TO STA. 10+28.90

BAUGHMAN COMPANY P.A.
 ENGINEERING, SURVEYING, & PLANNING
 316-262-7271 • 315 ELLIS • WICHITA, KANSAS 67211

PROJECT NUMBER: 472-83290
 SHEET: 11 OF 30
 DESIGN: DMV DRAWN: JAK APPROVED: DATE: 3-14-01 SCALE: NOTED