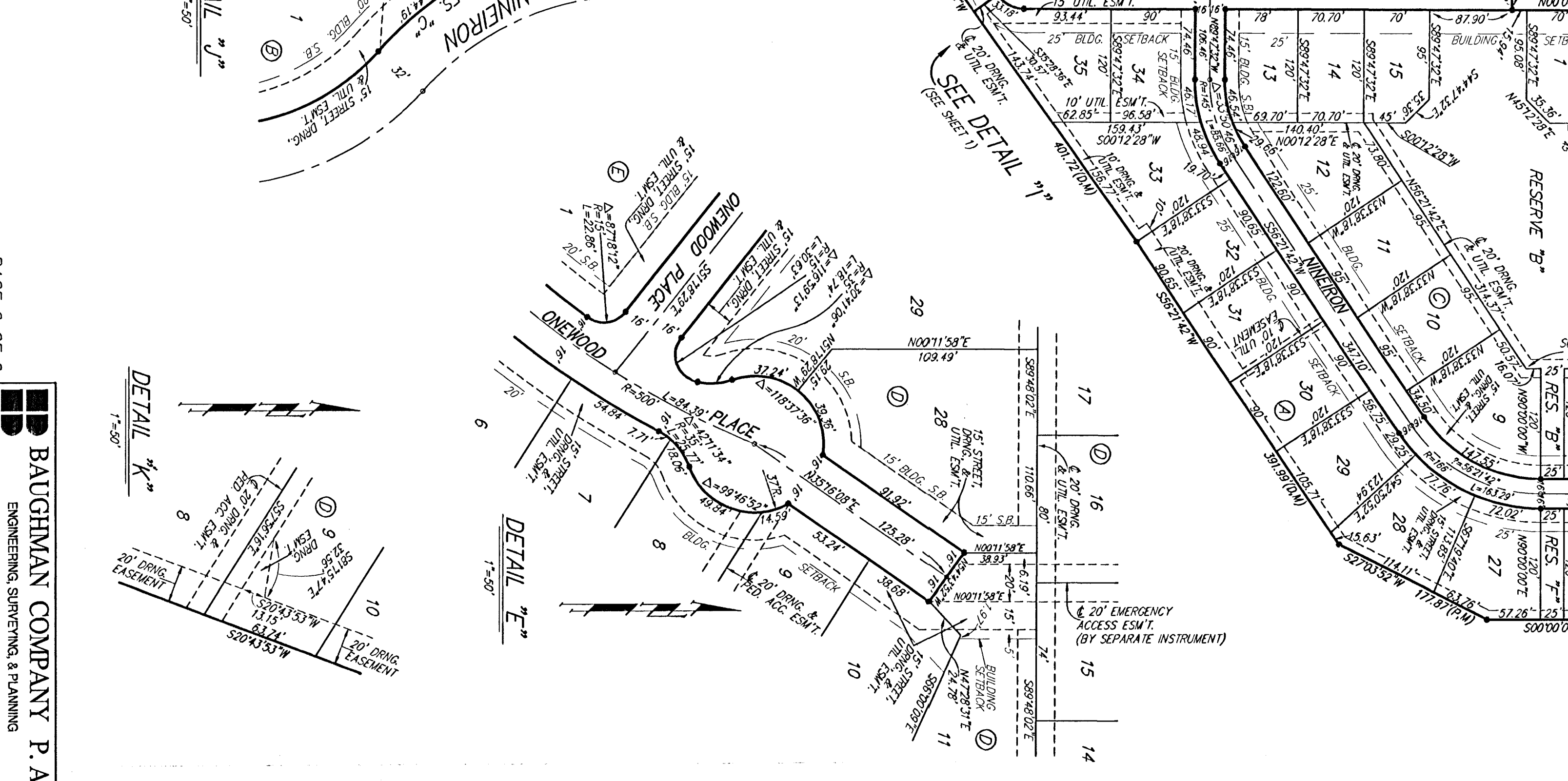
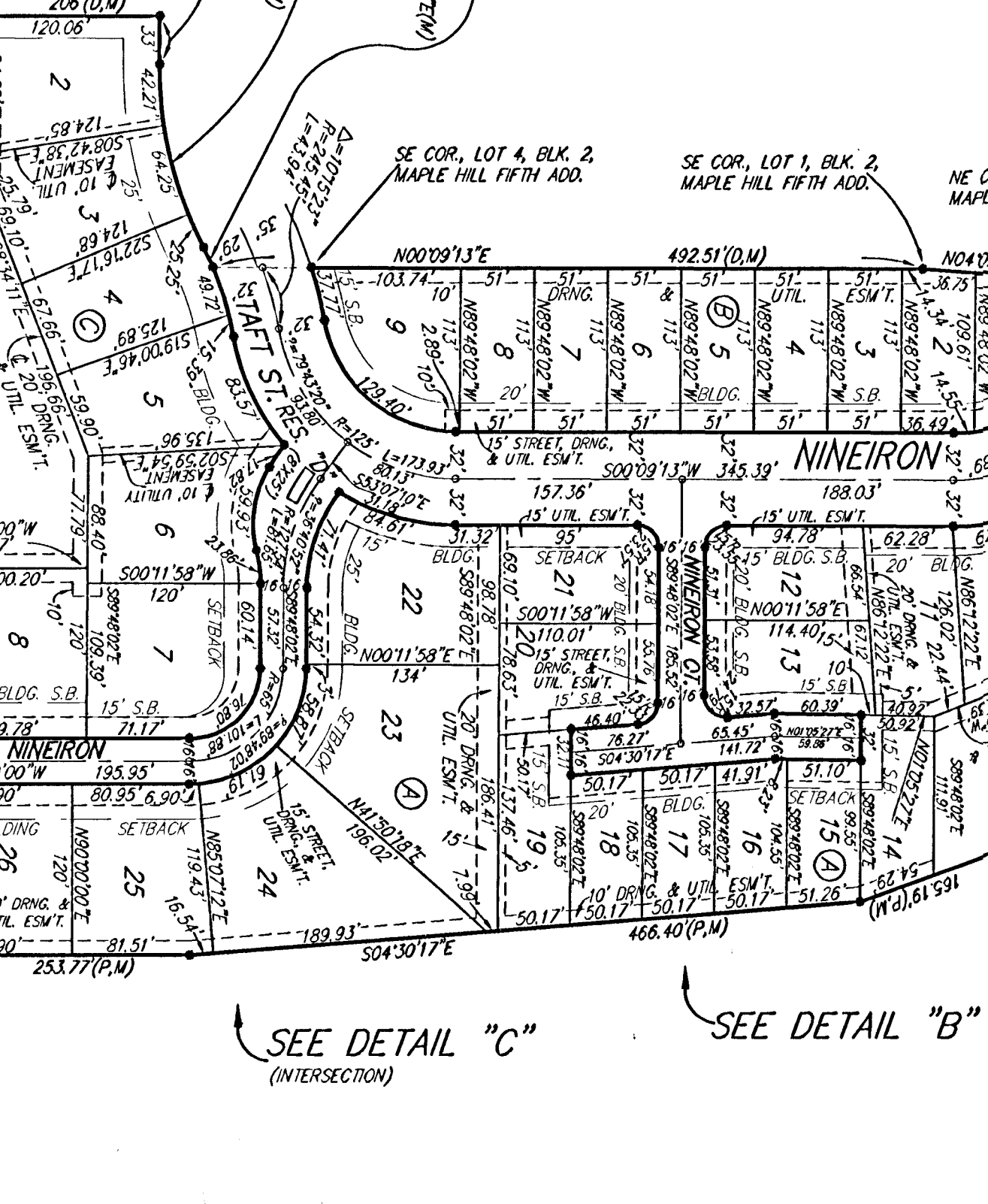
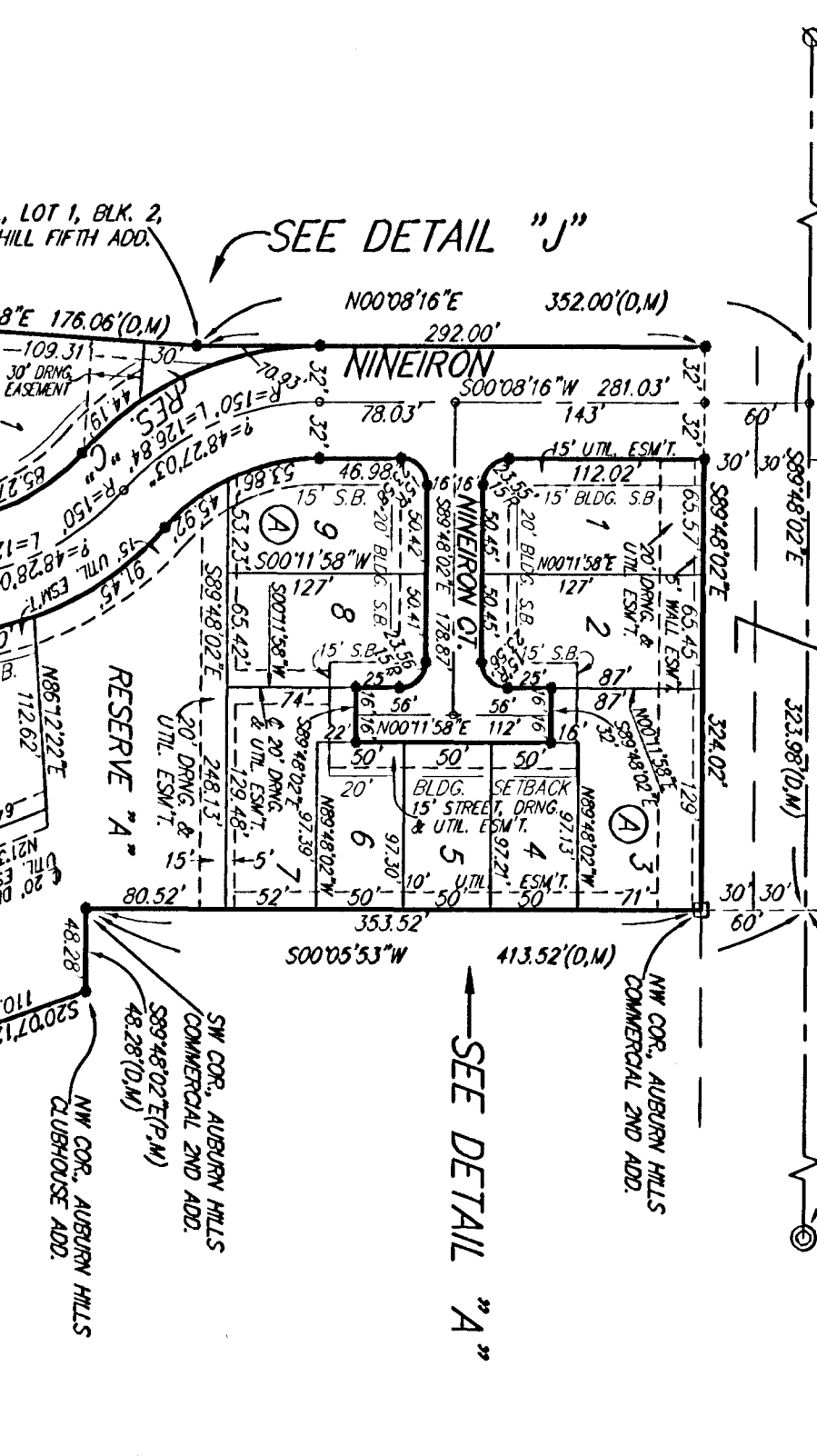
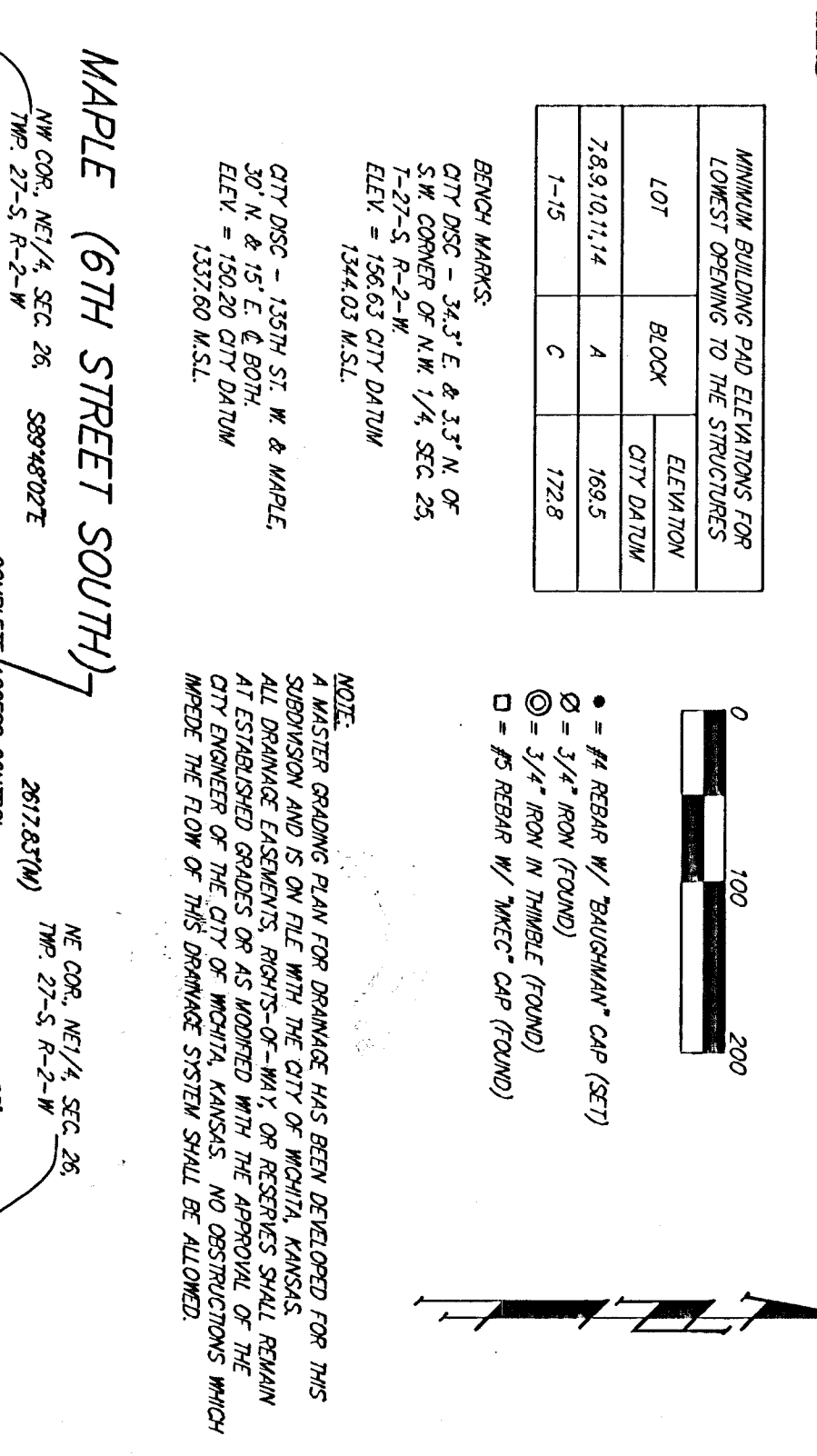
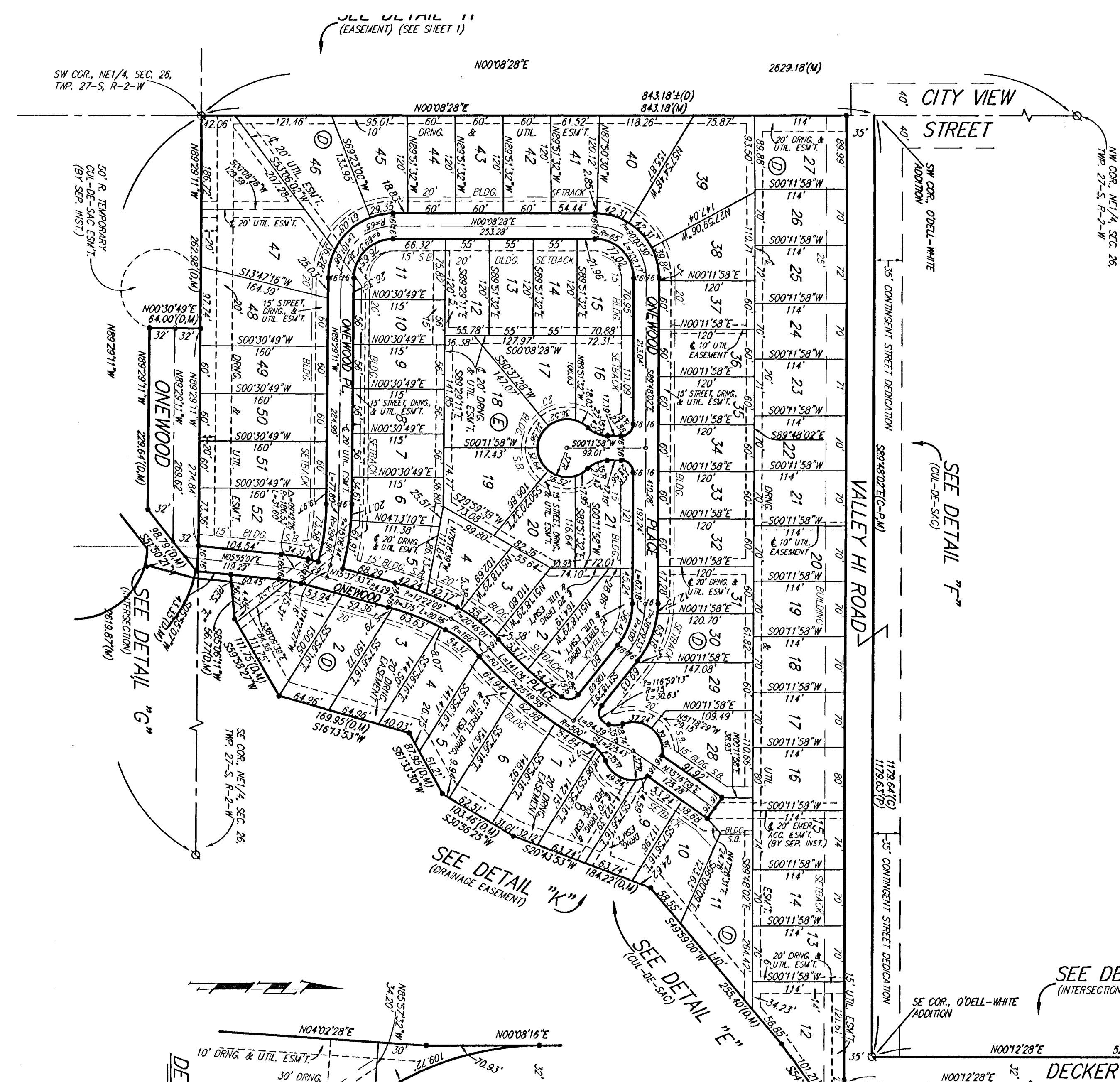
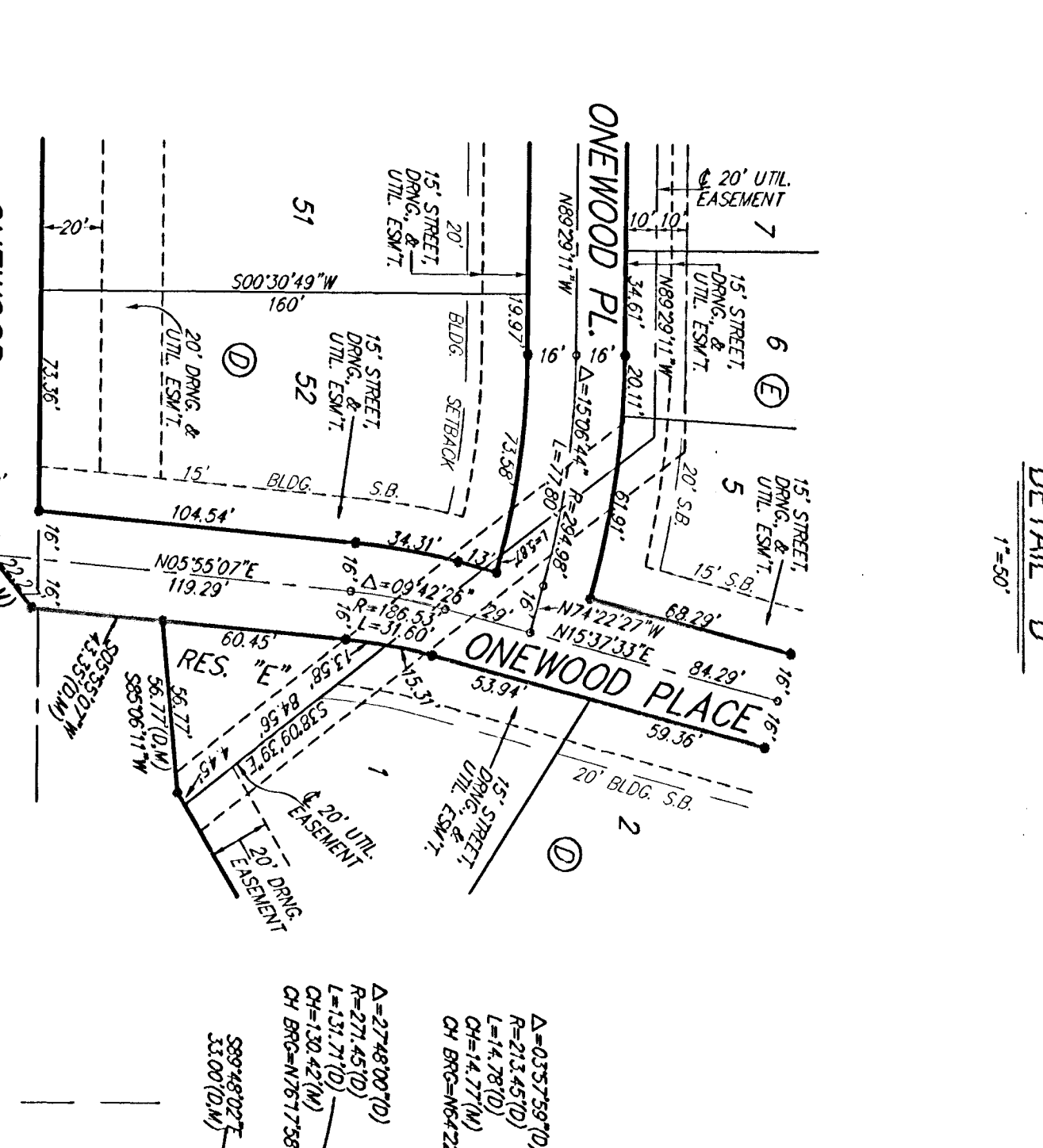
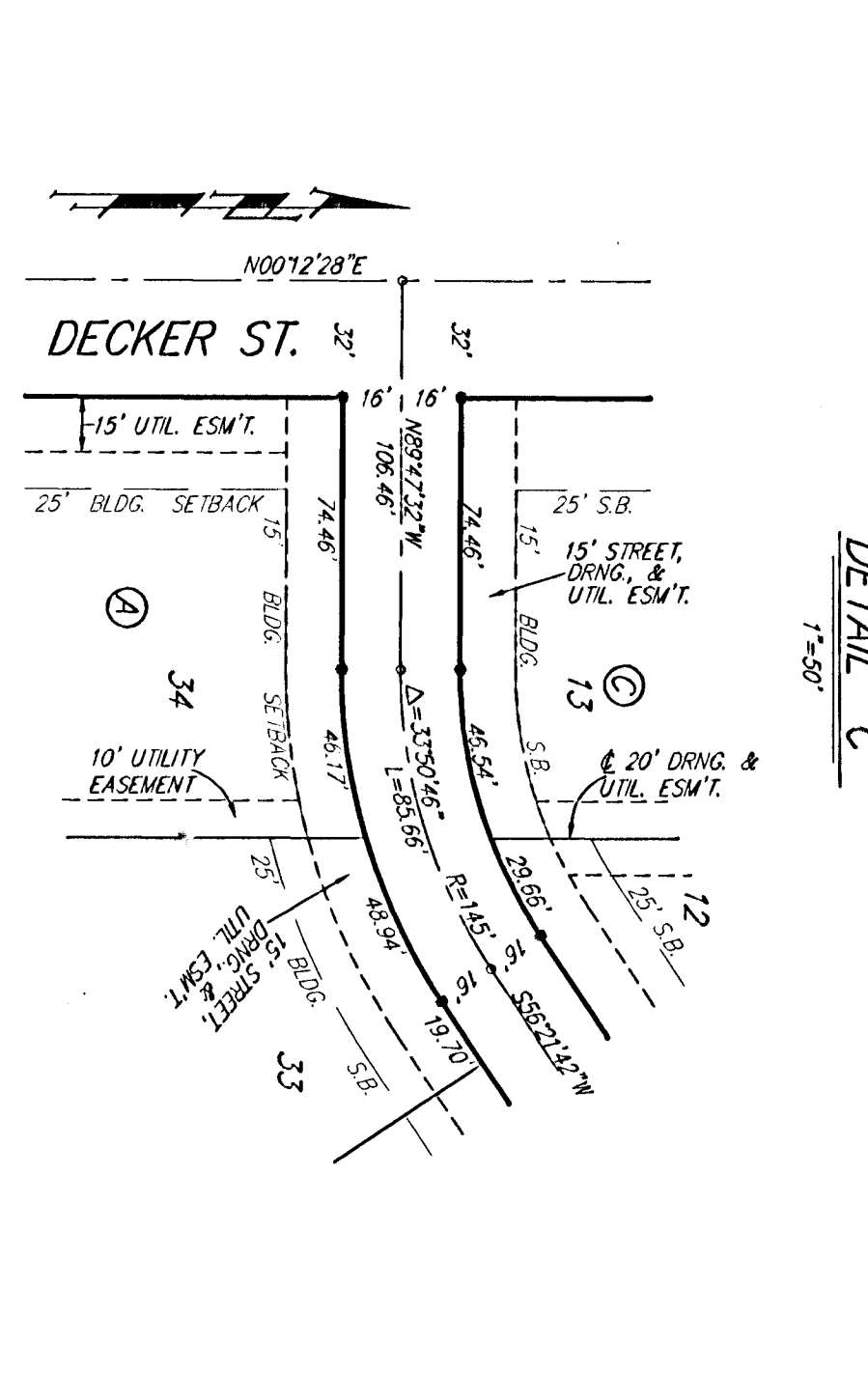
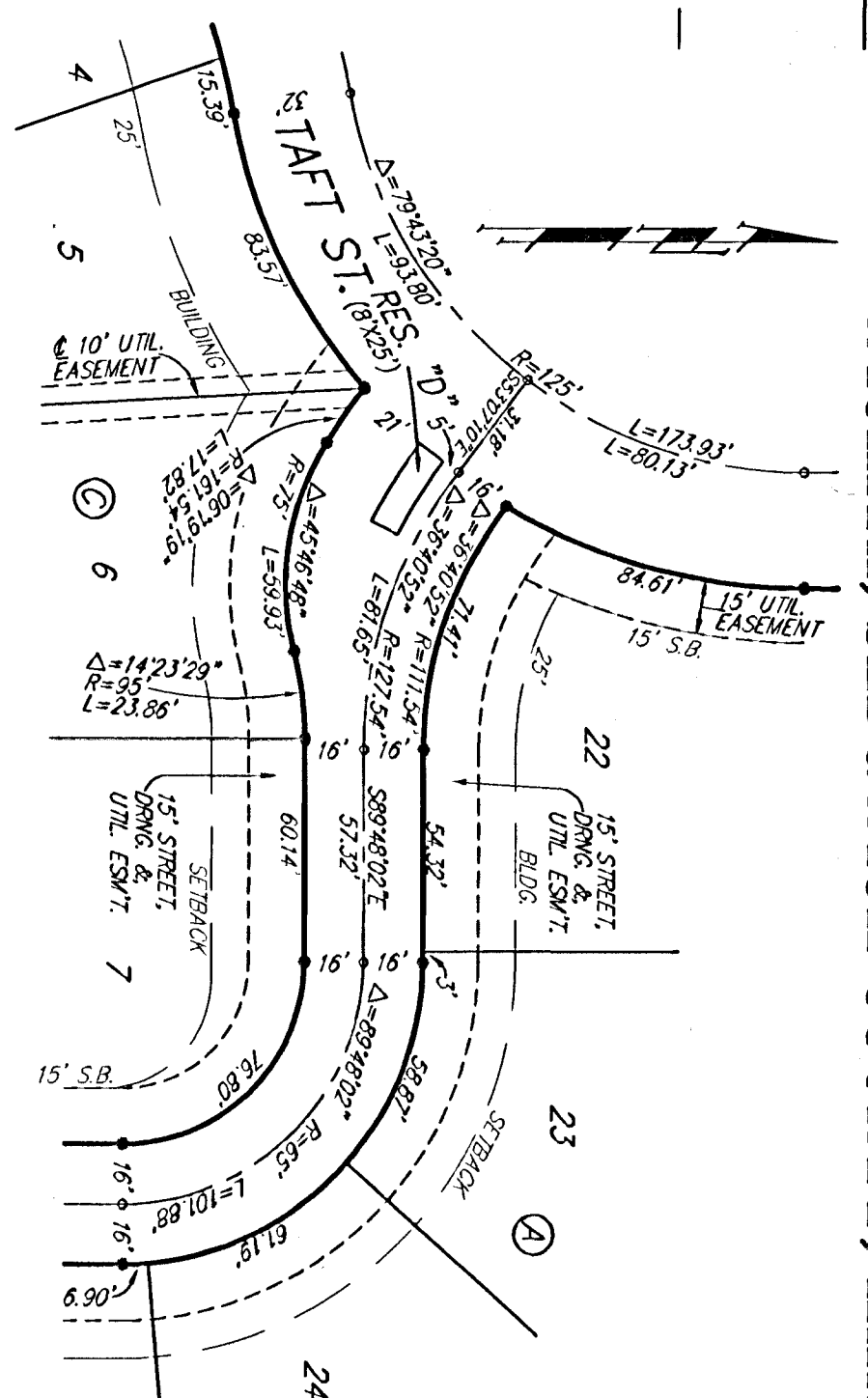
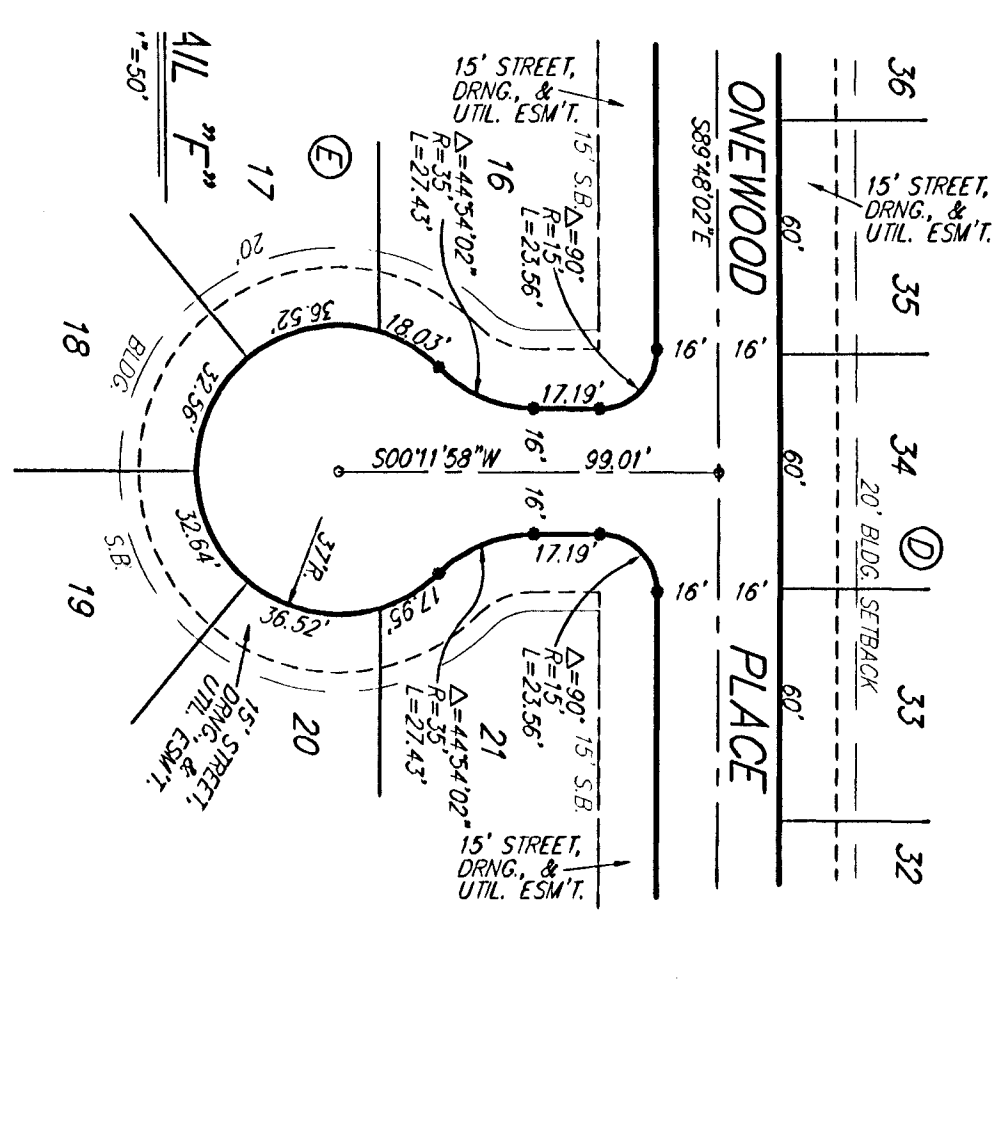
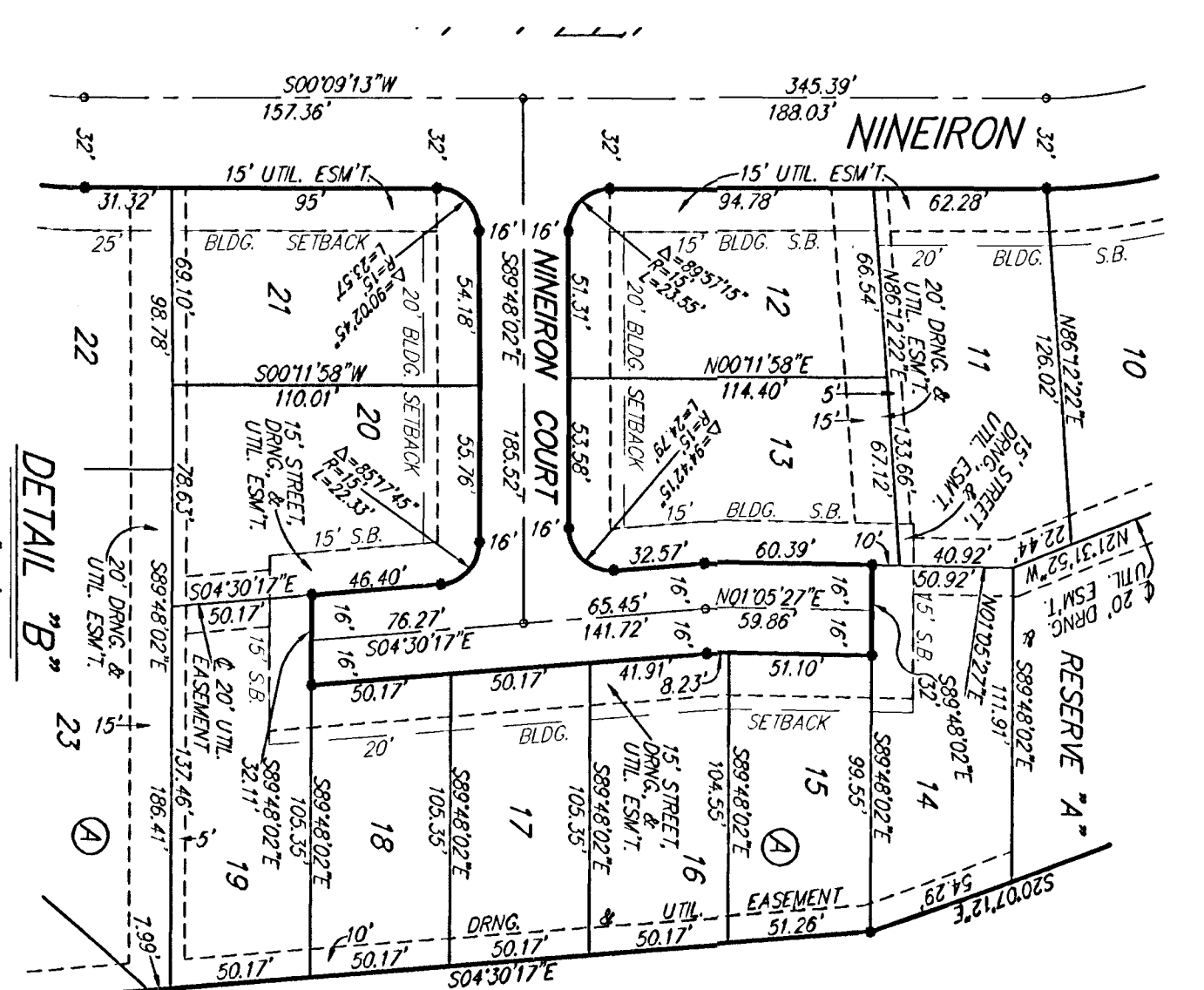
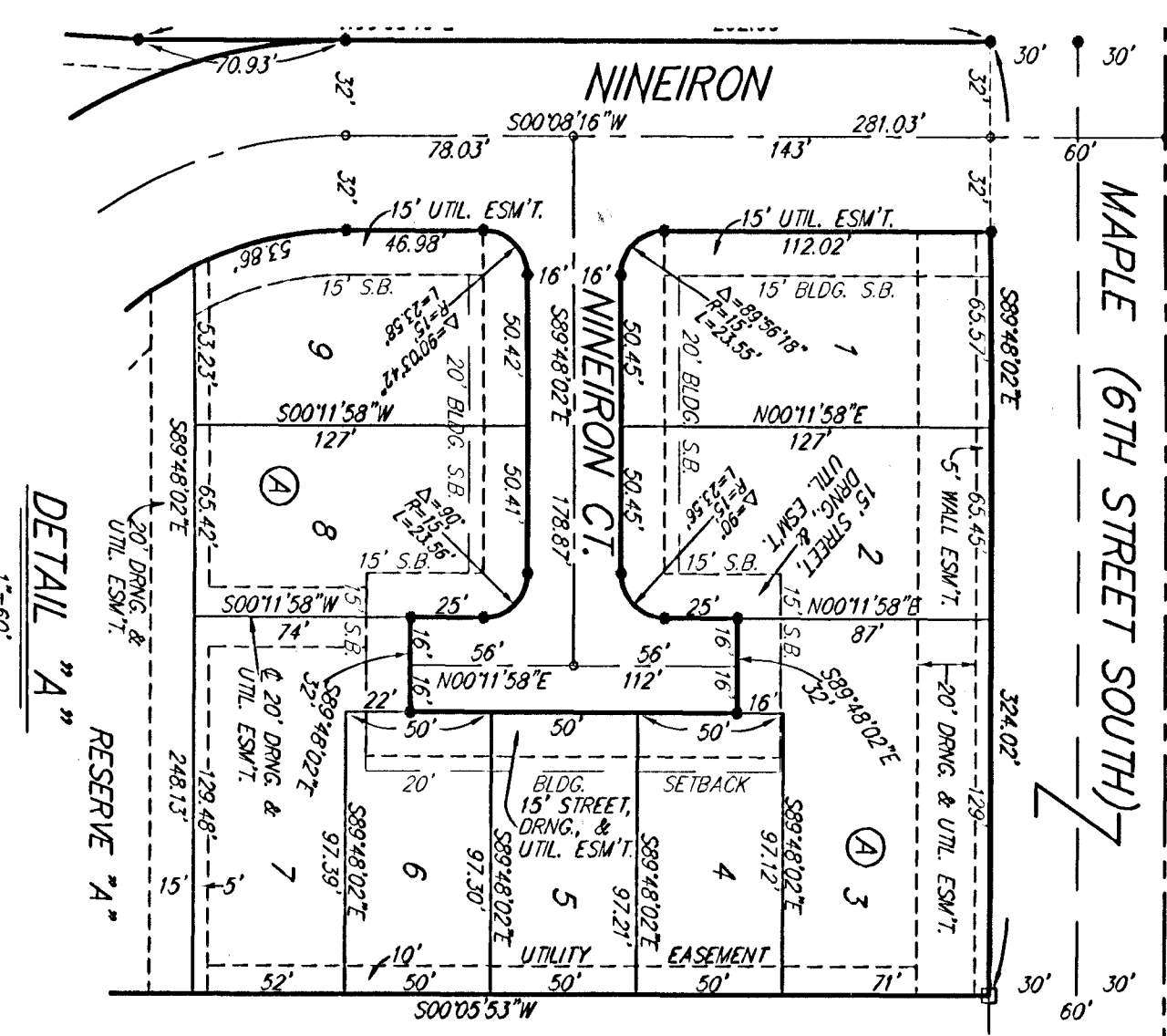


# AUBURN HILLS 12TH ADDITION

WICHITA, SEDGWICK COUNTY, KANSAS



MINIMUM BUILDING PAD ELEVATIONS FOR LOWEST GROUND TO THE STRUCTURES:	LOT	BLOCK	ELEVATION
	2&3, 10, 11, 14	A	168.5
	1-15	C	172.8

BENCH MARKS:  
 QTY DGC - 15TH ST. W. & MAPLE  
 71' N. & 15' E. & 6' 0" W.  
 1-27-S-R-2-W  
 ELEV. = 157.00 M.S.L.  
 154.03 M.S.L.

NOTE:  
 ALL DIMENSIONS SHOWN ARE AS SHOWN ON THIS PLAN. ALL DIMENSIONS SHALL BE TO THE CENTERLINE OF THE LOT OR ROAD, UNLESS OTHERWISE NOTED. THE CITY ENGINEER OF THE CITY OF WICHITA, KANSAS, HAS REVIEWED THIS PLAN AND HAS APPROVED THE DIMENSIONS SHOWN HEREON. THE CITY ENGINEER'S REVIEW IS LIMITED TO THE DIMENSIONS SHOWN ON THIS PLAN AND DOES NOT CONSTITUTE A GUARANTEE OF THE ACCURACY OF THE DIMENSIONS SHOWN ON THIS PLAN. THE CITY ENGINEER'S REVIEW IS LIMITED TO THE DIMENSIONS SHOWN ON THIS PLAN AND DOES NOT CONSTITUTE A GUARANTEE OF THE ACCURACY OF THE DIMENSIONS SHOWN ON THIS PLAN.



- 1/4" REBAR W/ BAUGHMAN CAP (SET)
- 1/4" IRON (FOUND)
- 1/4" IRON IN THINBLE (FOUND)
- 1/4" REBAR W/ WELDED CAP (FOUND)