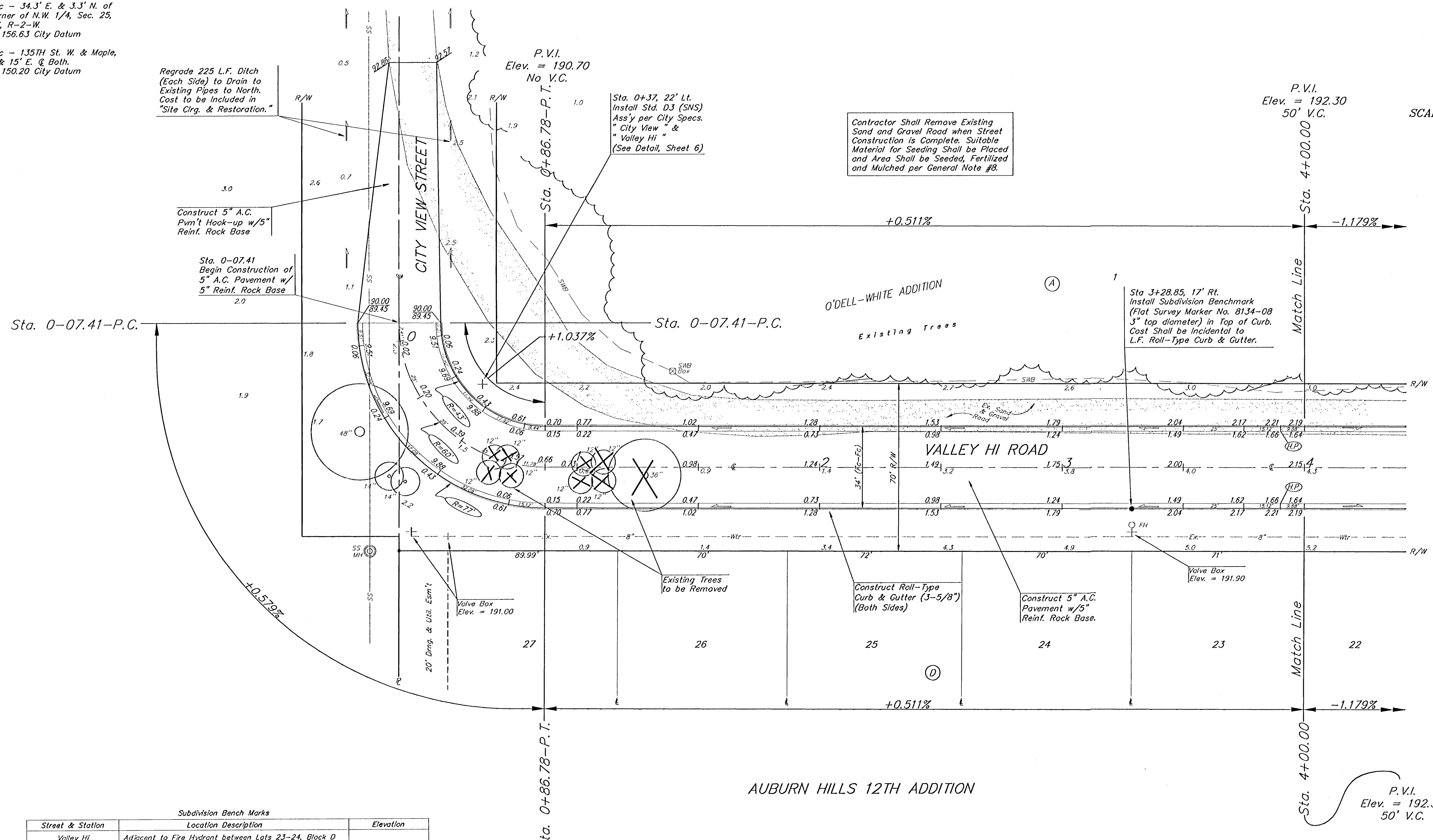


BENCH MARKS:
 City Disc - 34.3' E. & 3.3' N. of
 S.W. Corner of N.W. 1/4, Sec. 25,
 T-27-S, R-2-W.
 Elev. = 156.63 City Datum

City Disc - 135TH St. W. & Maple,
 30' N. & 15' E. @ Both.
 Elev. = 150.20 City Datum

SCALE: 1" = 20'
 • = Iron



Subdivision Bench Marks

Street & Station	Location Description	Elevation
Valley Hi 3+28.85, 17' Rt.	Adjacent to Fire Hydrant between Lots 23-24, Block D at 910' W of CL of Decker.	
Valley Hi 9+73.85, 17' Rt.	Adjacent to Fire Hydrant between Lots 14-15, Block D at 265' W of CL of Decker.	

Curve #1
 Curve Data Based on Centerline
 Rad. = 47' Delta = 89° 57' 15" Tangent = 46.96'
 Arc = 73.79' L.C. = 66.44' Def/Ft. = 36.57169 Min.

Station	Arc	FACE CHORD LENGTHS		Defl.	T. Defl.
		8' Lt.	8' Rt.		
0+00.00	-	-	-	0°00'00"	0°00'00"
0+25.00	25.00'	11.56'	37.85'	15°14'18"	15°14'18"
0+50.00	25.00'	11.56'	37.85'	15°14'17"	30°28'35"
0+73.79	23.79'	11.02'	36.06'	14°30'03"	44°58'38"

Remove Existing Trees Only as Necessary For Construction. Cost to be Included in Bid Item "Site Clearing & Restoration"

AUBURN HILLS 12TH & O'DELL-WHITE ADD.
VALLEY HI ROAD
 STA. 0+00 TO STA. 4+00.00

BAUGHMAN COMPANY P.A.
 ENGINEERING, SURVEYING, & PLANNING
 316-262-7271 • 315 ELLIS • WICHITA, KANSAS 67211

PROJECT NUMBER: 472-83272
 SHEET: 5 OF 10
 DESIGN: CMV DRAWN: JAK APPROVED: DATE: 3-14-01 SCALE: NOTED