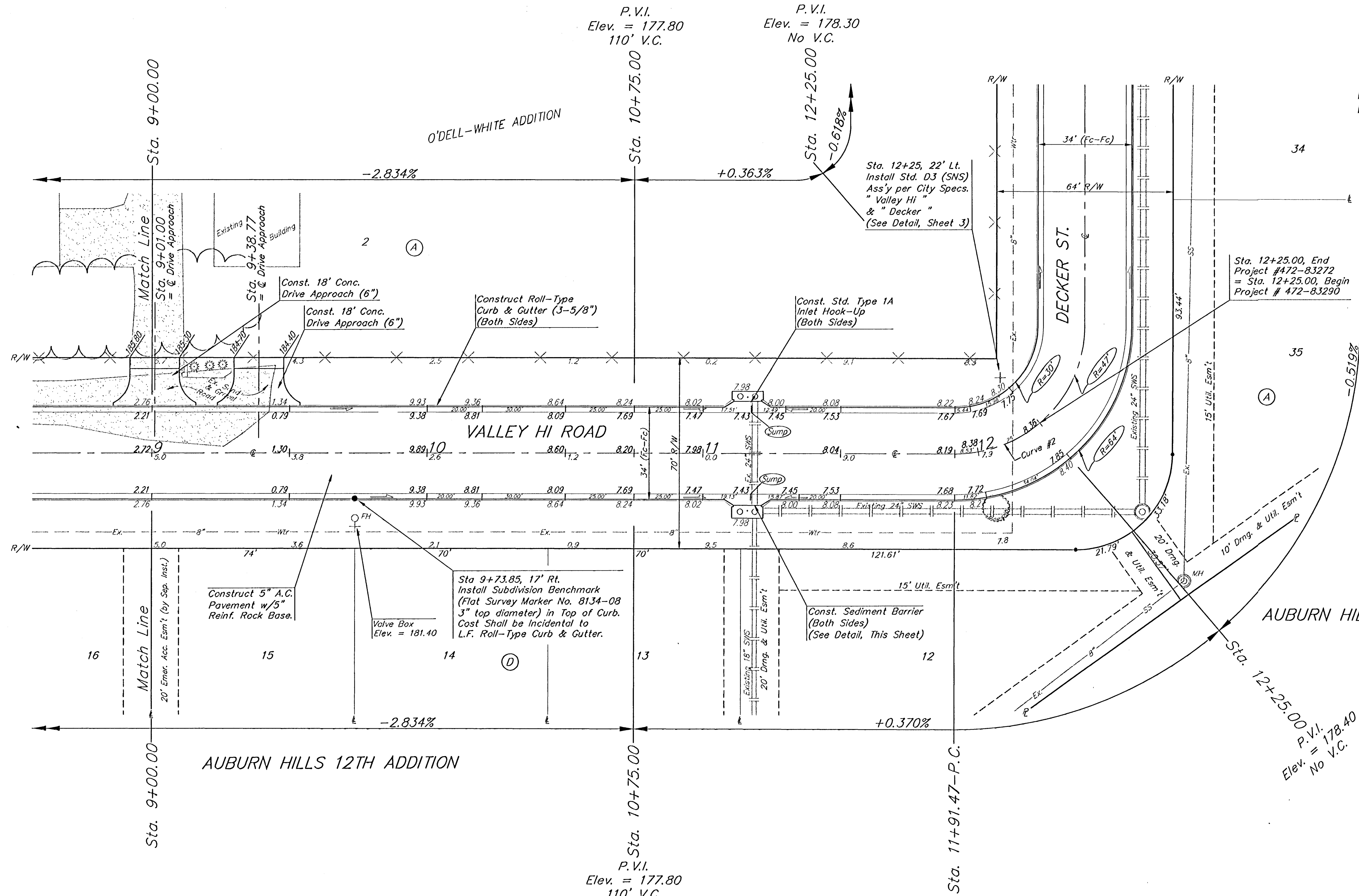


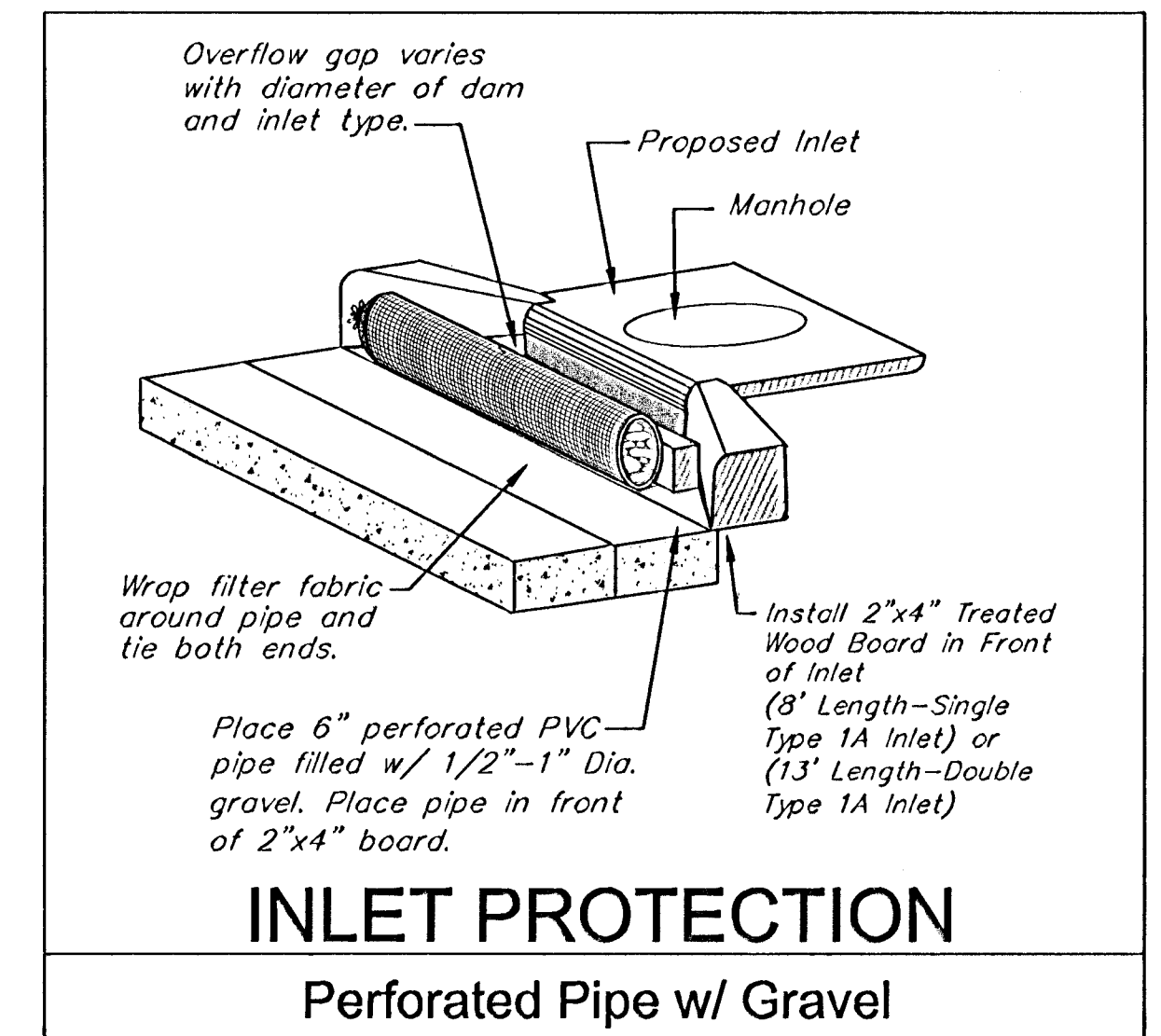
BENCH MARKS:
 City Disc - 34.3' E. & 3.3' N. of
 S.W. Corner of N.W. 1/4, Sec. 25,
 T-27-S, R-2-W
 Elev. = 156.63 City Datum

City Disc - 135TH St. W. & Maple,
 30' N. & 15' E. & Both.
 Elev. = 150.20 City Datum

SCALE: 1" = 20'
 • = Iron



AUBURN HILLS 12TH ADDITION



Curve #2
 Curve Data Based on Centerline
 Rad. = 47' Delta = 89° 59' 30" Tangent = 46.99'
 Arc = 73.82' L.C. = 66.46' Def/Fl. = 36.57207 Min.

Station	Arc	FACE CHORD LENGTHS		Defl.	T. Defl.
		8' Lt.	8' Rt.		
11+91.47	-	-	-	0'00"00"	0'00"00"
12+00.00	8.53'	3.99'	13.05'	5'11"58"	5'11"58"
12+25.00	25.00'	11.56'	37.85'	15'4"19"	20'26"17"
12+50.00	25.00'	11.56'	37.85'	15'4"17"	35'40"34"
12+65.29	15.29'	7.13'	23.32'	9'19"11"	44'59"45"

AUBURN HILLS 12TH & O'DELL-WHITE ADD.
VALLEY HI ROAD
 STA. 9+00.00 TO STA. 12+25.00

BAUGHMAN COMPANY P.A.
 ENGINEERING, SURVEYING, & PLANNING
 316-282-7271 • 315 ELLIS • WICHITA, KANSAS 67211

PROJECT NUMBER: **472-83272**

DESIGN: DMV DRAWN: JAK APPROVED: DATE: 3-14-01 SCALE: NOTED SHEET: 7 OF 10

Auburn Hills Str. 00-10-E837