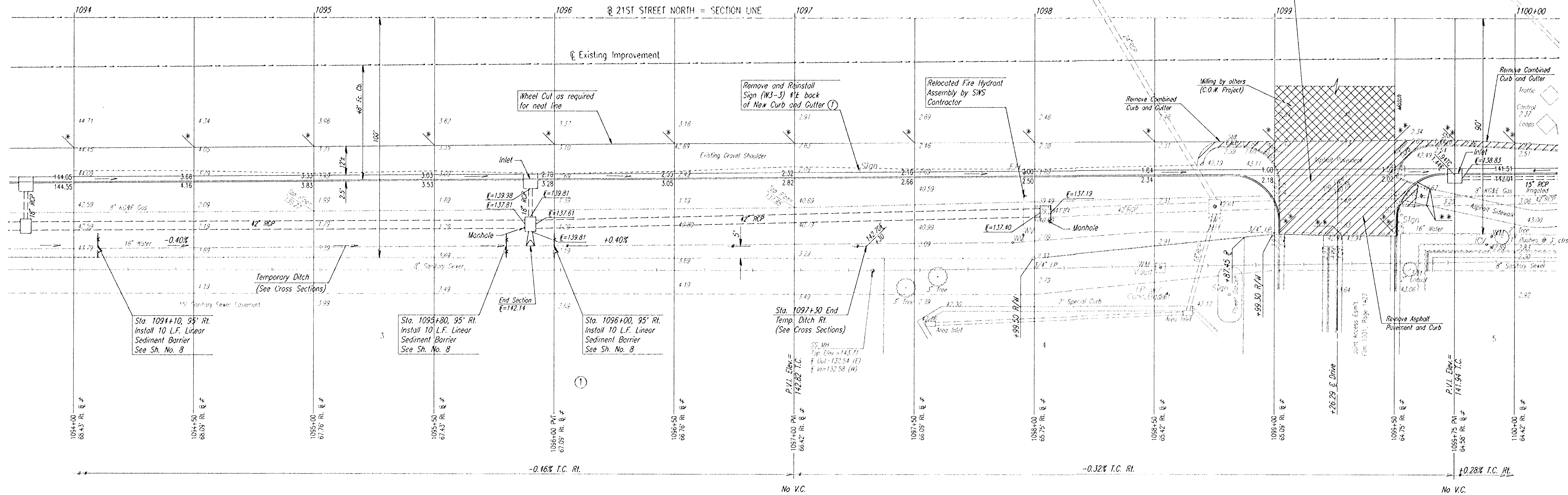


SCALE: 1"=20'



① Sign Removal and Reinstallation to be subsidiary to Combined Curb and Gutter

NOTE: CONTRACTOR SHALL PHASE HIS WORK TO MAINTAIN ACCESS AT ALL TIMES THRU DRIVE AT STA. 1099+26.29

STORM WATER SEWER PIPES AND STRUCTURES ARE TO BE CONSTRUCTED BY OTHERS UNDER C.O.M. PROJ. NO. 468-76-245-81911-000-000-001.

- * MATCH EXISTING EDGE OF PAVEMENT PLUS 1/2"
- ** MATCH EXISTING
- ≠ FACE OF CURB
- ◆ CONST. STD. WHEELCHAIR RAMP. SAW CUT EXISTING ASPHALT SIDEWALK AT MATCH POINT. SAW CUT TO BE SUBSIDIARY TO WHEELCHAIR RAMP.

BARRINGTON CORNER DECEL LANE

21ST STREET NORTH

STA. 1094+00 TO STA. 1100+00

PROFESSIONAL ENGINEERING CONSULTANTS, P.A.
ENGINEERS
MICHIGAN, KANSAS

| | | | |
|-------------|----------|------------|-----------|
| Designed by | BER, GDD | Checked by | |
| Drawn by | DEP | Date | AUG. 1995 |
| | | Job No. | 95325 |

usr:/usr/ldg/1995/95325/plan3.dgn
 date plotted: 8/18/95
 dwg/writer: dwg/writer dunn